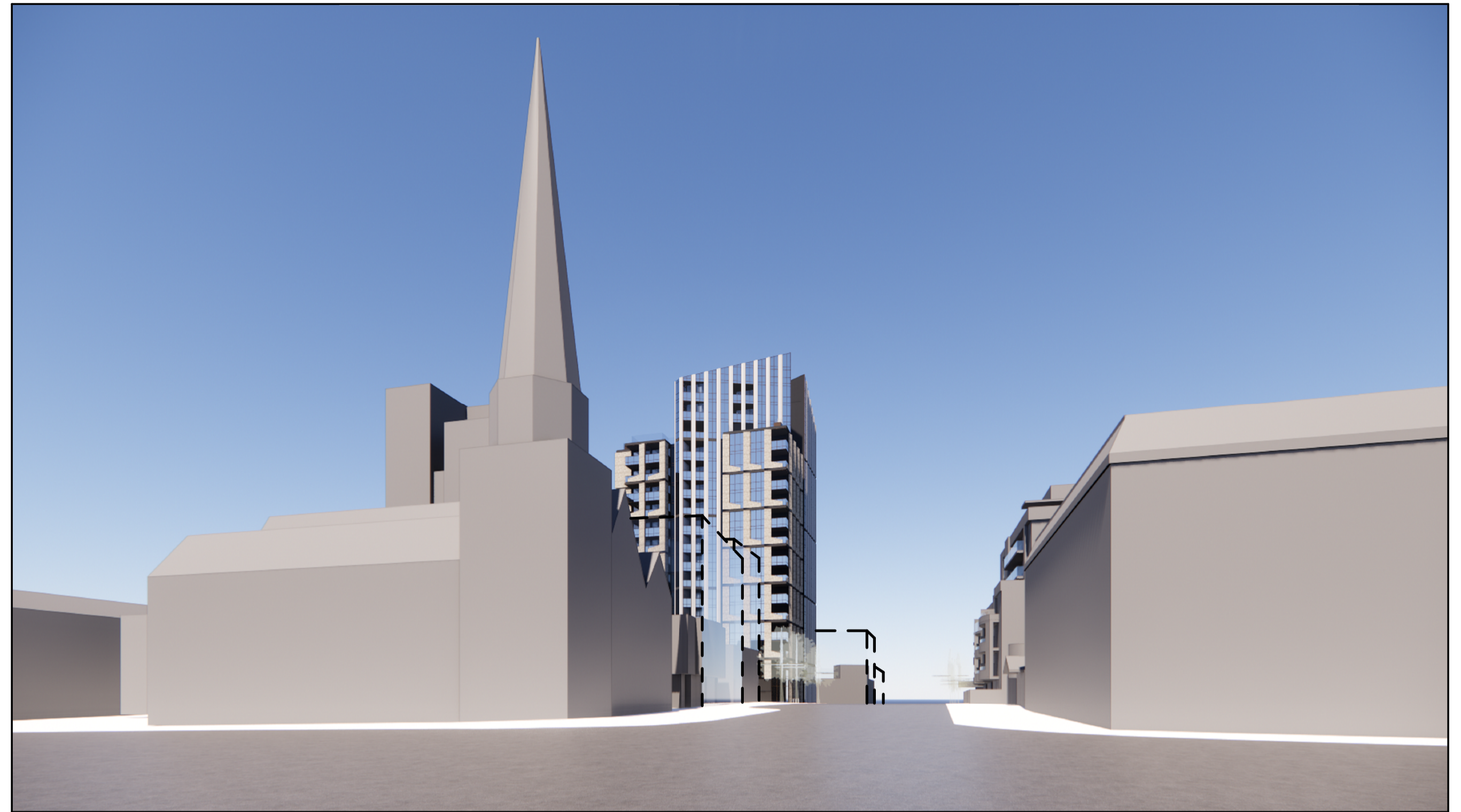


C (i)



2 ST. KILDA ROAD - LOOKING NORTH

C (i)



3 VIEW FROM 35 BURNETT STREET (CORNER OF BARKLY & PRINCESS STREET)

REVISION DESCRIPTION	
(i)	3D views updated following design changes

REVISIONS		
B	01.09.21	Voluntary amendments + Additional information following Councils' comments
	21.03.22	Voluntary amendments following Councils' comments (dated 20.10.21)
C	01.08.22	ISSUE FOR TOWN PLANNING

NOT FOR CONSTRUCTION

MIXED-USE DEVELOPMENT
 TOWN PLANNING

CBG ARCHITECTS & INTERIOR
 33 Tope Street, South Melbourne VIC 3205
 P: +61 3 9525 3855

This drawing is subject to copyright to CBG Architects Pty. Ltd.

WHITE MODELS NOTE

All perspectives horizontal visual arc is set to 90 degrees. Eye elevation and target elevation are 1.7 metres high above vantage point ground level. Refer to TP900 for vantage point locations.

COLOUR LEGEND

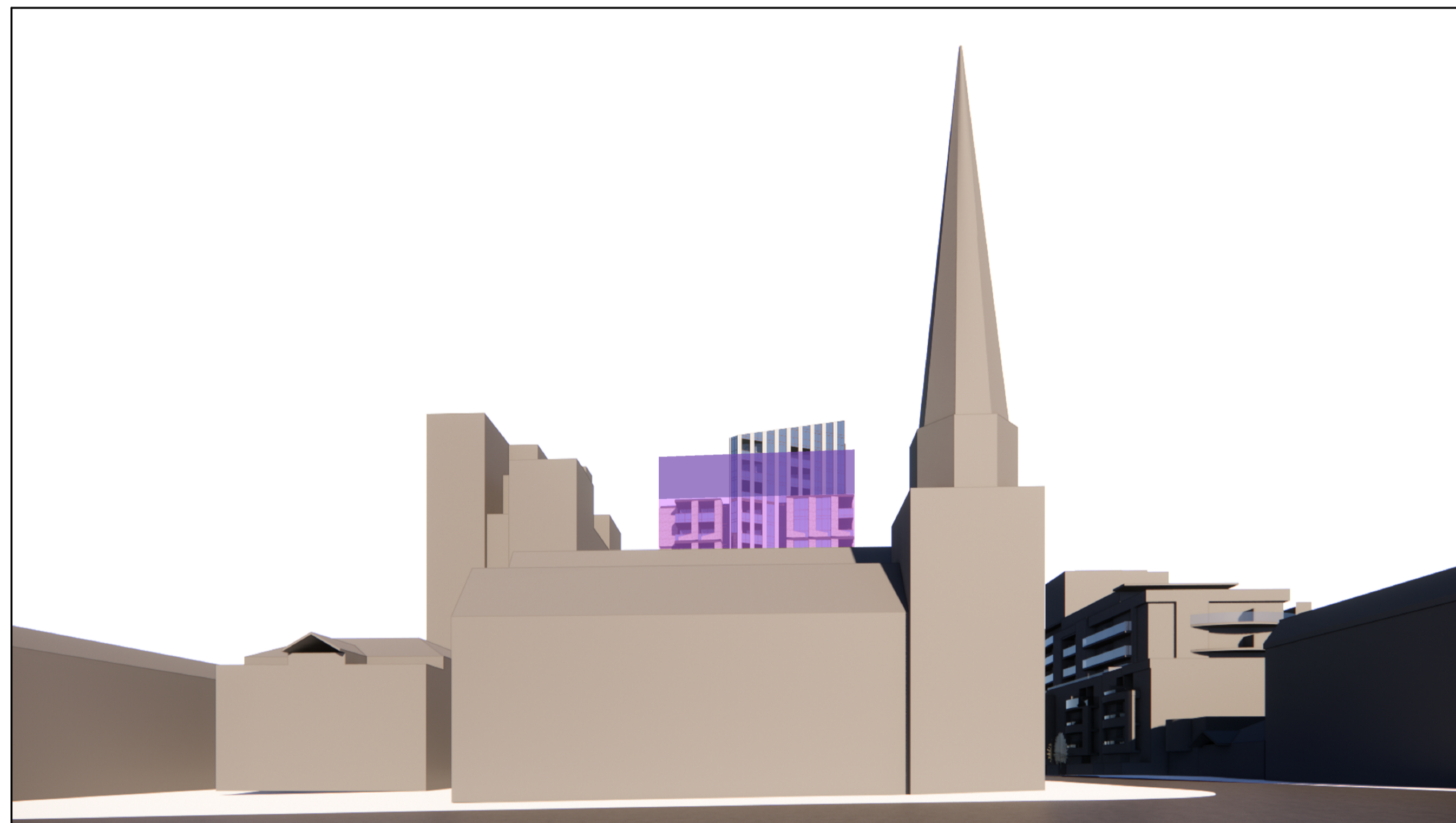
- 46 metre building (13 storeys), in accordance with DD036
- 53 metre building (15 storeys), in accordance with DD036

DRAWING SCALE NA

14 ALMA ROAD ST KILDA, VIC	1910
TOWN PLANNING	TP901 - C
INDICATIVE WHITE MODELS	



C 0



4 VIEW FROM 36 PRINCES STREET (NORTH CORNER OF BARKLY & PRINCESS STREET)

REVISION DESCRIPTION	
(i)	3D views updated following design changes

REVISIONS		
B	01.09.21	Voluntary amendments + Additional information following Councils' comments
	21.03.22	Voluntary amendments following Councils' comments (dated 20.10.21)
C	01.08.22	ISSUE FOR TOWN PLANNING

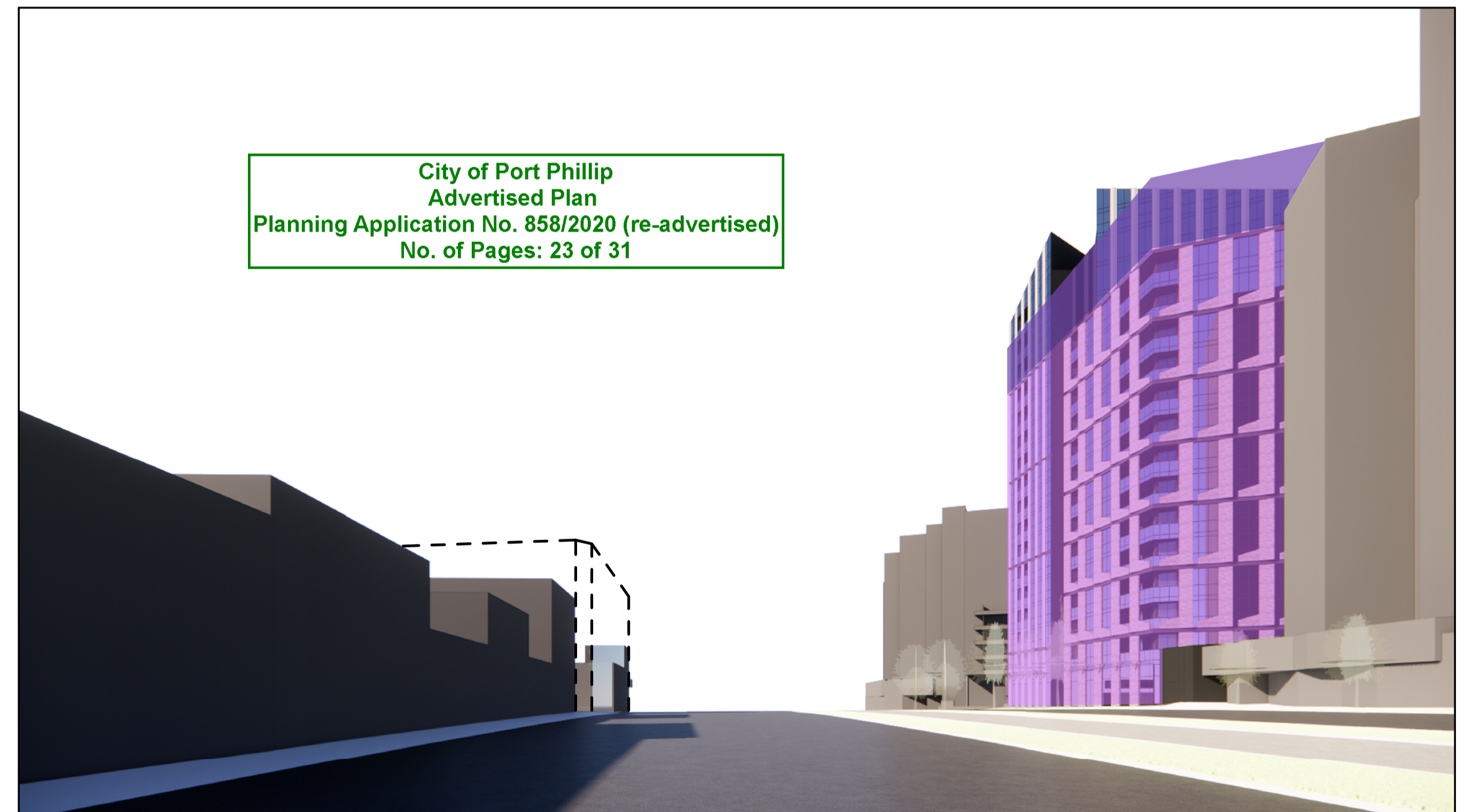
NOT FOR CONSTRUCTION

**MIXED-USE DEVELOPMENT
TOWN PLANNING**

CBG ARCHITECTS & INTERIOR
33 Tope Street, South Melbourne VIC 3205
P: +61 3 9525 3855

This drawing is subject to copyright to CBG Architects Pty. Ltd.

C 0



City of Port Phillip
Advertised Plan
Planning Application No. 858/2020 (re-advertised)
No. of Pages: 23 of 31

5 ST. KILDA ROAD - LOOKING SOUTH

WHITE MODELS NOTE

All perspectives horizontal visual arc is set to 90 degrees. Eye elevation and target elevation are 1.7 metres high above vantage point ground level. Refer to TP900 for vantage point locations.

COLOUR LEGEND

- 46 metre building (13 storeys), in accordance with DD036
- 53 metre building (15 storeys), in accordance with DD036

DRAWING SCALE NA

14 ALMA ROAD ST KILDA, VIC	1910
TP902 - C	
TOWN PLANNING	
INDICATIVE WHITE MODELS	

