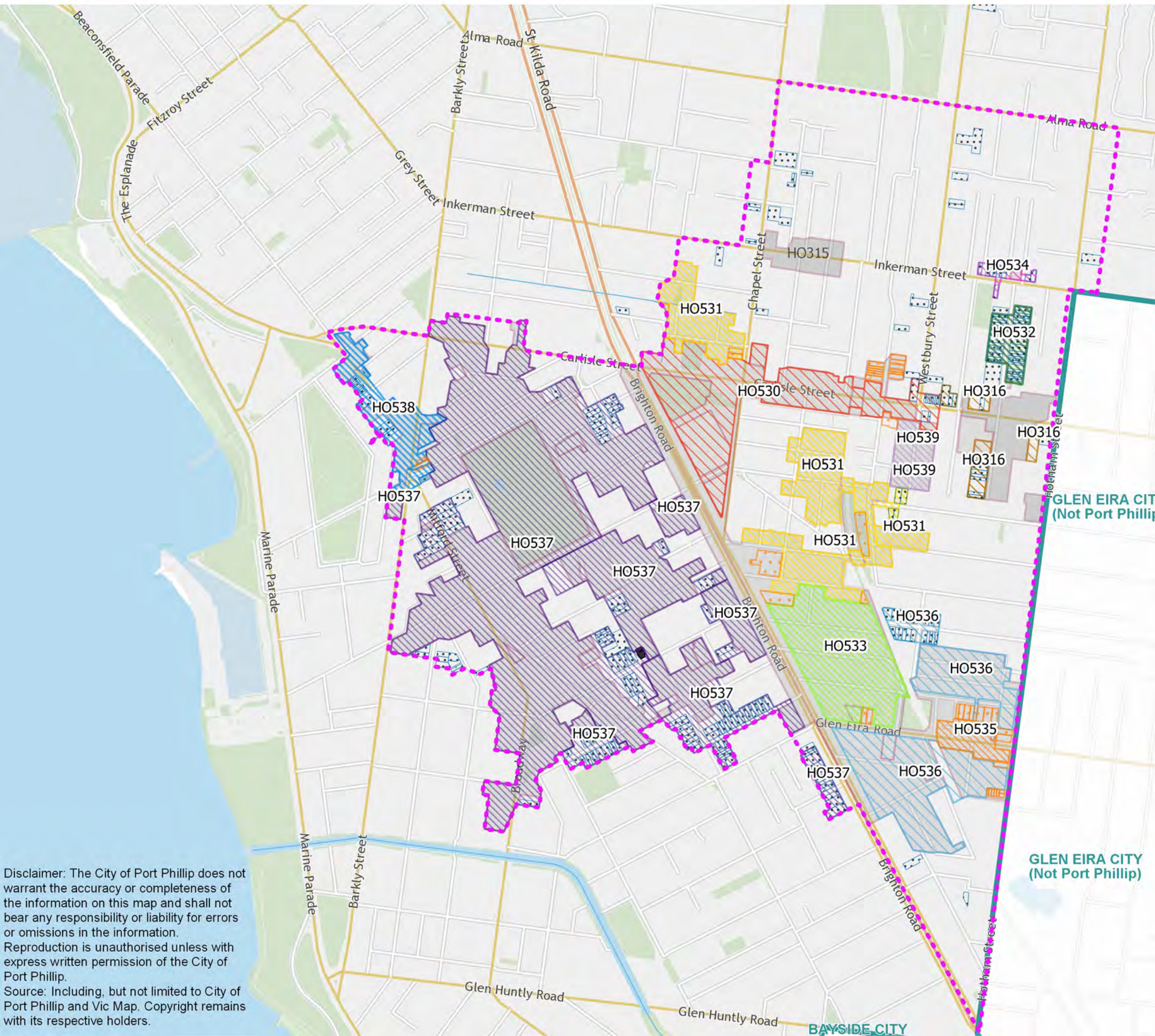




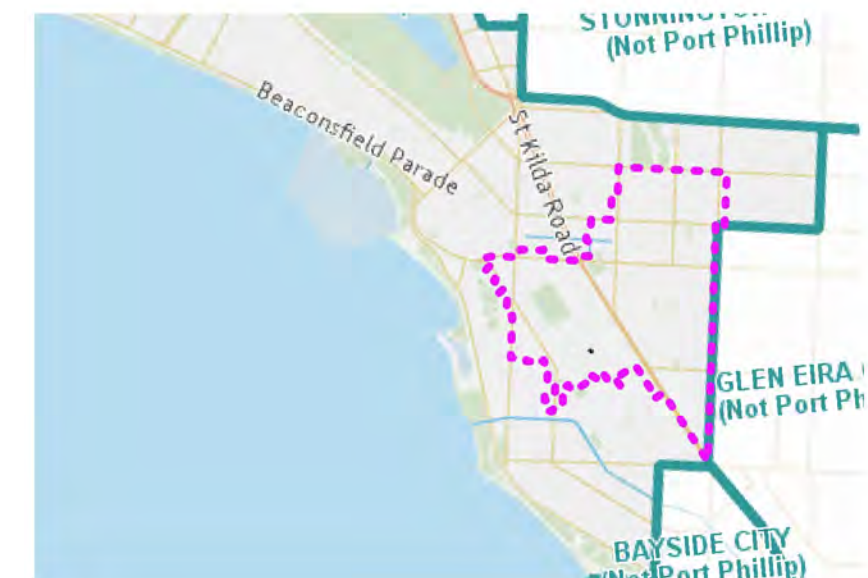
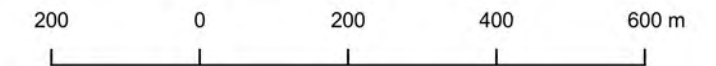


# Heritage Review of the HO7 Precinct and Surrounds: Proposed Heritage Precincts + Precinct Extensions



## Legend

- - - Study Area
  - Proposed Addition to HO
  - Place Removed from HO
  - Existing HO Areas
- Proposed Heritage Precincts**
- HO530: Carlisle Street Commercial and Public Precinct
  - HO531: Balaclava Flats Residential Precinct
  - HO532: Balston Street Precinct
  - HO533: Brunnings Estate and Environs Precinct
  - HO534: Inkerman Street Commercial Precinct
  - HO535: Ripponlea Commercial Precinct
  - HO536: Ripponlea Residential Precinct
  - HO537: St Kilda Botanical Gardens and Environs Precinct
  - HO538: Village Belle Commercial Precinct
  - HO539: Westbury Close Precinct
- Existing Precinct Extensions**
- HO316: St Kilda East Precinct Extension



Disclaimer: The City of Port Phillip does not warrant the accuracy or completeness of the information on this map and shall not bear any responsibility or liability for errors or omissions in the information. Reproduction is unauthorised unless with express written permission of the City of Port Phillip. Source: Including, but not limited to City of Port Phillip and Vic Map. Copyright remains with its respective holders.