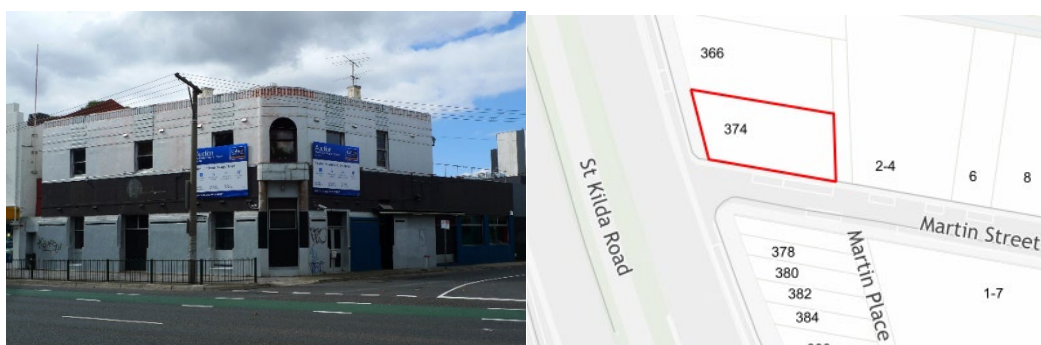


Statement of Significance: 374 St Kilda Road, St Kilda “Duke of Edinburgh Hotel (former)”

Address: 374 St Kilda Road, St Kilda	Name: Duke of Edinburgh Hotel (former)
Place type: Commercial: Hotel	Grading: Significant
PS ref no: HO554	Constructed: 1850s, 1924, 1937
Heritage precinct: Not applicable	Citation No.: 2446



What is significant?

The former Duke of Edinburgh Hotel at 374 St Kilda Road, St Kilda, is significant. It was constructed in the late 1850s as a single storey shop. In 1924 it was expanded to two storeys by architect H V Gillespie, and in 1937 the façade was redesigned in the Moderne style.

The hotel consists of a front two storey section and single-storey rear sections. The main roof has three parallel hipped sections of differing widths and lengths clad in corrugated sheet metal. The rear skillion/hipped roof section at least partly dates to the 1920s. There are four rendered chimneys with a projecting cap and raised 'T'-shaped detailing. The rendered façade features an indented band to the parapet and both raised and recessed speedlines, and the lower part is built out between the openings in a buttress-like manner. The chamfered corner has a curved profile, a light fixture, and the main entrance is defined by tiled engaged columns. The corner window to the upper floor, which probably relates from the 1924 phase, is arched and deeply recessed. Most of the upper floor windows are rectangular and have timber-framed double hung sashes with single panes. The openings to the ground floor have black tiling (overpainted) to the reveals.

Post-1937 alterations and additions, including the rear single storey gable roofed section, are not significant. The decorative glass window to Martin Street and the current paint colour scheme are not significant.

How is it significant?

The former Duke of Edinburgh Hotel, 374 St Kilda Road, St Kilda, is of local historical and aesthetic significance to the City of Port Phillip.

Why is it significant?

The former Duke of Edinburgh Hotel is historically significant as one of the oldest surviving hotel buildings in St Kilda, primarily operating as the Duke of Edinburgh Hotel between 1868 and 1996 and for some years thereafter for related uses under a different name. Originally constructed as a single storey grocer's shop in the late 1850s, the building was expanded and remodeled in a contemporary style during the Interwar period indicative of the common approach to the modernisation of hotels

whereby buildings were evolved over multiple stages of development and upgrading. Its St Kilda Road address is reflective of the traditional practice of prominently locating hotels along major thoroughfares. (Criteria A)

The former Duke of Edinburgh Hotel is of aesthetic significance as a good and intact example of an Interwar period hotel in the Moderne style, which was popularly adopted for hotels during the 1930s. It also incorporates some remnant aspects of the earlier 1920s remodeling which add interest and hint at the staged development of this building. While this style is not uncommon in the municipality among the group of remaining Interwar period hotels, the incorporation of curved elements at the corner and detailed articulation (to the parapet, extensive use of speedlines, and buttressing and reveals to the ground floor), distinguishes it from some of the more angular Functionalist examples. (Criterion E)

Primary source

RBA Architects & Conservation Consultants, *Review of Heritage Precinct HO7 – Elwood, St Kilda, Balaclava, Ripponlea - Stage 2 Report* (2022)