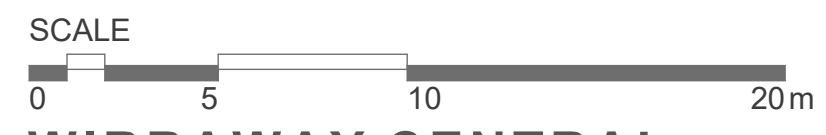
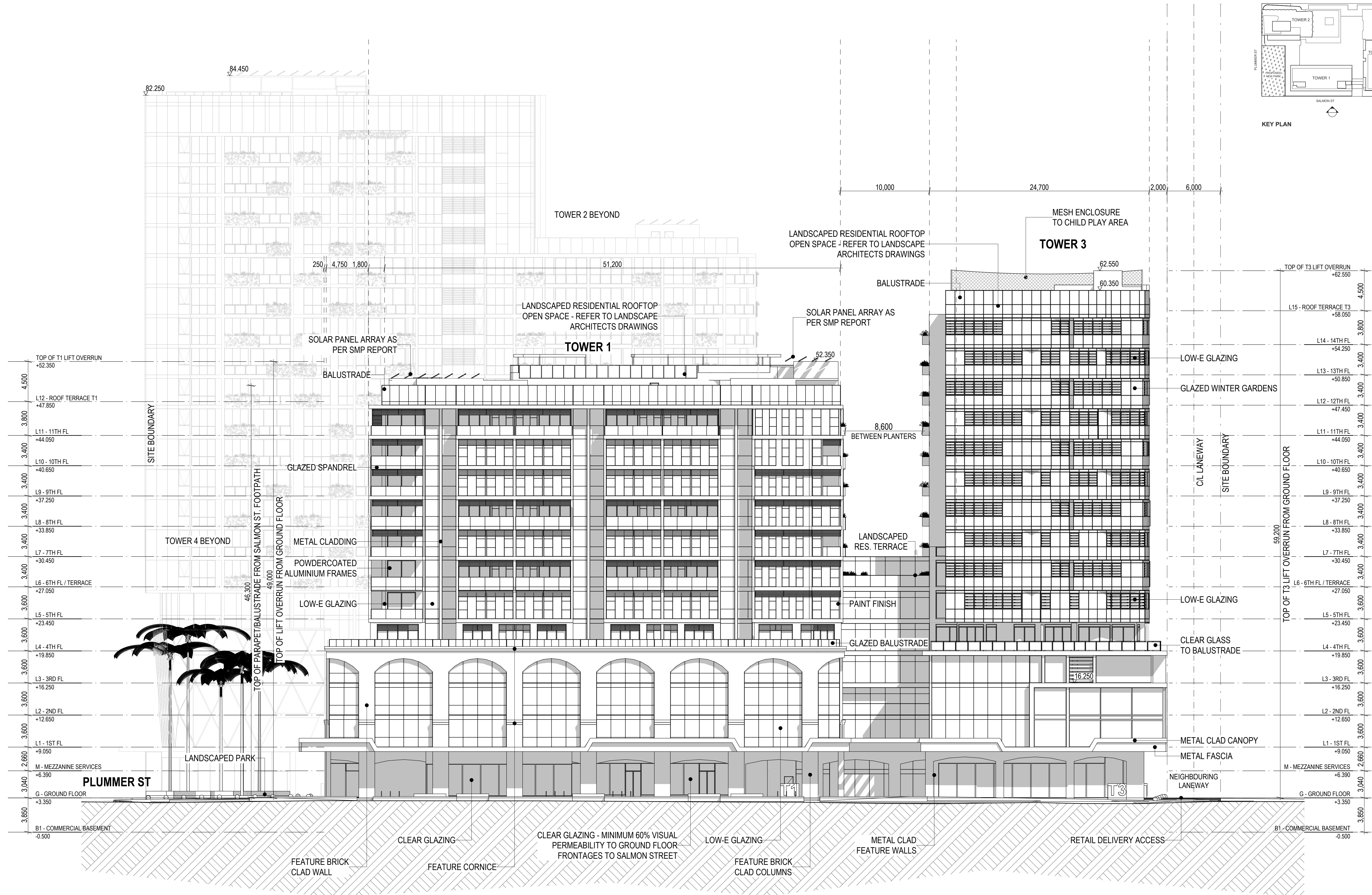


KEY PLAN



**WIRRAWAY CENTRAL**  
18 - 22 Salmon Street, Port Melbourne  
**ARMSBY ARCHITECTS**  
Design Architects and Energy Consultants

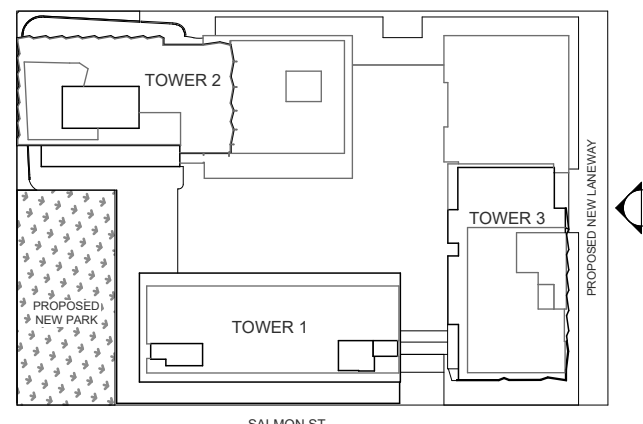
Rev	Description	By	Date
-	TOWN PLANNING ISSUE	ZS	18/12/2020

These drawings are copyright of Armsby Architects. They may not be used or reproduced without express approval of Armsby Architects. Do not scale drawings. Use written dimensions only. Any discrepancy in the drawings or specifications shall be referred to Armsby Architects.

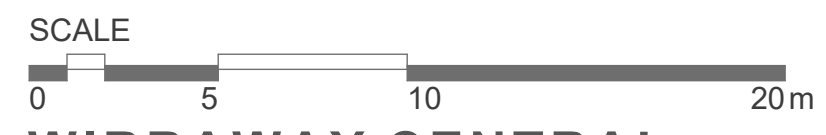
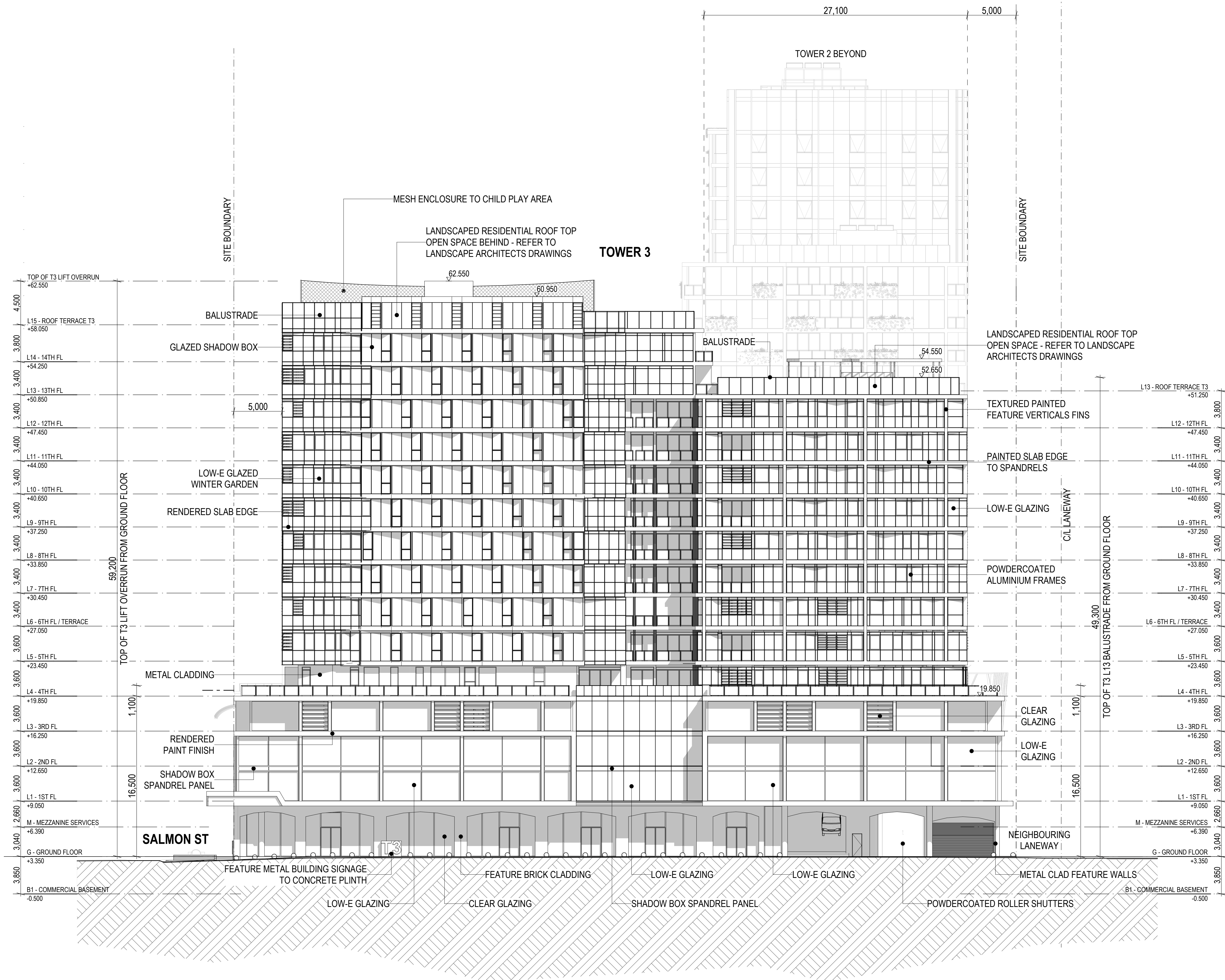
Drawing  
**E2 - WEST ELEVATION (SALMON ST ELEVATION)**  
Drawing Number  
**TP202**

Project Status  
**Town Planning**  
Scale 1:400 @ A3  
Revision





KEY PLAN



**WIRRAWAY CENTRAL**  
 18 - 22 Salmon Street, Port Melbourne  
**ARMSBY ARCHITECTS**  
 Design Architects and Energy Consultants

Rev	Description	By	Date
-	TOWN PLANNING ISSUE	ZS	18/12/2020

These drawings are copyright of Armsby Architects. They may not be used or reproduced without express approval of Armsby Architects. Do not scale drawings. Use written dimensions only. Any discrepancy in the drawings or specifications shall be referred to Armsby Architects.

Drawing  
**E3 - SOUTH ELEVATION (LANEWAY)**  
 Drawing Number  
**TP203**

Project Status  
**Town Planning**  
 Scale 1:400 @ A3  
 Revision





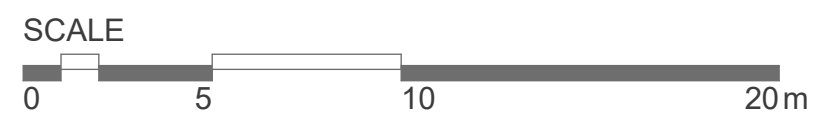
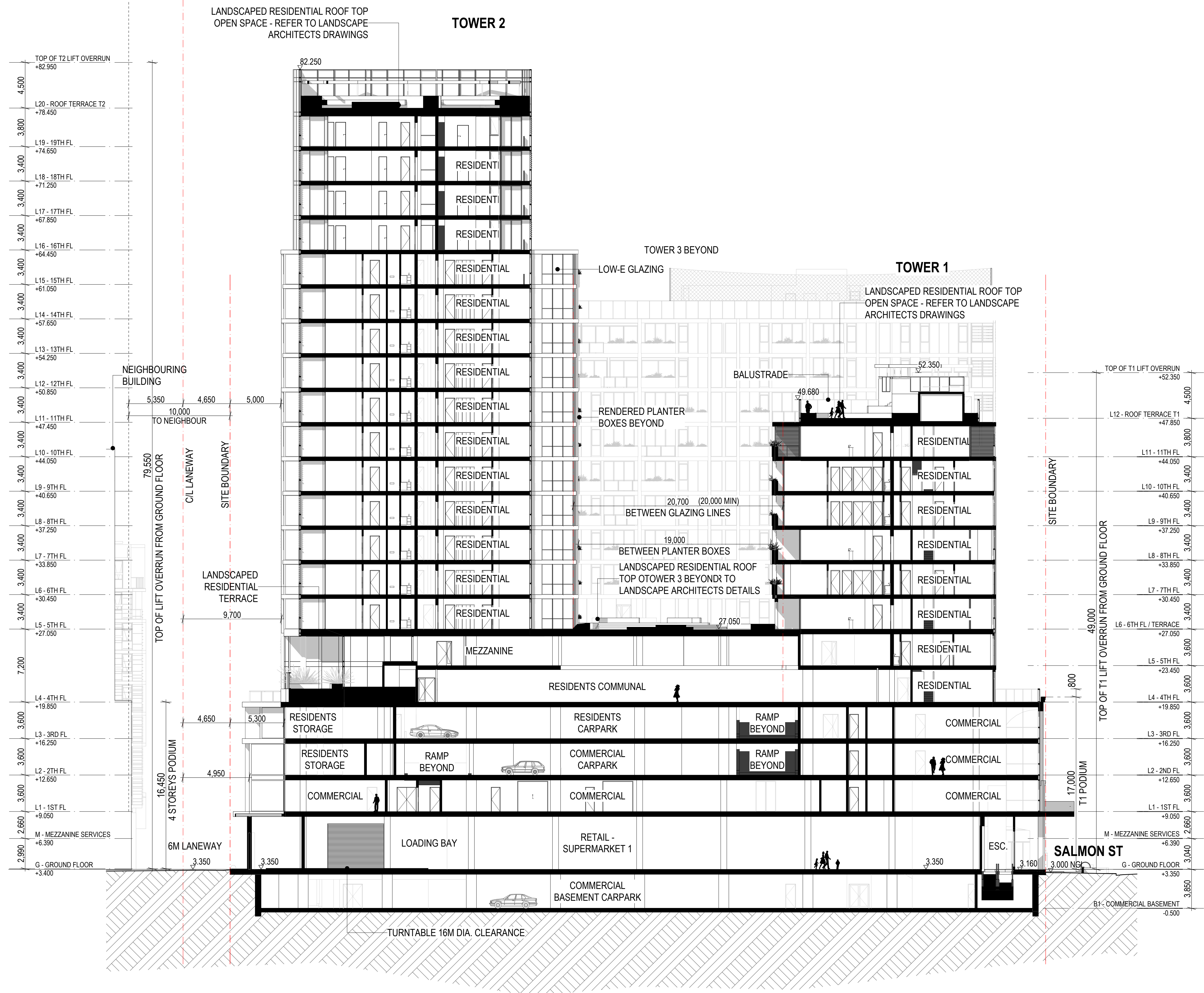
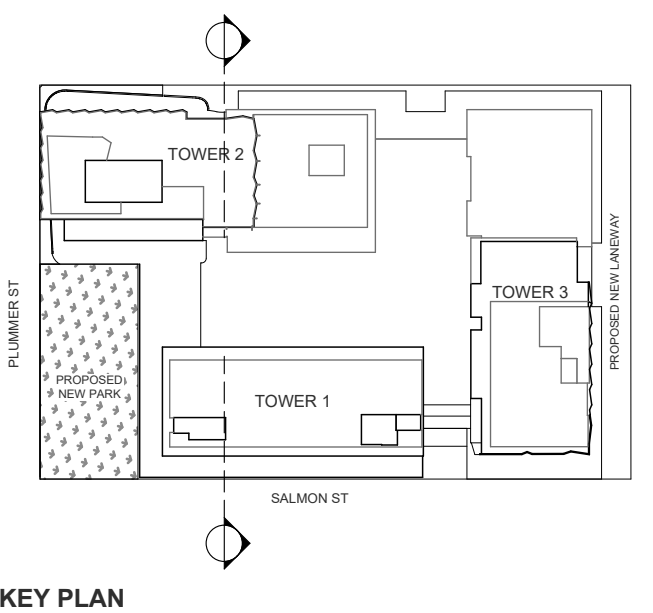












**WIRRAWAY CENTRAL**  
18 - 22 Salmon Street, Port Melbourne  
**ARMSBY ARCHITECTS**  
Design Architects and Energy Consultants

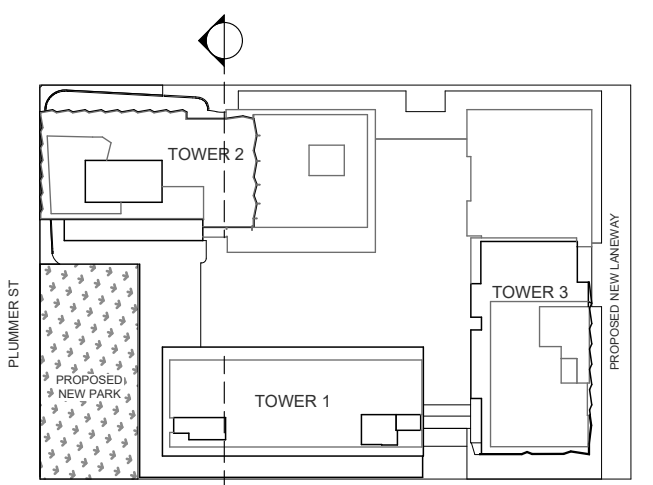
Rev	Description	By	Date
-	TOWN PLANNING ISSUE	ZS	18/12/2020

These drawings are copyright of Armsby Architects. They may not be used or reproduced without express approval of Armsby Architects. Do not scale drawings. Use written dimensions only. Any discrepancy in the drawings or specifications shall be referred to Armsby Architects.

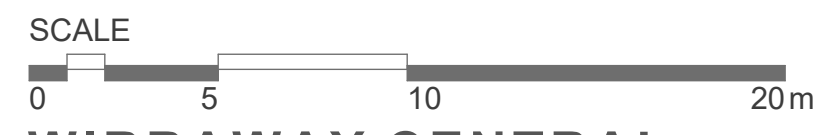
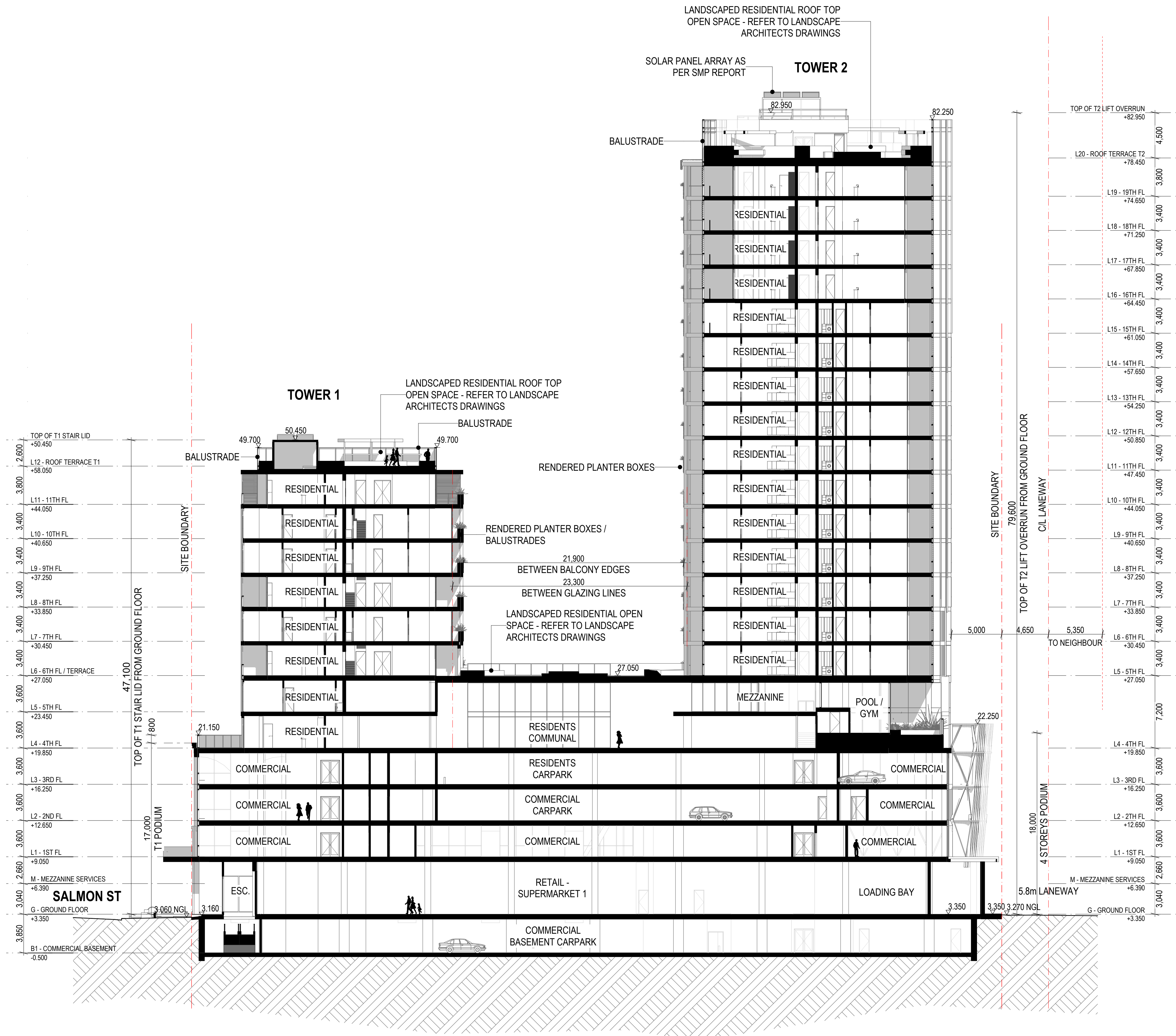
Drawing  
**IE3 - T2 NORTH ELEVATION**  
Drawing Number  
**TP253**

Project Status  
**Town Planning**  
Scale 1:400 @ A3  
Revision





KEY PLAN



**WIRRAWAY CENTRAL**  
 18 - 22 Salmon Street, Port Melbourne  
**ARMSBY ARCHITECTS**  
 Design Architects and Energy Consultants

Rev	Description	By	Date
-	TOWN PLANNING ISSUE	ZS	18/12/2020

These drawings are copyright of Armsby Architects. They may not be used or reproduced without express approval of Armsby Architects. Do not scale drawings. Use written dimensions only. Any discrepancy in the drawings or specifications shall be referred to Armsby Architects.

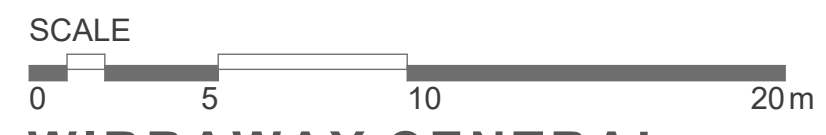
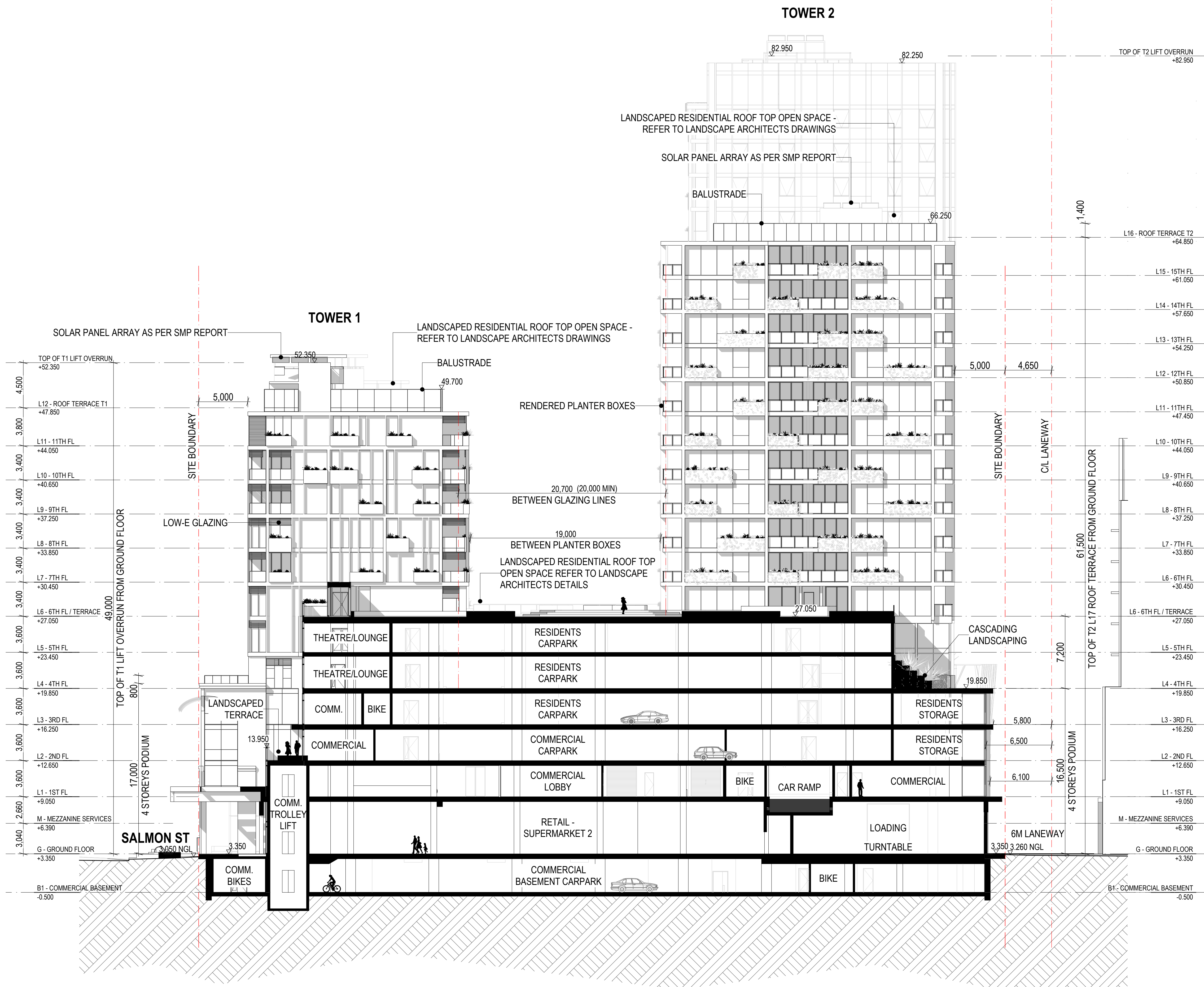
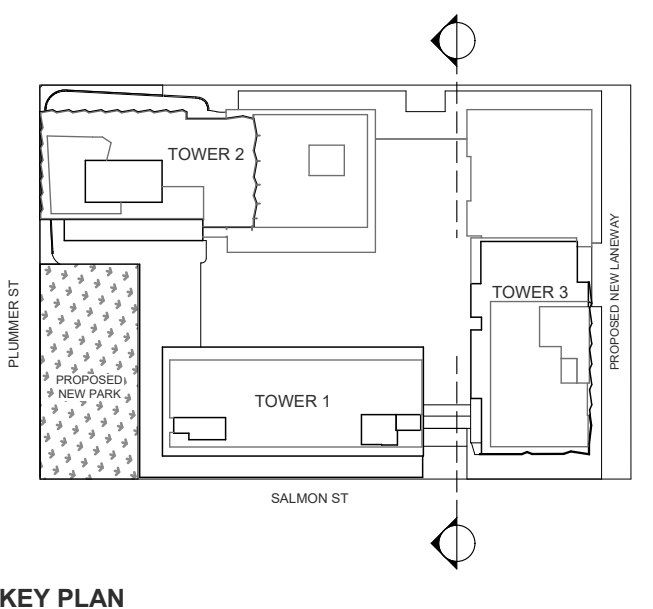
Drawing  
**IE4 - T4 SOUTH ELEVATION**  
 Drawing Number  
**TP254**

Project Status  
**Town Planning**  
 Scale 1:400 @ A3  
 Revision









**WIRRAWAY CENTRAL**  
 18 - 22 Salmon Street, Port Melbourne  
**ARMSBY ARCHITECTS**  
 Design Architects and Energy Consultants

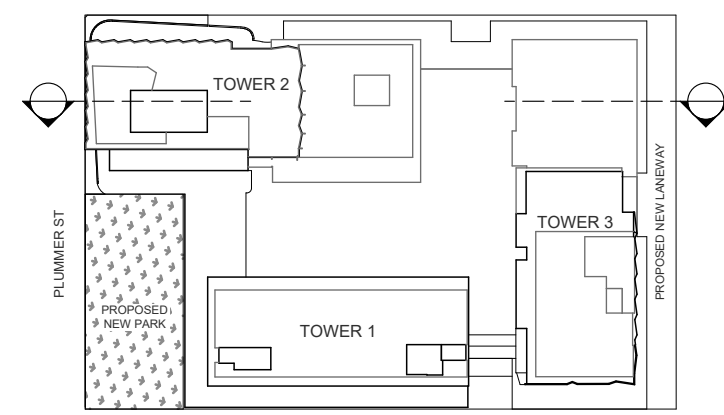
Rev	Description	By	Date
-	TOWN PLANNING ISSUE	ZS	18/12/2020

These drawings are copyright of Armsby Architects. They may not be used or reproduced without express approval of Armsby Architects. Do not scale drawings. Use written dimensions only. Any discrepancy in the drawings or specifications shall be referred to Armsby Architects.

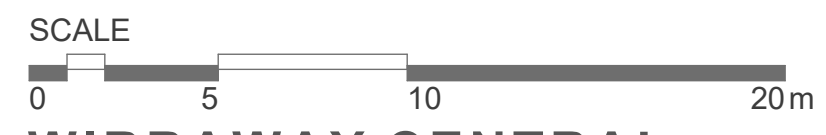
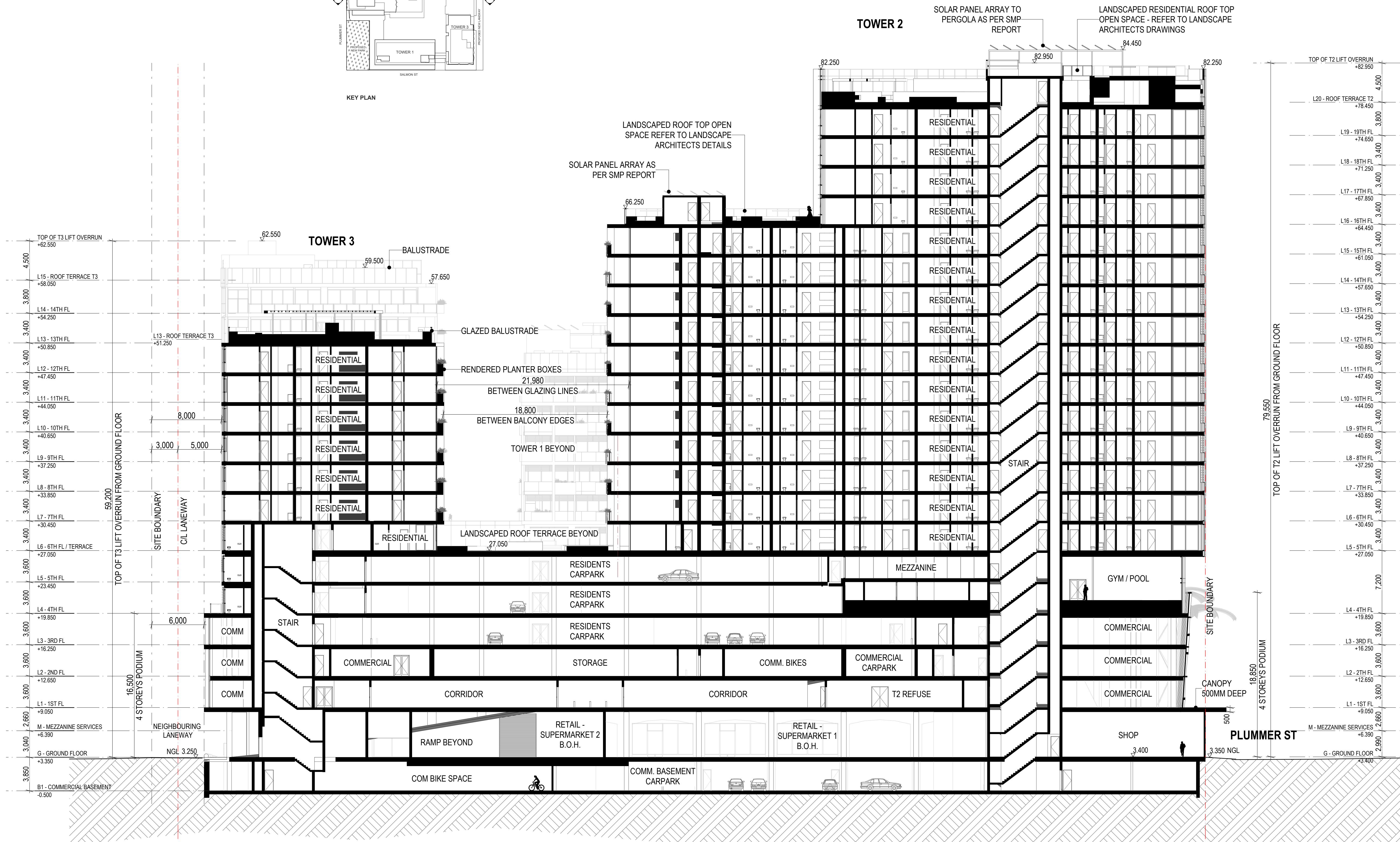
Drawing  
**IE6 - T1 SOUTH ELEVATION**  
 Drawing Number  
**TP256**

Project Status  
**Town Planning**  
 Scale 1:400 @ A3  
 Revision





KEY PLAN



**WIRRAWAY CENTRAL**  
 18 - 22 Salmon Street, Port Melbourne  
**ARMSBY ARCHITECTS**  
 Design Architects and Energy Consultants

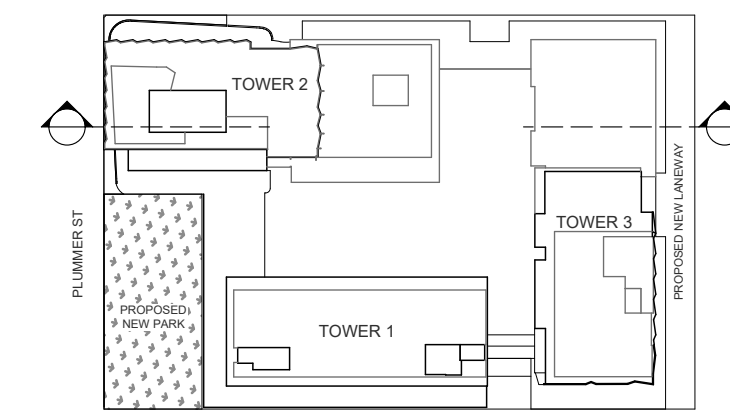
Rev	Description	By	Date
-	TOWN PLANNING ISSUE	ZS	18/12/2020

These drawings are copyright of Armsby Architects. They may not be used or reproduced without express approval of Armsby Architects. Do not scale drawings. Use written dimensions only. Any discrepancy in the drawings or specifications shall be referred to Armsby Architects.

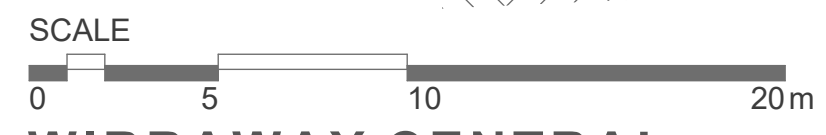
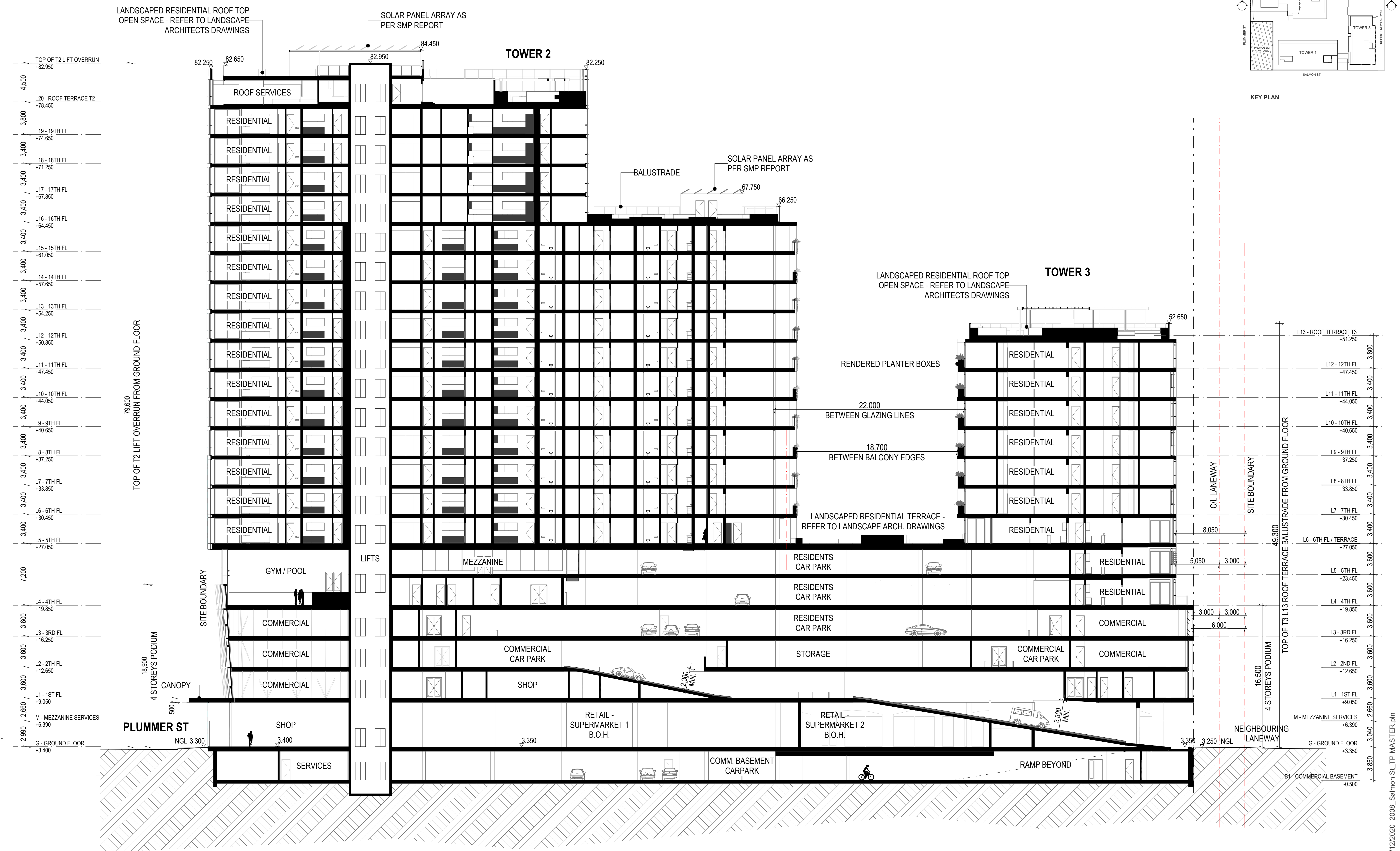
Drawing  
**SECTION A-A**  
 Drawing Number  
**TP301**

Project Status  
**Town Planning**  
 Scale 1:400 @ A3  
 Revision





KEY PLAN



**WIRRAWAY CENTRAL**  
18 - 22 Salmon Street, Port Melbourne  
**ARMSBY ARCHITECTS**  
Design Architects and Energy Consultants

Rev	Description	By	Date
-	TOWN PLANNING ISSUE	ZS	18/12/2020

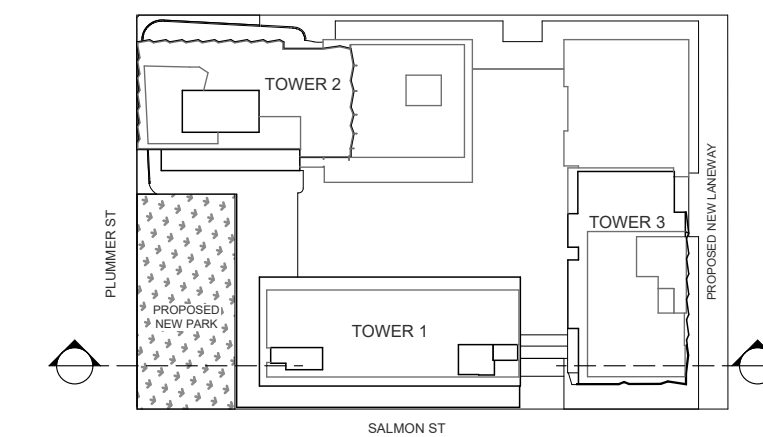
These drawings are copyright of Armsby Architects. They may not be used or reproduced without express approval of Armsby Architects. Do not scale drawings. Use written dimensions only. Any discrepancy in the drawings or specifications shall be referred to Armsby Architects.

Drawing  
**SECTION B-B**  
Drawing Number  
**TP302**

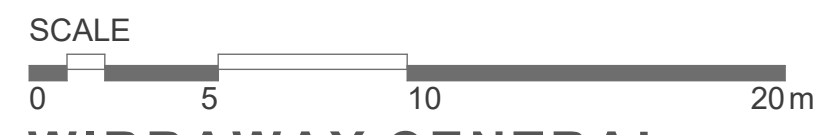
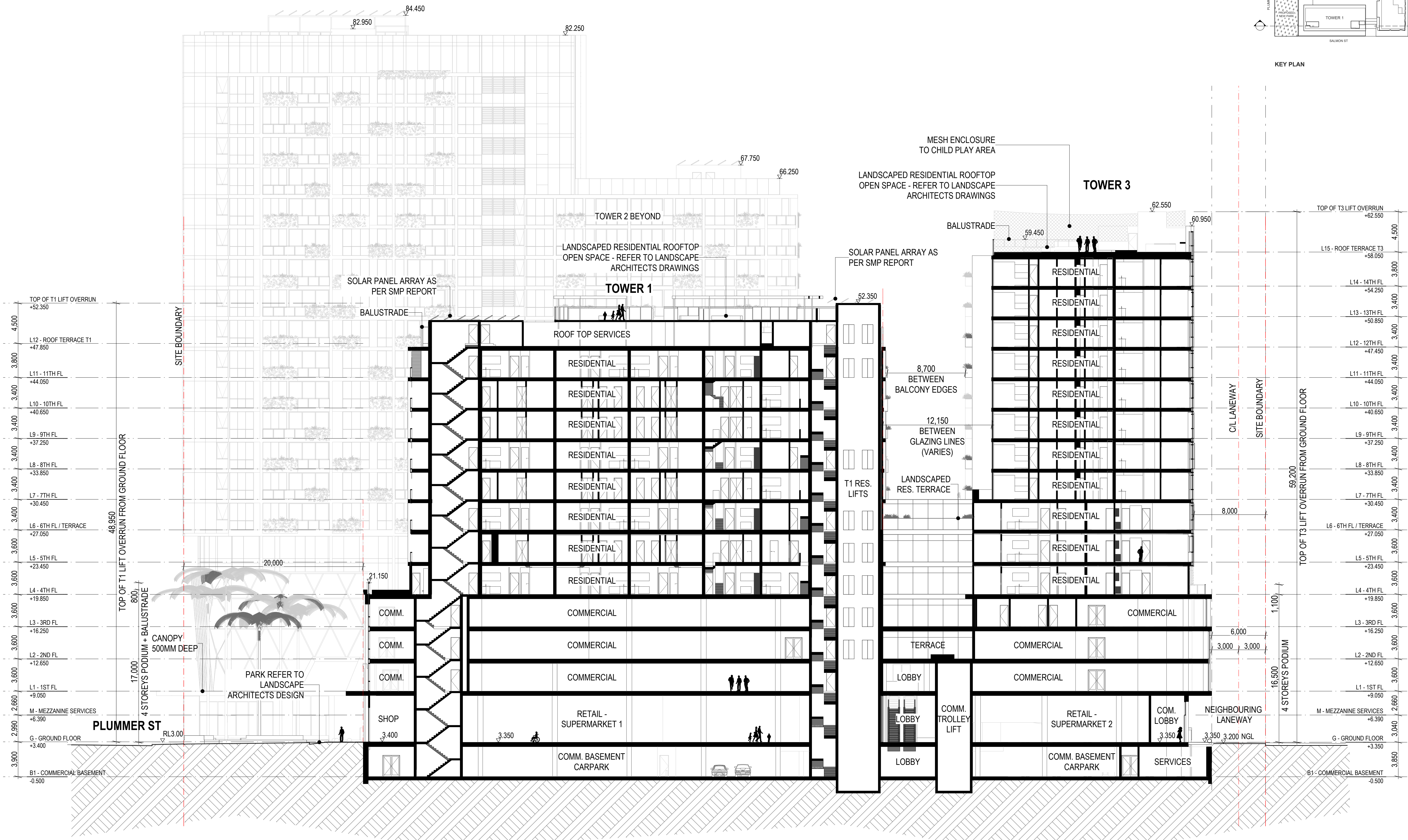
Project Status  
**Town Planning**  
Scale 1:400 @ A3  
Revision

18/12/2020 2008\_Salmon St\_TP\_MASTER.pln





KEY PLAN



**WIRRAWAY CENTRAL**  
 18 - 22 Salmon Street, Port Melbourne  
**ARMSBY ARCHITECTS**  
 Design Architects and Energy Consultants

Rev	Description	By	Date
-	TOWN PLANNING ISSUE	ZS	18/12/2020

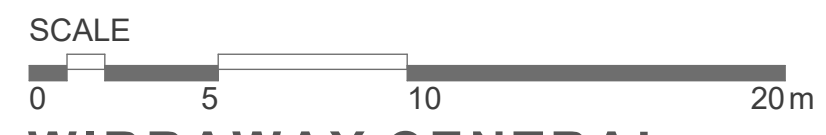
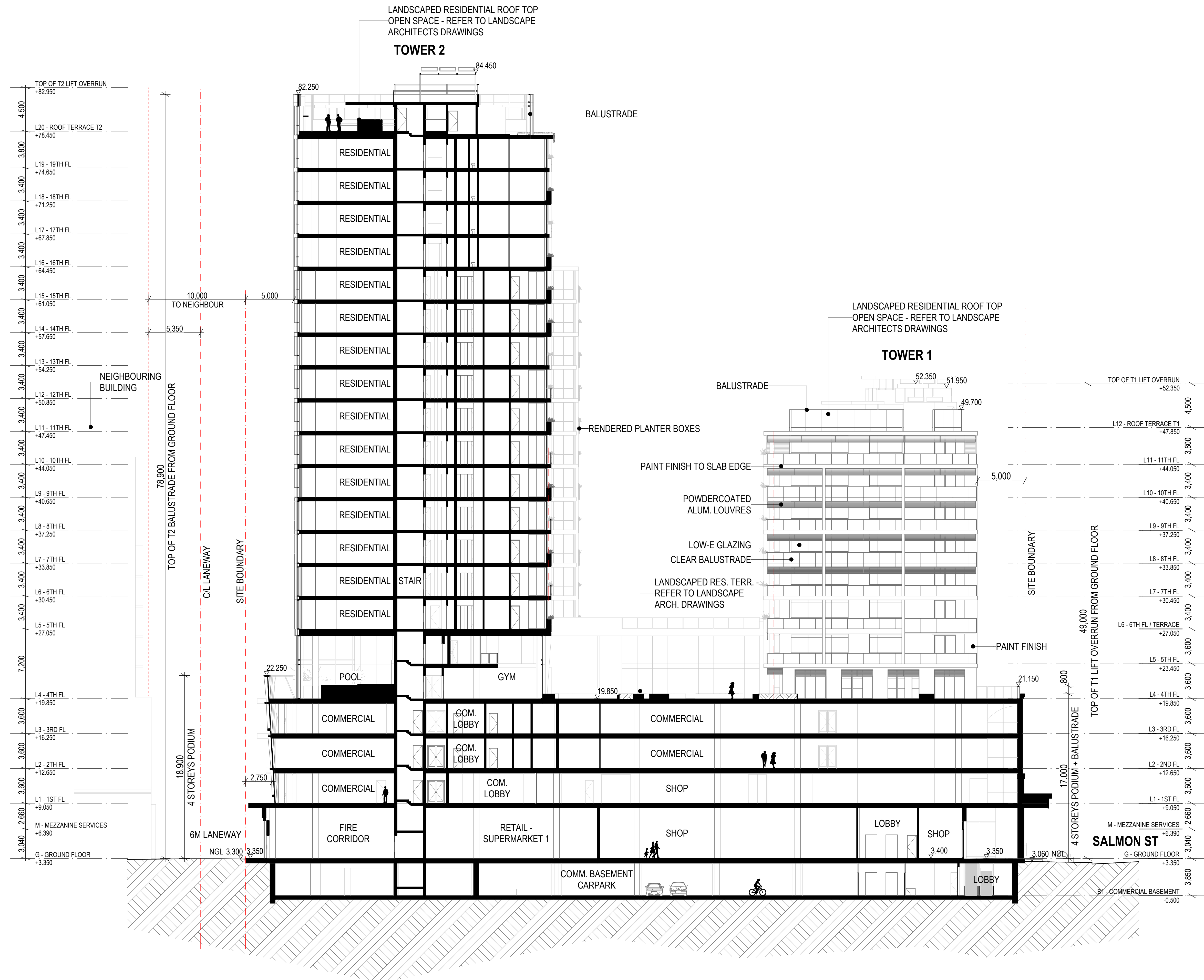
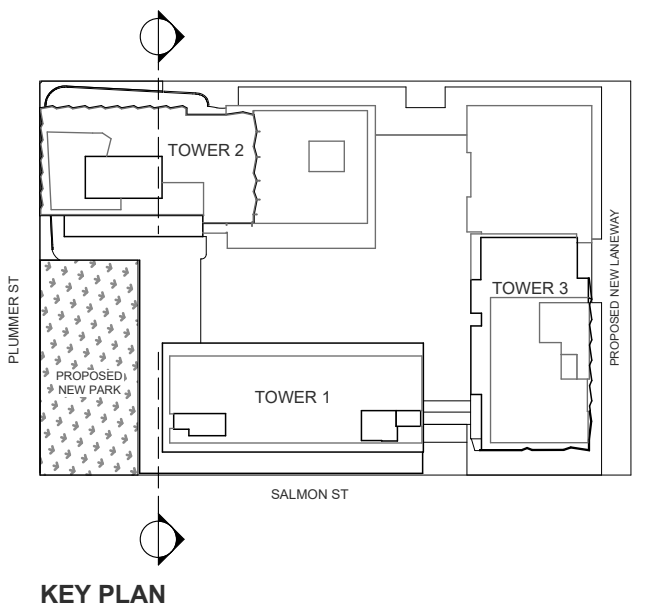
These drawings are copyright of Armsby Architects. They may not be used or reproduced without express approval of Armsby Architects. Do not scale drawings. Use written dimensions only. Any discrepancy in the drawings or specifications shall be referred to Armsby Architects.

Drawing  
**SECTION C-C**  
 Drawing Number  
**TP303**

Project Status  
**Town Planning**  
 Scale 1:400 @ A3  
 Revision

18/12/2020 2008\_Salmon St\_TP\_MASTER.pn





**WIRRAWAY CENTRAL**  
 18 - 22 Salmon Street, Port Melbourne  
**ARMSBY ARCHITECTS**  
 Design Architects and Energy Consultants

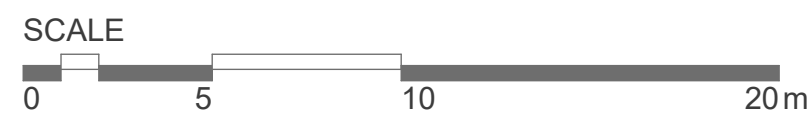
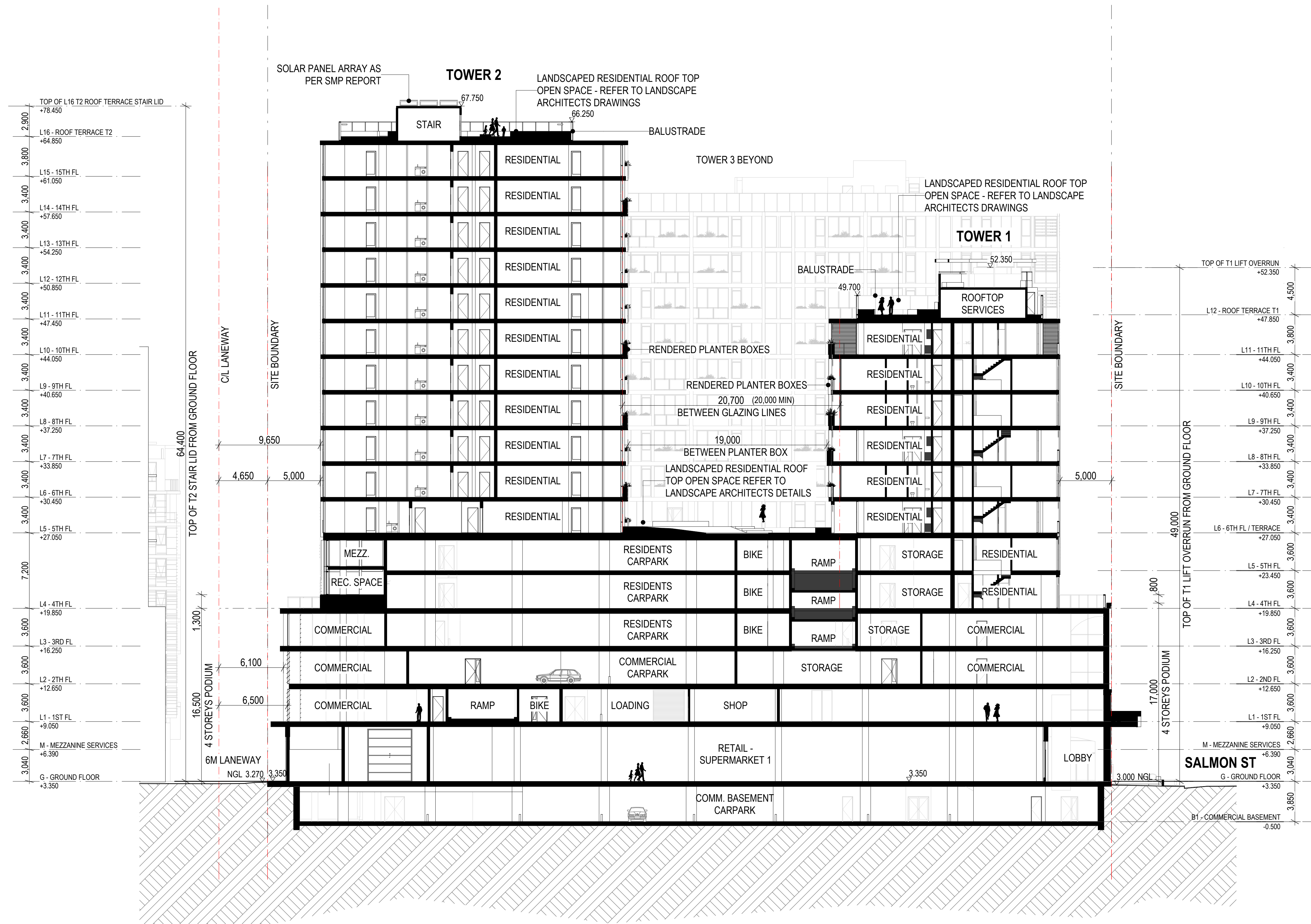
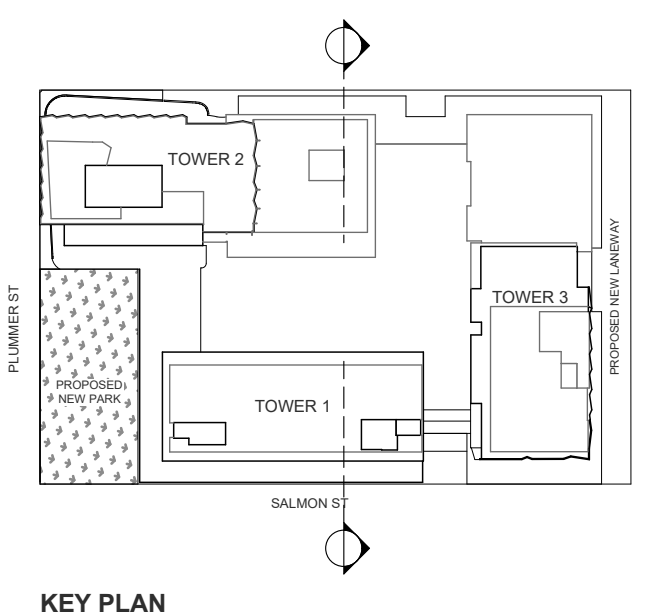
Rev	Description	By	Date
-	TOWN PLANNING ISSUE	ZS	18/12/2020

These drawings are copyright of Armsby Architects. They may not be used or reproduced without express approval of Armsby Architects. Do not scale drawings. Use written dimensions only. Any discrepancy in the drawings or specifications shall be referred to Armsby Architects.

Drawing  
**SECTION D-D**  
 Drawing Number  
**TP304**

Project Status  
**Town Planning**  
 Scale 1:400 @ A3  
 Revision





**WIRRAWAY CENTRAL**  
 18 - 22 Salmon Street, Port Melbourne  
**ARMSBY ARCHITECTS**  
 Design Architects and Energy Consultants

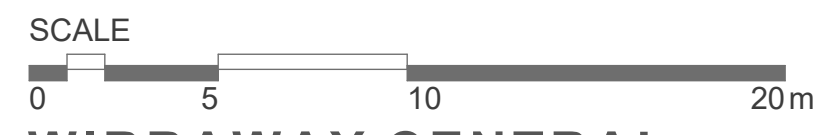
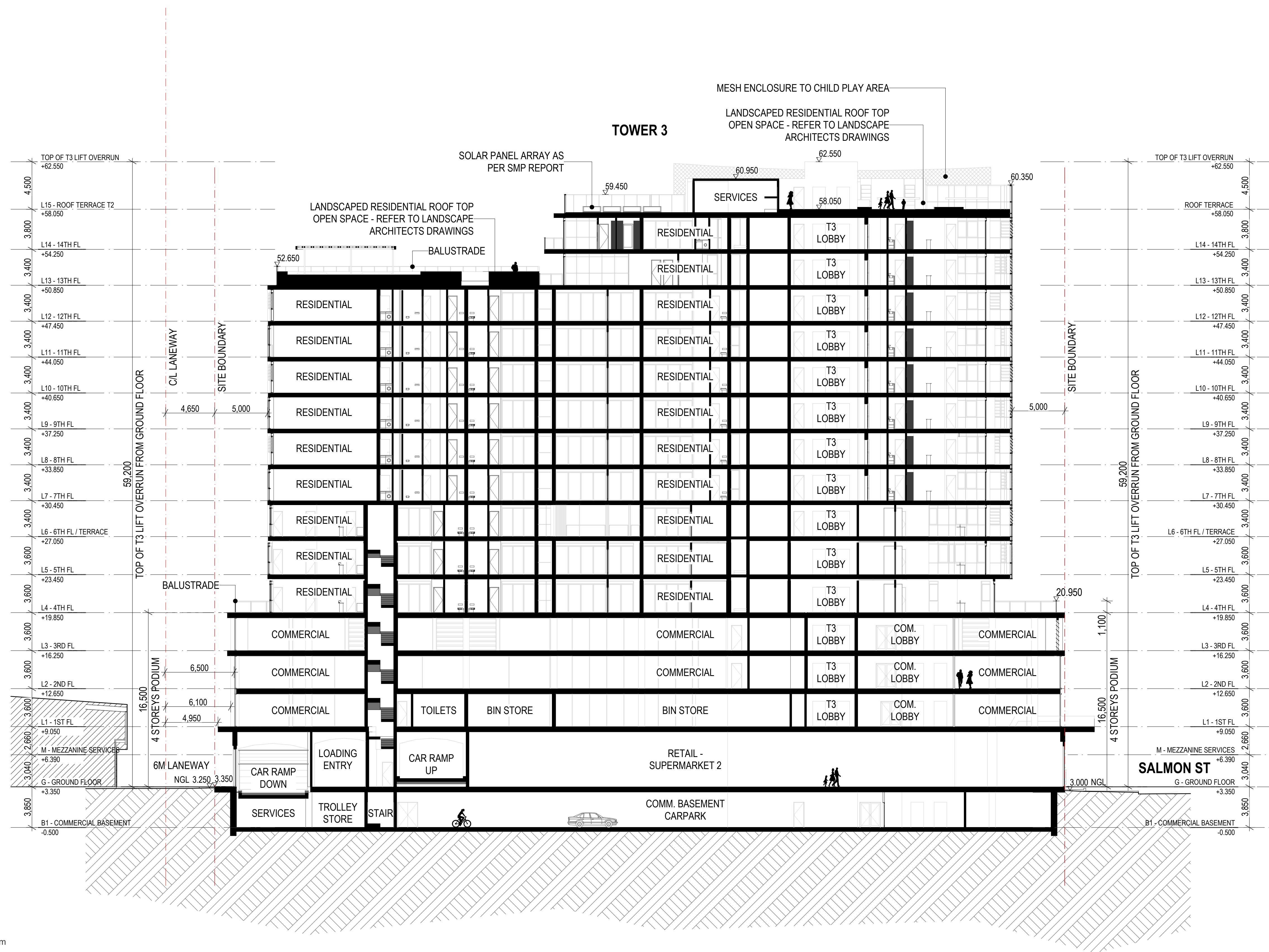
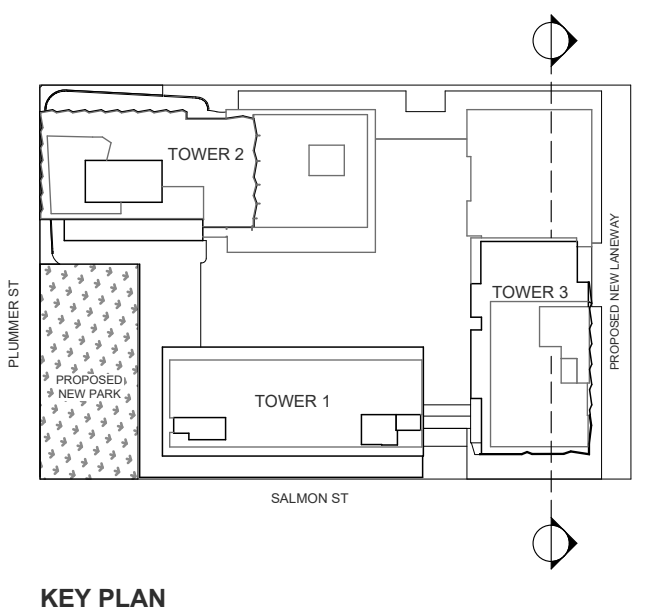
Rev	Description	By	Date
-	TOWN PLANNING ISSUE	ZS	18/12/2020

These drawings are copyright of Armsby Architects. They may not be used or reproduced without express approval of Armsby Architects. Do not scale drawings. Use written dimensions only. Any discrepancy in the drawings or specifications shall be referred to Armsby Architects.

Drawing  
**SECTION E-E**  
 Drawing Number  
**TP305**

Project Status  
**Town Planning**  
 Scale 1:400 @ A3  
 Revision





**WIRRAWAY CENTRAL**  
 18 - 22 Salmon Street, Port Melbourne  
**ARMSBY ARCHITECTS**  
 Design Architects and Energy Consultants

Rev	Description	By	Date
-	TOWN PLANNING ISSUE	ZS	18/12/2020

These drawings are copyright of Armsby Architects. They may not be used or reproduced without express approval of Armsby Architects. Do not scale drawings. Use written dimensions only. Any discrepancy in the drawings or specifications shall be referred to Armsby Architects.

Drawing  
**SECTION F-F**  
 Drawing Number  
**TP306**

Project Status  
**Town Planning**  
 Scale 1:400 @ A3  
 Revision