



PROPOSED MASSING_VIEW FROM KINGSWAY TOWARDS SOUTH EAST

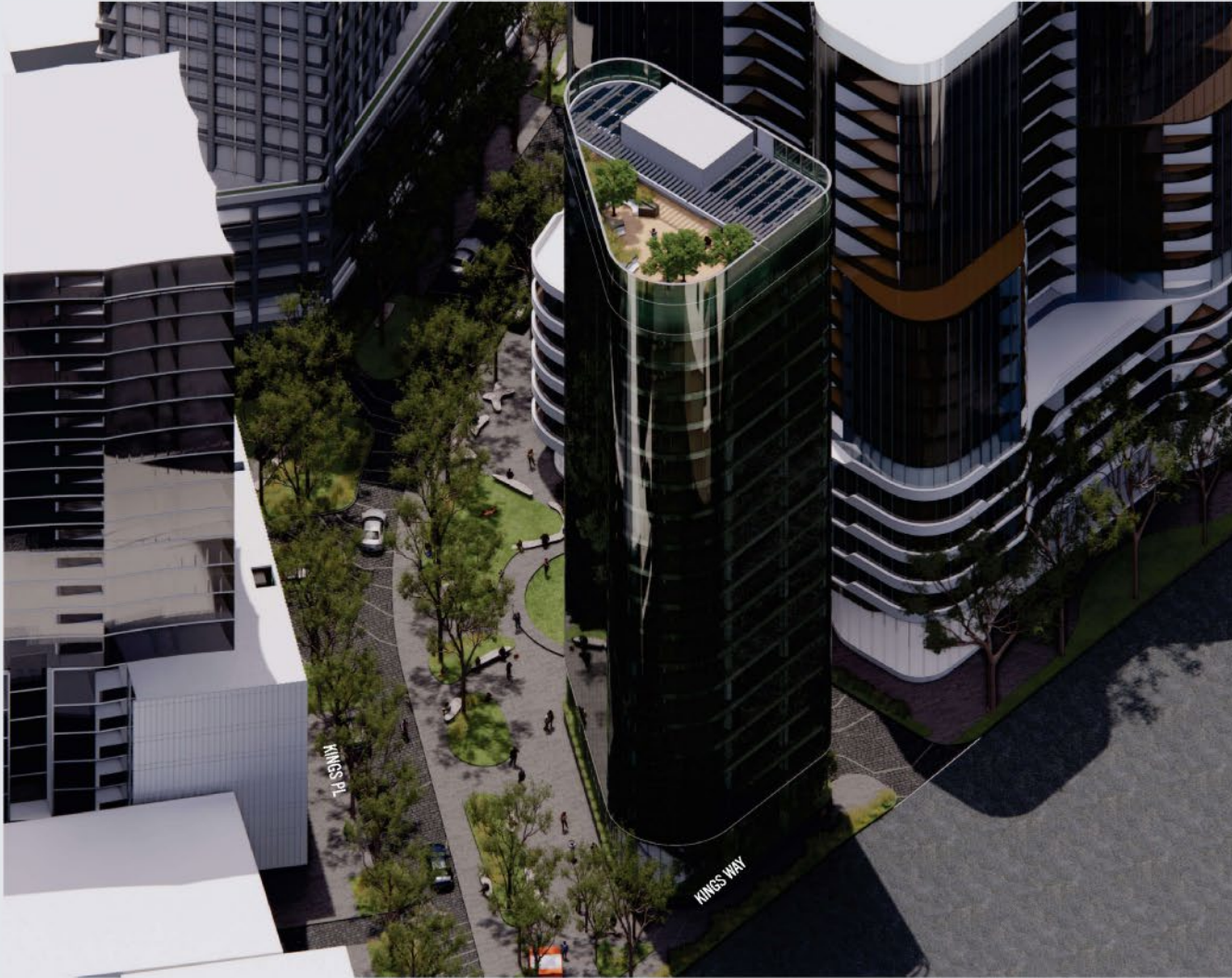


PROPOSED MASSING_VIEW FROM CORNER OF KINGS PLACE & COBDEN STREET



ARCHITECTURE

CONCEPT

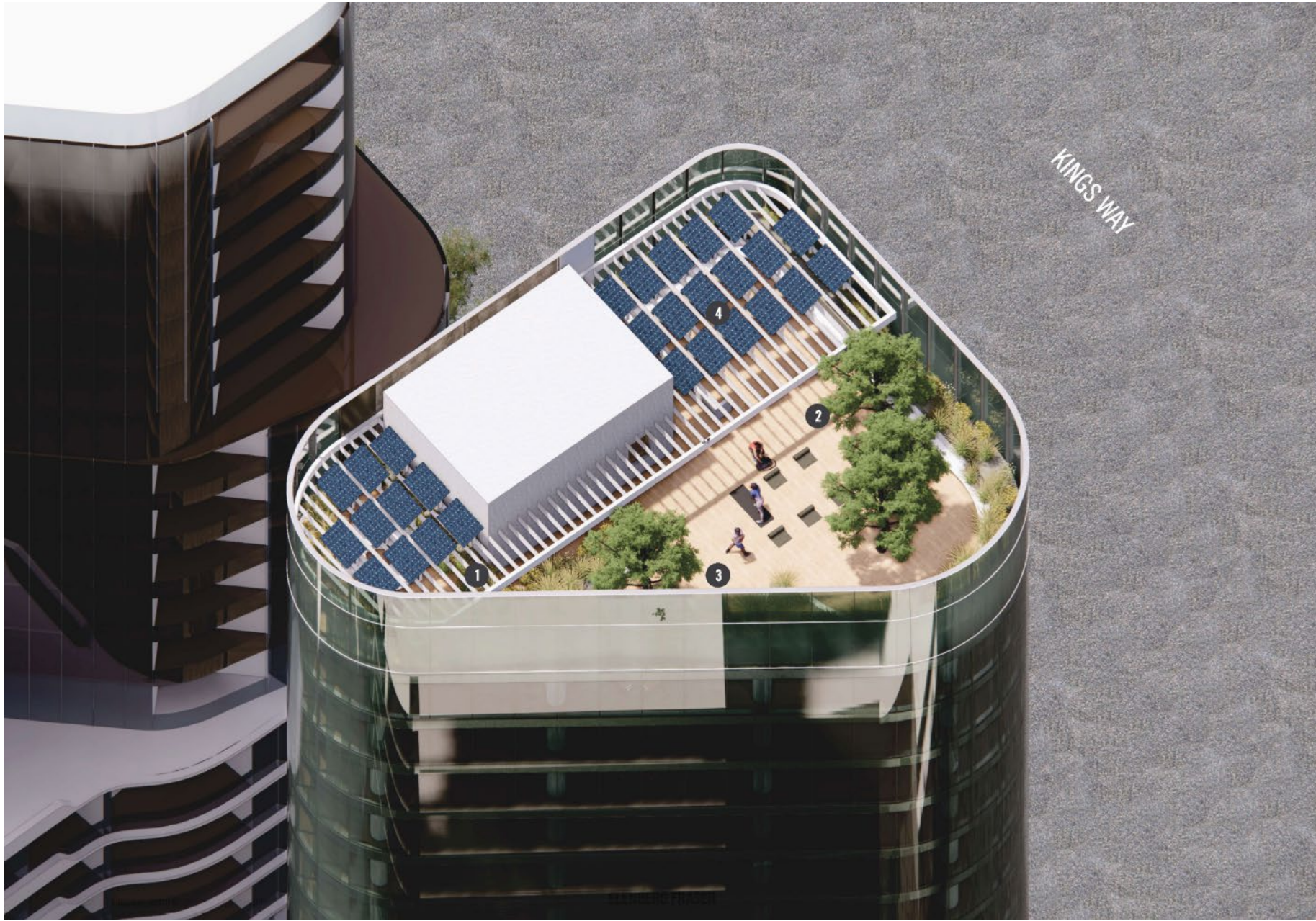


ROOFTOP

OFFICE

GROUND PLANE





AERIAL VIEW OF THE PUBLIC REALM_PROPOSED

