



# DESIGN & DEVELOPMENT AWARDS 2022

EXHIBITION CATALOGUE



## CONTENTS

### Winners and commendations

#### Residential: new build

- Winner: Lambeth Cousin, Richard Kerr Architecture 6
- Winner: Palimpsest House, Coy Yiontis Architects 7

#### Residential: alteration or addition

- Winner: Little Richardson, Mc Mahon and Nerlich Architects 8
- Commendation: Lantern House, Topology Studio 9
- Commendation: Ripponlea House, Luky Fry Architecture and Interiors 10

#### Multi-unit and mixed use

- Winner: Ruskin Elwood, Hip V. Hype 11

#### Public and institutional

- Winner: Victorian Pride Centre, Brearley Architects & Urbanists and Grant Amon Architects 12

#### Interior: non residential

- Winner: Parks Victoria Albert Park Office and Depot, Harrison and White with Archier 13

#### Strategy

- Winner: Cooling South Melbourne Strategy, University of New South Wales Built Environment High Performance Architecture Team 14

#### Heritage

- Winner: St Huberts, Robson Rak Architecture 15
- Commendation: Victoria, Finnis Architects 16

#### Sustainability

- Winner: Stokehouse, Van Haandel Group 17
- Commendation: Victorian Pride Centre, Brearley Architects & Urbanists and Grant Amon Architects 18

### Finalists

#### Residential: new build

- Iron House, Empire Interiors and Sketch Design 20
- Heath St House, Planning Collaborative 20

#### Residential: alteration or addition

- Envelop House, Mc Mahon and Nerlich 21

#### Multi-unit and mixed use

- Adela Apartments, Jost Architects 21
- Victoria, Finnis Architects 22
- Montague, Mills Gorman Architects 22

#### Interior: non residential

- Victorian Pride Centre, Brearley Architects & Urbanists and Grant Amon Architects 23

#### Heritage

- Little Richardson, Mc Mahon and Nerlich Architects 23

#### Sustainability

- Adela Apartments, Jost Architects 24
- Parks Victoria Albert Park Office and Depot, Harrison and White with Archier 24
- Ruskin Elwood, Hip V. Hype 25

### Award categories 25

### Map of finalists 26

## MAYOR'S MESSAGE



Our City is again proud to celebrate design excellence with the 2022 Port Phillip Design and Development Awards.

From apartments to urban art, our Awards have been showcasing innovative and imaginative design across Port Phillip since 1998 and we are delighted with the continuing high standard of entries. We are home to many significant heritage buildings and neighbourhoods with unique character while also promoting innovation to create new sustainable spaces.

It's crucial that Port Phillip continues to feature the best of the old and the new as this helps lift liveability for everyone in our City. This is so important that the Community Vision, at the heart of our 2021-31 Council Plan, is for "a liveable and vibrant City that enhances the wellbeing of our community".

Thoughtful and innovative design help us achieve this 10-year Vision by encouraging creativity, engendering a feeling of safety and providing opportunities to create sustainable spaces leading to a greener city. So through great design, we shape the future of our City and conserve our heritage.

We thank every award candidate for their outstanding applications which have all contributed to achieving the Community Vision for our City and look forward to many more fantastic additions in years to come.

**Marcus Pearl**

Mayor  
City of Port Phillip

## JURY CHAIR



### Jill Garner Victorian Government Architect

Jill took the helm of the Office of the Victorian Government Architect in 2015, stepping into the role as a public advocate for architecture and design after more than twenty years in practice.

As an architect, her practice - Garner Davis - has received numerous industry awards for delivering sensitive, crafted public and private work. As a design advisor and advocate in government, she strongly promotes the value of contextual, integrated design thinking and a collaborative approach across design disciplines.

Jill has taught at both RMIT and Melbourne University in architectural design, theory and contemporary history. She is one of the first graduates of the innovative practice-based Masters by Design at RMIT and is a past board member and examiner for the Architects Registration Board Victoria.

In 2018, Jill chaired the national Committee for the Venice Architecture Biennale. She is a Life Fellow of the Australian Institute of Architects and in 2021 she was appointed a Member of the Order of Australia, recognizing her distinguished service to architecture, education and professional associations.

## JURORS



### Heather Cunsolo

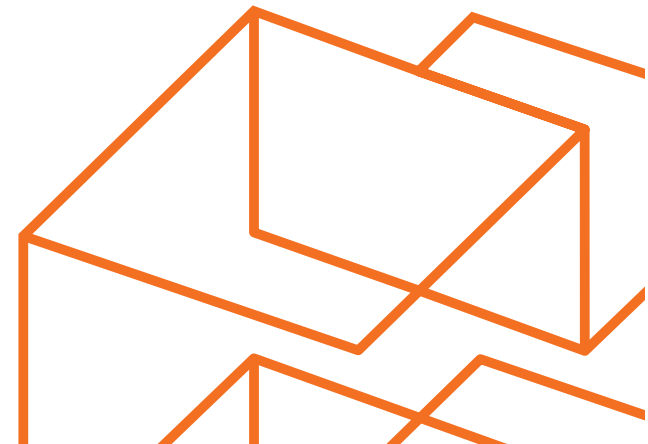
Cr Heather Cunsolo is a Gateway Ward councillor and has a vision for unity in the community. With a background in architecture, small business and mediation, Heather looks forward to the Design and Development Awards continuing to build bridges between residents, designers, businesses and Council. Heather has experience in bringing people together to see vibrancy in the City's streets and the beautification of public spaces.

As the City of Port Phillip grows, she is also keen that the Awards continue to support and celebrate quality property development as an example to the industry.



### Andy Fergus

Andy Fergus is an emerging urban designer and design advocate, passionate about working with communities, ethical developers and government to create successful places. Andy holds a number of concurrent roles as Head of Urban Design at Assemble Communities, Director at Andy Fergus Design Strategy, Co-director of Melbourne Architours and Advocacy Lead at Urban Design Forum. Andy is passionate about design education and building the capacity of the community to more effectively engage in and shape the quality of the built environment.



## JURORS



### Weian Lim

Weian Lim is the founder and director of WALA, an emerging Melbourne-based studio that provides architectural, interior and design services with a specialised focus on residential developments in heritage settings. Notably, WALA won the Heritage Category in the 2020 City of Port Phillip Design Awards for Downside-Up House.

Weian is a proponent for design excellence, and for good design that is playful yet socially and environmentally responsible. He has also shared his experience and knowledge in design studios at the University of Melbourne and Monash University.



### Christina Sirakoff

Cr Christina Sirakoff is a Lake Ward Councillor, resident and highly active community member. Christina brings local perspective about the importance of the City's vibrant streets and protecting and enhancing heritage homes and streetscapes. She is keen to see improvements in apartment and unit development in the city, particularly with regards to open space and liveability.

As a first-time participant and design awards juror, Christina enjoyed sharing her love of good design and the added value it brings to the community.



### Mai Luu

Mai is acting Head of City Design at the City of Port Phillip where she oversees advice on complex public space and built form projects. Mai has worked in the private, public and education sectors and thrives on this collaboration within the design industry. She enjoys coordinating a talented and skilful team, and working closely with resident, business and government stakeholders.

Mai's experience is instrumental to improving design processes that deliver for the Port Phillip community.

The background features a complex, abstract geometric pattern of thick orange lines. These lines form various polygons and shapes, creating a sense of depth and movement. The lines are set against a dark, almost black background, which makes the orange color stand out prominently. The overall effect is modern and dynamic.

**WINNERS AND  
COMMENDATIONS**

RESIDENTIAL DWELLING:  
NEW BUILD

WINNER

**Lambeth Cousin**  
Richard Kerr Architecture

Tucked into a tightly knit and diverse streetscape of terraces, semi-detached homes and flats, Lambeth Cousin contributes a rich palette of crafted brickwork, concrete and folded metal. This is a familiar porch language within a distinctly contemporary home.

As a family home, the living areas are zoned into distinct, cellular spaces, avoiding the pitfalls of the 'too-big' open plan. Slices of light penetrate through reflective courtyards and skylights, defining spaces with light and ventilation. Skilfully resolved sliding doors reveal seamless connections to verdant courtyards. Designed for a family to remain in their beloved neighbourhood, this is a project that has a strong sense of obligation to its street and community.



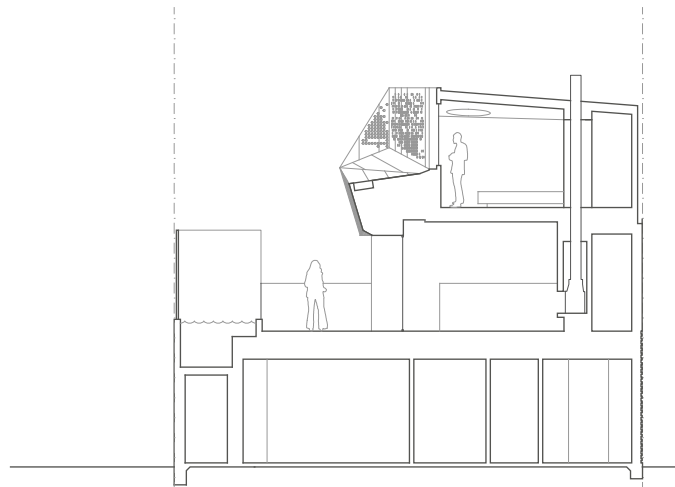
RESIDENTIAL DWELLING:  
NEW BUILD

WINNER

### Palimpsest House Coy Yiontis Architects

Squeezed between grand terrace houses and an extended 1920s home, Palimpsest House is striking in its response to context and a complex brief. As a multi-generational home with independent quarters for adult children below and parent's 'apartment' above, the home offers a range of living configurations.

The existing building's ground floor courtyard and first floor pool were recycled, resulting in a stretched floor plan along its east-west axis. This rejects the typical 'terrace' plan in favour of a long living pavilion which admits winter light while controlling summer sun. The building contributes to the social life of the street with prominent projecting windows and first floor balcony, while protecting the amenity of neighbouring homes.

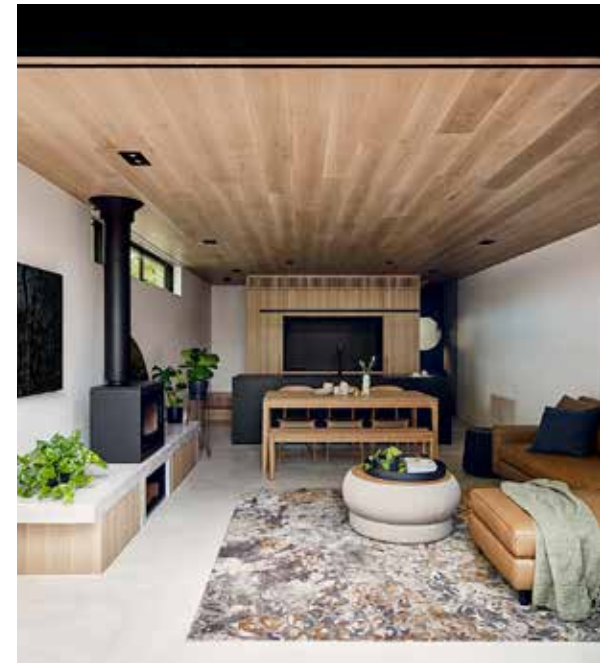


RESIDENTIAL DWELLING:  
ALTERATION OR ADDITION  
**WINNER**

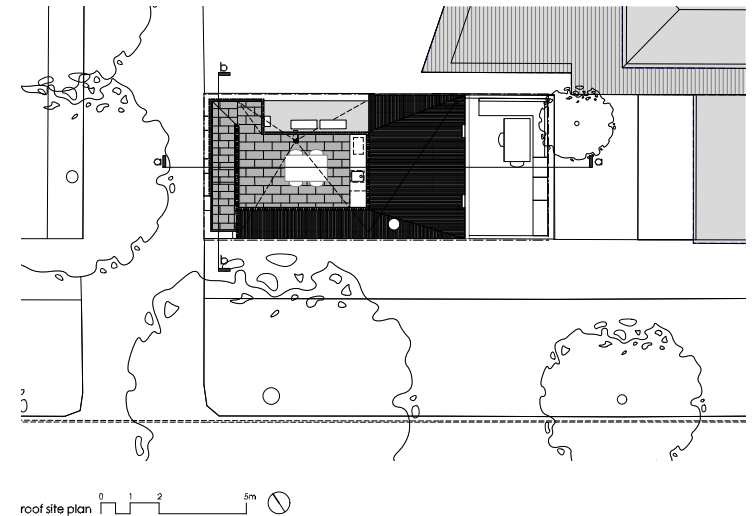
**Little Richardson**  
McMahon and Nerlich

This is an exemplary reinvention of a tired, mute, red brick corner in a street impacted by considerable heritage sensitivity.

The project showcases judicious demolition, subtle remodelling of windows and walls and clever manipulation of spaces within a compact site. It is now a thoroughly contemporary home with surprising and delightful qualities of light and space. A roof terrace is cleverly inserted into the form taking advantage of mature street tree canopies. Little Richardson is a celebration of an existing attachment to place, adding new involvement in its neighbourhood.



▲  
Pre-existing condition





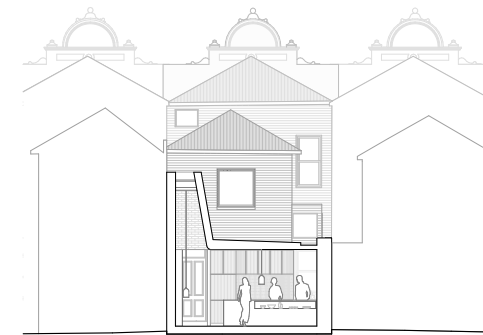
RESIDENTIAL DWELLING:  
ALTERATION OR ADDITION  
COMMENDATION

### Albert Park Lantern House Topology Studio

Lantern House has demonstrated that a well-detailed, modestly-sized addition can have positive contributions to both the property and its immediate urban landscape.

The rear pavilion prioritises ground floor living spaces to face the garden and creates an additional entry point which successfully engages with the laneway.

The stepped masonry wall that forms a double-height space for the 'lantern' not only effectively serves to improve the quality of life in the rear rooms by way of access to natural light, better thermal performance and cross ventilation, but also initiates a point of engagement with the lane and surrounding built landscape.



Section A  
1:100



RESIDENTIAL DWELLING:  
ALTERATION OR ADDITION  
COMMENDATION

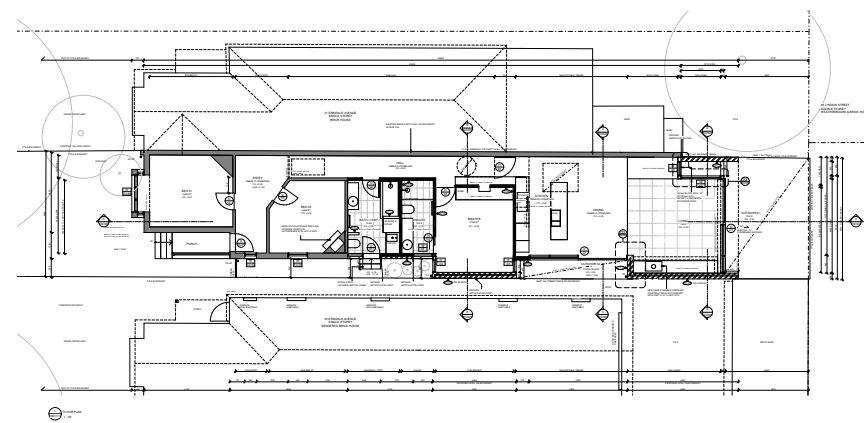
### Ripponlea House

Luke Fry Architecture  
& Interiors

Ripponlea house is conceived with the delicacy of a piece of furniture, demonstrating skill in the design of a relatively modest single level addition to a semi-detached home.

The project demonstrates an almost obsessive care with thresholds, defining subtle differences in the treatment of walls, seating and roof surfaces. The simple volume of the addition is enlivened with the addition of indirect light from skylights, windows to a narrow garden to the side boundary and a large opening to the rear courtyard.

The selection of finishes in soft tones of timber, polished plasterboard and concrete create a textural background to life, while creating a clear dialogue with the restored heritage frontage to the street.



MULTI-UNIT AND MIXED USE  
WINNER

**Ruskin Elwood**  
HIP V. HYPE

Ruskin Elwood inserts welcome modest density into a context of large single homes. The striking street silhouette is akin to a single house before giving way to terraced forms along its canal side. Each frontage is responsive to orientation, ensuring textbook passive solar design. The balconies create a grandstand to the canal edge, promoting a strong visual connection and passive surveillance. A rear driveway humanises arrival with planting and cobblestone treatments for a generous pedestrian realm.

These townhouses are for family living, with careful joinery objects dividing spaces, allowing a choice of being together or apart. Sustainability credentials include high performance glazing, powerwalls, a solar array, all electric operation and no need for fossil fuels. Ruskin is an exemplar in every respect.

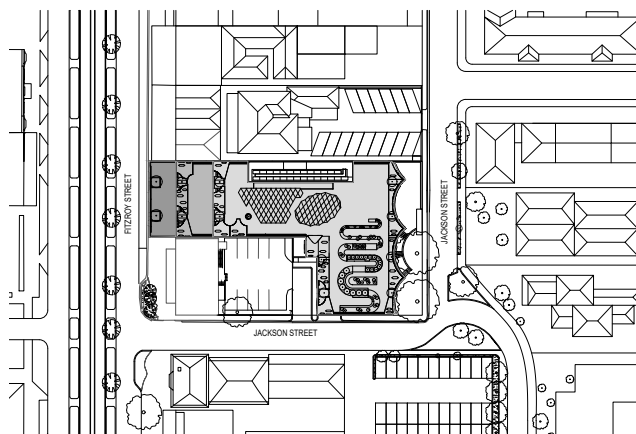


PUBLIC AND INSTITUTIONAL  
WINNER

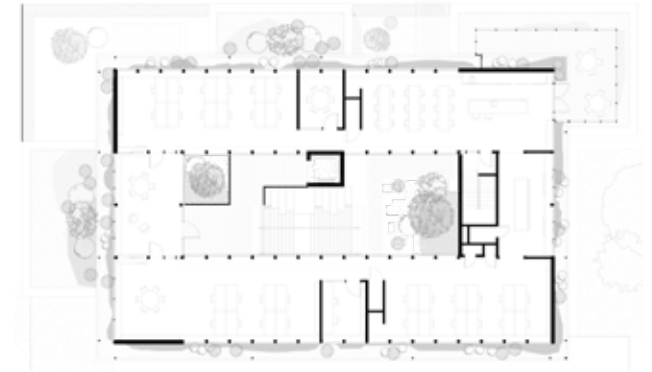
**Victorian Pride Centre**  
BAU GAA  
(Brearley Architects &  
Urbanists and Grant  
Amon Architects)

The Victorian Pride Centre is the proud public home of Victoria's LGBTIQ+ communities and the centre for numerous resident organisations and dozens of other groups that frequent the building. As a major civic building and landmark it reflects St Kilda's rich history: a proud street front, exciting location, and a history of alternative popular culture.

This successful response engages with its neighbours with Moorish-inspired architecture and projecting verandah. The Victorian Pride Centre represents a positive contribution to the local district and iconic Fitzroy Street, and to the LGBTIQ+ and general communities at large.



INTERIOR: NON-RESIDENTIAL  
WINNER



**Parks Victoria, Albert  
Park Office and Depot**  
Harrison and White  
with Archier

The exemplary Parks Victoria Depot and Office deftly handles the challenge of integrating a pavilion building with office functions, while providing the necessary security for industrial like functions - all within a park setting.

The horizontally expressed, transparent, open presentation of the internal spaces successfully engages the internal program with the exterior surrounds. The project has successfully integrated natural landscape elements throughout the interior and overall building form, and its expression and materiality all contribute positively to the surrounding public park.



## STRATEGY

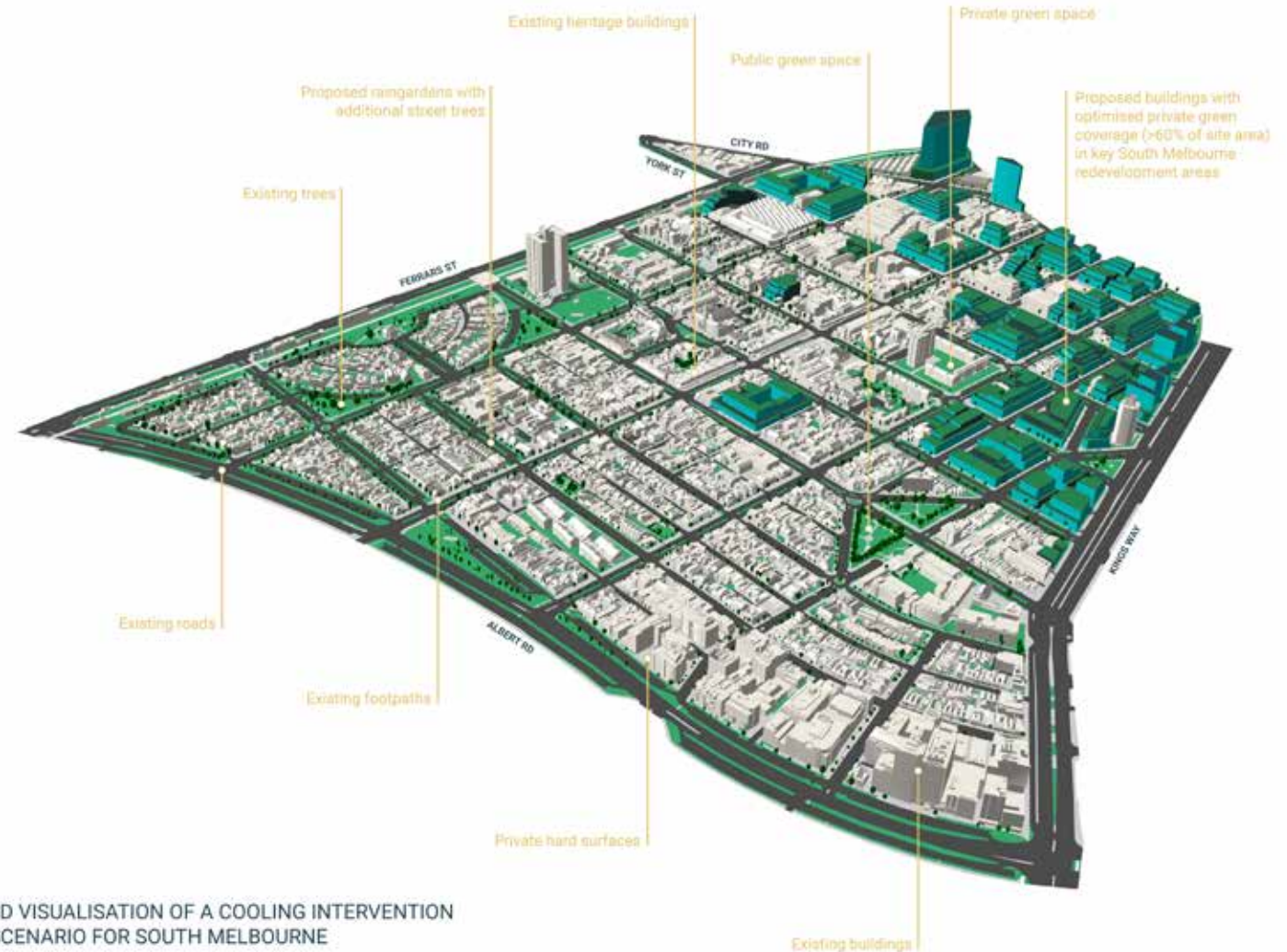
## WINNER

## Cooling South Melbourne – Impact Analysis of Cooling Interventions

### UNSW Built Environment High Performance Architecture Team

The University of New South Wales Cooling South Melbourne Strategy uses on the ground research, future climate projections, and leading-edge scenario modelling to test interventions on how to manage growth, while ensuring urban spaces are comfortable in the current and future conditions.

Key recommendations regarding built form and public realm interventions, will not only inform the structure planning for South Melbourne but are applicable across the whole of the municipality. An exciting model of dense and mixed urbanism that delivers outstanding community benefit, and is a leader for others to emulate.



3D VISUALISATION OF A COOLING INTERVENTION SCENARIO FOR SOUTH MELBOURNE

HERITAGE  
WINNER

**St Huberts**  
Robson Rak Architecture  
and Interiors

St Huberts is a skilful reinvention of a Victorian residence and a celebration of its storied past. It is exemplary in its meticulous restoration of the old building, as evident in the sensitive retention of its Interwar conversions which pays homage to its layered and somewhat eccentric history.

The rear addition clearly defines itself while being sympathetic to the period house; a high level of refinement and thoughtfulness in the treatment of the interiors seamlessly connect the old and the new. Clever spatial planning and the adoption of modern technologies in the extension ensure that the home is equipped to adapt to the changing needs of its occupants over the coming decades.



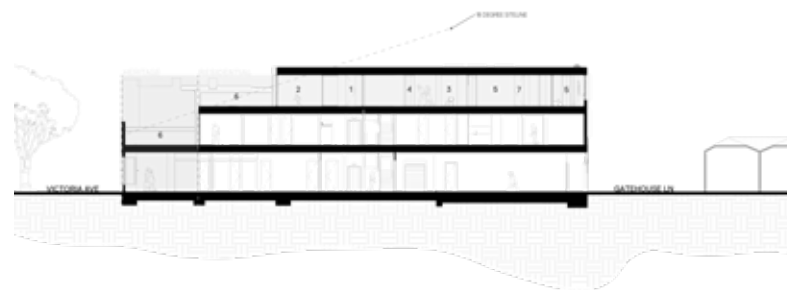
HERITAGE  
COMMENDATION

**Victoria**  
Finnis Architects

Victoria finds the right balance in its exploration of a mixed-used typology that respects the heritage of its existing shopfront while sitting comfortably along a commercial shopping strip and rear residential laneway.

The result is a thoughtfully-measured building form that has highly functional interior spaces and outdoor terraces across its upper levels, which can serve as a model for future replication along the street.

The choice of front and rear facade treatments are well-considered in their context, particularly the laneway-facing facade which display sophistication in its scale, proportion and material selection.





## SUSTAINABILITY

## WINNER

### Stokehouse Precinct Van Haandel Group

The Stokehouse is a leader in sustainability in the hospitality realm by achieving a 5 Star Green Star As Built Rating in 2021. As Built Excellence is rare for any building type. Stokehouse delivers on minimising consumption in more than 15 different areas.

The solid bones of this well-designed workhorse are low emissions concrete, state of the art glazing, operable screens, and feature reclaimed timbers throughout. The veins for heating and cooling are 18 geothermal wells running 60 meters underground.

Among other innovations are chemical free water sanitation and composting of 70,000 kg of food scraps yearly. As a hospitality venue, Stokehouse plays a significant part to model, and then achieve, longevity and sustainability for the whole community.

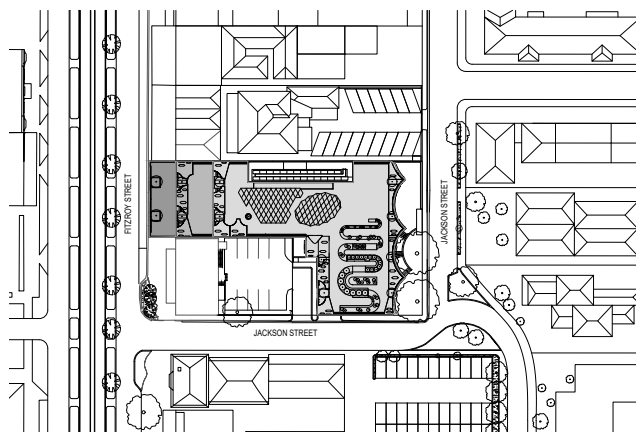
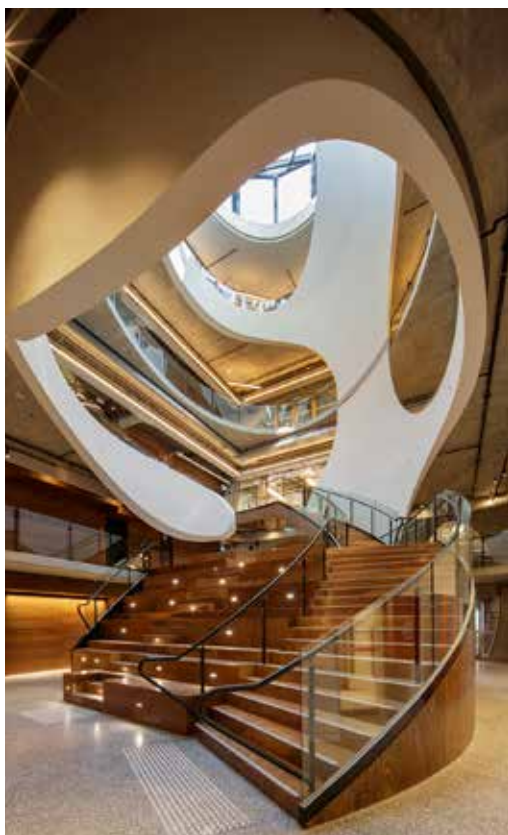


SUSTAINABILITY  
COMMENDATION

**Victorian Pride Centre**  
Brearley Architects &  
Urbanists, and Grant  
Amon Architects

The core pillars of sustainability, extending to economic, environmental and social, are demonstrable key ambitions of this project. Valuable processes to embed sustainable outcomes included workshops, green star design and as-built pathway, sustainability management plan, Built Environment Sustainability Scorecard (BESS) assessment, ambitious tender and construction advice pertaining to sustainability, daylight and energy assessments, rainwater and solar optimisation analysis and design.

We commend the project's sustainability vision, which is also informed by uplifting and invaluable social ambitions, and look forward to the Pride Centre proving itself to be a lasting exemplar for sustainable development.





**FINALISTS**

The image features a light gray background with several thick, vibrant orange lines. These lines are arranged in a complex, abstract pattern. One line starts from the top left and extends diagonally towards the center. Another line starts from the top left and extends diagonally towards the bottom right. A third line starts from the top left and extends diagonally towards the bottom right, crossing the second line. A fourth line starts from the top left and extends diagonally towards the bottom right, crossing the third line. A fifth line starts from the top left and extends diagonally towards the bottom right, crossing the fourth line. A sixth line starts from the top left and extends diagonally towards the bottom right, crossing the fifth line. A seventh line starts from the top left and extends diagonally towards the bottom right, crossing the sixth line. A vertical line starts from the top center and extends downwards to the center. A diagonal line starts from the top right and extends towards the center. The word "FINALISTS" is positioned in the center-right area of the image, in a bold, black, sans-serif font.

RESIDENTIAL DWELLING:  
NEW BUILD

FINALIST



**Iron House**  
Empire Interiors and Sketch Design

RESIDENTIAL DWELLING:  
NEW BUILD

FINALIST



**Heath Street**  
Planning Collaborative

RESIDENTIAL DWELLING:  
ALTERATION OR ADDITION

FINALIST



**Envelop House**  
Mcmahon and Nerlich

MULTI-UNIT AND MIXED USE

FINALIST



**Adela Apartments**  
Jost Architects

MULTI-UNIT AND MIXED USE  
FINALIST



**Montague**  
Mills Gorman Architects

PUBLIC AND INSTITUTIONAL  
FINALIST



**Parks Victoria Albert Park Office and Depot**  
Harrison and White with Archier

INTERIOR: NON-RESIDENTIAL  
FINALIST



**Victorian Pride Centre**  
Brearley Architects & Urbanists and Grant Amon Architects

HERITAGE  
FINALIST



**Little Richardson**  
McMahon and Nerlich Architects

SUSTAINABILITY  
FINALIST



**Adela Apartments**  
Jost Architects

SUSTAINABILITY  
FINALIST



**Parks Victoria Albert Park Office and Depot**  
Depot, Harrison and White with Archier



SUSTAINABILITY  
FINALIST

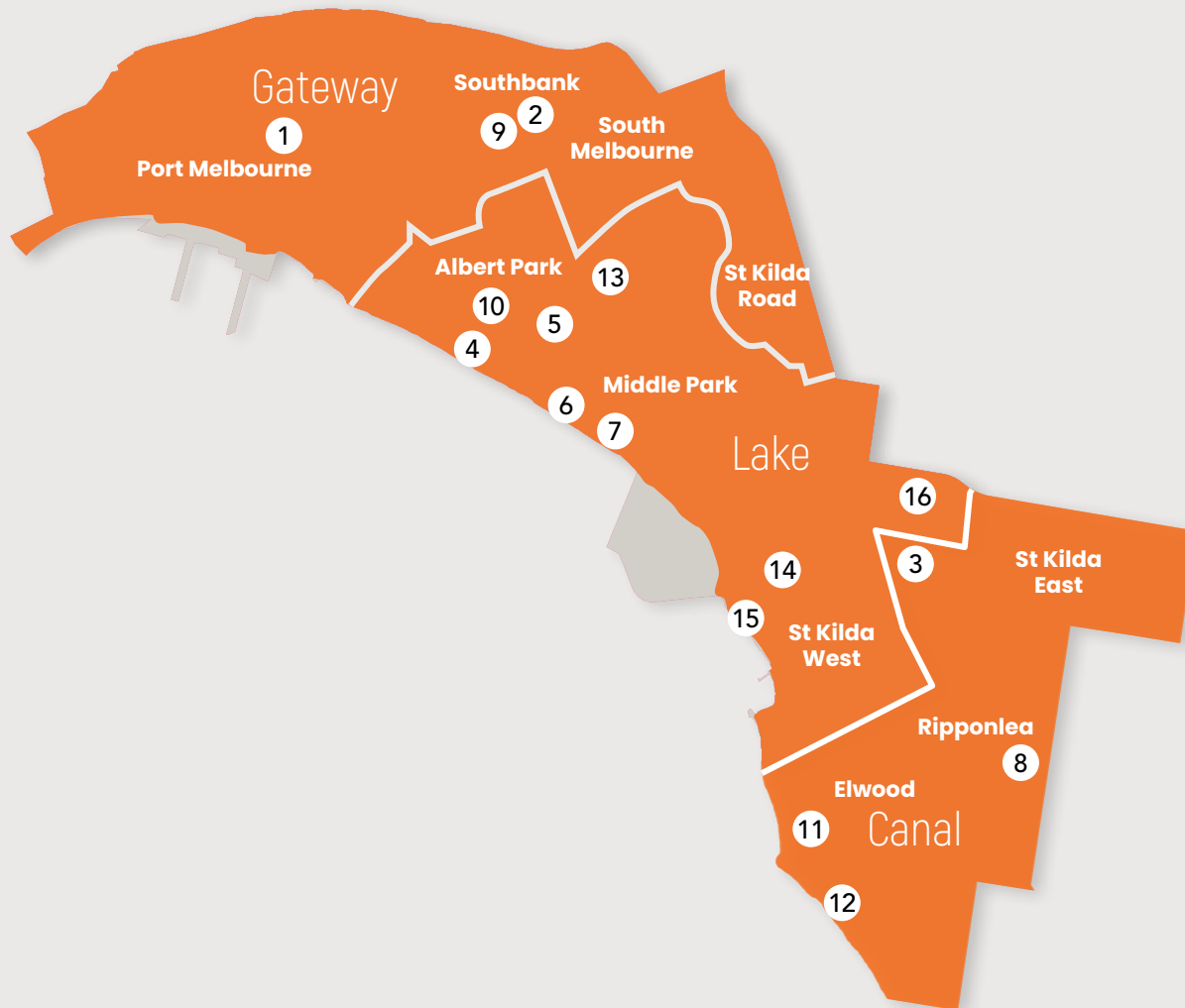


Ruskin Elwood  
Hip V. Hype

## AWARD CATEGORIES

Award category	Description	Example project
<b>Residential dwelling: new build</b>	Projects in this category must be a new build self-contained residential dwelling	<ul style="list-style-type: none"> <li>• New home</li> <li>• Not part of a body corporate</li> </ul>
<b>Residential dwelling: alteration / addition</b>	Projects in this category must be an alteration and/or addition to an existing self-contained residential dwelling	<ul style="list-style-type: none"> <li>• Existing home</li> <li>• Not part of a body corporate</li> </ul>
<b>Multi-unit and mixed use</b>	Projects in this category must be predominantly residential and comprise of two or more self-contained dwellings	<ul style="list-style-type: none"> <li>• Apartments or units</li> <li>• High rise mixed use residential</li> </ul>
<b>Strategy or plan</b>	This category recognises strategic projects that have assisted with the conceptual re-imagining of the built environment. It is open to institutions, the private sector, community organisations and collaborations	<ul style="list-style-type: none"> <li>• Masterplan</li> <li>• Strategy or guideline</li> <li>• Research project (private and public)</li> </ul>
<b>Public and institutional</b>	Projects in this category are predominantly of a public or institutional nature, including educational, recreational, commercial or public realm	<ul style="list-style-type: none"> <li>• Educational facility</li> <li>• Theatre</li> <li>• Commercial building</li> <li>• Sports facility</li> </ul>
<b>Art by development contribution</b>	Projects in this category must be art work delivered by development contribution which is innovative and integrated	<ul style="list-style-type: none"> <li>• Temporary or permanent installation</li> <li>• Mural, sculpture, lighting</li> </ul>
<b>Interior : non-residential</b>	Projects in this category must be a non-residential interior fit out or retro-fit within a new or existing building. <b>Note:</b> Residential interiors are included in categories 1, 2 and 3	<ul style="list-style-type: none"> <li>• New or retrofit interior design</li> <li>• Hospitality or retail</li> <li>• Office</li> <li>• Educational</li> <li>• Other commercial</li> </ul>
<b>Sustainability</b>	Projects in this category must demonstrate holistic and innovative approaches to achieving best practice sustainable design outcomes in the built environment.	Any of the above
<b>Heritage</b>	This category is for any built conservation project developed in accordance with the Australian ICOMOS Burra Charter, or any adaptive reuse of a heritage structure.	Any of the above

# MAP OF FINALISTS



- 1 Heath St House**  
- Planning Collaborative
- 2 Iron House**  
- Empire Interiors and Sketch Design
- 3 Lambeth Cousin**  
- Richard Kerr Architecture
- 4 Lantern House**  
- Topology Studio
- 5 Little Richardsdon**  
- McMahon and Nerlich Architects
- 6 Palimpsest House**  
- Coy Yiontis Architects
- 7 Envelop House**  
- McMahon and Nerlich Architects
- 8 Ripponlea House**  
- Luke Fry Architecture and Interiors
- 9 Montague**  
- Mills Gorman Architects
- 10 Victoria**  
- Finnis Architects
- 11 Ruskin Elwood**  
- HIP V. HYPE
- 12 Adela Apartments**  
- Jost Architects
- 13 Parks Victoria Albert Park Depot and Office**  
- Harris and White with Archier
- 14 Victorian Pride Centre**  
- Brearley Architects & Urbanists, and Grant Amon Architects
- 15 Stokehouse**  
- Van Haandel Group
- 16 St Huberts**  
- Robson Rak Architecture



# DESIGN & DEVELOPMENT AWARDS 2022



## For more information

☎ 03 9209 6243

✉ [designawards@portphillip.vic.gov.au](mailto:designawards@portphillip.vic.gov.au)

---

If you require a large print version  
please phone ASSIST 03 9209 6777

---

## Language assistance

廣東話 9679 9810    Русский 9679 9813

普通話 9679 9858    Polska 9679 9812

Ελληνικά 9679 9811    Other 9679 9814

---

**National**

**Relay**

**Service**

If you are deaf or have a hearing or speech impairment, you can phone us through the National Relay Service (NRS):

- TTY users, dial **133677**, then ask for **03 9209 6777**
- Voice Relay users, phone **1300 555 727**, then ask for **03 9209 6777**

🌐 [www.relayservice.gov.au](http://www.relayservice.gov.au)