

## Middle Park Bowls Club

## Budget Request for \$2.5 m in 2020/2021

Dear David

Following our recent discussions, I have documented below Middle Park Bowls Club's request for support from City of Port Phillip at the next budget meeting. On behalf of the club, I would appreciate guidance regarding this request and direction about the appropriate next steps to progress this important work.

We have concluded that as a fully integrated development it is not feasible to parcel the works in activities as defined by the funding streams. Accordingly, our budget request to Council is \$2.5m in 2020/2021 for the development as a whole, offset by components that may attract separate funding such as Female friendly facilities, Environmental Sustainability Design etc.

**Vital asset to the community**

Middle Park Bowls Club is recognised as a community hub within the City of Port Phillip. The club provides a range of benefits to the community, including the following:

- Summer Night Lights on Friday evenings. These events attract many families and children. Free food trucks and music are provided. We are regularly attracting 300 guests with strong attendance by women of all ages.
- Family days on most major Public Holidays – open to all at no cost
- Regular hosting of a disabled bowls group, with 8 regular participants
- Bowling with Babies – a Bowls Victoria initiative to encourage young parents (especially mums) to participate
- University of the Third Age (U3A) weekly recorder group with 12 members – no cost to the group
- U3A program for 14 novice bowlers – commenced in 2019 and will continue in 2020 due to its success and popularity
- Victorian Race Walkers Club, a highly successful athletics group, sub-leases the club's facilities at a discounted rate attended by 60 walkers weekly during the athletics season
- Hosting of a large number of community events, wakes, celebrations and involvement beyond the bowling community
- Free use of the club's facilities for a range of local fund raisers and charities, including Civic Kindergarten, Free the Bears, Friends of Suai, Bushfire Relief, Australian Egypt Fund, Mayibue Fundraiser and others.

In summary, the club has successfully engaged with the local community and is now recognised as the venue of choice for many locals and visitors. All these initiatives facilitate active participation at a level fitting a persons' mobility and capability. Residents and ratepayers of the City of Port Phillip are strong beneficiaries of the club's facilities, with little or no financial impost.

**Urgent need for capital development**

The club's current facilities are dated and not fit for purpose. It must better cater for the increasing number of children and people with impaired mobility who use the venue.

The club also has a target to double its current female participation (currently approximately 20%). Current facilities do not adequately cater for females; application of universal design principles will allow for continued growth in local community events and activities conducted at the club in line with changing community expectations.

Increased numbers in toilet facilities and locker rooms will improve the attractiveness of the club to young mothers. We estimate that forty percent of our weekly visitors of 400 people are young single women and mothers with young children, the majority on Fridays and weekends.

The club currently has 20 eligible female pennant bowlers and 90 men. A drive to engage more players has been promoted through U3A and the current group has an active group of over 50 % women. This will enable the club to field an additional Tuesday pennant side next season with potentially 6 new female players.

Whilst the female toilets in the main pavilion are in excellent condition, there are only 3 toilet cubicles. The bathroom area is also small and does not allow for high traffic during busy times at the club. On event days, the bathroom area is often full of women waiting to use the toilet area or simply to use wash basins. There is no facility in this area to change and to shower. This means that women at the club cannot shower after pennant bowls or club games.

The women's locker room is situated away from toilets at the back of the club and only provides an area to change and has no toilets or shower. The cleaners' room is only accessible from the ladies change rooms which is unacceptable. The women's locker room is an unattractive area and the women's toilet area is too small. The female locker room is old and very basic and not in line with promoting women and girls in sport. The change rooms are poorly located, and many visiting bowlers do not know they are there. The current arrangements will not cater for any increased demand flowing from a more visible location. It reinforces the old idea that women and girls are not promoted in sport and this is in opposition to the club's promotion of gender equality.

Overall the facilities do not provide for the number of women now using the club.

The club is always striving to promote bowling as a sport for all genders and ages and the female facilities do not support our drive to show women that they are valued members of the community. The present facilities would not support an increase in women participating in bowling.

The club is seeking funding to upgrade all the amenities, including contemporary family friendly facilities that will assist in promoting women and girls into bowling. This cannot be achieved in an ad hoc manner without resolving existing poor functionality. Over the last three years the club has prepared an overall plan to develop these facilities with a long-term vision in place. The club has worked with a local architect to draw up a conceptual design to upgrade /redevelop the club. The concept currently under consideration for a planning permit resolves existing poor functionality and integrates development, rather than continuing past practice of ad hoc works driven by limited funding and limited effectiveness.

The funding would be used to incorporate female facilities in line with the overall club redevelopment. The club is seeking funds to provide for women and girls within an attractive modern facility. To do this the club requires funding to:

- relocate the bar area to the centre of the building
- relocate the kitchen to the services area adjacent to the toilets and change facilities
- build new toilets and change facilities in area vacated by bar

## **Budget**

Based on current information and the latest Quantity Surveyor estimates the direct construction costs are likely to be \$3.0m. We will also be making provision for design and contract documentation costs of a further \$300k. The stand-alone QS for toilets and change facilities is

approximately \$230,000, however significant ancillary costs would be required to create the space necessary. We are continually reviewing the QS and alternative ways to deliver the project.

It is important that these capital works are executed in one stage, in as short a timeframe as possible, to minimise disruption to the community and many users of the facilities. This will be possible with the budget allocation below:

<b>Income source</b>	<b>\$</b>
City of Port Phillip	2,500,000
Local Sports Infrastructure Fund: Female Friendly Facilities Stream or Community Facilities Stream	500,000
Middle Park Bowls Club contribution	300,000
<b>Total</b>	<b>3,300,000</b>

The club will also be monitoring the feasibility of the subsidised loan scheme to finance the Bowls Club contribution. At this stage it is unclear whether to seek funding under the Female Friendly Facilities Stream or Strategic facilities Stream.

Our preferred position is to complete the total refurbishment of the facilities as one stage. This can be achieved if funding of \$500,000 is awarded under the Local Sports Infrastructure Fund and balance from City of Port Phillip and Middle Park Bowls Club. The current costing of the total project is \$3.3 m. This would require a budget request to City of Port Phillip of \$2.5m in the 2020/2021 financial year and/or 2021/2022.

The club is determined to better serve the local community, ensuring inclusivity and access for all, and hopes that the City of Port Phillip will support these efforts.

I welcome the opportunity for further discussion regarding this request and invite Councillors to tour the facilities and view detailed plans for capital development.

Yours sincerely



Board Secretary



## Albert Park Bowls Club Inc

St. Vincent Gardens, Albert Park 3206

ABN: 42 607 240 123 CAVN: A0008098H

email: apbowls@bigpond.net.au web: www.albertparkbowlsclub.com.au tel: (03) 9690 3592  
correspondence: PO Box 159, Albert Park, VIC 3206

19<sup>th</sup> December 2019

Mr Anthony Traill  
Manager Open Space and Recreation Services  
Private Bag No. 3  
P O St Kilda Victoria. 3182,  
DX 35706 Balaclava. Vic.



Copy:  
Mayor Bernadene Voss  
Councillor Andrew Bond  
**Mr Peter Smith CEO**  
Mr David Nankervis

Good Morning Anthony,

### Re. Albert Park Bowls Club Clubhouse Remediation and Redevelopment

You will find attached a submission from our club detailing matters, the subject of many discussions over recent years, relating to the remediation and redevelopment of our clubhouse building to address current shortcomings and to improve future amenity and longevity for our members, the local community and the schools who use this facility.

The project comprises three Phases:

- **Phase 1: Facilities Remediation**  
Creation of female-only change rooms and remediation of current toilet facilities.
- **Phase 2: Building Front Renovation**  
Installation of portico and sliding doors.
- **Phase 3: Building Interior Renovation**  
Replacement of floor, cabinetry, appliances and equipment.

The Club seeks the Council's support in planning, permitting and approvals for all three Phases and direct financial contribution to the work in Phase 1. We note your statements of willingness to financially assist the club with remediation of our toilet and change room facilities as relayed to us:

- during a meeting at Council chambers between Mayor Gross, Mr Anthony Traill and the writer in May 2019

- in a letter from the Acting Mayor Cr Louise Crawford dated 24<sup>th</sup> July 2019

Whilst the remediation and development work and consequential relocation of our secretary's office in Phase 1 will cost us an estimated \$210,000 we seek a Council contribution of \$150,000 as relayed to Mayor Gross and Anthony Traill at our May meeting.

Your early advice regarding the matters contained in our submission would be most appreciated.

Yours faithfully,

A large black rectangular redaction box covering the signature of the sender.

President  
Albert Park Bowls Club



# Albert Park Bowls Club

**CLUBHOUSE REDEVELOPMENT SUBMISSION  
TO PORT PHILLIP COUNCIL**

**December 2019**



# Albert Park Bowls Club Clubhouse Redevelopment Proposal

The Board of the Albert Park Bowls Club is planning to redevelop the clubhouse building to address current shortcomings and to improve future amenity and longevity.

The project comprises three Phases:

## ***Phase 1: Facilities Remediation***

Creation of female-only change rooms and remediation of current toilet facilities.

## ***Phase 2: Building Front Renovation***

Installation of portico and sliding doors.

## ***Phase 3: Building Interior Renovation***

Replacement of floor, cabinetry, appliances and equipment.

The Club seeks the Council's support in planning, permitting and approvals for all three Phases and direct financial contribution to the work in Phase 1.



## Albert Park Bowls Club Significant Council Support to Date

We appreciate your assistance in facilitating the installation of our new green in August this year at a cost to the club of \$200,000.

We appreciate your agreement to draw up a new lease that reflects the above investment in a green that will last more than 15 years as well as our proposed building spend that will extend the longevity of the facility by at least 30 years.

We appreciate your support through the recent installation of lockable gates at all four entrances to the club grounds and your continuing dialogue on how to further improve security and safety around the club.





## Albert Park Bowls Club Council Support Requested for this Project

To facilitate the redevelopment project, we seek the Council's support through:

- Continuing to work in a timely fashion towards a renewed lease for the building that reflects both the Club's investment to date and its further investment in completing each of the project phases.
- Appointing an Architect / Project Supervisor to oversee the preparation of detailed project plans to be submitted to Council for all 3 Phases of the project. The Club has the experience and resources to provide project management services, but we seek Council's involvement in, and endorsement of, the various plans requiring approval.
- Contributing \$150,000 toward the cost of Phase 1 of the project, which focuses primarily on installing female-only change rooms and associated upgrades to toilet facilities. More detail on Phase 1 follows.
- Approval of a small extension to the current building required in Phase 1, driven by the need to relocate the current club office to make room for the female-only change rooms.



## Albert Park Bowls Club Requested Changes in Renewed Lease

We seek the following adjustments to the terms of a renewed lease:

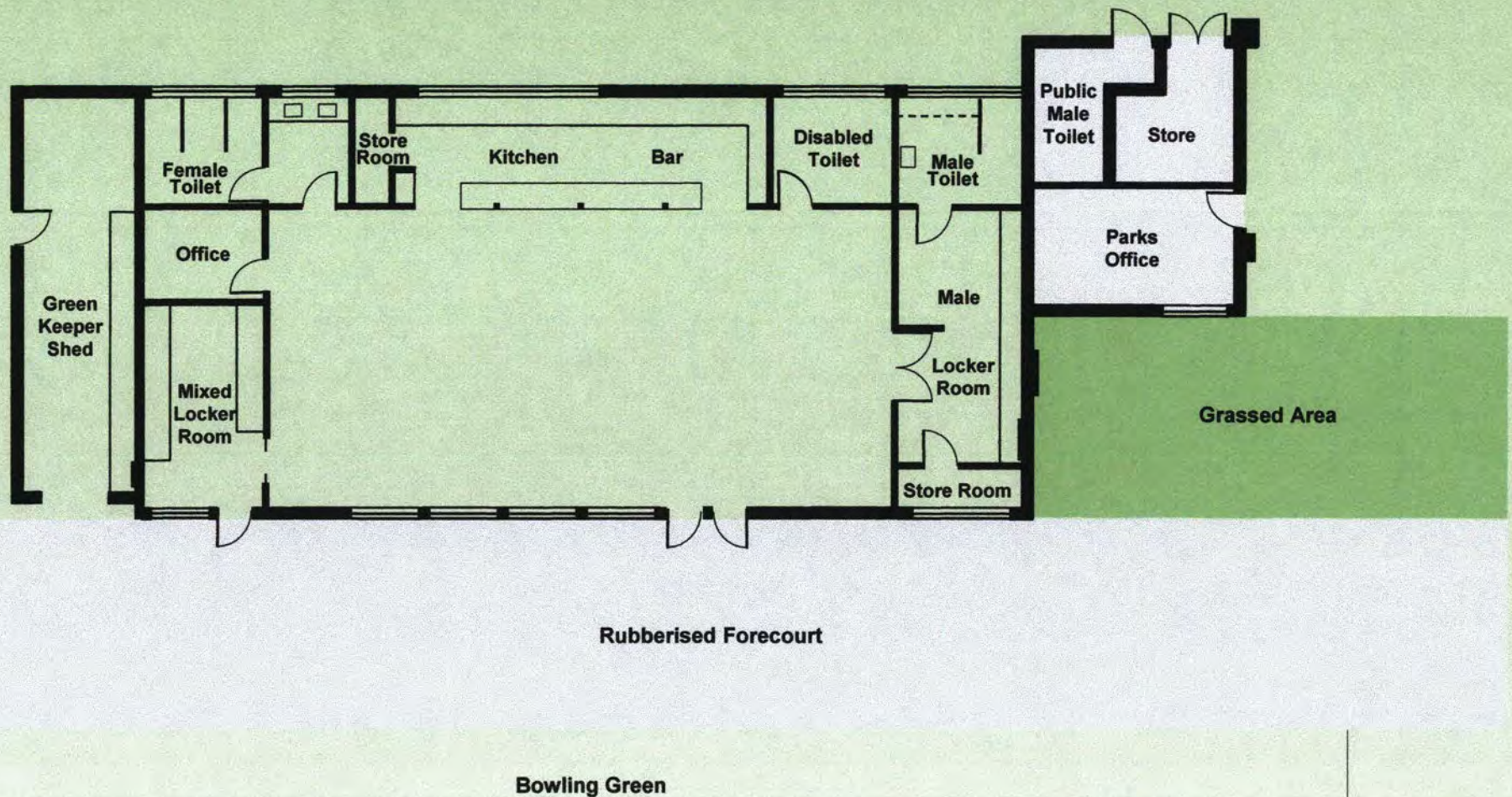
- A term of 30 years, which will reflect the Club's significant past, present and future investment in facilities and our on-going commitment to community support and engagement.
- Noise restriction language that reflects what is contained in our liquor licence (e.g. noise to be limited to reasonable levels at relevant times).
- Allow for installation of some unobtrusive permanent signage (e.g. scoreboards).
- Allow for some non-bowls related activities to be held in the clubhouse, which may be fundraising or community service in nature (an appropriate description of allowable activities to be agreed).



# Albert Park Bowls Club Redevelopment Project – Overview

The Redevelopment Project involves a series of changes to the current Clubhouse Layout

## CURRENT CLUBHOUSE LAYOUT





## Albert Park Bowls Club

# Current Female and Male Facility Shortcomings

- Our Ladies' and Men's change rooms and toilets are well below standard.
- We lead the way with female members, but are unable to provide them with a secure, female-only change room and there is no direct connection to the female toilets.
- The current female-accessible facility opens directly onto the forecourt and is a general thoroughfare into and out of the club.
- The external window gives a view directly into this change room.
- There is also not enough space for the increasing number of female members and the growing number of female students using the facility.
- Our men's toilet also needs remediation work as it has an unhealthy smell, potentially a leak identified in a recent Council audit report.<sup>1</sup> Asbestos also exists in the men's toilet, locker room, switchboard (located in the men's change room) and building eaves.<sup>2</sup>
- Our builder estimated costs for this work at \$190,000 and we seek confirmation of your financial support as relayed to us at various meetings over several years in order to rectify and upgrade our Ladies and Men's toilet and change room facilities.



## Albert Park Bowls Club 3 Phase Redevelopment Project

Remediating our female and male facilities is the main focus of the first phase in our overall three phase redevelopment project:

### *Phase 1: Facilities Remediation*

Creation of female-only change rooms and remediation of current toilet facilities.

### *Phase 2: Building Front Renovation*

Installation of portico and sliding doors.

### *Phase 3: Building Interior Renovation*

Replacement of floor, cabinetry, appliances and equipment.

The following material outlines the work envisaged in these phases and provides detail on Phase 1, in which the Club is seeking Council financial support.



# Albert Park Bowls Club Redevelopment Project – 3 Phases

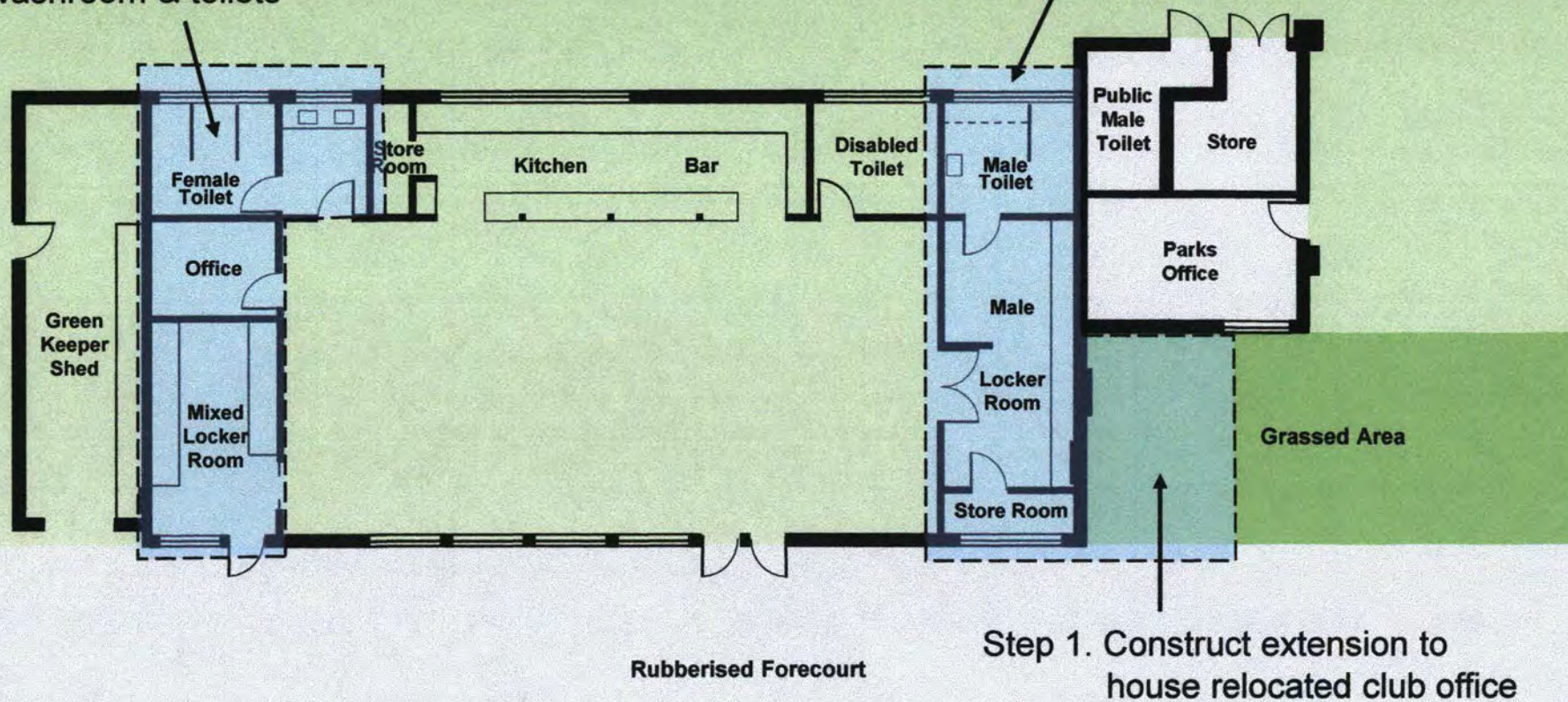
## PHASE 1

Step 2. Establish female-only changerooms:

- Relocate club office
- Reconfigure locker room, washroom & toilets

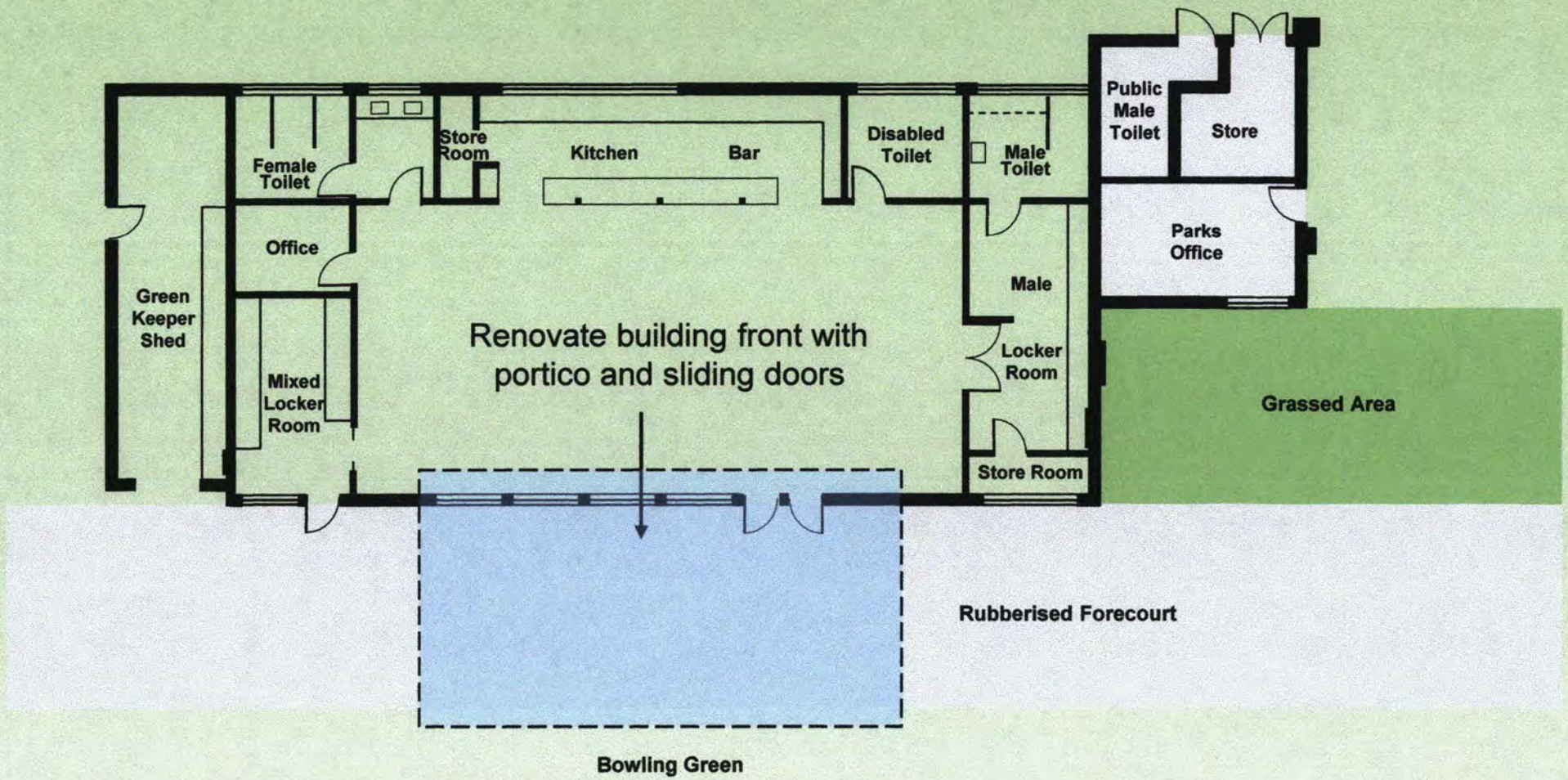
Step 3. Adjustments to male facilities:

- Remediate health and asbestos risks
- Reconfigure locker room to accommodate men currently using mixed locker room





# Albert Park Bowls Club Redevelopment Project – Phases 2

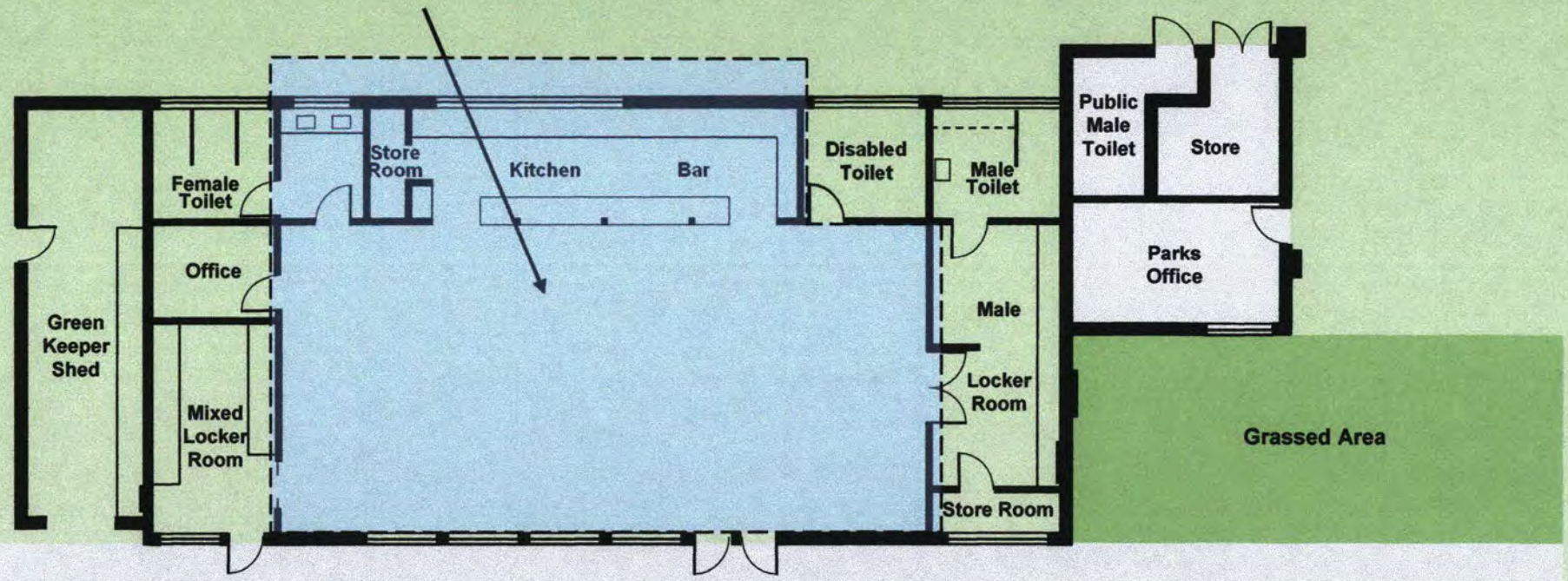




# Albert Park Bowls Club

## Redevelopment Project – Phases 3

Renovate floor, kitchen & bar areas



Rubberised Forecourt

Bowling Green





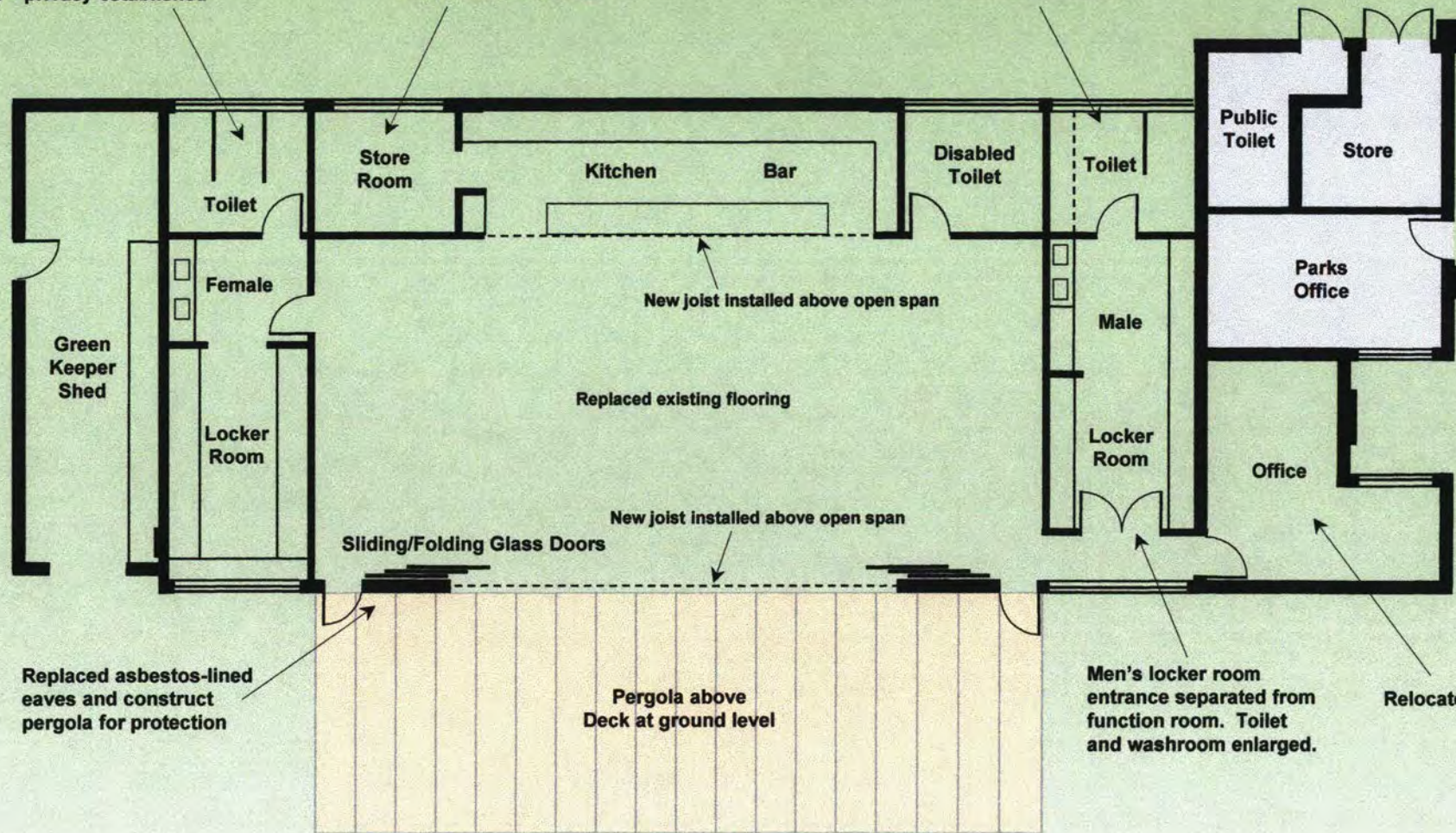
# Albert Park Bowls Club Redevelopment Project – When Completed

## NEW CLUBHOUSE LAYOUT

Female toilet off washroom and locker room separated from function room – privacy established

Store room moved to be next to kitchen

Removed asbestos backing to urinal



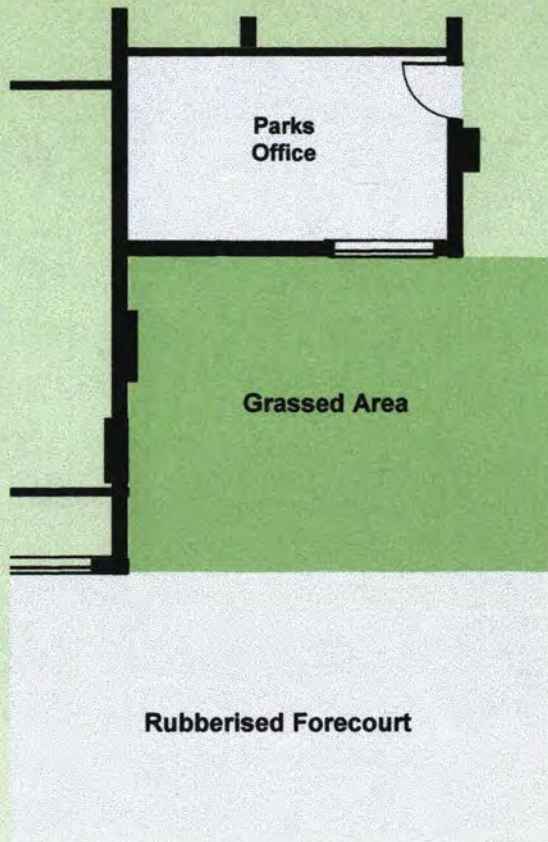


# Albert Park Bowls Club Redevelopment Project – Phase 1 in Detail

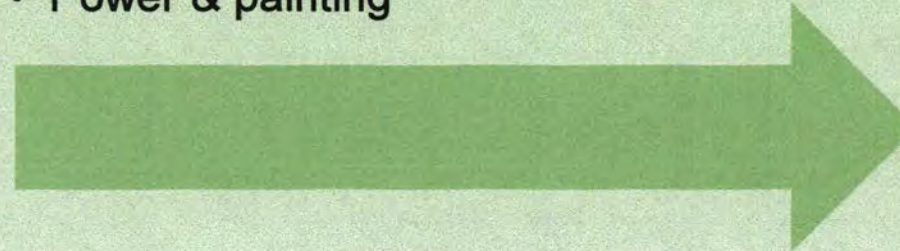
## FACILITIES REMEDIATION

### Step 1

#### Present

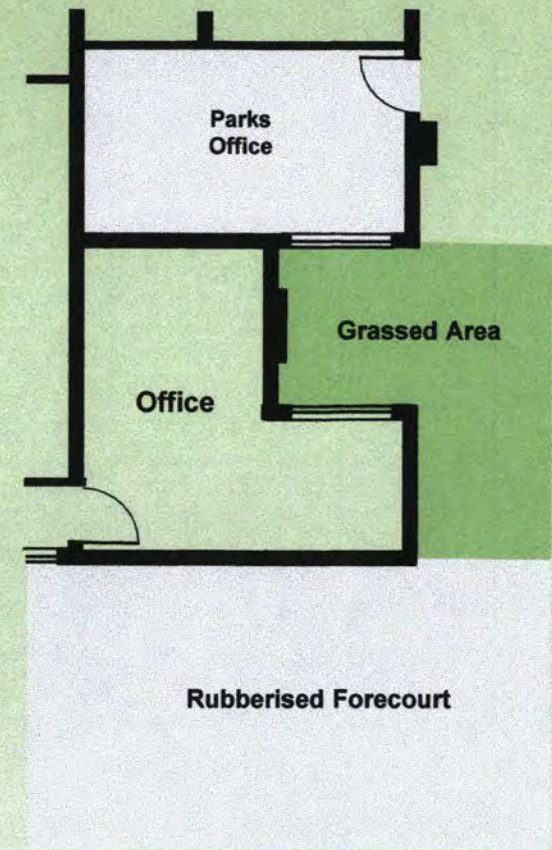


- Construct extension to match design of opposite end of building
- Relocate power board to exterior of new extension
- Install door through to access corridor (see Step 3 for adjacent design elements)
- Power & painting



\$30,000 +  
Winter 2020

#### Future

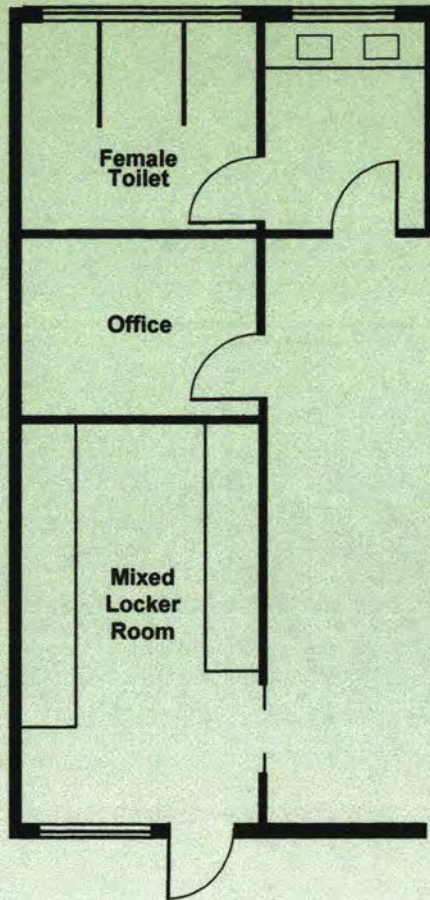




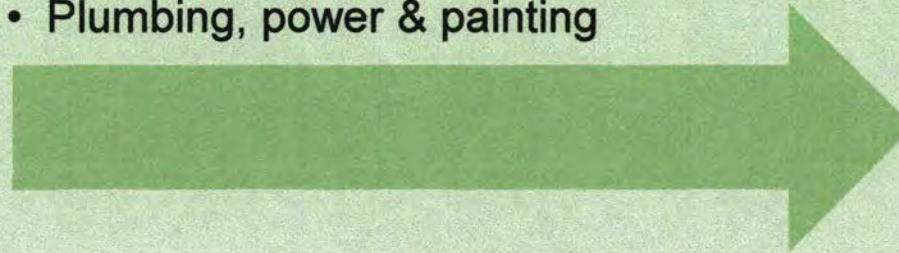
# Albert Park Bowls Club Redevelopment Project – Phase 1 in Detail

## Step 2

### Present

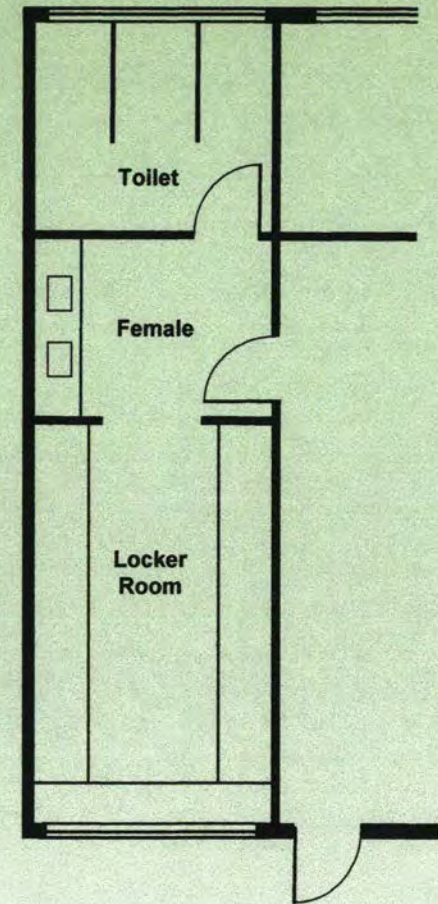


- Relocate office to new extension
- Close existing entries to mixed locker room
- Move external door to access main room
- Move washroom to previous office location
- Install door from main room into washroom
- Install doors from washroom into locker room & toilets
- Plumbing, power & painting



\$110,000  
Winter 2020

### Future

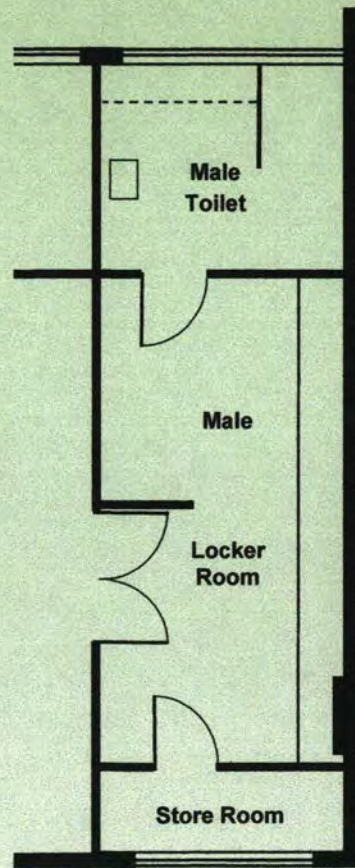




# Albert Park Bowls Club Redevelopment Project – Phase 1 in Detail

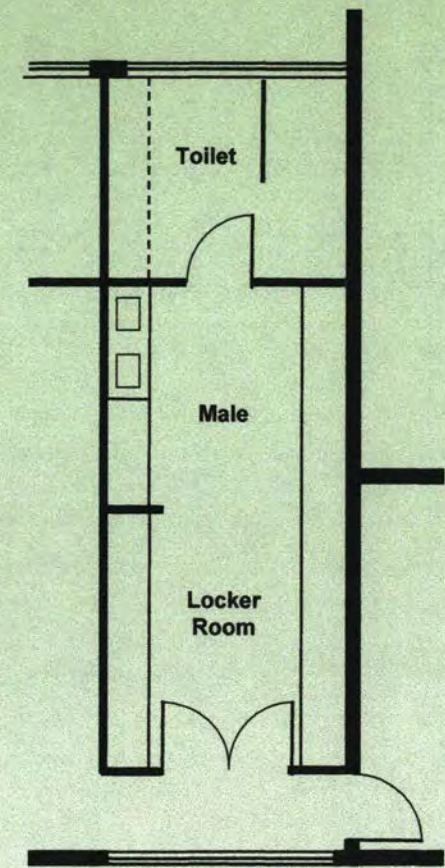
## Step 3

### Present



- Remediate health & asbestos issues in toilet area
- Relocate urinal
- Relocate store room to kitchen area
- Create corridor for access to office
- Move double entry doors to corridor
- Move sink to outside of toilet area
- Move door into toilet area
- Increase locker space to accommodate male players from mixed locker room
- Plumbing, power & painting

### Future



\$80,000  
Winter 2020



Albert Park Bowls Club

## Redevelopment Project – Phase 1 in Detail

### **PHASE 1 FACILITIES REMEDIATION BUDGET SUMMARY**

Step 1	Extension for office	\$ 30,000
Step 2	Female Facilities	110,000
Step 3	Male Facilities	80,000
<b>Total</b>		<b>\$220,000</b>
Requested Council Contribution		\$150,000



Albert Park Bowls Club

## Redevelopment Project – Phase 1 in Context

### TOTAL PROJECT BUDGET SUMMARY

Phase 1	Facilities Remediation	\$ 190,000
	plus consequential office relocation	30,000
Phase 2	Building Front Upgrade	130,000
Phase 3	Main Room Amenity	170,000
	Contingency	<u>50,000</u>
<b>Total</b>		<b>\$570,000</b>



## Summary of Assistance Requested

- Review and renew our lease documents now that green works completed and address the few issues we have detailed in our submission.
- Confirm your contribution to our Clubrooms remediation, particularly the removal of all asbestos and the upgrade of the substandard toilets and change rooms. (estimate \$190,000 plus building extension \$30,000)

We have been in discussions with the State Government regarding amenity improvements and the club will find a way to fund the balance of our renovation costs over time.

- Appoint a building works Project Supervisor/Architect to commence liaison with club management regarding our plans.
- Agree to the extension of the current building to accommodate a relocated club office.



# ADDENDUM

## Club History

- Albert Park Bowls Club was formed in 1873 as the South Melbourne Bowling Club, so in 2023 we will mark the 150<sup>th</sup> anniversary of the founding of the Club.
- St Vincent Gardens were originally designed to include a bowling green, although funding was not included. Our founding members raised the funds personally to establish the Club and the green, under the auspices of the South Melbourne Council.
- In 1929 the name was changed to the Albert Park Bowling Club and in 1945 we formed a relationship with the Victorian Railways Institute, leading to “VRI” being added to our name.
- In 2011 the Club took on its current name, the Albert Park Bowls Club.





## Club History. (cont)

- Being one of the first established bowls clubs in 1873, it also boasts being one of the first to establish a **Ladies Club**, in 1899.
- For many years the two Clubs operated separately, but have subsequently amalgamated.
- The Club no longer supports separate Men's tournaments and Club Championships, and pennant teams are fully integrated including both male and female members at all levels.



## Our Members

- Our members come primarily from the City of Port Phillip with current numbers at 152 which has grown from 120 over the last 10 years.
- Our Club's current profile compared to bowls average in 2016 was as follows:

	Albert Park	Average Club
Membership	152	337
Full Members	99	94
Pennant Players	81	59
Males/Females	1.17	2.0
Pensioners	40%	?
Working Members	20%	?
Self Funded Retirees	40%	?

Our recent membership intake included 27 females and 22 males



## Our Members (cont)

- Our membership data reflects
  - that we have just one green (relatively lower than average total membership)
  - are primarily a bowlers' club with a Pennant playing profile and
  - a larger than average female participation rate compared with other clubs,
  - engagement with our extended community in many different community activities.
- Our Club is non-discriminatory welcoming community members from all walks of life and a social meeting place for local families and children. We keep our membership fees low in order to include a broader cross-section of the community.
- Besides a significant pensioner cohort, the club has among its members representatives from many ethnicities and backgrounds including many migrant members as well as members of the LGBTQIA community



## Our Community Outreach

- The Club prides itself in our community outreach allowing hundreds of local residents to casually utilize our green without charge.
- We also provide volunteer services to many groups including:
  - Bowling classes for 75 Albert Park Primary School students
  - Bowling classes for 304 Albert Park College students which together requires the provision of 82 coaches.
  - Come-and-try bowling for the community on Sundays
  - A fund raising bowls day supporting Father Bob's work
  - Regular bowls days for Edith Parry House residents
  - Visits by residents of Emerald Hill Residences
  - Bridge lessons have been provided for the local community



## Historic Financial Capability

- During our long history the Club has managed to meet all our operating financial obligations using volunteer workers.
- However there are many restrictions imposed on our operations arising as a result of operating in a public park on a single nine rink green, which involve our liquor licence, the lack of lighting on the green, and not being permitted to have music outside the clubhouse.
- This restricts our ability to hold corporate and barefoot bowls days which other clubs in the area use to raise much of their revenue.
- As a result our bar turns over approximately \$50,000pa whereas other nearby clubs turnover well over \$1,000,000pa.
- In view of these restrictions on operations we submit that some asset replacement assistance is warranted and we appreciate council's desire to assist with our toilet and change room remediation.



# Progress To Date With Council.

## Green Replacement

- Engaged with council officers starting late March 2017
- Sent RFP plan to council in April 2017
- Issued RFPs in May 2017
  - Berry Bowling Systems
  - Tiger Turf
  - Bio Bowls/Sportcrete (Greengauge)
- Received and evaluated proposals June 2017
- Met with A Traill August 2017
  - Plan to include Council Contribution in 2018/19 budget discussed
  - July 2018 suggested as earliest funding assistance.
  - Green replaced August 2019

Provided Budget Submission on both matters to council for consideration in 2018/19 budget in April 2018 as requested by council officers

- Attended council budget meeting and made submission in June 2018 at that meeting
- Council declined to provide any near term financial assistance in these matters to the club in letter dated July 21, 2018
- Met with Mayor Gross and Anthony Traill 13<sup>th</sup> May 2019 and received assurances re financial assistance.

## Club Renovation

- Initial discussions with Council officers in late 2016
- Sent proposal to Councilors in January of 2017
- Engaged with Council officers starting late March 2017
- Met with A Traill in August 2017
  - Discussed potential appointment of project manager in late 3Q/early4Q 2017
  - Council to undertake further architectural and heritage studies as precursor to framing 2018/19+ budget
- David Nankervis nominated as prime contact November 2017
  - Met with David Nankervis Nov 24<sup>th</sup> 2017
  - Met with David Nankervis and Karen Hayes on Feb 19<sup>th</sup> 2018

CBR-004

[REDACTED]

## Question to Council

**Meeting Date:** 26-02-2020

**Name:** [REDACTED]

**Address:** [REDACTED]

**Telephone:** [REDACTED]

**Email:** [REDACTED]

**Interest in the item:** Not Applicable

**Do you wish to:** ask a general question at Public Question Time

**Question to Council:** Power House Rugby Union Club at Albert Park plans to construct a new sports pavilion as the womens team get changed on the sideline and there are no toilets, shower facilities or shelter available for this winter sport. Our Rugby Club has raised \$700,000 and Sport & Recreation are providing \$300,000 towards the \$1.5 million cost. Parks Victoria have advised a planning permit will need to be applied for to CoPP. 1. CoPP provided \$100,000 to South Melbourne District Sports Club for their pavilion, what financial support is available for this project? 2. Is there a charge for a planning permit for a not for profit sports club? Will CoPP make us pay for the planning permit application?

**REQUEST FOR CITY OF PORT PHILLIP CAPITAL WORKS FUNDING - 2020/2021****1. Project Name**

The Phoenix Centre (Elwood College Community Sport and Arts Centre) - outdoor courts extension, roof and lighting project

**2. Capital funding amount requested**

This proposal is for a \$500,000 City of Port Phillip contribution with the aim of applying for matching funding from Sport and Recreation Victoria.

**3. Why this project needed**

The Phoenix Centre (Elwood College Community Sport and Arts Centre) Feasibility Study and Business Plan was commissioned by Elwood College (a Victorian State Government School) as part of its school master-planning approach but reflects a broad community perspective in the need for College's facilities and grounds to fulfil an important open space, sports, arts and education role for the Elwood and surrounding community.

The feasibility study identifies that re-development of current Phoenix Theatre and Gym (old indoor basketball court) incorporating the extension of the outdoor courts to be netball compliant while being multi-line marked for a range of sports, development of a roof and lighting over the outdoor courts should be undertaken as a priority and would be stage one of the overall Phoenix Centre development.

The courts extension to be full sized netball sized but multi-sport marked courts, roof and lighting over the outdoor courts at Elwood College (part of the Phoenix Centre Sport and Arts Centre redevelopment project) is required because there is a shortage of indoor and/or all weather lit courts in City of Port Phillip (CoPP) and the region surrounding Elwood College and community demand for these facilities and associated activities, is large and growing.

In particular there is a critical shortage in provision for girls' sport and netball. There are currently fewer than 15 indoor courts in City of Port Phillip that are used for competition purposes and most of these are part of the Melbourne Sports and Aquatic Centre and the Albert Park Indoor Sports Centre which draw players from much further afield than just CoPP for local, regional and state competitions. The availability of court space for basketball is greater than for netball and other indoor sports, however overall provision across all indoor sports is below required levels. Twenty, mostly single outdoor courts were identified within City of Port Phillip and only two of these are lit.

Review of existing CoPP venues found that most were at or are close to capacity in peak times.

Within a 5km radius of Elwood College 11 indoor courts were identified that are able to be booked for general community use, but all are at or close to capacity in peak times. There are 25 outdoor courts within a 5km radius, the majority are in schools, 12 are unavailable for booking and the rest are almost fully booked. As none are lit, their use is restricted to daylight hours only.

All of the 29 local indoor sports facility groups, clubs and associations that participated in consultation for the Phoenix Centre feasibility project (2018) representing an estimated 12,500 players identified an inability to gain access to court space as a significant challenge and, that lack of court space had in the past and was into the future, impeding their ability to meet local demand for sport.

The Phoenix Centre Feasibility Study and Business Plan found that demand for increased participation cannot be accommodated without groups, clubs and associations gaining access to more courts.

There is not sufficient court-time, nor sufficient competition standard compliant courts available in City of Port Phillip or the surrounding areas for accommodate association/club competition and/or training needs.

With high demand for competition purposes, access to courts for training is even more difficult with many clubs running training for a number of teams on one court at one time.

Some clubs reported that they are unable to gain any training times meaning that their teams do not train.



Most City of Port Phillip netball and volleyball participants and a high percentage of basketballers are playing in venues and competitions outside of City of Port Phillip because local associations cannot meet demand or provide adequate sporting pathways.

With a projected local participation numbers projected to grow to over 5,000 players by 2041, the shortfall in court space in CoPP is estimated to be between 3 courts now and 15 courts by 2041 if no additional courts are built.

Development of a competition quality lit roof over the Elwood College's Phoenix Centre outdoor courts would provide an immediate increase access to quality court space that will immediate increase local sports and particularly girls netball capacity.

#### **4. This project addresses an identified need/ gap in community sport and physical activity facilities in City of Port Phillip and addresses a number of key City of Port Phillip strategic objectives**

The decision to make the courts netball compliant and develop the all-weather roof that includes competition compliant lighting to cover two plexipave outdoor courts as part of the Phoenix Centre (Elwood College's Sport and Arts Centre) redevelopment has been evidence driven through the Elwood College Phoenix Centre Feasibility Study September, 2018 and strongly supported by a number of local and regional plans and, state sporting body strategic planning.

Recent strategic plans developed by Netball Victoria and Basketball Victoria have identified that based on available useable court hours, one sports court can accommodate between 300 – 500 people per week. This is based on an average use per person of 2.8 hours per week (training and competition).

Based on the predicted population growth and using local club/organisation current membership numbers, the likely CoPP participation in indoor/covered sport court-based sports could increase from just over 3,200 people to around 5,000 by 2041. This level of increased participation though can only occur if the sports groups consulted for this project can gain access to additional court space within the CoPP.

Netball Victoria and Basketball Victoria's recently launched strategic facility plans each identified a significant shortfall in court provision in City of Port Phillip. Their strategies identified that based on available useable court hours, one sports court can accommodate between 300 – 500 people per week. This is based on an average use per person of 2.8 hours per week (training and competition). Based on these ratios, and taking into account only netball and basketball, CoPP has an immediate shortfall in indoor and/or covered and lit courts of between 0 and 5 courts which will increase to between 3 and 10 courts by 2041. When other indoor sports such as futsal, volleyball and badminton are taken into consideration, the shortfall only increased.

Discussions with the Netball, Basketball and Volleyball Victoria (state sporting associations) indicated that in excess of 3,272 City of Port Phillip residents were registered and participate in these indoor sporting activities. A further 50 local futsal players were identified but not affiliated with a peak sporting association.

Associations/clubs consulted for the Phoenix Centre feasibility study put their combined total membership numbers at approximately 6,914.

Consultation with each of these key indoor sports facility users indicated a significant lack of sports courts to meet current and future demand.

The development of netball compliant courts and a roof with competition compliant lighting to be built over the Elwood College outdoor courts will provide local sporting organisations and particularly local netball groups that are currently poorly catered for, with an all-weather, competition compliant facility. It will expand the court options available to all local indoor sporting groups and, it will also provide an open and accessible venue for local community casual use. The development would:

- Provide capacity for increased participation access for the currently active 4,087-6,914 local indoor sports participants and those on waiting lists that cannot get access to programs.
- Enable increased and improved female participation in sport
- Support establishment of a local netball club (currently all locals have to leave Elwood to participate)
- Access for people with disabilities to specialised/tailored programs
- Allow for increased pathway opportunities by increasing access to 'grass roots' programs through to the elite programs
- Build local economic activity

A review of City of Port Phillip's social and economic development strategies and plans, Elwood College's strategic development plans, relevant State Sporting Association strategic plans and other regional strategies was undertaken as part of the feasibility study to ensure that any potential court development was aligned to broader planning priorities. Those with particular relevance to community sporting, health, wellbeing and economic development infrastructure were:

1. Elwood College Strategic Plan (draft 2018)
2. Elwood College Redevelopment Masterplan Brief
3. City of Port Phillip Sport and Recreation Strategy 2015 -2024
4. City of Port Phillip Council Plan 2017-27 (integrating the Municipal Public Health and Wellbeing Plan.
5. Creative and Prosperous City Strategy 2018-2022 (Draft)
6. Family Youth & Children Strategy 2014 - 2019 Creative State -Victoria's Creative Industry Strategy 2016 – 2020
7. Active Victoria – A strategic framework for sport and recreation in Victoria 2017-2021
8. Stonnington Indoor Sports Stadium – stadium operations report September 2017
9. Victoria and Basketball Victoria State Facilities Plans
10. Glen Eira Leisure Strategy
11. Bayside Recreation Strategy 2013 - 2022

All of these documents articulate a vision, goals, recommendations and/or research that supports or are supported by the Phoenix Centre (Elwood College's Community Sport and Arts Centre) - outdoor courts roof and lighting project.

#### **5. This project will lead to an increase in sport and physical activity participation**

Phoenix Centre (Elwood College's Community Sport and Arts Centre) - outdoor courts extension, roof and lighting project will deliver a broad range of participation, multi-use social, health and wellbeing and economic benefits.

It will an integral part of developing the Phoenix Centre as an active sports, recreation, arts and community hub and focal point for the provision of services through sport, health and wellbeing, arts, education and training.

Research and consultation findings from the Phoenix Centre Feasibility Study and Business Plan clearly indicate that the development of covered and lit outdoor sports courts are required to maintain and increase participation in a range of sporting activities. Discussions with the current and potential future tenant clubs and the review of current facility provision indicates that there is a significant under supply of sports courts in the City of Port Phillip, the Elwood area and the surround area to support the current and future demands for sports court-based sporting activities such as basketball, netball, futsal and volleyball. All current users of Elwood Colleges existing courts require access to additional courts, but also improved, all-weather and lit courts to meet the current demands of their sports. This is particularly the case for local netball where lack of facilities means that local girls (and boys) need to play with clubs and associations outside the municipality. In particular, it has been identified that many associations and clubs are having to turn teams and players away, organise training times outside of appropriate hours for junior players and have multiple teams share courts for training. In a number of cases, teams cannot train because they cannot get access to court time.

All of the 29 local sports-court based groups, clubs and associations representing an estimated close to 7,000 players consulted for the Phoenix Centre feasibility study (that informs this project) identified an inability to gain access to court space as a significant challenge and that lack of court space had in the past and was into the future, impeding their ability to meet local demand for sport. All of these groups indicated that access to a minimum of four additional would address the lack of courts to meet immediate demand.

Discussion with both local and State Associations indicates that growth in sports court-based sport participation is currently restricted by the lack of facilities. Based on City of Port Phillip's demographic profile and using both state participation data and information provided by the sports state sporting associations it is anticipated that the already high participation will increase significantly if an additional and/or improved all weather and lit sports courts were available in the area. It is estimated that participation would increase by 11.4% by 2021, a further 20.2% by 2031 and a further 16% by 2041.

Discussion with State Sporting Associations such as Basketball and Netball Victoria indicates that the proposed facilities will ensure that participants and spectators can enjoy access to a range of competition levels and pathways for their sporting ambitions.

Development of a competition compliant undercover and lit outdoor court facility will:

- Make use of the facility during the traditional indoor peak times thereby maximising the use of the facility. Currently outdoor courts can only be used in daylight hours and not functional for a range of sports and activities in wet weather or extreme heat.
- Enable local netballers to have a home base and provide local residents with the potential to establish/attend Netball in Elwood.
- Provide a pathway of participation for City of Port Phillip/Elwood residents and the wider region
- Provide a sense of pride for local residents
- Maximise use of an Education Department property for local community use

The Phoenix Centre feasibility study and business plan identified that Caulfield South Netball Club is exploring opportunities to more closely align with Elwood College and City of Port Phillip to support local girls and women to have access to netball locally.

The club has recently voted to change its name to the Elwood Netball Club reflecting the base location of the majority of its members.

This project will enable a locally based club to evolve and provide a sport to address the issue of females of all ages generally having lower physical activity participation rates than males. It recognises that increasing physical activity levels for females is important for health and mental wellbeing.

While there is an opportunity for the Elwood outdoor courts, roof and lighting project to focus on the strong need for netball, there is also the opportunity for it to support casual, unprogrammed and/or less formal sport and recreation.

The outdoor courts will be open to public and providing they are not booked will be able to be used for a wide range of sports such as downball/handball and futsal.

**1.1. Current Participation Numbers (number per time period)**

Court Bookings: 130 participants per week (approximately 5200 participants per annum)

Casual Use: 50 participants per week (approximately 2500 participants per annum)

**1.2. Projected Participation Numbers (number per time period)**

Court Bookings: 600 participants per week (approximately 24,000 participants per annum)

Casual Use: 60 participants per week (approximately 3000 participants per annum)

## JAAG – Request for 2020-2021 budget

The Junction Area Action Group, also known as JAAG, was established in 2002 to protect the amenity of the area in St. Kilda east of St. Kilda Road bounded by St. Kilda Road, Alma Road, Chapel Street, and Queensway. JAAG has since extended its area of interest to the area west of St. Kilda Road bounded by St. Kilda Road, Fitzroy and Princes Streets and Alma Road. JAAG has over 350 members who are residents of the area or own businesses there. JAAG together with the City of Port Phillip (CoPP) has collaborated to improve the amenity of the area and create a stronger sense of community for everyone in the neighborhood.

JAAG would like to formally submit the following document as a request for enhancements in our local area to be included in the FY20/21 budget. A number of the requests are already known to the Council and were in the FY18/19 & FY19/20 budgets and have not yet been started or completed.

### Existing Requests:

Description	Approved FY18/19 Budget	Timing / status
Wellington St upgrade (continuation from previous budget) <ul style="list-style-type: none"> <li>Dandenong Rd/Wellington St upgrade</li> </ul>	450,000	<ul style="list-style-type: none"> <li>Per CoPP GM – Suzanne Becker - Pending approval from DoT</li> </ul>
The levelling/repair of the Lilydale topping walking paths in Alma Park West (see line marking below) as the surface has been badly broken up by trucks driving over it, weight it clearly was not designed to handle	TBA	<ul style="list-style-type: none"> <li>Approved budget allocated in FY18/19</li> <li>Works not started</li> </ul>
StKilda junction strategy: <ul style="list-style-type: none"> <li>Work on a Masterplan for St Kilda Junction with Department of Transport and all relevant State Government Agencies who have a stake holding in St Kilda Junction.</li> <li>Work with Department of Transport on DDA compliance of St Kilda Junction tram stop 131 (at Fitzroy St/St Kilda Rd intersection) and either removal of St Kilda Junction pedestrian underpass tram stop 30 and closure of tunnels to pedestrians or bring tram stop 30 up to DDA compliance.</li> <li>Work with Department of Transport to install a pedestrian crossing at grade from east to west on the north side of St Kilda Junction mirroring that of the south side pedestrian crossing from Wellington Street to Fitzroy Street.</li> </ul>	500,000	<ul style="list-style-type: none"> <li>\$500k Approved</li> </ul>

## New Requests:

- **Nelson St traffic and parking restriction upgrade.**

JAAG is requesting the above review and update as a result of the changing landscape in this narrow one-way street due to the number of developments that have occurred. The number of cars has significantly increased and there are areas of safety concern, specifically in the area up near the Upton Rd bridge. We also note that:

- Approximately 30 cars per day drive through the private 69 Wellington St, driveway and illegally and dangerously turn left down Nelson street (one way) to access apartment buildings rather than come in from the legal entrance of Punt Road.
- Parking is not controlled frequently enough (1hour limit is being abused due to lack of parking control), specifically backpacker and trades vehicles are worst offenders.
- Street parking is at its limit of an evening due to now parking restrictions and apartments not providing enough on-site parking.
- The speed limit is not adhered to and we request the council updates the road to remove this problem to control of speed (possible installation of speed humps)?

- **Charnwood Rd lighting:**

- Security lighting - the park is in darkness at night and is only lit by indirect streetlamps (obscured by tree leaves in the summer). We request lighting on the footpaths for safety.
- Safety flood lighting along the Charnwood Rd park section and pathway is required. None is provided and what is already in place along the eastern boundary/footpath should be repeated along Charnwood Rd to make this section safer at night

- **Landscaping to the triangle reserve adjacent to the Astor Theatre**

The Junction Area Action Group (JAAG) would like to formally again submit a request be included in Council's 2020-2021 budget to upgrade the triangle reserve on the corner of Chapel & Wellington Street, St Kilda adjacent to the Astor Theatre.

This request is strongly supported by the owner of the Astor (Ralarar Nominees P/L) and has the in-principle support of Palace Cinemas and St. Michael's School.

### Context

With Stage 3, the last stage of the Wellington Street, St Kilda street upgrade project, there is no provision for safety upgrades and landscaping to the triangle reserve and pram crossings which form part of this major, highly visible and congested gateway to our City (i.e. the intersection of Chapel Street, Dandenong Road & Wellington Street, St Kilda adjacent to the Astor theatre), it has been ignored.

One reason we believe it has been ignored was the lack of clarity of who is responsible for this pocket of land being the council or the Department of Transport. We have received clarity and direct you to Attachment A "*RE: Triangle Reserve adjacent to Astor Theatre, Cnr Wellington & Chapel Streets, St Kilda*", where the Department of transport confirm the council is responsible.

Identified problems are:

- Safety, due to the limited footpath space for pedestrians and bike riders waiting to cross Dandenong Road or Chapel Street. This corner has very heavy foot traffic including students from St Michaels, CBC and St Mary's schools, patrons of the Astor theatre, local residents and visitors to the busy Chapel Street, Windsor precinct.
- Lack of any ground maintenance or landscaping - the area is dirt in summer and scruffy weeds in winter, and the trees are straggly and in poor health.

Considering users at this location are older adults, young children, people with mobility disabilities, people using mobility aids such as prams, pushers, wheelchairs, walking aids etc. as well as people with vision and hearing loss.

What we are seeking from Council is to provide:

- Considerations for equitable and safe use by people with a disability including installation of tactile ground surface indicators at the pram crossings;
- Removing the current trees in poor health and providing appropriate replacement shade trees with clear lines of sight.
- Better use of the area by converting the current dirt triangle reserve to a landscaped area, with a wide hard tiled surface which is level, firm, slip resistant surface in both wet and dry conditions (similar to that used by Stonnington Council adjacent to the nearby Windsor Station);
- provision of seating, bins appropriately located near seating and clear of the congested pathways
- Bike racks for patrons attending the Astor theatre as currently this facility is not available given the narrow footpath on Chapel Street in front of the Astor.

We believe this suggestion will reduce landscaping maintenance and could provide a business case payback of 2-3 years (on the proviso, garden maintenance was being performed), making it an attractive project to approve.

We see this as a stand-alone project, separate to the Stage 3 Wellington Street upgrade.

## Attachment A:

**From:** Suzane Becker <Suzane.Becker@portphillip.vic.gov.au>

**Sent:** Tuesday, October 22, 2019 1:52 PM

**To:** [REDACTED] Lili Rosic <Lili.Rosic@portphillip.vic.gov.au>

**Cc:** Mayor - City of Port Phillip <mayor@portphillip.vic.gov.au>; Andrew Bond - Councillor <Andrew.Bond@portphillip.vic.gov.au>; David Brand - Councillor <David.Brand@portphillip.vic.gov.au>; Katherine Copsey - Councillor <Katherine.Copsey@portphillip.vic.gov.au>; Mark Fusco <Mark.Fusco@portphillip.vic.gov.au>

**Subject:** RE: Triangle Reserve adjacent to Astor Theatre, Cnr Wellington & Chapel Streets, St Kilda

Good afternoon [REDACTED]

VicRoads have reviewed the ownership details of the land adjacent to the Astor Theatre and have advised Council that the parcel of land is owned by VicRoads but is not declared as part of the road. The following information was provided to Council from Vic Roads on the 17 October 2019.

*"Based on our declaration records and previous investigations, it appears that a part of L17282 has been declared as Queens Way (in the Government Gazette, page 2077, June 17, 1970) and the balance is owned by the Roads Corporation and remains not declared.*

*I have attached the title information and gazette details as requested and I provide the following information with regards to your query "who is the Responsible Road Authority"*

*Subject to section 37 of RMA 2004, the demarcation of operational responsibilities between VicRoads and Councils for public Roads has been determined by Code of practice (RMA).*

**The code of practice only applies for the declared road extent and not for the rest of the area in the title which is owned by VicRoads.**

*Also, note that under section 37 of the RMA 2004, (for arterial road/urban area), VicRoads is the responsible road authority for the part of the roadway used by through traffic.*

**Diagram (lines and polygons are indicative only)**



We understand that VicRoads has no current plans to upgrade the not declared parcel of land.

As you are aware Council is currently investing in civil works to the Wellington Street/Dandenong Road intersection to slow traffic speeds, improve safety, pedestrian and cycle connections and to contribute to creating a village feel for Wellington Street. The scope of this work does not include an upgrade to the “not declared” parcel of land owned by Vic Roads, adjoining the Astor Theatre.

The Council plan or budget does not include plans to upgrade this VicRoads owned land. Community members are able to provide submissions of ideas for consideration through the annual Council budget process. We recognise that any proposals to upgrade this land would require VicRoads approval.

I hope this information provides some clarification on this matter. I appreciate your patience given the time taken to get an answer to your enquiry.

Regards

**Suzane Becker**

Manager Transport Choices | Transport Choices

T: [REDACTED] | M: [REDACTED]

St Kilda Town Hall | 99a Carlisle Street, St Kilda, Victoria 3182



**From:** [REDACTED]  
**Sent:** Monday, 21 October 2019 3:23 PM  
**To:** Lili Rosic <[Lili.Rosic@portphillip.vic.gov.au](mailto:Lili.Rosic@portphillip.vic.gov.au)>  
**Cc:** Mayor - City of Port Phillip <[mayor@portphillip.vic.gov.au](mailto:mayor@portphillip.vic.gov.au)>; Andrew Bond - Councillor <[Andrew.Bond@portphillip.vic.gov.au](mailto:Andrew.Bond@portphillip.vic.gov.au)>; David Brand - Councillor <[David.Brand@portphillip.vic.gov.au](mailto:David.Brand@portphillip.vic.gov.au)>; Katherine Copsey - Councillor <[Katherine.Copsey@portphillip.vic.gov.au](mailto:Katherine.Copsey@portphillip.vic.gov.au)>; Suzane Becker <[Suzane.Becker@portphillip.vic.gov.au](mailto:Suzane.Becker@portphillip.vic.gov.au)>; Mark Fusco <[Mark.Fusco@portphillip.vic.gov.au](mailto:Mark.Fusco@portphillip.vic.gov.au)>  
**Subject:** Triangle Reserve adjacent to Astor Theatre, Cnr Wellington & Chapel Streets, St Kilda

21 October, 2019

Ms Lili Rosic

GM City Strategy & Sustainable Development | City Strategy & Sustainable Development  
City of Port Phillip  
Private Bag 3  
PO St Kilda 3182

Dear Ms Rosic,

**Re: Triangle Reserve adjacent to Astor Theatre, Cnr Wellington & Chapel Streets, St Kilda**

Earlier this year the Junction Area Action Group (JAAG) formally submitted a request for the upgrade of the triangle reserve adjacent to the Astor to be upgraded, and spoke to its submission at Council's 4<sup>th</sup> June, 2019 Budget meeting. A copy of that request is attached. At that meeting you advised Council that the land in question was owned by VicRoads and had nothing to do with Council.

In light of your advice Council rejected the request and the Mayor suggested that JAAG pursue with VicRoads.

JAAG subsequently took up the matter with our local State member, Sam Hibbins. In response to a request from Sam Hibbins, VicRoads advised that this triangle is a 'declared road'. As such, it is Council's responsibility to maintain the area. It appears Council rejected JAAG's request on the basis of advice which was incorrect.

This triangle forms an important part of a major and highly visible gateway to our City. As the attached photos which accompanied a recent request to Assist show, the area is very neglected and reflects poorly on our City's image. We ask Council to take immediate action to ensure that this area is regularly cleaned and maintained, as well as the triangle piece of land between Wellington Street & Dandenong Road/Queens Way, and to put in place a program for the beautification of the triangle reserve adjacent to the Astor in line with JAAG's earlier submission.

Yours sincerely

[REDACTED]

For Junction Area Action Group

[REDACTED]  
[www.jaagstkilda.com](http://www.jaagstkilda.com)

cc: Mayor Gross- City of Port Phillip  
Councillors Bond, Brand & Copsey

REQUEST FOR GARDEN REMEMBRANCE FUNDING "HAVE YOUR SAY" 2021 BUDGET.

Council,

The necessary funding of \$22,000 to complete the work on the Remembrance Garden installed by Council in 2018 in the Port Melbourne Railway Reserve was not provided in that year and requests for inclusion in successive budgets have been unsuccessful. Neither has funding been included in the draft budget for 2021.

Completion of the Garden involves the installation of up to five panels/plaques on social history, military and cultural heritage themes. This will promote the Gardens significance to local residents, visitors, military and social history and to schools. Without this, the Garden is adversely impacted and does not do justice to this important Council asset.

Almost a thousand residents of our City lost their lives in WW1 and several hundred's in WW2 and there were many more who returned traumatised and wounded and died shortly thereafter. It is important that they be properly memorialised as also should the impact on their families and other citizens of our City left behind. To continue to leave the Garden unfinished is to fail in our duty to all of them.

Over 100 years ago, it is thought that returning soldiers brought back with them to Australia the Spanish Flu. Another consequence of World War I. The Remembrance garden is an appropriate place to acknowledge the impact that the Wars overall had on our community then and now.

Funding for this project in the 2021 budget is particularly relevant as we celebrate the 75th anniversary of Victory in Europe and the Pacific.

It is appreciated that COVID-19 has had an immense impact on the Council's capital budget, however it is contended that the capital for this project is minimal. Plans for the Garden have long been finalised and the work can be completed without delay.

It is respectfully requested that the \$22,000 needed to complete the work on this project as per the final design, be reviewed for inclusion in the 2021 budget.

Yours Sincerely,

CBR-007

18th February 2020

P.O.Box 29,  
Albert Park,  
Vic. 3206.

Cr. B. Voss,  
Mayor,  
City of Port Phillip.

Dear Councillor, *Bernadene*

**Garden of Remembrance**

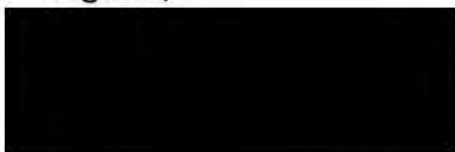
Belated congratulations Bernadene on your election of Mayor of our great City.  
Please find attached copy of Email to you of 20<sup>th</sup> November last concerning the above.

At the WW2 Commemorative Committee meeting today I raised this matter of completion of the Garden as per the original Brief and suggested that I follow up this matter with you which was supported by the Committee.

I strongly believe that the Garden needs a more visible identity for residents and visitors which would be provided by completion according to the Brief.

I would appreciate your advice in this matter and any further action you suggest I may take to bring this project to fruition.

Regards,



c.c.  Team Leader, Culture and Heritage.

<b>CITY OF PORT PHILLIP</b>	
DATE RECEIVED	
25 FEB 2020	
REFERRED To: .....	<i>B. Voss</i>
FILE No: .....	<i>18/04/153</i>
RECORD No: .....	

20  
P.O.Box 29,  
Albert Park,  
Vic. 3206.

Cr. B. Voss,  
Mayor,  
City of Port Phillip.

Dear Councillor,

Garden of Remembrance

Belated congratulations Bernadene on your election of Mayor of our great City.  
Please find attached copy of Email to you of 20<sup>th</sup> November last concerning the above.

At the WW2 Commemorative Committee meeting today I raised this matter of completion of the Garden as per the original Brief and suggested that I follow up this matter with you which was supported by the Committee.

I strongly believe that the Garden needs a more visible identity for residents and visitors which would be provided by completion according to the Brief.

I would appreciate your advice in this matter and any further action you suggest I may take to bring this project to fruition.

Regards,

  
c.c.  Team Leader, Culture and Heritage.

[REDACTED]

---

**from:** [REDACTED]  
**sent:** Wednesday, 20 November 2019 10:33 AM  
**to:** 'b.voss@portphillip.vic.gov.au'  
**subject:** Garden of Remembrance

Dear Bernadene,

was pleased to see you again and also, many other Councillors at the Remembrance Service in the Garden at Pot Melbourne on Sunday 10<sup>th</sup> November which I thought was again a most fitting event on our City's calendar further to our brief discussion concerning completion of the Remembrance Garden as per the original brief I believe it is most appropriate that as chairperson of then WW1 Committee for you to again take to Council the necessary funding required of \$22,000 for the work to complete the brief. As you will recall, this involves design, production and installation of up to five interpretive panels/plaques on social history, military and cultural heritage themes which will add to the Gardens significance to local residents, visitors, military and social history and to schools. Presumably this funding should be included in the budget for the 2020/21 financial year and ideally for the work to be completed by Remembrance Day 2020.

The several other Councillors I spoke on the day were all supportive of this proposal. I look forward to hearing of a positive outcome in this matter and thank you for your support.

With kind regards,  
[REDACTED]

[REDACTED] / ASSIST, please ensure this email reaches all Councillor. Thank you.



CBR-007

## 15. NOTICES OF MOTION

I, Councillor Bernadene Voss, give notice that I intend to move the Motion outlined below at the Ordinary Meeting of Council on 5 September 2018:

That Council:-

- 1 Supports the World War I Centenary Community Commemorative Committee proposal to provide a place for contemplation, engagement, understanding and learning about World War including its impact, ramifications and legacy from a community perspective, in the railway reserve along Station Street, Port Melbourne, between Ingles and Bridge streets.
- 2 Notes that the project has been developed by the committee, which comprises members of the St Kilda Historical Society, Port Melbourne Historical and Preservation Society, Middle Park History Group, local veterans and military historians, and representatives from St Kilda RSL Sub-Branch and Friends of Elwood RSL.
- 3 Notes that the project will be delivered in time for Remembrance Day, 11 November 2018 and will be managed by City of Port Phillip staff.
- 4 Notes that the Committee successfully applied for an Armistice Centenary Grant of \$29,768, issued by the Department of Veteran Affairs, and was unsuccessful in seeking grant funding from the Department of Premier and Cabinet.
- 5 Approves \$20,232 of unbudgeted expenditure as Council's contribution to the initiative, bringing the total cost of the project to \$50,000.

### Supporting Information

The World War I Centenary Community Commemorative Committee was formed in 2014 as a subcommittee of the Cultural Heritage Reference Committee to assist Council by providing informed community input, advice and feedback to Council's centenary commemorative events and programs.

The Committee identified that there is no one place in the municipality that represents the stories and experiences shared by all our residents affected by the Great War.

Our monuments memorialise those who served, but don't tell the broader cultural heritage and local history stories of our home front, the impact on those left behind, the women who supported their families, and the conflicts within our community around matters such as conscription. Historically we look to memorialise our lost sons, but this is an opportunity to look here at the broader family impact and the community effect.

The Committee developed this proposal for the creation of a place whose purpose is to acknowledge those who served in World War I, recognise the social, cultural, political and industrial environment of the time, and provide an understanding of the impact of the Great War on the local community.

This proposal is a sensitive, low impact placemaking project which invites the community to see beyond the drama of the war overseas to consider what it meant to be here, to wave off family at the piers at the end of the railway line and to welcome them back, to live alongside people who were suddenly considered the enemy, to contribute to the war effort and to challenge our very participation in this conflict.

## ORDINARY MEETING OF COUNCIL 5 SEPTEMBER 2018



This garden will be a place for reflection, for consideration and for contemplation; it will look at this global conflict through a personal and local prism, and will also provide a place for thinking about what is happening in our world now.

It will provide the community with a place to consider the individual experiences and collective stories which have shaped our understanding of the Great War, and provide opportunities for further reflection, engagement and interpretation for this war and subsequent conflicts and peacemaking operations.

This place will comprise new tree plantings (with species which are relevant to the stories being told), interpretive plaques, an information panel and new seating around a central area.

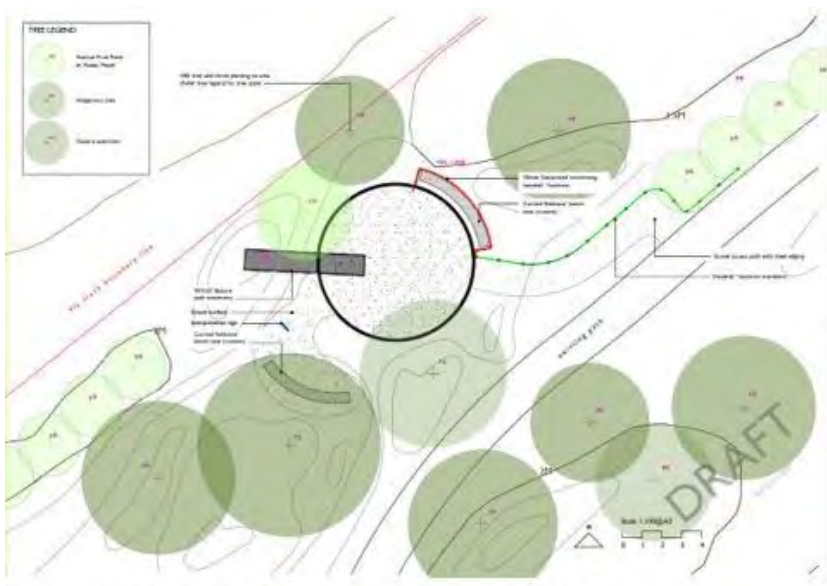
The garden will also have an online component which will include information about the Great War and its impact in Port Phillip and the only complete list within the municipality of those residents who lost their lives during the war.

Local community members and groups, as well as schools, can gather at the site for educational, commemorative and performative events.

This proposal has come from our community – it is an idea to unite our municipality and, in this last year of commemorating the Great War, to provide a place that represents not the glorification of war but the stories of the people, our community whose lives were irreparably changed.

Draft concept designs on following page.

# ORDINARY MEETING OF COUNCIL 5 SEPTEMBER 2018



Draft concept design of seating area, interpretive sign and bench



Draft concept design of seating area, interpretive sign and bench



CBR-007

22 June 2020

A request is made for funds to complete the work on the Remembrance Garden, installed by Council in 2018 in conjunction with the World War I Centenary Community Commemorative Committee. Two successful Remembrance Day events have now been held at the garden with the guest speakers being Michael Bennett, great-grandson of Sir John Monash (2018) and Col. John Coulson OAM RFD ED (2019). Council is planning a 2020 Remembrance Day event marking the 75<sup>th</sup> anniversary of the end of World War Two, subject to the loosening of covid-19 restrictions.

The \$22,000 in funding will be to complete the brief, including design, production and installation of up to five interpretative panels/plaques on social history, military and cultural history themes, which will add to the Garden's significance to local residents, visitors, military and social history, and to schools.

### **Background information from 2018 and concept designs**

The World War I Centenary Community Commemorative Committee was formed in 2014 as a subcommittee of the Cultural Heritage Reference Committee to assist Council by providing informed community input, advice and feedback to Council's centenary commemorative events and programs.

The Committee identified that there is no one place in the municipality that represents the stories and experiences shared by all our residents affected by the Great War.

Our monuments memorialise those who served, but don't tell the broader cultural heritage and local history stories of our home front, the impact on those left behind, the women who supported their families, and the conflicts within our community around matters such as conscription. Historically we look to memorialise our lost sons, but this is an opportunity to look here at the broader family impact and the community effect.

The Committee developed this proposal for the creation of a place whose purpose is to acknowledge those who served in World War I, recognise the social, cultural, political and industrial environment of the time, and provide an understanding of the impact of the Great War on the local community.

This proposal is a sensitive, low impact placemaking project which invites the community to see beyond the drama of the war overseas to consider what it meant to be here, to wave off family at the piers at the end of the railway line and to welcome them back, to live alongside people who were suddenly considered the enemy, to contribute to the war effort and to challenge our very participation in this conflict.

This garden will be a place for reflection, for consideration and for contemplation; it will look at this global conflict through a personal and local prism, and will also provide a place for thinking about what is happening in our world now.

It will provide the community with a place to consider the individual experiences and collective stories which have shaped our understanding of the Great War, and provide

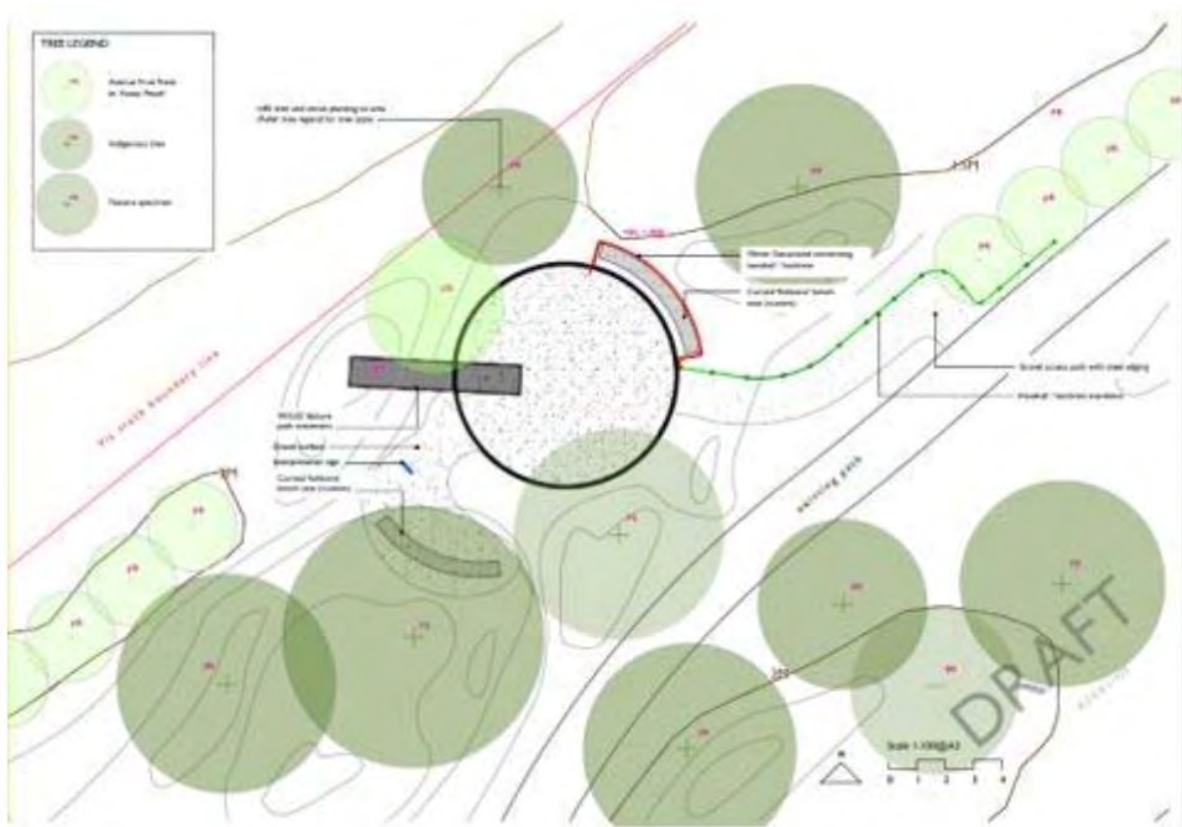
opportunities for further reflection, engagement and interpretation for this war and subsequent conflicts and peacemaking operations.

This place will comprise new tree plantings (with species which are relevant to the stories being told), interpretive plaques, an information panel and new seating around a central area.

The garden will also have an online component which will include information about the Great War and its impact in Port Phillip and the only complete list within the municipality of those residents who lost their lives during the war.

Local community members and groups, as well as schools, can gather at the site for educational, commemorative and performative events.

This proposal has come from our community – it is an idea to unite our municipality and to provide a place that represents not the glorification of war but the stories of the people, our community whose lives were irreparably changed.



*Draft concept design of seating area, interpretive sign and bench*



*Draft-concept design of seating area, interpretive sign and bench.¶*

**CBR-008**

**From:** [REDACTED]  
**Date:** 30 April 2020 at 10:24:42 am AEST  
**To:** Councillors <[Councillors@portphillip.vic.gov.au](mailto:Councillors@portphillip.vic.gov.au)>  
**Cc:** [REDACTED]  
**Subject:** Fw: TT Buckingham Reserve Upgrade works

Dear Councillors,

I am [REDACTED] and attended a Council Budget meeting for 2018/19 with [REDACTED] as per the email below. I am writing to confirm that TT Buckingham Reserve upgrade / refresh is the highest priority for our local community, particularly at a time like this with COVID-19 restrictions are in place and expected to be for some time yet. The need for open spaces to be suitably designed and safe is critical in supporting the physical and mental health of all residents.

I am disappointed to hear that our planning work completed in 2019 may not go head to implementation. It is important that all Councillors are aware that the park has not received any funding or significant works in the last 20 years, aside from some basic maintenance. We have also just spent the last 2 years waiting and working through the council priority process and budget allocation process.

As more families and residents move to Garden City the functionality of this green space is essential to all residents of all ages. I understand the budget constraints that COVID-19 is placing on all State and Federal government budgets, with these being moved to October 2020. I am saddened to hear that Port Philp council is in the midst of a 'budget crisis', however we encourage you to please prioritise these works given the years of neglect, which brings with it some risk to council, for example, the play equipment has been in place for 20 years and is now end life as such the safety risks to children needs to be balanced against the short-term financial impact.

As [REDACTED] has outlined below, we understand the need to be reasonable at a time like this, as such we recommend that the Council take a staged approach to the build and upgrade, if full implementation is not possible. Upgrade and re-orientation of the basketball area is needed greatly, as many kids in the area have grown up, now in their adolescent years and use this daily to stay active and out of trouble! We would appreciate you prioritising this given the volume of kids using this. [REDACTED] and I have some ideas as to how this may be able to be upgraded in its existing place to minimise concerns from residents and to reduce the cost to council.

We would welcome the opportunity to talk further with the councillors about the need for the TT Buckingham Reserve refresh/ upgrade works to continue.

Kind Regards

[REDACTED]  
[REDACTED]  
[REDACTED]  
[REDACTED]

[REDACTED]  
**Sent:** Tuesday, 28 April 2020 8:19 PM

**To:** [Councillors@portphillip.vic.gov.au](mailto:Councillors@portphillip.vic.gov.au) <[Councillors@portphillip.vic.gov.au](mailto:Councillors@portphillip.vic.gov.au)>

**Cc:** [REDACTED]

**Subject:** TT Buckingham Reserve Upgrade works

Dear Councilors,

I am a resident in Dunstan Parade and live opposite TT Buckingham Reserve. The Reserve was identified in Council's Play Space Strategy **8 years** ago, in 2012, as a "*high priority to design and upgrade aged play equipment and seating; incorporate play elements with weeping tree planting*".

Two years ago, in 2018, my neighbour [REDACTED] and I attended a Council Budget meeting for 2018/2019 to request that funding be allocated towards this badly overdue upgrade to our park. After our attendance at the Council meeting in 2018, we were very pleased to be informed (refer attached letter from Bernadene Voss) that budget was allocated within the Parks and Playground Renewal and Upgrade Program for a play space upgrade in TT Buckingham Reserve. As per the letter, community consultation, concept and detailed design were planned for **2018/19** and construction proposed for **2019/20**. To date, we have had two community consultation meetings with the design team and there has been some preliminary works done to the irrigation system. **Unfortunately, construction was not completed as planned this current financial year.** We have not been advised why this is the case, nor have we been given any indication what stage the project is at.

I am writing to you now as I have been advised that the progress of this upgrade project will be impacted by the "budget crisis" and that it will most likely be cut altogether. Given the project **should have been completed by now, and was originally allocated funds in the past 2 financial years' Budgets** we request that Council do everything in its power to either:

1. Reinstate the project if in fact it has been cut from the 2020/2021 budget, or,
2. Review the project scope and budget for a pared back version to be implemented as a matter of urgency.

If the project needs to be significantly rationalised, I'd like to make some suggestions for a staging solution for some key elements of the park that need desperate attention:

- **Basketball hoop:** the basketball ring is facing the wrong direction – so you currently shoot facing into the sun - and is on a very small concrete apron, not even a half court. As a priority first stage and a relatively low-cost item, the basketball hoop and shooting apron should be kept in its current location, with the pole and backboard/ring located on the opposite side of the concrete square from where it currently sits, so you face south when shooting. If funds permit, the concrete apron which forms the shooting area, should be also made larger along with new line marking. Potentially, the existing pole and backboard could be retained and reused, so then it's just a bit of demolition, excavation for a new concrete slab, line marking and re-installation of the pole. There is already lighting in its current location.
- **Play equipment:** as exists is very old and presumably at the end of its safe life. This will need to be addressed in the medium term as funds permit, but perhaps the scope could be reduced significantly so that it involved replacing old/damaged equipment with new as required.

- **Irrigation system**, which has - according to CoPP Open Space and Recreation Services - not been operational for at least 15 years, is completely defunct. Presumably this upgrade will be a significant cost, so as a medium-term solution, portable sprinklers could be brought to the park and hooked up to the mains water supply valves a couple of times a week during the dry season months.

The Reserve is a valued community hub and will provide a vital relief valve once social distancing regulations demanded by the Covid 19 pandemic have been relaxed. Council needs to pay this essential piece of infrastructure the attention it deserves, and invest, as promised, in its future.

Yours Sincerely,

[REDACTED]  
[REDACTED]  
[REDACTED]  
[REDACTED]

**CBR-010**

**From:** [REDACTED]

**Sent:** Thursday, April 23, 2020 3:42:19 PM

**To:** Tim Baxter - Deputy Mayor <[Tim.Baxter@portphillip.vic.gov.au](mailto:Tim.Baxter@portphillip.vic.gov.au)>; Louise Crawford - Councillor <[Louise.Crawford@portphillip.vic.gov.au](mailto:Louise.Crawford@portphillip.vic.gov.au)>; Dick Gross - Councillor <[Dick.Gross@portphillip.vic.gov.au](mailto:Dick.Gross@portphillip.vic.gov.au)>; Andrew Bond - Councillor <[Andrew.Bond@portphillip.vic.gov.au](mailto:Andrew.Bond@portphillip.vic.gov.au)>; David Brand - Councillor <[David.Brand@portphillip.vic.gov.au](mailto:David.Brand@portphillip.vic.gov.au)>; Katherine Copsey - Councillor <[Katherine.Copsey@portphillip.vic.gov.au](mailto:Katherine.Copsey@portphillip.vic.gov.au)>; Ogy Simic - Councillor <[Ogy.Simic@portphillip.vic.gov.au](mailto:Ogy.Simic@portphillip.vic.gov.au)>

**Subject:** COPP budget and funding to SPCC to support vulnerable residents

Dear Port Phillip Councillors,

Currently Port Phillip Council provides SouthPort Community Centre support through a number of long-term funding deeds to provide a range of programs that support our most vulnerable and isolated residents in Port Phillip.

With your help we are able to make the following impact across isolated and vulnerable communities in Port Phillip each year from these funded programs:

- Engaging more than 500 participants from isolated, at risk and vulnerable Port Phillip families through our holiday program **Get Out of Town** every year. This program has helped thousands of at risk families to increase resilience and inclusion and connect to services over the past 15 years.
- More than 25 vulnerable people with disabilities and mental health issues attend weekly engagement groups, including Monday Drop In and a special Women's Activity Group. These programs provides vital support to some of our most vulnerable community members not linked into NDIS.
- Our community is inspired through the incredible performances of City of Voices inclusive disability theatre group.
- Our older residents can keep fit, healthy and connected through a weekly series of exercise and well-being programs.
- Forty (40) long-term unemployed students per year are able to access employability training, with 91% of graduates successfully transitioning into employment, skilled volunteering or further study.
- More than 50 older, isolated residents together provide more than 800 volunteer hours a year through our Waterfront Welcomers program.

None of this would be possible without your support. Thank you.

SPCC has moved quickly to pivot our services in the face of the COVID-19 crisis and have continued to support our program participants even in this difficult time. As you know, SPCC has an outstanding reputation in successfully engaging isolated, at risk groups in Port Phillip and providing pathways out of disadvantage, winning Victorian Learn Local awards in 2015 and 2016. With your continued support SPCC will be in a position to both continue those efforts and help to drive community recovery efforts when the crisis abates.

Please find attached a short overview of each program, including a per program funding breakdown and details on how they are pivoting to face the challenges of COVID-19.

I have also included a link to a recent video made by council to celebrate the partnership between SPCC and Port Phillip: <https://www.facebook.com/156939411038925/videos/803383750058916/>

We understand that COPP are facing considerable budgetary restraints due to the impact of COVID19 and that you will have to make many tough decisions in the months ahead. Nevertheless, we ask that you support the continued funding of SPCC programming into the 2020-2021 year. A reduction in funding would threaten the viability of these important programs, leave vulnerable community residents without vital support, and threaten the ongoing viability of SouthPort Community Centre.

Our thoughts are with you and your colleagues in this difficult time and we look forward to continuing to work with you for the betterment of our community and to support our most vulnerable residents.

If you have any further questions, I would be more than happy to discuss these at your convenience. I can be contacted via mobile [REDACTED]

Yours sincerely,

[REDACTED]  
Manager  
154 Liardet St, Port Melbourne  
PO Box 721, Port Melbourne  
Ph: 9645 1476 Fax: 9645 4539  
Web: [www.southportcc.org.au](http://www.southportcc.org.au)






CBR-011

- 
- Questions on the Draft Budget

On behalf of the Older Persons Consultative Committee of Council,(OPCC) I would like to present our priorities for 2020, and invite comment in relation to Council budget allocations.

These areas are of high importance to our constituency, which includes some of the most isolated and vulnerable members of our community.

- Improving street safety and amenities-Streetlights, footpaths, outdoor seating.
- Housing and homelessness initiatives, particularly the impact on older women. (This point is reported as being as high as 55% of the overall issue. ABC National Radio 5/5/2020. My point in paranthesis).
- Aged Care Services-will Council continue to provide services and subsidies to the same level as previous years or higher?
- Provision of health and wellbeing opportunities for older people-eg funding exercise programs, funding social inclusion projects such as the unique Linking Neighbours program, Seniors festival, library services.
- Continuing to mitigate the impact of Climate Change on older people
  - Provide accessible information for Older People on services and amenities.

 (Chair OPCC)



**Bring Back Brookes Jetty Inc.****28 May 2020**

Dear Mayor Voss

**Re: Rebuilding Brookes Jetty – Funding Proposal**

Thank you for email, on 18 February, in reply to my letter to you of 31 January 2020, presenting our Initial Business Case. Thank you for the Council's commendation of our work.

In your email, you mentioned the Council's resolution to seek funds from the Victorian Government to contribute to the enhancement of the Melbourne Water Shakespeare Grove drain project, and to ask that Melbourne Water consider the winning designs of the Leighton Prize in the development of options for rebuilding the Shakespeare Grove drain.

We can advise that the jetty design competition was highly successful, with 108 imaginative and thoughtful entries being received, including many from interstate and overseas. Leighton Prize was awarded to an entry from Portugal. Information on all the entries is available on our web site at [www.bringbackbrookesjetty.org](http://www.bringbackbrookesjetty.org).

In your email you also mentioned the Council's plan to create a new forecourt for the Palais Theatre, which we now see has a budget of \$1.3 million. From our viewpoint, the expenditure of such an amount on a new jetty would provide much better public amenity and provide a much greater benefit to local businesses.

The reasons for this are outlined in our Initial Business Case, which you may also find on our web site along with support letters from local business groups. The key difference is that a new jetty, unlike a new forecourt, has the potential to attract a large number of additional visitors to St Kilda.

We note that in relation to the pandemic, the Federal Government has announced, on 22 May, a [\\$1.8 billion fund](#) available to local governments for the purpose of infrastructure upgrades and community facilities. We believe that a rebuilt jetty would be an ideal candidate for the use of these funds.

In relation to the drain, to be rebuilt by Melbourne Water in 2021, we approve of their proposed "Circle of Reflection" design. Proposals similar to this, but located at the end of a new jetty, were envisaged in quite a few of our jetty design competition entries.

We believe that a significant opportunity exists to co-operate with Melbourne Water to provide funds for them to extend their "Circle of Reflection" further out to sea. This would then provide an attraction that is suitable for the site's potential. Unlike a new drain, it would provide an attraction with the public amenity we seek and that the local businesses desire.

As [REDACTED], of St Kilda Tourism and Events says in his support letter: “we have a *once in a generation* opportunity to make this stretch of foreshore the best in the country”. At a time when local businesses are in desperate need of support due to the pandemic, we should not waste this opportunity.

We commend this to you for your consideration. We would welcome an opportunity to meet with you to discuss the proposal further.

[REDACTED]

For Bring Back Brookes Jetty Inc.

[www.bringbackbrookesjetty.org](http://www.bringbackbrookesjetty.org)

**CBR-013**

**From:** [REDACTED]  
**Sent:** Tuesday, 2 June 2020 8:46 AM  
**To:** Councillors <[Councillors@portphillip.vic.gov.au](mailto:Councillors@portphillip.vic.gov.au)>  
**Subject:** proposed cuts

**[External Email] Please be cautious before clicking on any links or attachments.**

Seems council is considering cutting free entry to Rippon Lea Gardens??!!! Such a great initiative for local families - free open space in summer for free play, picnics & exploring when our foreshore parks are a sea of commercial canvas & outdoor music & incoming tourists. My suggestion is don't cancel this but publicise it more, in school newsletters, at community centres on their noticeboards etc. Let people know its available. Likewise why oh why is Divercity being ditched?? Its such a great way to communicate what is happening in our wonderful city, and so essential for those in our community who don't use or have access to social media and other tech forms of info. I keep it by me & hang out for the next edition. Its colourful, appealing & informative. So much of our city caters for visitors - these are two simple offerings for residents & help to keep the community just that, a community, by informing us what is happening all over the city not just in our immediate backyards. Surely the cost of maintaining these two offerings pale next to the cleanup costs of the Festival or Gran Prix? Please please reconsider and weigh the budgetary savings against the loss of amenity for residents who are constantly feeling the squeeze of irrelevance next to out of city visitors. Yes we need the visitors but its the residents who create a living vibrant city that attracts the visitors. Port Phillip has undergone many changes in the 40 yrs I have lived here but the saddest is the emphasis given to providing amenity for out of city visitors vs residents and ratepayers, please reconsider. I do expect a reply to this email.

Regards  
[REDACTED]

**Beacon Cove Neighbourhood Association Inc. (Registered Number A0012597Z)**

**Private Box 61/103 Beach Street, Port Melbourne Vic 3207**

President: [REDACTED]

Secretary: [REDACTED]

Mr. Peter Smith  
Chief Executive Officer  
City of Port Phillip  
Private Bag 3  
ST KILDA Vic 3182

19<sup>th</sup> March 2020

Dear Peter

**RE: BCNA SUBMISSION REGARDING PRIORITIES FOR COUNCIL'S 2020-21 BUDGET**

I am writing to attach our submission regarding priorities for Council's forthcoming budget.

Do not hesitate to contact me if further information is required.

Yours sincerely

[REDACTED]

President  
Beacon Cove Neighbourhood Association  
Email: [REDACTED]  
Website: [www.beaconcove.org.au](http://www.beaconcove.org.au)  
Cc Councillors Voss, Pearl and Simic

<b>CITY OF PORT PHILLIP</b>
DATE RECEIVED <i>P. Smith</i> 26 MAR 2020
REFERRED TO: <i>16/02/240</i>
FILE No: .....
RECORD No: .....

## City of Port Phillip 2020-21 Planning and Budget cycle

### Beacon Cove Neighbourhood Association (BCNA) submission

The BCNA raises the following issues, in priority order, for consideration by Council in developing the 2020-21 budget:

#### 1. Traffic management through Beacon Cove

Poor traffic flows are an increasing problem in the area. The flows are particularly problematic when cruise ships and the *Spirit of Tasmania* are at berth. The introduction of traffic wardens by the Victorian Ports Corporation (Melbourne) has helped. Heavy traffic cays can cause 'grid lock' at the Princes Street roundabout. This causes delays to freight and passengers moving to and from Station Pier as well as other users. VicPorts has a responsibility to improve flows to enable freight and passengers to move easily to and from Station Pier.

*BCNA recommends a traffic survey with the Victorian Ports Corporation (Melbourne) to better understand traffic flows with a view to identifying steps to improve flow and functioning of the entire area.*

#### 2. Safety of pedestrians, tram users and cyclists near the Beacon Cove stop (Stop 129) on the 109 service

The safety of pedestrians, tram users and cyclists at this spot continues to be a major concern. Re-routing of the bike path away from this area should be considered. One possibility is to divert the bike path approaching Waterfront Place to turn at the Princes Street roundabout to follow Beach Street before turning to follow the path adjacent to the light rail towards the city. This and other options should be studied and discussed with the community.

*BCNA recommends Council actively review alternative routes to take cyclists away from Stop 129, Beacon Cove, on the 109 service.*

#### 3. Waterfront Place Precinct

The entire area requires review and planning to improve functioning.

*BCNA recommends continuing co-operative action by the City of Port Phillip with VicPorts and the Victorian Government.*

#### 4. Poor state of the road surface in Beach Street between Bay Street and Waterfront Place

The road surface is uneven and appears to be worsening. It requires renewal as it is a major thoroughfare and part of the national highway network.

*BCNA recommends renewal of this road surface.*

#### 5. Graffiti removal and prevention

Like other areas of the City of Port Phillip, graffiti is a continuing problem. BCNA commends Council for devoting increased resources to the problem. As Council would be aware, early removal of graffiti is a critical in minimizing future occurrences.

*BCNA recommends that Council continue to devote increased resources to graffiti removal and prevention.*

19 March 2020

May 29 2020

City of Port Phillip Councillors.

We, the undersigned, on behalf of the three Street Associations, wish to ask for the setting up of a Business Advisory Group for inclusion in the 2020-21 Budget. We understand that businesses make up about 20 per cent of the COPP rate collection income but there is little representation or allocation for funds to help businesses in the new budget.

We suggest that a Business Advisory Group could be set up with representatives from all the traders groups that have a special rate and to also include representatives from the traders of the wider municipality. For example from areas such as Balaclava, Elwood, Sth Melbourne, Middle Park and Albert Park. This group with representatives from Council as well, could then suggest, and enact programs that will enhance and promote business within the whole municipality, cooperating together.

Such a group would be best placed to decide on initiatives to promote the areas and to ensure the ongoing success of businesses while acknowledging the importance of the high streets not just for business and employment but also for the communities social well being.

Initiatives the Business Advisory Group could work on may include "shop local" campaigns, social media marketing or even infrastructure suggestions. One specific example of the latter could be the building of iconic, artistic or sculptural gateways to the shopping precincts from the beaches to provide cohesion to the areas and a flow between attractions such as the beach and the businesses behind them that support it. These "gateways" could be repeated throughout the city of Port Phillip but in ways that related specifically to each area.

Destination marketing and business support and development is vital to our ongoing success.

A Business Advisory Group would follow on and enhance any Place Making efforts to date but provide a more cohesive and municipality wide outlook.

Signed

[Redacted Signature]

[Redacted Name]  
President Acland St Village Business Association .  
per

[Redacted Name]  
President Port Melbourne Business Association,

[Redacted Name]  
President Fitzroy St Business Association,





CBR-016

**A proposal for City of Port Phillip  
by Upstride Agency + Andiamo Projects**

# **Community** **Christmas Tree** **Festival.**

**Helping Port Phillip businesses and  
tourism thrive this festive season.**

**June 2020**



**The Port Phillip Community Christmas Tree Festival is a month-long event leading into Christmas 2020. It is designed to bring delight to visitors and dollars to local businesses, heavily impacted by COVID-19.**

# How it works



1. Aug/Sep: Community space or empty shopfront (like Miss Fitzy's, Fitzroy St, or multiple empty Fitzroy St shopfronts) selected as venue/s.



2. Oct: Up to 100 Christmas trees purchased. Eol to businesses via City of Port Phillip channels



3. Oct/Nov: Venue and trees set up. Local businesses come in to decorate their tree in a way that resembles their business (they arrange own decorations)



4. Oct/Nov: Promotion and marketing



5. Nov/Dec: Open Thurs - Sun for 4 weeks. Visitors provide gold coin donation for entry. At exit they vote for their favourite tree. That business gets \$1 (if people give more than \$1, additional \$ goes to covering costs)



6. Week leading into Christmas: Visitor promotion continues, tree with most votes announced. Post-Christmas, businesses provided with funds raised

# Celebration out of hibernation

The Christmas Tree Festival is a popular annual community event in the rural Murrindindi Shire (see following pages). Businesses participate, however they do not receive any funds.

The devastating impact of COVID-19 on many Port Phillip businesses, however, make this concept a fun way to both support local business out of hibernation, while also attracting visitors to our fantastic city.

The City of Port Phillip can stage multiple events to celebrate this concept - an opening, plus an official inaugural winner announcement. It also provides lots of festive and energetic content for the city's social media channels.

Even a few hundred dollars raised through the festival for each business would no doubt be appreciated.

**Concept**

Left to right: Tree by a local plumber featuring taps and pipes, example venue set-up, tree by a local cafe with cups, tree by local electrician.



**Concept**

Left to right: Photo spot, trees by local emergency services (they can donate funds to a selected charity or divided between participating businesses).



# We'd love to do this with you

Upstride Agency is a Port Phillip communications agency based in South Melbourne. Its founder [REDACTED] lives with her family on Fitzroy St, St Kilda, and knows what a positive impact such a festival would have on her neighbourhood, and importantly, on local businesses and tourism.

Andiamo Projects is a specialist events business run by Melbourne-based expert [REDACTED]

As you are aware, the events and creative industries have suffered greatly throughout COVID-19. Delivering the Community Christmas Tree Festival for the City of Port Phillip would provide us local professional women with a positive project to partner with you on.

We can create an end-to-end festival with you, including arranging all associated processes, logistics, staffing, venue management, creative and promotional services.

If you would like to explore this concept with us further, we would love to Zoom with you.



# Our experience

We are two female-led, award-winning Victorian small businesses that are dedicated to generating work and continuing to operate through COVID-19.

## About Andiamo Projects

Andiamo Projects is an end-to-end project management company specialising in major events. Founded in 2015, Andiamo Projects has a strong cross-section of event experience in the sport, food and wine, government and corporate industries.

We have experience in experiential events and festivals all around Australia, from major sports events, to large-scale mass tourism events, key government events, and national event rollouts for iconic brands, with attendees ranging from 30,000 - 700,000 visitors.

With clients including the Australian Open, Tourism Australia, Australian Grand Prix, Channel 10, Melbourne Food and Wine Festival, Holden, Margaret River Gourmet Escape and Taste of Melbourne and Sydney, Andiamo Projects is highly trusted in their field to take an event concept and bring it to life.

We are the go-to for concept to completion in the major events industry and enjoy making a vision a reality.

## About Upstride

Upstride works with the public sector and other organisations on projects and initiatives that improve our communities, our natural environment, our health and our day-to-day lives.

Established in 2018 by award-winning government digital communication specialist and journalist [REDACTED], Upstride is based in Melbourne and works with clients across Victoria and Australia.

We believe in the transformative power of communication that connects with the right people, in the right way and at the right time.

We are discerning and we value simplicity, creativity and progress.



# Our experience

## Team

■■■■■ - Event Director, Andiamo Projects

■■■■■ is a highly experienced Project Manager who brings more than 15 years' experience in major projects and events along with a background comprising project management in large scale construction and tourism.

After working on 10 Good Food and Wine Shows, Australia's largest and most awarded consumer and food and wine exhibition with over 110,000 visitors across Melbourne, Sydney, Perth and Brisbane, ■■■■■ founded her own business, Andiamo Projects, in 2015. Today, Andiamo Projects has a strong cross-section of event experience in the major events industry all around Australia including major sports events, large-scale mass tourism events, key government events, and national event rollouts for iconic brands, with attendees ranging from 30,000-700,000 visitors.

■■■■■ has worked on many iconic and award-winning events. One key example is the iconic Margaret River Gourmet Escape, which ■■■■■ has worked on for the previous 5 years, a prestigious food and wine festival that boasts multiple awards such as the Australian Event Awards winner 2015-2016-2017, and gold (festivals and events) and silver (destination marketing) in the Australian Tourism Awards 2017, to name a few.

■■■■■ strength is understanding objectives and creating solutions along with managing multiple stakeholders and leading large teams to deliver events and activations to reach strategic objectives. ■■■■■ holds multiple degrees, including a Masters of Project Management completed in both Australia and Italy, in which she wrote her thesis on major events along with a Bachelor's double degree in Business and Tourism.

■■■■■ is a member of the Victoria University Alumni Advisory Board and is an official Victoria University Mentor to recently graduated alumni.

# Our experience

## Team

██████████ - Managing Director, Upstride Agency

██████ is an award-winning communications professional based in Melbourne. She founded Upstride in 2018 with more than 20 years' experience in private, public and third sector communications.

██████ began her career as a Herald Sun journalist, covering politics, health, education, courts, police and major disasters throughout the world.

She went on to lead strategic, content and digital communication teams and projects for a range of Victorian Government agencies, including the Department of Education and Training, the Independent Broad-based Anti Corruption Commission, the Department of Transport and the Department of Environment, Land, Water and Planning. She is a former chair of the Communications Committee for Victoria's Institute of Public Administration Australia (IPAA Vic) and was a former Digital Director at Think HQ.

██████ was the only Australian world finalist at the 2018 VR Awards (held in London), for Best VR Marketing in the World for her VR experience for Victoria's Department of Transport - 'Melbourne, meet your new train'.

██████ lives in St Kilda and holds a Master of Communication (Deakin University, 2017) and a Bachelor of Communication – Journalism (RMIT University, 2002). She is a member of the Public Relations Institute of Australia and also the Port Phillip Sustainable Business Network.

We can do this

# Our experience

## Team

██████████ - Marketing Director, Upstride Agency

██████████ leads Upstride's marketing and strategic functions having spent more than 10 years being passionate about brands, creating them, developing them and telling their story through effective communication.

██████████ is a highly motivated marketing communications professional with diverse experience across B2B and B2C businesses, varied industries and sectors, including a previous role with Monash University.

# Our experience

## Similar projects - festivals

### Australian Open 2015

The Australian Open is a major tennis Grand Slam held annually in Melbourne, and had 703,899 visitors in 2015. Andiamo Projects solely project managed a new development area for the Australian Open showcasing a food brand and bringing together a variety of concepts to showcase food cooking demos, tastings and consumer sales from concept through to delivery in a tight timeframe.

### MasterChef/Holden Pop-up Experience 2018

Andiamo Projects managed the MasterChef / Holden Pop-up Experience which brought a taste of the MasterChef kitchen to people across Australia. Touring nationally across Sydney, Melbourne, Brisbane, Adelaide and Perth the pop-up served free samples from the MasterChef food truck with recipes straight from the show along with experiential activations.

### Parks Victoria – Statewide conference 2016 & State-wide Roadshow 2017, 2018 and 2019

This government organisation engaged Andiamo Projects to deliver their corporate conference in multiple locations around Victoria, managing various stakeholders and delivering to set KPIs

# Our experience

## Similar projects - festivals

### Regional Flavours 2019 and 2020

Regional Flavours is a large food and wine festival held in Brisbane, designed for the Queensland community and attracting 85,000 visitors. This event is run by the Brisbane government who have engaged Andiamo Projects as a consultant to pull the programming for this festival together.

### Margaret River Gourmet Escape 2015, 2016, 2017, 2018 and 2019

Margaret River Gourmet Escape is a luxury food and wine festival that is highly regarded in the event industry. This government funded event holds more than 50 events concurrently in unique locations throughout the iconic Margaret River region along with a festival hub which is a hub of producers, market stalls and programming on stage. This event attracts visitors from all over the world.

### Taste of Melbourne 2015, 2017, Taste of Sydney 2016

Taste of Melbourne and Sydney is a food and wine festival of gourmet restaurants, market stalls, masterclasses and cooking demos on stage attracting approximately 20,000 visitors.

### Tourism Australia - Restaurant Australia campaign and Australia Tourism Exchange

The Australian Tourism Exchange (ATE) is Australia's largest annual travel and tourism business-to-business event with international visitors from over 30 countries. Andiamo Projects was engaged to manage the Tourism Australia campaign Restaurant Australia activation at the ATE, including overseeing the design and build of the activations, programming, engaging food and beverage activation components and manage the production from end-to-end.

# Our experience

## Similar projects - festivals

### Melbourne Food and Wine Festival 2015

MFWF sees thousands of food and wine visitors indulge in more than 200 events across Melbourne and regional Victoria. In 2015, Andiamo Projects was the site operations coordinator for various iconic events including:

Langham MasterClass – outdoor masterclass with Paul Wilson and George Calombaris.

World's Longest Lunch presented by Bank of Melbourne: 530-metre-long table with 1,500 guests dining on a three course meal created by Shane Delia & Adriano Zumbo.

Breakfast Around the Tan Presented by Diabetes Australia: Progressive breakfast around the Botanical Gardens with family friendly activities.

### Good Food and Wine Show 2012, 2013 and 2014

The Good Food & Wine Show is Australia's largest and most awarded consumer and food and wine exhibition with over 110,000 visitors in Melbourne, Sydney, Perth and Brisbane. We have experience in project management of 10 GFWS's around Australia attracting approx. 30,000 visitors to each event.

**We appreciate your time**

# Thank you

If you would like to find out more about how we could work together to deliver this important event, please contact us:

[Redacted]

Managing Director, Upstride Agency

[Redacted]

South Melbourne

[Redacted]

[upstride.com.au](http://upstride.com.au)

---

**From:** [REDACTED]  
**Sent:** Thursday, May 28, 2020 4:10:35 PM  
**To:** Katherine Copsey - Councillor <[Katherine.Copsey@portphillip.vic.gov.au](mailto:Katherine.Copsey@portphillip.vic.gov.au)>  
**Subject:** Stop using leaf blowers

**[External Email] Please be cautious before clicking on any links or attachments.**

Dear Katherine,

Diversity is encouraging citizens to put forward ideas to help the COPP budget.

We would like the council or its agents to stop using leaf blowers. Their use is detrimental to the environment in many ways. They use fossil fuels. They create serious noise pollution. Their operators wear masks, but people in the street are not protected from the dust they send into the air. They are clearly not good for the health of their operators. If the same people were using rakes they would improve their fitness.

Their use should be banned everywhere. Perhaps Port Phillip could provide a lead to other municipalities to help them clean up their environmental acts.

If these machines were banned from Port Phillip its citizens may start to believe that the Council caress about the environment. As it is, the leaf blowers stridently proclaim that this idea is just hollow PR.

We write to you because you represent the Greens in our ward. We encourage you to share our concerns with Council.

[REDACTED]



CBR-018

----- Forwarded message -----

From: [REDACTED]  
Date: Fri, 5 Jun 2020 at 11:49 am  
Subject: Council problems  
To: <[hello@marcuspearl.com](mailto:hello@marcuspearl.com)>

Dear Marcus Thank you for your recent communications. I am no great fan of our council for a variety of reasons. However in response to your recent letter I have no sympathy with your problems but given your crisis I do have some solutions few of which will be palatable. I cannot understand how the Council has managed to generate a 40 million debt when, unlike many, it has a predictable annual income and the capacity to increase it largely at will. My solutions follow —

- 1/ Lay off half the staff, put them on the Job Keeper scheme.
- 2/ Reduce services to the basic minimum, that his keep the streets clean and the parks in order.
- 3/ Divest yourselves of Council owned property NOT essential to basic services.
- 4/ Refuse to pay the landfill levy or any other government levy until good times return.
- 5/ Terminate all contracts/ associations with external consultants and demand more from your in house specialists and department heads
- 6/ Gradually move out of the welfare sector, this is not for local councils, leave it to the State and Commonwealth governments and the charities.
- 7/ Cut the councillors expenses by 50%.
- 8/ The list of economies you recently submitted claiming savings of 17 million was impressive but we need to see a progress report in 6 months with evidence of significant achievement.
- 9/ Consider rate reductions in these difficult times. When are the next property valuations to be undertaken and what rate increase might we expect. Keep in mind these valuations should accurately reflect the current real estate values.
- 10/ Please sack, or if this is not possible, re deploy the 4 hi vis employees walking about our streets spraying telegraph posts and rubbing them with rags. This is to the most dimwitted useless method of containing the spread of virus and at what cost to ratepayers. Better to print a few notices advising to wash their hands and post them in prominent places around the Municipality.
- 11/ Finally I would be opposed to councillors transferring sole decision making power to the mayor. Hopefully this is no longer contemplated.

Best of luck with your council work!! [REDACTED]

--



Free legal advice | Law reform | Community legal education | Community development | Outreach lawyers

Katherine Copsey  
Councillor – Lake Ward  
City of Port Phillip

By email: [Katherine.Copsey@portphillip.vic.gov.au](mailto:Katherine.Copsey@portphillip.vic.gov.au)

29 May 2020

Dear Councillor

**Budget proposal regarding Southport Community Legal Service and opportunity to reconsider funding models for community legal services in the City of Port Phillip**

We are concerned to learn of the proposal to discontinue funding for Southport Community Legal Service (Southport) and the impact potential closure may have on the service's current clients and their catchment community.

We confirm that without additional funding, St Kilda Legal Service (SKLS) would not have the capacity to expand our current catchment from as early as July 2020 to provide legal services to residents in Southport's current catchment of Port Melbourne, South Melbourne, Middle Park, Albert Park, Southbank and Fisherman's Bend.

We believe, however, this is an important opportunity for council to consider how it allocates funding towards community legal service delivery. We believe City of Port Phillip funding and support for community legal service delivery should:

- benefit all residents of the City of Port Phillip and not just residents within the Southport catchment suburbs of Port Melbourne, South Melbourne, Middle Park, Albert Park, Southbank and Fisherman's Bend
- be allocated through an equitable and transparent process that ensures council funding for legal services delivers maximum value for the community as a whole and targets those with high legal need.

We note the City of Port Phillip does not currently provide SKLS with funding for legal service delivery or other resourcing support. While it is highly unusual for a council to provide core funding, many councils across Victoria provide substantial funding and other support to community legal services such as ours, as they understand how council support can stretch our limited resources further to assist more people in need.



Free legal advice | Law reform | Community legal education | Community development | Outreach lawyers

SKLS has provided legal services and assistance to the local community since 1973. We are an accredited community legal service under the Community of Legal Centres Australia National Accreditation Scheme and we receive our core funding through state and federal government, as administered by Victoria Legal Aid. We are also the only specialist provider of legal services for LGBTIQ+ communities in Victoria through our LGBTIQ Legal Service, established in 2018 in partnership with Thorne Harbour Health.

We provide free legal services to residents in the City of Stonnington and the City of Bayside, as well as some suburbs in the City of Port Phillip, specifically: St Kilda, Elwood, Ripponlea, Elsternwick and Balaclava. Last year, we assisted just under 500 residents of these suburbs with legal issues including family violence, family law, discrimination, personal safety, neighbourhood disputes, debt, consumer complaints and unpaid wages.

We target our services to communities with high legal need and we work in close partnership with a number of highly-respected community services operating in the City of Port Phillip including the Port Phillip Community Group, Sacred Heart Mission, Star Health, Launch Housing, Uniting Care 101 Engagement Hub, Gatehouse and the Salvation Army Family Violence program.

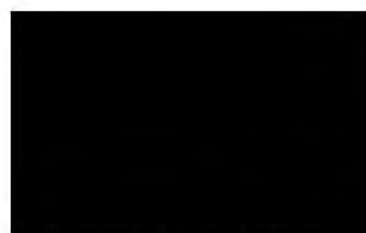
We welcome any request by council to work together to address the issue of access to justice and financially sustainable models of legal service delivery for the benefit of all communities in the City of Port Phillip, particularly those experiencing highest legal need.

Our Executive Officer and Principal Lawyer [REDACTED] is available to discuss this matter further on [REDACTED] or [REDACTED] or by email to [REDACTED]. You may also reach [REDACTED] as President of the St Kilda Legal Service Board at [REDACTED]

Yours faithfully,



President  
St Kilda Legal Service Inc.



Executive Officer  
St Kilda Legal Service Inc.

**CBR-020**

**From:** [REDACTED]  
**Sent:** Thursday, June 4, 2020 9:41:39 PM  
**To:** Peter Smith <[Peter.Smith@portphillip.vic.gov.au](mailto:Peter.Smith@portphillip.vic.gov.au)>  
**Cc:** Andrew Bond - Councillor <[Andrew.Bond@portphillip.vic.gov.au](mailto:Andrew.Bond@portphillip.vic.gov.au)>; David Brand - Councillor <[David.Brand@portphillip.vic.gov.au](mailto:David.Brand@portphillip.vic.gov.au)>; Katherine Copsey - Councillor <[Katherine.Copsey@portphillip.vic.gov.au](mailto:Katherine.Copsey@portphillip.vic.gov.au)>  
**Subject:** Re: TOILETS IN FITZROY STREET/ WEST ST KILDA

**[External Email] Please be cautious before clicking on any links or attachments.**

Please note photos attached.

On 4 Jun 2020, at 9:32 pm, [REDACTED] wrote:

Hope you are making it through the strange times in which we live.

We have recently been made aware of resident concerns about toilets in the Fitzroy Street/ West St Kilda area. In particular:

- 1) proposed new toilet in Fitzroy Street;
- 2) the look and condition of the toilet block at the end of Cowderoy Street in the nature strip on Beaconsfield Parade; and
- 3) the 'public' toilet which was part of the Metropol development.

#### **Proposed new toilet in Fitzroy Street**

We note in the recent This Week in St Kilda that, if the 'proposed budget cuts go ahead, the long-promised public toilet in Fitzroy Street will be shelved until 22/23 at the earliest. The \$240K previously set aside for the 'portable/temporary amenity' on Fitzroy is to be ditched as part of a \$16M COVID-19 budget saving plan'.

As you know, there is already a lack of public toilet facilities in Fitzroy Street. A further delay will aggravate the problem.

#### **Toilet block in the Beaconsfield nature strip at the end of Cowderoy Street**

We attach a series of recent photos which I think explain the concern. The toilets are an ugly blight on the landscape for users at the West Beach end of the waterfront as well as the thousands of passersby who travel along Beaconsfield Parade each day. The toilets are also poorly lighted at night.

As can be seen from the photos, the internal facilities are functional but quite run down. Most people say they are not game to use these toilets.

#### **Public toilet in the Metropol**

Toilets at the Metropol development were closed to the public in mid 2016 due to 'safety issues', yet access remained for bar operators and staff who held keys. The following year the toilets were made accessible to bar patrons, but remained, and to this date still remain, closed to the public in clear breach of the initial planning permit.

Given the likely delay in providing other toilets in Fitzroy Street, it seems critical to again provide these toilets to the public. Reinstating these toilets to operate in alignment with

planning permits would not affect Council budget as we understand that both were to be run, cleaned and maintained at the operators' expense as per their planning permits.

We understand that there will be constraints on Council priorities in the Covid/ post Covid world. However, public toilets are a somewhat basic requirement in a civilized environment. The recent Covid lockdown has brought more people out walking in the streets and has highlighted people's concerns with cleanliness. Thus, there is a focus on the availability, cleanliness and attractiveness of toilet facilities in the area.

We would like to know what Council intends to do to address these priority concerns of our community.

Cheers,

██████████

*President, West St Kilda Residents Association*







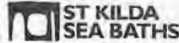








Donovans



STKILDANENLIES



Monday, June 15, 2020

Peter Smith  
Chief Executive Officer  
City of Port Phillip  
St Kilda Town Hall  
99a Carlisle Street  
St Kilda, Victoria 3182

Via email: [Peter.Smith@portphillip.vic.gov.au](mailto:Peter.Smith@portphillip.vic.gov.au)  
CC: [Emma.Murdoch@portphillip.vic.gov.au](mailto:Emma.Murdoch@portphillip.vic.gov.au)

**RE: Petition - Rates and Lease Relief, St Kilda Beach Traders, St Kilda Foreshore**

Dear Peter,

We write to you in petition of the urgent removal of all rates and lease costs for the St Kilda Beach Traders for 2020 with review for 2021.

On 2 June 2020, many of us participated in the Web seminar: City of Port Phillip Economic Stimulus & Business Forum.

We commend Council of holding this forum however there was limited new information relating to the immediate and longer-term survival of businesses within the City.

We are aware of the current \$2.95m Port Phillip Emergency Relief Package which is rates deferral and rent waivers for April to June for Council tenants. This petition seeks further relief and outlines the reasons for it.

You will be aware that the St Kilda Beach Businesses are significantly reliant upon tourism.

Much of the foreshore trader's revenue is derived from interstate and international tourism.

Year ending September 2019, St Kilda had 2.0 million visitors, an increase of 13%.

1.1 million domestic overnight and 900,000 International visitors.

These visitors are now gone, and it is expected that (particularly) international visitation will not occur at all in 2020 and be significantly impacted throughout a large portion of 2021.

In 2017-18, tourism was estimated to be worth \$16.7 billion to Melbourne's economy (in direct and indirect Gross Regional Product), representing 5.0 per cent of Melbourne's economy.

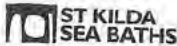
Tourism generated employment of approximately 130,000 people or 5.6 per cent of total employment (direct and indirect jobs).

Domestic overnight expenditure in Melbourne in the year ending December 2019 was estimated to be \$9.5 billion (+12.8 per cent year-on-year), with visitors spending an average of \$310 per night and \$833 per visitor.

1 COMMERCIAL IN CONFIDENCE



Donovans



STKILDANENUES



Why support the St Kilda Foreshore businesses with relief? *The City of Port Phillip tourism recovery will largely be driven by the St Kilda Foreshore and its businesses.*

The visitor statistics are clear - The St Kilda Pier, (in redevelopment) and foreshore are the major visitation drawcards for the City of Port Phillip.

Sustaining foreshore businesses will drive a significant and ongoing return to the City of Port Phillip.

The surrounding areas rightly have had the large portion of Council funding (Fitzroy Street and Acland Street) to reinvigorate these failing precincts. It is our view that it is time to consider relief for the foreshore precinct to ensure it can drive a tourism recovery in the future.

This recovery will provide the major economic stimulus to the surrounding precincts. This recovery also drives event permit fees for Council from private event organisers and Council car park revenues.

We seek City of Port Phillip's support to provide urgent rates and lease rental relief for the St Kilda Foreshore businesses.

We request:

1. All foreshore businesses Council Rates be waived from 1 January 2020 to 31 December 2020; and reviewed on 1 December 2020 to determine if a waiver for 2021 should be extended.
2. All foreshore businesses Council lease rentals be waived from 1 January 2020 to 31 December 2020; and reviewed on 1 December 2020 to determine if a waiver for 2021 should be extended. This is in line with the Victorian rent relief for similar business on crown leases managed by DELWP

We would very much appreciate if we can be kept informed on the additional relief process, timing, and steps, by City of Port Phillip so we are able to participate.

St Kilda foreshore is not asking for grants, we are asking that our current rates and lease costs be removed for 2020. We have provided millions of dollars in Council revenue, over many years.

Economic times were tough prior to the pandemic and we seek your support with this relief so we are able to re-build and drive the recovery that St Kilda and the City of Port Phillip so desperately requires.

Thank you for your consideration.

[Redacted] - Luna Park [Redacted]

[Redacted] - Beachcomber [Redacted]

[Redacted] - Stokehouse [Redacted]

[Redacted] - St Kilda Sea Baths [Redacted]

[Redacted] -Donovans Restaurant [Redacted]

[Redacted] - Captain Baxter [Redacted]

2 COMMERCIAL IN CONFIDENCE



30/06/2020

Dear Anita,

Further to your discussions with [REDACTED] earlier today, the Fitzroy Street Business association wishes for the City of Port Phillip to retain funding for Renew Australia.

The FSBA would be willing to contribute the outstanding \$75000 to bring Renew to fruition. We strongly believe that Renew is the most promising initiative to come from Placemaking.

Covid-19 has seen problems compounded on our street, where we have seen vacancy rates rise along with an intimidating environment for locals and visitors alike. Renew supporting a Fitzroy Street Investment Strategy, we believe shall offer a long lasting benefit for the area.

Regards, [REDACTED]

[REDACTED]  
FSBA President

**CBR-023**

**From:** [REDACTED]  
**Sent:** Sunday, 28 June 2020 5:56 PM  
**To:** Tim Baxter - Deputy Mayor <[Tim.Baxter@portphillip.vic.gov.au](mailto:Tim.Baxter@portphillip.vic.gov.au)>; Louise Crawford - Councillor <[Louise.Crawford@portphillip.vic.gov.au](mailto:Louise.Crawford@portphillip.vic.gov.au)>; Dick Gross - Councillor <[Dick.Gross@portphillip.vic.gov.au](mailto:Dick.Gross@portphillip.vic.gov.au)>  
**Cc:** Helpdesk - Placemaking <[placemaking@portphillip.vic.gov.au](mailto:placemaking@portphillip.vic.gov.au)>  
**Subject:** Re: City of Port Phillip Economic Stimulus & Survival Business Forum Follow-up

**[External Email] Please be cautious before clicking on any links or attachments.**

Dear all,

Hope the council's team are all managing okay through covid-19, and thanks for your thanks for your service.

This feedback is offered in response to the recent budget that was announced, as both a local resident/rate payer and business owner. For what its worth, my comments and suggestions below. Below is not intended to be complaint per se, however realise you are key voices for Canal Ward residents, and also for businesses/industry that are operating across the City of Port Phillip.

#### **Ward disproportionate spending and services - CANAL WARD**

City of Port Phillip representative (off record) that the level of spending has been disproportionate between wards and the designated areas within the wards over a long period of time, and it is clearly showing when you drive through and live in different areas within City of Port Phillip.

1. Disclosure - can the council ensure a summary breakdown of services and spending for A) wards and B) regions within the wards so it is transparent to residents of the budgeted services allocated geographically?
2. St Kilda Triangle - this project has been sapping significant funds from local residents and rate payers over the years. I am just not sure how City of Port Phillip can justify having spent (wasted) nearly \$10-20M over the last 15 years (consultant fees, design studies, consultations, master planning, other costs etc etc) with nothing achieved. This expense has been at the detriment of those that live in the ward, as it reduces the much needed services, capital improvements for local residents (not tourists). City of Port Phillip should stop investing in projects like this that are heavily tourism focused unless its fully funded by State/Commonwealth funded, as it can become too reliant on tourist dollars and post card image. Instead, it could take some inspiration from other areas like Fitzroy/Brunswick who have created strips and culture of style around the wards, rather than chemist warehouse strips and eyesaws like Carlise Street.
3. Higher levels of services, expenditure and budget allocation (LAKE WARD) - Albert Park, Middle Park, for footpaths, landscaping, trees and Port phillip bay boulevard, and also St Kilda Triangle (Luna Park, Acland St)
4. Lower levels of expenditure and services (CANAL WARD) - Balaclava and East St Kilda. The streets scapes of this area are particularly underserved and badly managed compared to above mentioned areas. When will the council reallocate much deserved services and expenditure do Balaclava and East St Kilda areas within the CANAL WARD, particularly like streets such as Argyle Street, Inkerman and Alma?

#### **Victorian Government Local Parks Program**

5. Victoria Government are opening applications for improving parks 1 Jul 2020 - <https://www.environment.vic.gov.au/suburban-parks/creating-new-parkland-across-victoria/local-parks> Below are 2 parks we hope that Council can seek funding, and make some significant improvements. Are City of Port Phillip open to making a submission for State Government funding the following improvements?

- a) Jim Duggan Reserve - This park's play equipment had a minor upgrade in the last few years and was very poorly done compared to other parks that have been revitalised within the City of Port Phillip. This park is adjacent and heavily used by all local residents, and neighbouring child care, Betty Community Centre, DHHS social housing. This park is prime for being revitalised.
- b) Alma Park - Perimeter fence - are City of Port Phillip able to install a well designed perimeter fence around the entire park boundaries, to provide a sanctuary within the park itself, and also serves the purposes of keeping dogs/animals safe within enclosed areas of Alma Park similar below to [Victoria Gardens on High Street](#). Sadly, we saw 2 dogs get run over the other day near Alma Park as there was no fence, and they panicked and ran onto the main road, and creating hazard for traffic and pedestrians.



**Strategic Direction 2: We are connected and it's easy to move around**

- Bike Infrastructure Program (\$430,000 reduction) – Program reduced to design and consultation in 2020/21. The 2020/21 program includes the construction budget for the Garden City Bike Path which was deferred from 2019/20.
  - Footpath Renewal Program (\$307,000 reduction) – Program reduced to high priorities. Increased in future years to ensure our existing asset base is maintained.
6. Several concerns have been formally submitted to Council in previous years on the poor state of condition of landscaping and footpaths around CANAL ward. What are council doing about this?

**Strategic Direction 4: We are growing and keeping our character**

- Palais Theatre & Luna Park Precinct Revitalisation - in partnership with the Victorian Government, a project to revitalise and reshape this precinct to create a safer, more pedestrian-friendly, attractive and usable space. The project was previously part of the Public Space Security Improvements Program. (\$2.9 million to complete construction)
- St Kilda Foreshore Infrastructure Upgrades (between Donovans and Marina Reserve) - Delivery of foreshore infrastructure including path and crossover upgrades, seawall renewal, vehicle intrusion control, lighting, vegetation and shade upgrades. (\$100,000 for design)

**Strategic Direction 6: Our commitment to you**

- Business Enablement and Innovation Fund – this program has been removed from the Council Plan. These initiatives will be prioritised through the Customer Experience Program and existing operational budgets.
7. City of Port Phillip support for business enablement, innovation, attracting industry and commercial businesses, and providing ongoing support to businesses beyond just hospitality/tourism/creative, is relatively poor compared to other councils across Melbourne (City of Melbourne, City of Stonnington, City of Yarra, Bayside etc). Once again, it relies too heavily on the tourism/hospitality dollar, there is an

opportunity to attract and create a thriving business services hub on the doorsteps of Melbourne, as the next Silicon Valley etc.

8. Economic Stimulus and survival business initiative - seems to be heavily focused on arts, hospitality and retail sector, and has very little effort or support for other services businesses which are significant employers and contributors to the local economy. Grants for businesses to set up in the local area, employing more people, setting up new tech hubs or HQ could be great focus and opportunity particularly around South Melbourne and Fishermans Bend precincts.
9. Small Business Victoria - Small business victoria has been offering excellent support for industry and business, in collaboration with many Councils (City of Melbourne, and few others) across Metro Melbourne. Sadly, for whatever reason, City of Port Phillip has done some collaboration with Small Business Victoria but nothing like what other councils are doing across Melbourne and Victoria. Might be an opportunity to ramp this collaboration up.

Kind Regards,

██████

CBR-036

Submission to Council re Updated Council Plan 2017-27 and Draft Budget 2020/21

To Port Phillip Council, planning and budget departments.

I have lived in the City of Port Phillip for forty years, first in Albert Park and now in Port Melbourne. While I am aware that Covid will have placed strains upon Council budget, I would ask you not to reduce any of the services and initiatives that make Port Phillip such a good community, such a good place to live.

Port Phillip has always been an inclusive and caring community.

- Public housing. Port Phillip has had a proud history of supporting public housing through the Housing Association, Housing First. Low cost accommodation has been well integrated into the community. In this time of economic downturn, when homelessness has become a crisis, it is vital that this kind of initiative is continued and developed. I don't wish to live in some kind of gated suburb, accessible only to the affluent, ignoring people sleeping rough, or just having them moved elsewhere. I want to feel part of a community that acknowledges such social problems, and addresses them. Council should work with other levels of government, housing providers, and developers to provide high quality social housing.
- I am pleased that CoPP has supported the marriage equality in the referendum, and supports the rights of LGBTQI citizens.
- Public services, such as child care and legal aid. It is vital that these things are available to all, not just those who can pay.

Parks and public spaces.

I am lucky enough to live on a park, Garden City Reserve, which is beautifully maintained by Council. I would argue for an increase in tree planting and development of public green spaces.

- Studies suggest the significant effects of greenery on the sense of well-being of residents.
- Some value tackling Climate Change, addressing the heat island effect of dense urban areas.
- Most importantly, open public spaces are available to all. Our park is very well used by people of all ages – the local school, families, retirees – and all economic strata. This is fair and equitable. Most significantly it creates a great sense of community. All kinds of different people get to know one another, look out for one another, and this is enormously valuable.



Relatedly, it would be good if bike paths were developed further. Traffic and parking is a problem in Port Phillip, and rather than seeking more parking areas, a better solution could be to reduce the number of cars on the roads, giving better access to bikes and pedestrians. There has been an increase of bike use during the pandemic and it would be good if that could be encouraged as we move forward.

#### Climate Change

All levels of responsible government must commit to tackling Climate Change. As the council declared, we are in a Climate Emergency. Everything should be done to reduce pollution, increase sustainability, care for the environment. Investment in renewables is a valuable step. Plus, renewables may provide the cheapest energy, thus being a good investment for ratepayers.

#### The St Kilda Ecocentre

This is a bit of a jewel in St Kilda, doing great environmental work, educational work, and Council should support them.

#### Arts, Music, Theatre

Port Phillip has been rich in arts, music and theatre. It's part of what gives our community colour and character, and attracts tourism and revenue to the area. In this time, when the arts, music, theatre industries are being devastated and left without support, Council should consider how best to support our local artists, musicians and theatres.

Sincerely,

██

████████████████████

Port Melbourne

CBR-037

From [REDACTED]

Sent: Wednesday, 8 July 2020 8:00 AM

To: Helpdesk - Council Plan & Budget <[helpdeskabpp@portphillip.vic.gov.au](mailto:helpdeskabpp@portphillip.vic.gov.au)>

Subject: Keep funding the EcoCentre in the COPP budget

**[External Email] Please be cautious before clicking on any links or attachments.**

Dear Councillors, CEO,

Thank you for supporting the EcoCentre and their essential education, research and volunteering programs, especially in a world experiencing climate change.

The EcoCentre is important to me because it supports our local community with fun and engaging educational activities and information to build knowledge and expertise - from the youngest to the oldest in our community - in sustainable living, climate change science, water and energy saving and local, indigenous environment, ecology and flora and fauna. The treasures we have on our doorstep! I've personally benefitted through connecting with like minds, building my knowledge and capacity to effect positive and meaningful change in my own life. I've also been able to help educate friends and neighbours unfamiliar with sustainability concepts, thanks to all the materials the EcoCentre makes available about its school programmes, planting bees, shell surveys, Baykeeper research projects into Port Phillip Bay health, microplastics, recycling, composting, sustainable building and renovating.

I've enjoyed attending and participating in Port Phillip EcoCentre community events, including film nights, festivals, open house days, AGMs, information sessions, workshops etc.

The EcoCentre has connected me with Boon Wurrung people, their knowledge and culture. It has connected me with myriad local community groups doing wonderful, creative and practical things for our environment, including Bili Nursery (formerly SKINC), Veg Out, Friends of Westgate Park, and the Port Phillip Bay wildlife research group.

The schools programmes run by the EcoCentre's education team are world class, enthusing, informing and empowering the next generations. What I've seen first hand at schools and even kindergartens and child care centres in my neighborhood is joyful and deeply inspiring.

The EcoCentre has outgrown its tiny EcoHouse, and requires a larger centre to continue to fully support the growing demand for education in and connection to sustainability and environmental concepts and practice.

Please continue to prioritise the EcoCentre programs and redevelopment in this and future budgets.

Sincerely,

[REDACTED]

Sent from my iPhone

CBR-043

I wish to advise that the Assist Desk staff at the Port Melbourne Town are an invaluable source of information and help to residents. In particular the elderly and infirm. Many members of the community are unable to use the internet and/or internet banking. The service provided by these friendly and helpful Council staff is one of the only face to face interactions that ratepayers have with our Council. This is a very important aspect of Local Government.

**CBR-064**

**Submission Re Port Phillip Budget 2020**

(Commemorating [REDACTED]. Died 3/7/2020)

[REDACTED]  
0407 876 991

6 July 2020.

**Summary**

This submission supports the Port Phillip Bicycle Users Group on the COPP Budget 2020.

The BUG submission from [REDACTED] on 14 June recommended:

- Council apply for post COVID grants to accelerate the protected bike lane strategy in the Integrated Transport Strategy
- Council maintain the cycling infrastructure budget
- Council build 'pop-up bike lanes' with temporary infrastructure along Kerford Rd., St Kilda Rd, Brighton Rd, Beaconsfield Rd and Marine Pde and remove parking from Chapel St.

This submission adds the following supporting information:

1. Bikespot Top 10 Unsafe Bike spots
2. Statement from 100 leading doctors and transport experts
3. Transport Accident Commission-funded study on bicycle safety
4. The relevance of Bike Riding in Council's Policies.

**1. Bikespot Top 10 Unsafe Bike spots**

Bikespot is a collaboration between CrowdSpot and the Amy Gillet Foundation, a bike-safety organisation set up by the family and friends of the professional Australian cyclist who was killed while riding in Germany in 2005. It had an interactive mapping project calling on Victorians to report roads and bike paths where they feel unsafe that finished in May 2020. Nearly 6,000 cyclists and drivers participated by adding 'pins' to highlight more than 7000 'Safe' and 'Unsafe' locations in the state. [REDACTED], CrowdSpot Director said,

*It's clear from the results that the vast majority of people (cyclists and drivers alike) want a physically separated and connected cycling network. It is the best method to increase safety and importantly everyone's willingness to ride more often. It is even better if these infrastructure improvements are used in combination with slower moving vehicle traffic and outside car dooring zones as these issues are the cause for most stress.*

The top 10 Unsafe Spots around Melbourne include two in Port Phillip, St. Kilda Junction, (unsafe bike lane) and St. Kilda Road (unsafe bike lane). Chapel Street was the worst, because it is narrow with car doorings and poor road surface. St Kilda Rd was the second worst and St Kilda Junction was the seventh worst.

By contrast, one of the safest spots identified is the small stretch of separated bike lane in St Kilda Rd opposite the NGV. The Top 10 Safe Spots are dominated by separated bike lanes, off-road paths and wide bike lanes. The safest spot was the separated bike lane in the Footscray Rd Trail.

## **2. Letter from Doctors, public health and transport researchers**

Governments have been sent a letter from 100 leading public health and transport researchers to enable safe walking and cycling during the Covid-19 pandemic and into the future. Many Port Phillip doctors including [REDACTED] [REDACTED] [REDACTED] have endorsed this letter for action by our Council.

The letter (attached) says that Australia is lagging behind the rest of the world. It says:

*There are numerous examples across the world of the rapid roll-out of social distancing infrastructure to support cycling and walking during the COVID-19 pandemic. Measures have included reduced speed limits, widened footpaths, emergency cycle lanes, streets closed to motor traffic or removal of manual pedestrian buttons. New Zealand have recently announced substantial funding to support the roll-out of interim measures to make it safer and easier for people walking and cycling, and the UK have given local authorities the power to quickly and easily make roads car-free, widen footpaths, or install temporary cycle lanes. As yet, we have not seen a similar response in Australia, despite the urgent need.*

*Thus, we call on decision makers to take urgent steps to enhance walking and cycling during the pandemic through these or other measures to ensure that safe physical activity and social distancing can occur on our streets now and when the economy is reopened.*

## **3. Transport Accident Commission-funded study on bicycle safety**

Research by [REDACTED] has found that on-road marked bicycle lanes are not the optimal solution to keeping cyclists safe. The study published in the journal *Accident Analysis and Prevention* (11 April 2019) shows that marked on-road bicycle lanes and parked cars reduced the distance that motorists provide when passing cyclists.

In the largest study of its kind in the world, data was collected on 60 cyclists in Melbourne who rode their bicycles with a custom device (the 'MetreBox') installed to quantify the distance that motor vehicle drivers provide when passing cyclists.

More than 18,500 vehicle passing events from 422 trips were recorded. One in every 17 passing events (n=1085) came within one metre of the travelling cyclist and, alarmingly, 124 passing events came within less than 60cm. In higher speed zones, greater than 60km/h, almost one in every three (n=293) passing events was a ‘close’ pass (<150cm).

“We know that vehicles driving closely to cyclists increases how unsafe people feel when riding bikes and acts as a strong barrier to increasing cycling participation,” said ██████████, lead author and Monash University’s Deputy Head of [Prehospital, Emergency and Trauma Research](#), and President of the Australasian Injury Prevention Network.

The research findings show that on-road bicycle lanes, particularly alongside parked cars, are not the optimal solution for protecting people who ride bikes. ██████████ said in order to improve safety and increase cycling participation, it is clear that far greater investment is needed in providing infrastructure that separates cyclists from motor vehicles by a physical barrier.

Previous studies by ██████████ showed the number of Victorian cyclists being admitted to hospital with serious trauma from road crashes has more than doubled in the past 10 years, and that 22% of all on-road bicycle crashes occur while the cyclist is riding in an on-road bicycle lane.

#### **4. The relevance of Bike Riding in Council’s Policies.**

The Port Phillip Council Plan has ‘Directions’ where bike infrastructure is pivotal.

- Direction 2 We are connected and its easy to move around. The main philosophy is that streets and places are designed for people. This will be achieved by *inter alia* prioritising bike riding.
- Direction 3 A city with lower carbon emissions. More journeys by bicycle is a significant way to lower greenhouse gas emissions. However unless the city urgently delivers safe bike infrastructure, this aim will remain in the realm of promises not action.
- Direction 5 A prosperous city that connects and grows Business. Cycling has taken off in the time of the pandemic as people seek safe distanced transport suitable to all ages. We need to encourage this trend as it not only provides safe transport but means that business in our local bike shops has boomed, not to mention coffee and croissant consumption in our local cafes!

Furthermore in September 2019 the City of Port Phillip declared a Climate Emergency which commits the Council to declare ‘urgent action’ ‘to drastically reduce warming emissions in Australia. The City will also “consider the impact of Climate Change when planning and decision making”.



**CBR-065**

**From:** [REDACTED]  
**Sent:** Tuesday, 7 July 2020 3:55 PM  
**To:** Helpdesk - Council Plan & Budget <[helpdeskabpp@portphillip.vic.gov.au](mailto:helpdeskabpp@portphillip.vic.gov.au)>  
**Subject:** Updated Council Plan 2017-27 and Draft Budget 2020/21

**[External Email] Please be cautious before clicking on any links or attachments.**

To Council Planning and Performance at Port Phillip City Council,

My name is [REDACTED], and I have lived in the City of Port Phillip since 1982. I have lived in St. Kilda, Elwood, and currently live in Port Melbourne.

This email is a submission to express what I believe is important in the 2020/21 Budget for Port Phillip City Council.

1. It is important to continue to invest in vital public services. The services provided by council are important, probably more during this time of Covid19 than in any other time. Some of the vital services provided by Council that must be continued include childcare; Maternal & Child Health services; cycling infrastructure; libraries; parks and public spaces; housing; waste and rubbish management; and responding to the challenges of the Climate emergency.
2. Childcare services should be provided by Council for people living in the city. Publicly owned and affordable child care is a vital service. Council should increase the amount of child care services provided; the council run child care services must be of high quality, and affordable.
3. The Maternal & Child Health services are a vital service to families in the community, and must be continued.
4. We need better facilities for bicycle riders. More people will cycle if they feel it is safe to do so, and they will feel it is safe if there are separate bike paths and bike lanes. Since the restrictions resulting from Covid 19 there has been a significant increase in people cycling, and there needs to be better facilities for these increased numbers of cyclists. The best facilities for cyclists are separate bike paths, where there are no risks from cars, and no risks to pedestrians. I would like to see separate bike paths all along the sea shore, including along St. Kilda beach. Having cyclists and pedestrians together, as along the St Kilda beach, and along South bank of the Yarra, does not work. Pedestrians and cyclists get irritated by each other. It would be better to have a separate bike path.

We also need separate bike paths and bike lanes in other parts of the city. The bike lanes that exist are good, but we need more of them. We also need more bike parking racks.



5. Libraries are a great community resource and Council must continue to fund these great resources.

6. Parks and public spaces are a great resource in the city. We need more of them. Council should consider where it is possible to close roads and convert them to bike paths, parks and open spaces. Council must continue to fund tree planting and care for trees and parks in the city. These are vital public places; particularly during Covid 19 when many people are working from home or not working, they are using parks and public spaces. Parks and public spaces are good for both mental and physical health of residents and visitors to the city.

7. Covid 19 has hit homeless people hard, and Council should work with other levels of government, housing providers and developers to provide high-quality social housing to help people who need it most.

8. Rubbish and waste management must continue to be funded and managed by Council. As waste management becomes more problematic, Council must investigate further opportunities for recycling, and be innovative in relation to waste management. Residents must be strongly encouraged to dispose of rubbish and waste responsibly.

9. We are living in a Climate emergency. Perhaps some people are more focussed on Covid 19, but we must not forget that Summers are getting hotter, bushfires are getting worse, and that extreme weather events are going to become more frequent. The Climate emergency is continuing. Council must continue to reduce carbon emissions, promote renewable energy, and educate residents about responses to the Climate emergency. Putting solar panels on the roof of the South Melbourne market was an excellent Council initiative, and there should be more investment in renewable energy. Council should investigate putting solar panels on the roofs of all Council owned properties, and providing solar power for all it's facilities

We need to ensure that we continue these essential services in our city, to meet the demands and needs of all residents.

Yours sincerely,

██████████

---

This email was sent by ██████████ via Do Gooder, a website that allows people to contact you regarding issues they consider important. In accordance with web protocol RFC 3834 we have set the FROM field of this email to our generic no-reply address at ██████████ however ██████████ provided an email address ██████████ which we included in the REPLY-TO field.

Please reply to ██████████ at ██████████

To learn more about Do Gooder visit [www.dogooder.co](http://www.dogooder.co)

To learn more about web protocol RFC 3834 visit:  
<https://tools.ietf.org/html/rfc3834>

**CBR-066**

**From:** [REDACTED]  
**Sent:** Monday, 6 July 2020 2:26 PM  
**To:** Helpdesk - Council Plan & Budget <[helpdeskabpp@portphillip.vic.gov.au](mailto:helpdeskabpp@portphillip.vic.gov.au)>  
**Subject:** PPEC

**[External Email] Please be cautious before clicking on any links or attachments.**

I trust you will continue to support the Port Philip Eco Centre. It is such an important and iconic organisations that is part of the public face of the commitment Port Philip has to environmental sustainable practices. I urge you not only to continue to fund this operation, but when possible, to increase the funding so the tthey can extend their activities.

With thanks in anticipation,

[REDACTED]  
(Co-ordinator, St. Kilda Repair Cafe)

**CBR-067**

**From:** [REDACTED]  
**Sent:** Sunday, 5 July 2020 11:31 PM  
**To:** Helpdesk - Council Plan & Budget <[helpdeskabpp@portphillip.vic.gov.au](mailto:helpdeskabpp@portphillip.vic.gov.au)>  
**Subject:** EcoCentre funding

**[External Email] Please be cautious before clicking on any links or attachments.**

To whom it concerns

- *Thank you for supporting the EcoCentre and their essential education, research and volunteering programs, especially in a world experiencing climate change. The EcoCentre is important to me because it helps to educate me about the environment and suggests many ways I can contribute.*
- *Also it has a very helpful repair cafe.*
- *Please continue to prioritise the EcoCentre programs and redevelopment in this and future budgets.*

*Yours sincerely*

[REDACTED]

**CBR-068**

**From:** [REDACTED]  
**Sent:** Sunday, 5 July 2020 2:29 PM  
**To:** Helpdesk - Council Plan & Budget <[helpdeskabpp@portphillip.vic.gov.au](mailto:helpdeskabpp@portphillip.vic.gov.au)>  
**Subject:** Updated Council Plan 2017-27 and Draft Budget 2020/21

**[External Email] Please be cautious before clicking on any links or attachments.**

To Council Planning and Performance at Port Phillip City Council,

My name is [REDACTED] and I live in Balaclava. I've been made aware of the consultation period for the updated Council Plan and Draft Budget for 2020/21.

I would like to make an email submission to express what matters most to me in the 2020/21 Budget for Port Phillip City Council.

Bike path development is very important for these Covid times and beyond. I'd like to see more money put into improving the dangerous intersections that make cycling difficult.

We need more trees planted in streets and parks. These are our insurance against climate change, helping to cool our city.

Low cost housing is essential for our low income residents. I know there is some, but not enough.

As a rate payer I don't think you need to freeze rates. That money is needed to keep our essential services and help develop more services.

We need to ensure that we continue these essential services in our city as we meet the demands of all residents and come back stronger following this global pandemic.

Yours sincerely,

[REDACTED]

CBR-079

July, 2020

To whom it may concern,

I am pleased to have the opportunity to express my support for the Port Phillip Ecocentre. In my role as an environmental educator I have been thoroughly supported by the staff at the Ecocentre. They have provided me with guidance and advice ranging from how to access funding for not for profit groups through to the best methods to disseminate information. The staff have freely shared their information and high - quality resources which I have been able to incorporate into environmental lessons for schools. Members of the centre have also attended and presented at professional development days that I have organised. In my role as an educator I have organised groups to attend presentations at the Ecocentre. I have been impressed by the quality of these and the ability of the staff to pass on key environmental messages in a manner that engages students and encourages them to take community action.

The Port Phillip Ecocentre is an important cog in disseminating key environmental messages to members of the community, including schools. They whole heartedly support other like - minded organisations and encourage community - based actions. I admire the values of this organisation and how the staff lives and breathes these.

Please continue to prioritise the EcoCentre programs and redevelopment in this and future as without continued support there would be a large gap to fill.

Yours sincerely

██████████

**CBR-085**

FROM [REDACTED]

[REDACTED] PORT MELBOURNE 3207

1 - Type of request

Request for information

2 - Request details

why is there no easy way to find anything about the 2% rate rise which you have given ratepayers till 17 July to comment on ?

there is no link here in all this paraphernalia listed here for my attention ..

please send me immediately a link for any RATE COMMENT...

11 - Would you like feedback about this request?

Yes

CBR-093

- *Thank you for supporting the EcoCentre and their essential education, research and volunteering programs, especially in a world experiencing climate change. The EcoCentre is important to me because it continues to champion the sustainability of my local environment and raise awareness of the on-going threats to our planet. Please continue to prioritise the EcoCentre programs and redevelopment in this and future budgets.*



CBR-094

  
Port Melbourne 3207

Victoria

9<sup>th</sup> July 2020

Lord Mayor and Councillors,

City of Port Phillip

GARDEN REMEMBRANCE FUNDING "HAVE YOUR SAY" 2021 BUDGET.

I am led to understand that funding of \$22,000 needed to complete the work on the Remembrance Garden installed by Council in 2018 in the Port Melbourne Railway Reserve was not provided in that year. Requests for inclusion in successive budgets have been unsuccessful and it seems another year will be allowed by council to pass, as funding has again not been included in the draft budget for 2021.

The funding to complete the Garden involves installation of panels or plaques describing social history, military and cultural heritage themes. The importance of the gardens will then be significant to all.

In particular, 2020 represents the 75<sup>th</sup> anniversary of the completion of the second world war. Port Melbourne was the departure point for many of our young men and women who left Australia to help preserve world peace in both of those terrible wars, so this year has particular significance. Many residents of our city did not return or were severely traumatised by their experience. Significance of the military importance of the gardens, along with the other themes form a major part of Port Melbourne and they all deserve recognition.

It is believed that soldiers returning from world war 1 around a hundred years ago, may have introduced Spanish Flu to Australia. The Remembrance garden is an appropriate place to acknowledge the impact that the Wars overall had on our community then and now.

This is a genuine and sincere request for the Council to review the 2021 budget to include funding necessary to complete this important part of our heritage.

sincerely,

, AO

Air Vice Marshal RAAF retd

**CBR-095**

**From:** [REDACTED]  
**Sent:** Thursday, 9 July 2020 12:54 PM  
**To:** Helpdesk - Council Plan & Budget <[helpdeskabpp@portphillip.vic.gov.au](mailto:helpdeskabpp@portphillip.vic.gov.au)>  
**Subject:** EcoCentre budget

**[External Email] Please be cautious before clicking on any links or attachments.**

- *The EcoCentre is important to me because, as a Early Childhood Educator we are all about caring for and respecting the environment, and how we can educate the youth for the future, especially in a world experiencing climate change.*
- *Please continue to prioritise the EcoCentre programs and redevelopment in this and future budgets.*
- *I would also like you to consider the possibility of online inclusions at this time and going into the future. It will give access to children who can't physically access the centre, and kinders and childcare centres would be willing to pay for the services. For a model you can see what the Royal Botanic Gardens have been doing whilst in lockdown.*

*Thank you*

*Regards*

[REDACTED]

**CBR-096**

**From:** [REDACTED]  
**Sent:** Friday, 10 July 2020 10:41 AM  
**To:** Helpdesk - Council Plan & Budget <[helpdeskabpp@portphillip.vic.gov.au](mailto:helpdeskabpp@portphillip.vic.gov.au)>  
**Subject:** Remembrance Garden, Railway Reserve Port Melbourne

**[External Email] Please be cautious before clicking on any links or attachments.**

I write as an interested rate payer and someone who is active in a number of associations in Port Phillip. It is of concern to many residents that the Council has not allocated the funding needed to complete the Remembrance Garden at Railway Reserve in Port Melbourne. I attended the Remembrance Day Service at the Reserve last November, along with many other residents, and was impressed at this initiative to commemorate our fallen. Many of my relatives went past this very place on their way to serve in both wars. Some did not return. This was something I reflected on as I stood there.

Why embark on a project and not finish it. While it stands uncompleted it is in danger of being abandoned because its full significance has not been established. The money already put into the Memorial will then be wasted. I believe it will cost \$22,000 to finish the project. Can we not just get on with it and finish the job? We will then have a fitting site to gather and reflect on the sacrifices made by our service people.

Yours sincerely,

[REDACTED]. President. Probus Port Melbourne

## CBR-097

**From:** [REDACTED]  
**Sent:** Friday, 10 July 2020 2:48 PM  
**To:** Helpdesk - Council Plan & Budget <[helpdeskabpp@portphillip.vic.gov.au](mailto:helpdeskabpp@portphillip.vic.gov.au)>  
**Cc:** [REDACTED]  
**Subject:** Submission: City of Port Phillip Plan 2017-27 and budget 2020/21

**[External Email] Please be cautious before clicking on any links or attachments.**

Dear Port Phillip Councillors,

Thank you for your continued support of the City of Voices Inclusive Theatre Group and SouthPort Community Centre.

City of Voices (COV) is an inclusive theatre company operating as a program of SouthPort Community Centre. Ours is one of 12 Council-funded programs run by SPCC that serve more than 300 participants each week.

At City of Voices, our mission is to give all people, regardless of age, ability or socio-economic status, the opportunity to engage in the creative arts.

Established in 1992, COV has been creating original theatrical work for the local Port Phillip community for over 25 years. The majority of our participants live, work or study in the City of Port Phillip.

During this COVID-19 epidemic, City of Voices has continued to meet on Zoom, supporting each other, reducing loneliness and isolation, and keeping our minds creative and active during what have been difficult times. We are not just a theatre group but a 'second family' for our members, many of whom are from vulnerable and isolated groups.

Research indicates that an active, healthy, resilient, well-informed and connected community will recover more quickly from disruptions like COVID-19. City of Voices is an example of that community connection in action. Port Phillip Council - your support makes that possible.

Thank you,

[REDACTED]

[REDACTED]  
Christ Church St Kilda  
14 Acland Street  
St Kilda VIC 3182  
Mobile: [REDACTED]  
e

**CBR-098**

**From:** [REDACTED]  
**Sent:** Friday, 10 July 2020 2:56 PM  
**To:** Helpdesk - Council Plan & Budget <[helpdeskabpp@portphillip.vic.gov.au](mailto:helpdeskabpp@portphillip.vic.gov.au)>  
**Subject:** Thankyou

**[External Email] Please be cautious before clicking on any links or attachments.**

*Dear Port Phillip Councillors,*

*Thank you for your continued support of the City of Voices Inclusive Theatre Group and SouthPort Community Centre.*

*City of Voices (COV) is an inclusive theatre company operating as a program of SouthPort Community Centre. Ours is one of 12 Council-funded programs run by SPCC that serve more than 300 participants each week.*

*At City of Voices, our mission is to give all people, regardless of age, ability or socio-economic status, the opportunity to engage in the creative arts.*

*Established in 1992, COV has been creating original theatrical work for the local Port Phillip community for over 25 years. The majority of our participants live, work or study in the City of Port Phillip.*

*During this COVID-19 epidemic, City of Voices has continued to meet on Zoom, supporting each other, reducing loneliness and isolation, and keeping our minds creative and active during what have been difficult times. We are not just a theatre group but a 'second family' for our members, many of whom are from vulnerable and isolated groups.*

*Research indicates that an active, healthy, resilient, well-informed and connected community will recover more quickly from disruptions like COVID-19. City of Voices is an example of that community connection in action. Port Phillip Council - your support makes that possible.*

*Thank you,*

[REDACTED] [REDACTED] 

**CBR-099**

**From:** [REDACTED]  
**Sent:** Friday, 10 July 2020 3:12 PM  
**To:** Helpdesk - Council Plan & Budget <[helpdeskabpp@portphillip.vic.gov.au](mailto:helpdeskabpp@portphillip.vic.gov.au)>  
**Subject:** City of Voices

**[External Email] Please be cautious before clicking on any links or attachments.**

*Dear Port Phillip Councillors,*

*Thank you for your continued support of the City of Voices Inclusive Theatre Group and SouthPort Community Centre.*

*City of Voices (COV) is an inclusive theatre company operating as a program of SouthPort Community Centre. Ours is one of 12 Council-funded programs run by SPCC that serve more than 300 participants each week.*

*At City of Voices, our mission is to give all people, regardless of age, ability or socio-economic status, the opportunity to engage in the creative arts.*

*Established in 1992, COV has been creating original theatrical work for the local Port Phillip community for over 25 years. The majority of our participants live, work or study in the City of Port Phillip.*

*During this COVID-19 epidemic, City of Voices has continued to meet on Zoom, supporting each other, reducing loneliness and isolation, and keeping our minds creative and active during what have been difficult times. We are not just a theatre group but a 'second family' for our members, many of whom are from vulnerable and isolated groups.*

*Research indicates that an active, healthy, resilient, well-informed and connected community will recover more quickly from disruptions like COVID-19. City of Voices is an example of that community connection in action. Port Phillip Council - your support makes that possible.*

*I have attended performances of COV and have seen first hand the quality and value of the work which City of Voices does. It is essential in my view, that COPP continue to support this vital and sadly all too rare, initiative.*

*Thank you,*

[REDACTED]  
[REDACTED]

**CBR-100**

**From:** [REDACTED]  
**Sent:** Saturday, 11 July 2020 3:44 PM  
**To:** Helpdesk - Council Plan & Budget <[helpdeskabpp@portphillip.vic.gov.au](mailto:helpdeskabpp@portphillip.vic.gov.au)>  
**Subject:** Dig In Community Garden - Budget Submission

**[External Email] Please be cautious before clicking on any links or attachments.**

Dear Port Phillip Council,

Thank you for your continued support of our Dig In Community Garden program and SPCC. It has made a hugely positive impact on my life.

Ours is one of 12 SPCC council funded programs that serve more than 300 participants each week.

Research indicates an active healthy, resilient, well-informed, connected community will recover more quickly from disruptions like COVID-19 and your support makes that possible.

Thank you,

[REDACTED]

Port Melbourne Resident and Dig In Garden Member



**CBR-101**

**From:** [REDACTED]  
**Sent:** Saturday, 11 July 2020 8:52 PM  
**To:** Helpdesk - Council Plan & Budget <[helpdeskabpp@portphillip.vic.gov.au](mailto:helpdeskabpp@portphillip.vic.gov.au)>  
**Subject:** Get out of town program

**[External Email] Please be cautious before clicking on any links or attachments.**

We are a family living in the high rise at [REDACTED] in South Melbourne. The get out of town program supports single parents and their kids and it is a really good program. My children and I use the program to catch up with other families when we attend the program. It also help us, because I am on a low income and it costs a lot of money. The get out of town program help us to experience new activities that are fun and educational. Thank you to Southport Community centre and the City of Port Phillip for supporting our programs  
Cheers [REDACTED] is Mumm of [REDACTED] & [REDACTED]

**CBR-102**

**From:** [REDACTED]  
**Sent:** Sunday, 12 July 2020 12:42 PM  
**To:** Helpdesk - Council Plan & Budget <[helpdeskabpp@portphillip.vic.gov.au](mailto:helpdeskabpp@portphillip.vic.gov.au)>  
**Subject:** Have your say---Draft Budget 2020/21

**[External Email] Please be cautious before clicking on any links or attachments.**

Councillors,

I am writing to support a submission for an allocation of \$22,000 to finalise the remaining work on the Remembrance Garden situated in the Port Melbourne railway reserve.

The design of the work has long been finalised; the only piece missing is the capital.

Your sincerely,  
[REDACTED]  
Middle Park.

**Submission to Draft Council Plan 2017-2027 and Draft Council Budget 2020/21**

I offer the following comments in relation to the Council Plan/Budget process:

I support Council's endeavours to maximise diversity within the City particularly through programs designed to maintain and increase social housing, and, to the extent of its powers, I support Council's encouragement and facilitation of the expansion of public housing stock in the municipality.

In order to ensure that residents of the City enduring social/economic disadvantage are able to continue residing within the City I support Council's contribution to the provision of adequate support services through the promotion and funding of material and other assistance as required.

I support Council's endeavours in reducing waste and encourage Council through its available mediums to encourage residents, businesses and visitors to the City to consume less, to place emphasis on quality rather than quantity and also to emphasise benefits of recycling and re-purposing in preference to the prevailing disposable ethic. I support Council funding organisations committed to these ideals with 'in-kind' support in addition to direct funding. Specifically, I endorse Council's support for the Port Philip Eco Centre for the valuable role it plays in these spaces.

I favour Council's support for the arts, but I suggest monies allocated to these programs are better allocated to small scale events directed at artists resident in the City of Port Philip rather on events such as the St Kilda Festival.

I am concerned that the Council's staff profile, and consequent expenditure, is skewed towards upper middle and senior management.

I understand some residents in the City are agitated about the level of their rates and what they perceive as a bias to their detriment. It is my view that the City makes sufficient provision to aid ratepayers in their payment and a review process exists if they are aggrieved by the rating.

Having listened and considered what staff and Councillors have said on a number of forums regarding the impact of COVID 19 I encourage Council to resist a slash and burn approach to the post-pandemic budget period. Many of our more vulnerable residents face challenging futures, it is important Council whenever possible maintain or increases expenditure on crucial social expenditure.

I consider myself fortunate to live in South Melbourne where I have resided for 37 years. In relation to the City and its governance paradoxically on questions of my amenity I find the City and its decisions a source of frustration, but, in the broader context, I support much of its work and offer my support and thanks.

██████████

South Melbourne 3205

**CBR-104**

**From:** [REDACTED]  
**Sent:** Monday, 13 July 2020 10:23 AM  
**To:** Helpdesk - Council Plan & Budget <[helpdeskabpp@portphillip.vic.gov.au](mailto:helpdeskabpp@portphillip.vic.gov.au)>  
**Subject:** "Have Your Say" submission: PORT MELBOURNE GARDEN OF REMEMBRANCE

**[External Email] Please be cautious before clicking on any links or attachments.**

Dear City of Port Phillip Councillors

My wife and I ask that you include completion of the Garden of Remembrance in the 2021 budget.

Much of the work on the Garden, located in the Port Melbourne Light Rail Reserve, has already been carried out, but the full significance of the Garden will continue to be unclear to observers until appropriate information plaques are installed.

As you know, the Light Rail Reserve is a popular walking precinct for locals, cruise passengers and those interested in pursuing the social, military and immigration history of Port Melbourne from Bay to City. The Garden of Remembrance is a very appropriate place for walkers to pause, learn and reflect, and as a spacious local focal point for individual or group gatherings (Covid-permitting).

We are 22-year residents of Port Melbourne and involved with Port Melbourne Probus and City of Port Phillip U3A. In both organizations there are many members with veteran connections. For my part, I am a retired Army lieutenant colonel and war veteran. My father and grandfathers were veterans as well, one of who embarked for Gallipoli from Princes Pier. Having a well-conceived, clearly identifiable commemorative garden site in our community is important to me and my extended family and to many in Port Melbourne and surrounds.

Please allocate the modest investment to bring the Garden of Remembrance to full fruition in 2021.

Sincerely, [REDACTED] (LTCOL, retired)

**CBR-105**

**From:** [REDACTED]  
**Sent:** Thursday, 9 July 2020 11:21 PM  
**To:** Helpdesk - Council Plan & Budget <[helpdeskabpp@portphillip.vic.gov.au](mailto:helpdeskabpp@portphillip.vic.gov.au)>  
**Subject:** ARCS & GOOT

**[External Email] Please be cautious before clicking on any links or attachments.**

Hello,

I would love to give feedback about the ARCS and the GOOT programs that I participated in over the last couple of years. Both have been fantastic and I am so grateful to be a part of the wonderful Southport community. I'm a single mum from England, with no family here, so this community has been so Special to me, almost like a Family. I'm most grateful to be involved. [REDACTED] provides amazing support and follow up.

Thanks

[REDACTED]

Sent from my iPhone

**CBR-106**

**From:** [REDACTED]  
**Sent:** Sunday, 12 July 2020 9:03 PM  
**To:** Councillors <[Councillors@portphillip.vic.gov.au](mailto:Councillors@portphillip.vic.gov.au)>  
**Subject:** Rate Relief for businesses that are struggling

**[External Email] Please be cautious before clicking on any links or attachments.**

To Port Phillip Councillors

Please Please councillors I beg you to open your heart and be kind

Please give prorata rate relief to all the small business that are struggling to pay their bill because of the lockdown, by no fault of their own

When Spring comes, do we only want to see the big chains open:  
Woollies, Coles, BWS, etc...  
A few businesses are going fine but many are struggling beyond comprehension.

Just think of the enormous economic collateral damage the lockdown is creating. How many mental stress and related illness, mental illness and suicides are you prepared to see to the owners and their families

Please think of our beautiful community  
Please save lives and  
Please save Port Phillip

**CBR-107**

**From:** [REDACTED]  
**Sent:** Monday, 13 July 2020 11:55 AM  
**To:** Helpdesk - Council Plan & Budget <[helpdeskabpp@portphillip.vic.gov.au](mailto:helpdeskabpp@portphillip.vic.gov.au)>  
**Cc:** [REDACTED]  
**Subject:** Thanks for funding SPCC

**[External Email] Please be cautious before clicking on any links or attachments.**

**Dear Port Phillip Council,**  
**Thank you for your continued support of our Women's Activity Group program and SPCC. It has made a hugely positive impact on our lives.**

Ours is one of 12 SPCC council funded programs that serve more than 300 participants each week.

**Research indicates an active healthy, resilient, well-informed, connected community will recover more quickly from disruptions like COVID-19 and your support makes that possible.**

**Thank you,**

[REDACTED]

Get [Outlook for iOS](#)



**CBR-108**

**From:** [REDACTED]  
**Sent:** Monday, 13 July 2020 11:56 AM  
**To:** Helpdesk - Council Plan & Budget <[helpdeskabpp@portphillip.vic.gov.au](mailto:helpdeskabpp@portphillip.vic.gov.au)>  
**Cc:** [REDACTED]  
**Subject:** proposed port phillip budget - comments

**[External Email] Please be cautious before clicking on any links or attachments.**

I do not support an increase in rates without: a detailed analysis of recurrent costs and the opportunity for savings plus a review of the capital plan against risks of deferral delay and/ or deletion.

regards

[REDACTED]  
[REDACTED]

Sent from [Mail](#) for Windows 10

**CBR-109**

**From:** [REDACTED]  
**Sent:** Monday, 13 July 2020 12:25 PM  
**To:** Helpdesk - Council Plan & Budget <[helpdeskabpp@portphillip.vic.gov.au](mailto:helpdeskabpp@portphillip.vic.gov.au)>  
**Subject:** Dig in Community Garden

**[External Email] Please be cautious before clicking on any links or attachments.**

I just want to thank the council for continued support for our Dig In Community Gardens. It has made an enormous difference to our lives as we all battle the lockdown protocols of Covid 19. Everyone at the gardens are extremely careful to abide by these protocols and we would be more than grateful that the Council continues to support the community, especially our older Garden members, with this initiative.

Many thanks,

[REDACTED]

[REDACTED]

*Civil Marriage Celebrant*

[REDACTED]

[REDACTED]

[REDACTED]

[REDACTED]

**CBR-110**

**From:** [REDACTED]  
**Sent:** Monday, 13 July 2020 3:06 PM  
**To:** Helpdesk - Council Plan & Budget <[helpdeskabpp@portphillip.vic.gov.au](mailto:helpdeskabpp@portphillip.vic.gov.au)>  
**Subject:** GOOT

**[External Email] Please be cautious before clicking on any links or attachments.**

**Dear Port Phillip Council,**  
**Thank you for your continued support of our GOOT program and SPCC. It has made a hugely positive impact on our lives.**

Ours is one of 12 SPCC council funded programs that serve more than 300 participants each week.

Kids need GOOT because it's a great experience for them. It's something they can tell their friends about. It's something that gets them out of the house interacting with kids their age. Something that inspires them. An adventure to look forward to and enjoy. A memory that lasts a lifetime. To get out and about! Both my kids are new to the program and have benefited by participating in indigenous painting, and exploring national parks.

Please keep the funding going!

**Research indicates an active, healthy, resilient, well-informed, connected community will recover more quickly from disruptions like COVID-19 and your support makes that possible.**

Thank you,

[REDACTED]

## REQUEST FOR GARDEN REMEMBRANCE FUNDING 2021 BUDGET.

Mayor and Councillors  
City of Port Phillip,

Dear Mayor and Councillors,

I support the need for funding of \$22,000 to complete the Remembrance Garden installed by Council in 2018 in the Port Melbourne Railway Reserve as this significant project deserves completion.

The funding is necessary to complete the installation of up to five panels/plaques on social history, military and cultural heritage themes to commemorate the recognition of our involvement in World War One.

By completing the Gardens, it will pay homage to almost a thousand residents of our City who lost their lives in WW1, to those who returned traumatised and wounded and died shortly thereafter and to those who contributed to the war effort from the home front.

An event as significant as this warrants recognition so that present and future generations can realize and better understand the kind of sacrifices that were made in order to protect the way of life we appreciate so much today. The completion of the Garden, as proposed in 2018, will become another City of Port Phillip landmark.

Yours sincerely,



Committee member: World War One Centenary Community Commemorative Committee

Former Councillor: City of South Melbourne

Inaugural President: Middle Park History Group

 Middle Park 3206

**CBR-112**

**From:** [REDACTED]  
**Sent:** Tuesday, 14 July 2020 10:38 AM  
**To:** Helpdesk - Council Plan & Budget <[helpdeskabpp@portphillip.vic.gov.au](mailto:helpdeskabpp@portphillip.vic.gov.au)>  
**Subject:** Thank you for your support of Accessible Yoga program at SPCC

[External Email] Please be cautious before clicking on any links or attachments.

**Dear Port Phillip Council,**

**Thank you for your continued support of our Accessible Yoga program and SPCC. It has made a hugely positive impact on our lives.**

Ours is one of 12 SPCC council funded programs that serve more than 300 participants each week.

**Research indicates an active healthy, resilient, well-informed, connected community will recover more quickly from disruptions like COVID-19 and your support makes that possible.**

**Thank you,**

[REDACTED]

**CBR-113**

**From:** [REDACTED]  
**Sent:** Tuesday, 14 July 2020 10:36 AM  
**To:** Helpdesk - Council Plan & Budget <[helpdeskabpp@portphillip.vic.gov.au](mailto:helpdeskabpp@portphillip.vic.gov.au)>  
**Subject:** Support SPCC council funded programs

**[External Email] Please be cautious before clicking on any links or attachments.**

**Dear Port Phillip Council,**

**Thank you for your continued support of our Accessible Yoga program and SPCC. It has made a hugely positive impact on our lives.**

Ours is one of 12 SPCC council funded programs that serve more than 300 participants each week.

**Research indicates an active healthy, resilient, well-informed, connected community will recover more quickly from disruptions like COVID-19 and your support makes that possible.**

**Thank you,**

[REDACTED]

**CBR-114**

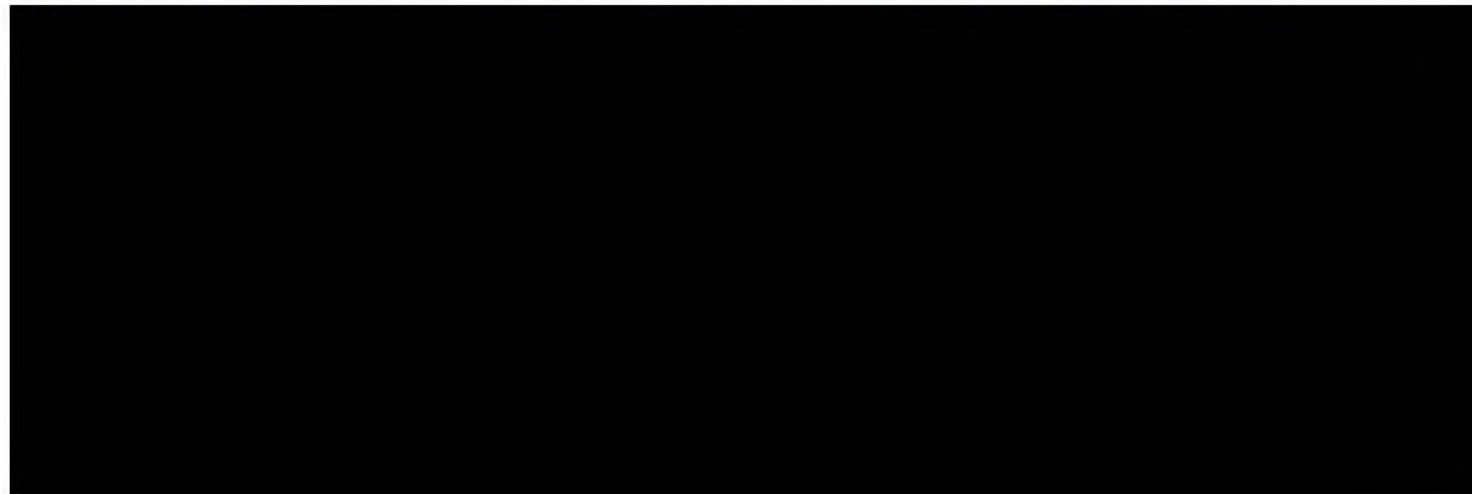
██████████ called as she has received a pamphlet in the post from the Rates Payers of Port Phillip Association today in regards to where's they believe council is spending the rates and she is not happy.

She advised it states

- 2% pay rise for staff when we already spend 92million a year on wages
- CEO's salary, bonuses and increase
- Senior Management wages increases when they shouldn't
- Rates are having a 2% increase for all revenue raised and she believes it should be frozen for the year 20/21

She is a pensioner and was quite upset, I didn't go in to any detail with her and advised someone will call her back – or more preferably an email to ██████████ - as she is hard at hearing – ██████████

She advised if she does not get a response in a reasonable amount of time she will be going to the press.



**CBR-115**

**From:** [REDACTED]  
**Sent:** Tuesday, 14 July 2020 11:42 AM  
**To:** Helpdesk - Council Plan & Budget <[helpdeskabpp@portphillip.vic.gov.au](mailto:helpdeskabpp@portphillip.vic.gov.au)>  
**Subject:** From [REDACTED]

**[External Email] Please be cautious before clicking on any links or attachments.**

I would like to express my support for the Eco House in St Kilda Botanic Gardens Last year , I attended the annual Festival, to host the function, and " met and greet" the locals.

It was very impressive to see the impact that the Eco House has on local participants young and old.The range of activities it does is so worthwhile,it is inclusive, it is educational and with its sustainable objectives, is providing a very positive way that people can live a better life.

It ,and all the volunteers are to be commended,as with the Port Phillip Council . I would hope that every local council or municipality could set up such an establishment , to encourage the work and enthusiasm from its members.

Yours [REDACTED] OAM

Sent from my iPad



**CBR-116**

**From:** [REDACTED]  
**Sent:** Tuesday, 14 July 2020 12:20 PM  
**To:** Helpdesk - Council Plan & Budget <[helpdeskabpp@portphillip.vic.gov.au](mailto:helpdeskabpp@portphillip.vic.gov.au)>  
**Subject:** Budget

[External Email] Please be cautious before clicking on any links or attachments.

**Dear Port Phillip Council,**

**Thank you for your continued support of our Accessible Yoga program and SPCC. It has made a hugely positive impact on our lives.**

Ours is one of 12 SPCC council funded programs that serve more than 300 participants each week.

**Research indicates an active, healthy, resilient, well-informed, connected community will recover more quickly from disruptions like COVID-19 and your support makes that possible.**

**I am also a volunteer at SPDL and strongly support their programs and what they do for residents in the Port Phillip community .**

**Thank you,**

[REDACTED]  
[REDACTED] **Port Melbourne**  
[REDACTED]  
[REDACTED]

**CBR-117**

**From:** [REDACTED]  
**Sent:** Monday, 6 July 2020 6:31 PM  
**To:** Helpdesk - Council Plan & Budget <[helpdeskabpp@portphillip.vic.gov.au](mailto:helpdeskabpp@portphillip.vic.gov.au)>  
**Subject:** South Port Community Centre

**[External Email] Please be cautious before clicking on any links or attachments.**

Dear Port Phillip Council,

I thank you immensely for your continued support of the Get Out Of Town program that I have been regularly involved in with my daughter over the last several years and the and the Make Your Mark program that has been an inspiration for me. The South Port Community Centre offers a range of great programs and activities that is beneficial for all the members of the surrounding suburbs.

Research indicates an active, healthy, resilient, well-informed, connected community will recover more quickly from disruptions like COVID-19 and your support makes that possible.

Thank you,

[REDACTED]

--

[REDACTED]

[REDACTED]

Port Melbourne 3207

[REDACTED]

[REDACTED]

**CBR-118**

**From:** [REDACTED]  
**Sent:** Tuesday, 7 July 2020 11:05 AM  
**To:** Helpdesk - Council Plan & Budget <[helpdeskabpp@portphillip.vic.gov.au](mailto:helpdeskabpp@portphillip.vic.gov.au)>  
**Subject:** Thank you for the ARCS!

**[External Email] Please be cautious before clicking on any links or attachments.**

Dear Port Phillip Councillors,

Thank you for your continued support of the ARCS - Applied Reception/Customer Service Training Program and SouthPort Community Centre.

ARCS is an ongoing 21 week vocational training program, catering to those who are under-employed or experiencing barriers to employment.

A recent survey showed that 91% of ARCS graduates go on to either further study, skilled volunteering or paid work.

During this COVID-19 epidemic, the ARCS program continued via the online platform, Zoom with 12 participants successfully graduating last week.

The ongoing support of Port Phillip Council will continue to make this happen, helping others successfully embark on their journey from unemployment into the world of work.

Thank you,  
Regards

[REDACTED]  
Get [Outlook for Android](#)

**CBR-119**

**From:** [REDACTED]  
**Sent:** Tuesday, 7 July 2020 1:26 PM  
**To:** Helpdesk - Council Plan & Budget <[helpdeskabpp@portphillip.vic.gov.au](mailto:helpdeskabpp@portphillip.vic.gov.au)>  
**Subject:** ARCS

**[External Email] Please be cautious before clicking on any links or attachments.**

Dear Port Phillip Councillors,

Thank you for your continued support of the ARCS - Applied Reception/Customer Service Training Program and SouthPort Community Centre.

ARCS is an ongoing 21 week vocational training program, catering to those who are under-employed or experiencing barriers to employment.

A recent survey showed that 91% of ARCS graduates go on to either further study, skilled volunteering or paid work.

During this COVID-19 epidemic, the ARCS program continued via the online platform, Zoom with 12 participants successfully graduating last week.

The ongoing support of Port Phillip Council will continue to make this happen, helping others successfully embark on their journey from unemployment into the world of work.

Thank you,

[REDACTED]  
[REDACTED]

**CBR-120**

**From:** [REDACTED]  
**Sent:** Tuesday, 14 July 2020 7:57 PM  
**To:** Helpdesk - Council Plan & Budget <[helpdeskabpp@portphillip.vic.gov.au](mailto:helpdeskabpp@portphillip.vic.gov.au)>  
**Subject:** waste collection fee

**[External Email] Please be cautious before clicking on any links or attachments.**

Hi, I live in [REDACTED], Port Melbourne. All the residences in this development pay a body corporate to collect weekly waste, manage our roads and street lamps. We pay about \$2000 to the body corporate. We also pay the full council rates. We were informed over 2 years ago that the council was working to find a solution to remove the waste collection costs from our council rates given this is not a service that is provided to us. We are wondering if the solution will come soon!

Looking forwards to your reply!

[REDACTED]

Sent from [Mail](#) for Windows 10

██████████, Port Melbourne 3207

██████████

14<sup>th</sup> July 2020

Letter of support for exercise classes conducted by ██████████

To whom it may concern:

I write to support the continuation of exercise classes conducted under the auspices of South Port Community Centre by ██████████.

██████████ has a gift, which coupled with her professional experience, is the ability to tailor her classes to suit the particular physical needs of the more senior members of the Port Phillip community.

As well as helping maintain physical strength, the classes also provide valuable social networking opportunities, which benefit mental health.

Personally, I've found ██████████'s stretch and strength classes enormously helpful in recovering from an ankle and a knee injury. Through the combination of weight, cardiac and muscle strengthening exercises she gives, I've noticed a marked improvement in my balance, flexibility, strength and just as importantly, my overall sense of fitness and wellbeing.

Having begun classes with ██████████ at the Port Melbourne/Liardet Street Neighbourhood Centre, which is now closed, the chance to be able to continue to access her weekly classes on-line has been a real life-saver during the Covid 19-induced restrictions. It is vital that they can continue.

If you'd like to know anything else about my support for South Port, and/or COPP, to enable ██████████'s classes to continue, please contact me.

Regards,

██████████

**CBR-123**

**From:** [REDACTED]  
**Sent:** Wednesday, 15 July 2020 12:44 PM  
**To:** Helpdesk - Council Plan & Budget <[helpdeskabpp@portphillip.vic.gov.au](mailto:helpdeskabpp@portphillip.vic.gov.au)>  
**Subject:** Support Programs

**[External Email] Please be cautious before clicking on any links or attachments.**

I take this opportunity to say thank you for the efforts you are making to allow people like myself to cross reference and have social contact with others of many different age groups and backgrounds. I am active in the Choir, Writing and Communication groups and thoroughly enjoy each one. Good work and much appreciated, „sincerely . [REDACTED]

## **CBR-151**

### **Monday Drop In South Port Community Centre**

Monday Drop in is a weekly activity for people with a mental illness living in City of Port Phillip in low cost housing, rooming houses, and Special Supported accommodation services.

This program has had 15 participants all with co mobility issues such as mental health, intellectual, physical, and chronic health conditions.

This group of participants are socially isolated and have lived with the stigma of mental health and intellectual disabilities.

The program provides education, social acceptance, referrals to supports and services and a place that they feel that they belong and have control over.

The program has provided mentoring and modelling around healthy eating, budgeting, social etiquette and fun.

This year there has been 3 deaths due to chronic health issues. The participants have been supported to attend the funerals and to talk about how they are feeling at the loss of their friends.

A number of participants in the Monday Drop In group have literacy issues and find it difficult to read and write and use computers.

During the year we had weekly outings and asked the participants were they would like to go. We also placed the participants in a leadership role so that they could choose the outing and give us some information what they new about the outing. This gave the group ownership on what they liked and places of importance.

During the Corona Virus Pandemic SPCC supported participants in the Monday drop In program by contacting them weekly.

15 Community Participants in Monday drop in

10 Men

5 women

#### **Disability:**

6 Participants have a dual diagnosis Mental Health and Intellectual disability.

2 have Mental health and physical disability with mobility issues.

3 have chronic mental health issues.

6 have diabetes.

4 Community Members have NDIS packages.



### **Living arrangements:**

4 Community participants live with family

6 live on their own

1 lives in a Nursing home.

### **Background**

6 participants have Greek background and speak Greek at home

English is their second language.

9. participants have Australian background.

### Summary and themes

330 Individual phone contacts during the Corona Virus since March 20<sup>th</sup> 2020.

Most community members struggled with IT and mobile phones. They have intellectual and mental health issues and low literacy skills.

All participants spoke about feeling depressed and flat because the group was not meeting.

Needed to explain the corona virus and what they needed to do to keep themselves safe.

All were feeling of lonely because they have limited friendship circles and the Monday Drop-In group is an important social connection and social activity.

We spoke about them going for their health check ups and their need to continue to connect to their GP's

6 community members have English as a second language and they really enjoyed coming to the Monday drop in to catch up with friends and chat. Most spoke about missing this activity.

Many did not understand the need to be isolated and did not understand the Health Literacy around corona virus. We spoke a great deal with participants about washing their hands and not going out if they did not need to go out to keep themselves safe and their elderly parents.

Many participants spoke about missing the social and physical contact with other participants in the group.

Needed to do referrals to GP, dental, counsellors.

2 participants died and we needed to let participants know about this. Participants spoke about feeling grief and loss because their friends had passed away and they could not say goodbye to them.

### **Case study**

A is a 59-year-old woman with an Intellectual disability and is hearing impaired. A currently lives with her 84-year-old mother who has had ongoing chemotherapy for breast cancer.

A has lived with her mother for many years. She has attended the Monday drop in and enjoys catching up with other participants in the group.

A 's mother went into Hospice and A moved into accommodation on her own. A received emotional support and was referred for Home and Community Care. She linked into gym group and was supported to begin to use her walking frame to give her better mobility when she was walking. She had fallen and hurt herself on occasions.

A has received ongoing emotional support from the Monday drop In facilitators and group participants whilst she transitioned to living on her own. A's mother passed away and the group was able to support A emotionally with her grieving process.

CBR-152

The Mayor  
The City Of Port Phillip

13 July 2020

Dear Madam

With regard to the proposed budget for the 2020/2021 financial year I believe that the Council should set an example and work within the restraints that now face the whole community.

Most people will find it difficult enough to meet their existing commitments let alone find money for a rates increase. How is it that the rest of the community have to manage with less and Council believes that it is entitled to more. Please find a way to manage within the framework of your annual revenue and do not draw on money set aside to meet expected future commitments.

Your projected rate increase says to the rate payers of the City of Port Phillip that you do not share their pain during these unprecedented difficult times.

This is a time to show leadership .

██████████ AM

**CBR-178**

**From:** [REDACTED]  
**Sent:** Wednesday, 15 July 2020 8:59 AM  
**To:** Helpdesk - Council Plan & Budget <[helpdeskabpp@portphillip.vic.gov.au](mailto:helpdeskabpp@portphillip.vic.gov.au)>  
**Subject:** Council Budget Submission

**[External Email] Please be cautious before clicking on any links or attachments.**

I am a long term resident of Elwood. I would like to endorse the Council budget and participated in Q&A and hub focus meetings. The process has been good. I would like to thank council for continuing to support both Friends and Suai/Covalima program and the Eco Centre program.

They are both important contributions to our community that have impacts that are far reaching. We all know this is a challenging time for council and its ongoing programs. I support the work of council and encourage you to support the most vulnerable in our community.

Thank you for the ongoing support for Friends of Suai. I would like to endorse the visionary support you provided through the Friendship Agreement with Suai Timor-Leste and in turn through the program and budget which is changing lives through education and health and livelihoods. Supporting the establishment of local government in Timor is a key aim. It is an important social connection in Port Phillip that brings out the best in humanity.

As Julian Hill MP and former Mayor said at the recent 20th anniversary webinar, it is a stellar example of what friendship can provide in our region with a small monetary contribution which stretches with extraordinary outcomes due to the diligence of the program.

I would also like to endorse the budget for the Eco Centre too, it is an extraordinary organisation that provides what is really important to our community through leadership in environmental matters and a place that contributes to our well being. It does great work for the young and the older community member and an organisation that is vital to the climate emergency. This time of Covid-19 continues to be challenging but united we can support people to be safe and well.

Thank You

[REDACTED]  
[REDACTED]

Elwood

**CBR-179**

**From:** [REDACTED]  
**Sent:** Wednesday, 15 July 2020 10:19 AM  
**To:** Helpdesk - Council Plan & Budget <[helpdeskabpp@portphillip.vic.gov.au](mailto:helpdeskabpp@portphillip.vic.gov.au)>  
**Subject:** Feedback

**[External Email] Please be cautious before clicking on any links or attachments.**

Good morning,

My name is [REDACTED]  
I have been attending different classes by zoom application which have been organised by south port community centre .

During this strange time of pandemic these classes specially with communication skills and creative writing have been extremely helpful, benevolent and supportive and I am deeply grateful for them .

I hope these classes as well as other activities would continue to be available in future.

Thanks again,

Kindest regards,

[REDACTED]

**CBR-180**

**From:** [REDACTED]  
**Sent:** Wednesday, 15 July 2020 10:28 AM  
**To:** Helpdesk - Council Plan & Budget <[helpdeskabpp@portphillip.vic.gov.au](mailto:helpdeskabpp@portphillip.vic.gov.au)>  
**Subject:** Council draft budget

**[External Email] Please be cautious before clicking on any links or attachments.**

It is vital that the council lends its full budgetary support to the Eco centre. This has become a vital source of information for an increasingly large population in this electorate that has a need to develop food sources, healthy environments and cleaner seas. Given that the effects of covid has altered so many lives economically and mentally, self sufficiency, environmental protections and usage of land and water amenities are all paramount to the generations living here.

Please do not let the Eco centre slip off the page when it is about to make a monumental step forward in this new status quo.

Kind regards,

[REDACTED]  
[REDACTED]  
[REDACTED]

**CBR-181**

**From:** [REDACTED]  
**Sent:** Wednesday, 15 July 2020 1:52 PM  
**To:** Helpdesk - Council Plan & Budget <[helpdeskabpp@portphillip.vic.gov.au](mailto:helpdeskabpp@portphillip.vic.gov.au)>  
**Subject:** SPCC support

**[External Email] Please be cautious before clicking on any links or attachments.**

**Dear Port Phillip Council,**

**Thank you for your continued support of our many council funded programs and SPCC. This funding and the many programs it provides to the community has made a hugely positive impact many lives each week.**

There are currently 12 SPCC council funded programs that serve more than 300 participants each week. Many of these programs actively support the most disadvantaged and isolated residents in our community, who are significantly affected by COVID19. Our workers & programs are actively involved in keeping our isolated and vulnerable residents/participants supported, informed, safe and connected during these challenging times.

For Make Your Mark Program the funding has ensured that vulnerable young people in the area can still focus on creative activities and stay connected with their fellow artists and facilitators. It means we can continue to develop their artistic and entrepreneurial skills as well boost their sense of purpose and self esteem.

Hopefully as this COVID crises begins to pass in the coming months, and thanks to your support, SPCC will be in a position to continue to support our community towards recovery. Research indicates an active healthy, resilient, well-informed, connected community will recover more quickly from disruptions like COVID-19 and your support makes that possible.

Thank you,

[REDACTED]

**SPCC, Make Your Mark Coordinator, Art Connect Facilitator**

[REDACTED]  
[REDACTED]  
[REDACTED]  
[REDACTED]  
[REDACTED]  
[REDACTED]  
[REDACTED]  
[REDACTED]

**CBR-182**

**From:** [REDACTED]  
**Sent:** Wednesday, 15 July 2020 3:39 PM  
**To:** Helpdesk - Council Plan & Budget <[helpdeskabpp@portphillip.vic.gov.au](mailto:helpdeskabpp@portphillip.vic.gov.au)>  
**Subject:** UPDATED COUNCIL PLAN AND DRAFT BUDGET 2020/21

**[External Email] Please be cautious before clicking on any links or attachments.**

Hi,

I'm a ratepayer at [REDACTED], Port Melbourne.

Our property is in the Ingles Terrace development.

Our development uses private contractors for our waste service, yet we are still charged for waste services in our Council rates. Council does not provide us with a waste service, yet we are paying for one.

I would appreciate that the council plan and budget be amended to remove the charging of ratepayers for services that we don't use. Either that, or Council start collecting our waste so that the Owners Corporation can cancel the private waste service.

Regards,

[REDACTED]

[REDACTED]



**CBR-183**

**From:** [REDACTED]  
**Sent:** Wednesday, 15 July 2020 2:12 PM  
**To:** Helpdesk - Council Plan & Budget <[helpdeskabpp@portphillip.vic.gov.au](mailto:helpdeskabpp@portphillip.vic.gov.au)>  
**Subject:** REQUEST FOR FUNDING TO COMPLETE THE GARDEN OF REMEMBRANCE

**[External Email] Please be cautious before clicking on any links or attachments.**

REQUEST FOR GARDEN REMEMBRANCE FUNDING "HAVE YOUR SAY" 2021 BUDGET.

Council,

I am a resident of the City of Port Phillip and a Board Member of the National Trust Australia (Victoria).

**The necessary funding of \$22,000 to complete the work on the Remembrance Garden installed by Council in 2018 in the Port Melbourne Railway Reserve was not provided in that year and requests for inclusion in successive budgets have been unsuccessful. Neither has funding been included in the draft budget for 2021.**

Completion of the Garden involves the installation of up to five panels/plaques on social history, military and cultural heritage themes. This will promote the Gardens significance to local residents, visitors, military and social history and to schools. Without this, the Garden is adversely impacted and does not do justice to this important Council asset.

Almost a thousand residents of our City lost their lives in WW1 and several hundred's in WW2 and there were many more who returned traumatised and wounded and died shortly thereafter. It is important that they be properly memorialised as also should the impact on their families and other citizens of our City left behind. To continue to leave the Garden unfinished is to fail in our duty to all of them.

Over 100 years ago, it is thought that returning soldiers brought back with them to Australia the Spanish Flu. Another consequence of World War I. The Remembrance garden is an appropriate place to acknowledge the impact that the Wars overall had on our community then and now.

Funding for this project in the 2021 budget is particularly relevant as we celebrate the 75th anniversary of Victory in Europe and the Pacific.

It is appreciated that COVID-19 has had an immense impact on the Council's capital budget, however it is contended that the capital for this project is minimal. Plans for the Garden have long been finalised and the work can be completed without delay.

**It is respectfully requested that the \$22,000 needed to complete the work on this project as per the final design, be reviewed for inclusion in the 2021 budget.**

Yours Sincerely,

[REDACTED]



challenging due to very short time limits. It is expected that with the very unlikely immediate breakthrough in a vaccine being available to combat the coronavirus vulnerable community members will be at a heightened risk in using any form of public transport. In this event they will either be effectively relegated to staying at home becoming socially isolated or resorting to private transport such as cars if they want to attend U3A classes. U3APP is making a concerted effort to remain connected with its members to alleviate the possibility of adverse effects of social isolation on its members.

U3APP has been very effective in migrating many of its activities to online platforms however this only assists with approximately 60% of members. Many members rely on face to face classes as a primary source of social interaction and whilst online classes fulfil a part of their interests the face to face interaction is vital for their mental wellbeing.

Going forward it is expected that many more members will seek to use private transport to attend classes and activities. It is at this point that the current parking restrictions will heavily influence and impact on the ability of members to attend classes. U3APP therefore proposes that Port Phillip Council introduce a new class of parking permit. This parking permit would be in line with the parking permits that currently exist but would be limited to members of organisations who have formal leasing arrangements with the Council to utilize community centres on a regular basis and effects on members because they cannot attend face to face classes.

- Permits to be limited to geographic boundaries i.e. the streets immediately surrounding the community centre.
- Time limits to be a maximum of 4 hours during the hours of 9.00 am to 5.00pm.
- Eligibility to be limited to;
  - a. Residents in Port Phillip post codes, and
  - b. Members of a community organization with a leasing agreement with Port Phillip Council for ongoing use of a community centre, and
  - c. The applicant is the holder of a state issued Seniors Card.
- Permit to be issued annually on an application basis in line with other parking permits.

Permits would have no impact on council revenue in view of the fact that the community centres are in locations which do not have metered parking.

Daytime limits would mitigate impact on local residents.

Minimal administration cost on council as the infrastructure currently exists within the Council to issue and manage parking permits

## **Reopening of Community Centres**

To date community centres have been closed since March and remain so. As currently advised Port Phillip Council community centres will remain closed for an indefinite period. U3APP understands the reasons for these closures and appreciates the care and concern shown by the Council for retirees in the community.

In the near future it is hoped that these centres will be able to reopen however as with other establishments it will be a long time before they will be able to operate as they did before the pandemic. There will be additional costs in how the facilities are managed and increased attention and frequency of cleaning. This is very important as these facilities are multi use establishments, and frequently with different groups occupying the premises at the same time.

U3APP believes that it would be of assistance to the Council and users of these facilities if there was a budget item with a realistic budget amount identified to cover the costs associated with reopening and managing and maintaining community facilities.

### **Access to technology**

U3APP supports a number of initiatives as detailed in the following paragraph particularly those related to bridging the digital divide for retirees. As detailed in this submission U3A has successfully migrated many of its courses to the online world and has worked well with members to provide them with the skills to participate remotely. There is an increasing need in this area and as is expected the future will be very different. U3APP submits that the Council can play a vital role in ensuring that retirees are not left behind in terms of both access to technology and IT literacy.

One particular initiative that would be of great assistance in this area is an upgrade of the audio/visual technology in the hall at the Mary Kehoe Centre. The use of this hall will become of greater importance going forward as it is the only area at the Centre that will accommodate people under the new rules around social distancing. If this hall cannot be used effectively then in effect the whole of the Mary Kehoe Centre is unusable. The upgrade of the technology in this area will assist the whole of the U3A membership as well as other users of this facility.

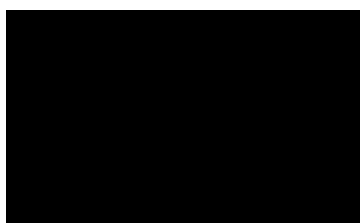
### **Support for specific initiatives in the draft budget.**

U3APP plays a specific role in the community. Its members interests cover the broad spectrum of issues identified in the draft budget however U3APP is limiting its submission to those matters that affect residents as members of U3APP. In that vein U3APP acknowledges and supports the following specific initiatives detailed in the draft budget.

- Corporate volunteer program – allow staff to volunteer for up to 2 days per annum. Volunteering directed to local community sector organisations delivering programs to support social recovery and / or on-going relief for vulnerable communities.
- Targeted grants to rebuild social connections post COVID-19 – Deliver Quick Response Community Grants (available 6 months July – Dec 2020) promoting social connections and community resilience.
- Proceed with Community Grants – current applicants will be given an opportunity to recast applications to address key COVID impacts before assessment process continues. Funds would be distributed to successful applicants in September.
- Bridging the digital divide - provide training, equipment and other support to community. Facilitate delivery of on-line programs and access for users.
- Work with the community sector to understand emerging impacts – Develop mechanisms for community sector to collaborate and share insights.
- Continue delivery of programs and events that celebrate our diverse communities, including seniors' events.

Your positive consideration of these matters in finalizing the budget would be greatly appreciated.

Regards



President U3APP

South Melbourne Vic 3205

Email

Website: [www.u3app.org.au](http://www.u3app.org.au)

**CBR-186**

**From:** [REDACTED]  
**Sent:** Wednesday, 15 July 2020 2:53 PM  
**To:** Helpdesk - Council Plan & Budget <[helpdeskabpp@portphillip.vic.gov.au](mailto:helpdeskabpp@portphillip.vic.gov.au)>  
**Subject:** Submission to COPP budget

**[External Email] Please be cautious before clicking on any links or attachments.**

Dear Port Phillip Councillors,

I know it has been a particularly challenging budget for you with the ramifications of COVID19.

Accordingly I would like to thank you wholeheartedly for your continued support of SouthPort Community Centre, particularly when you have had to manage the difficult process of finding significant savings.

As you know we focus almost entirely on the more vulnerable members of our community with the 12 council funded programmes. Currently these programmes service more than 300 participants, all of whom are healthier and less isolated as a result of your continued support.

Thank you again,

Sincerely

[REDACTED] Treasurer SPCC

**CBR-187**

**From:** [REDACTED]  
**Sent:** Monday, 6 July 2020 11:32 AM  
**To:** Helpdesk - Council Plan & Budget <[helpdeskabpp@portphillip.vic.gov.au](mailto:helpdeskabpp@portphillip.vic.gov.au)>  
**Subject:** Love SPCC, love our program, thank you council!

**[External Email] Please be cautious before clicking on any links or attachments.**

Dear Port Phillip Council,

Thank you for your continued support of our Women's Activity Group program and SPCC. It has made a hugely positive impact on our lives. Ours is one of 12 SPCC council funded programs that serve more than 300 participants each week.

Research indicates an active healthy, resilient, well-informed, connected community will recover more quickly from disruptions like COVID-19 and your support makes that possible.

Thank you,



Kind Regards,

[REDACTED]  
Administration  
**SouthPort Community Centre Inc**  
cnr Nott & Liardet Sts, Port Melbourne

Phone: 03 9645 1476  
Fax: 03 9645 4539  
PO Box 721, PORT MELBOURNE VIC 3207

web: [www.southportcc.org.au](http://www.southportcc.org.au)



**Please note our name has changed!**

**CBR-188**

**From:** [REDACTED]  
**Sent:** Wednesday, 15 July 2020 3:45 PM  
**To:** Helpdesk - Council Plan & Budget <[helpdeskabpp@portphillip.vic.gov.au](mailto:helpdeskabpp@portphillip.vic.gov.au)>  
**Subject:** Thank you for your support of SPCC

**[External Email] Please be cautious before clicking on any links or attachments.**

Dear Port Phillip Council,

Thank you for your continued support of our many council funded programs and SouthPort Community Centre (SPCC). This funding ensures the various programs run by SPCC continue to have a massive positive impact on many lives in our local community each week.

There are currently 12 SPCC council funded programs that serve more than 300 participants each week, with many of these programs actively supporting the most disadvantaged and isolated residents in our community.

Given the nature of COVID and the resulting impact on our communities, it is even more important now that we are actively involved in keeping our isolated and vulnerable residents/participants supported, informed, safe and connected during these challenging times.

Research indicates an active, healthy, resilient, well-informed, and connected community will recover more quickly from disruptions like COVID-19 and thanks to your continued support, SPCC will be in a position to carry on the support of our community towards recovery.

Thank you,

[REDACTED]  
[REDACTED]

Submission on the Draft Budget 2020 - 21  
The Multicultural Advisory Committee (MAC)

Background

Cultural, linguistic and religious diversity has been built into the character of Port Phillip over many years. Currently one in three people living in Port Phillip was born overseas. Over 20 per cent of the population speak a language other than English at home. Overall, 114 languages are spoken in our community. People are arriving to the area from overseas in unprecedented numbers, with the current increase the highest in 50 years. The MAC was established in 2019 by the Council reflecting its commitment to consultation and openness to hearing the voices of its diverse community.

The Committee welcomes the responsibility of providing the Council with a 'diversity lens' for its decision-making. We believe that issues which affect the vulnerable including homelessness, unemployment, ageing, poverty and homophobia for example, become more complex as these intersect with migration, expressions of religiosity and linguistic barriers. Currently Covid-19 has highlighted the vulnerability of segments of our community including international students and asylum seekers, many of whom are without work and unable to access government support. It is also worth noting that there is evidence of increasing racism which is having an impact on members of the Chinese and Jewish communities, groups with high representation within Port Phillip.

The Committee has established an Action Plan (included in full below) outlining its priorities for work with the Council. Our top priorities are to assist Council to;

- develop a multicultural communications plan
- ascertain the needs of multicultural groups catering for seniors
- develop and implement language access guidelines
- provide new arrivals with information about our community and information related to employment specifically.

Current services for multicultural communities

There is very little funding allocated to support specific multicultural programs. Current financial support includes;

- Diversity and Ageing Support Grants (\$22475).
- Cultural Diversity Week and Refugee Week funding.
- Administrative support for the MAC, Multifaith network and Multicultural Forum.
- Administrative assistance to multicultural senior groups towards preparation and acquittal of grant applications.
- Translating and interpreting budget.
- Multicultural library collection funding.

Multicultural communities also access small amounts of mainstream funding including;



- Community Grants Program of which a very small percentage is allocated to multicultural groups;
- Meals Subsidy Grants of which approximately 40 percent of the \$200K, goes towards culturally and linguistically diverse (CALD) senior groups.
- Seniors Festival funding of which a small percentage assists CALD senior groups to participate.
- Rent subsidisation to support 10-15 multicultural senior groups to meet at Council facilities.

Communities would welcome an on-going commitment to funding multicultural activities and programmes through a clearly delineated budget line.

#### Proposed changes and reductions 2020-21

- The MAC seeks confirmation that the rearrangement of the grant schemes being put forward will not have a deleterious impact on the capacity for ethnic minority community groups to apply for and receive funding for their community activities. Many such groups provide older residents in particular, with needed support. These people rarely benefit from other activities such as U3A given their limited English language skills, particular cultural needs and often their lack of familiarity with and access to technology. A recent review on such community groups has underlined their important role in combatting loneliness and isolation. We note there is no plan to cut the Community Grants but remain concerned that new funding priorities may limit access for these groups. Similarly, we are concerned that the redirection of funding to support what has been hitherto funded by the Neighbourhood Grants may also limit access for these groups.
- We are pleased that a review will be conducted regarding the decision to cut ASSIST Counter Services in Port Melbourne and South Melbourne. Both these areas have large percentages of minority residents, many of whom are older, have limited English language skills and access to technology. Travelling to St Kilda may add a layer of difficulty and therefore provide a disincentive to those wishing to lodge an issue with ASSIST. This may be exacerbated if the Community Bus does not travel between the St Kilda Town Hall and these areas.
- We note the considerable reduction in spending for libraries. We seek assurance that this reduction will not cut into resources available in languages other than English. Books and other materials written in community languages are important for minority communities, especially members who cannot access such material readily because of financial and other reasons. This is important for those who may not read English, but also children and grandchildren wishing to maintain their family languages.
- With regard to the Youth Leadership and Engagement programme we are concerned about any disproportionate impact these decisions may have on groups within our community with limited access to support and opportunity. We understand for example, that young people residing in Park Towers are experiencing increased challenges as the employment market becomes more competitive. We seek information on the cultural, linguistic and religious backgrounds and length of residency in Australia, of those who are supported through this programme. There may be a need to

consider ways of engaging particularly marginalised young people in the future when the programme resumes.

- We seek further information regarding which groups of children are most likely to be disengaged from early education and whether the decision to suspend the Early Education Partnership will have a disproportionate impact on migrant children. We seek clarification regarding how this change sits with the City of Port Phillip's Children's Policy which emphasises reaching the most vulnerable children.
- Star Health supports some of the most vulnerable groups in our city. The cessation of pre-school dental checks will affect groups facing financial hardship as already noted by the Council. It is highly likely that migrant children will be some of those most affected by this decision. Whilst the responsibility sits with other agencies, we ask that the Council monitor the outcomes of this decision for further consideration into the future.

### Economic and social recovery for multicultural communities

In line with the priorities of the MAC we would like to draw attention to the following issues;

- An emphasis needs to be given to employment and retraining opportunities for those who have lost jobs, many of whom are migrants and international students.
- Supporting migrant businesses needs to be a priority, particularly given many of these provide employment opportunities for otherwise vulnerable people within our community.
- A coherent communication strategy needs to be developed for migrant communities. This need has been highlighted by the current crisis in public housing in other parts of Melbourne. An approach that utilises multiple communication methods is beneficial as we cater for various languages, levels of literacy and preferred ways of communicating. Strategies including working with community leaders to distribute information, using technologies already popular within CALD communities such as Facebook, distributing posters and using audio and video messaging with communities whose members may not be literate in any language. Relevant forms of communication are vital at a time when understanding the current crisis can save lives.
- Strategies need to be developed that provide CALD community members affected by homelessness to become visible and have a direct voice in decision-making. Housing and homelessness is a critical issue for members of CALD communities who can often remain invisible in related discussions. Any Council plan needs to be culturally inclusive. We cannot assume that a 'one size fits all' approach is going to be successful given the diversity of needs, experiences and levels of vulnerability of diverse groups.
- We welcome the emphasis placed on digital literacies. We would like to highlight that members of CALD communities have additional needs. Many older members of minority communities often lack computer skills and do not have access to computers and the internet in order to learn. This is also the case for many ultra-orthodox Jews. As we physically isolate, the lack of digital literacy is increasingly problematic. We seek

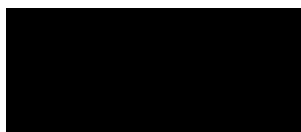
assurances that strategies in this area will take account of those with specific cultural and linguistic needs.

- The current health crisis is exacerbating a number of existing problems including social isolation. We understand that those already vulnerable may be further disadvantaged. Older members of migrant communities, for example who have relied on face to face contact in culturally appropriate activities will find it more difficult to maintain social contact, especially given they often lack computer access. International students, newly arrived migrants, refugees and asylum seekers are likely to become increasingly isolated. Groups such as these will become increasingly vulnerable to physical and mental health problems. Strategies designed to overcome social isolation must cater for the needs of particular communities through inclusive approaches.
- There needs to be a 'watch and see' brief on any possible threats to social cohesion within Port Phillip. There have been examples of racism within the area including offensive graffiti on Jewish facilities and the need for increased security at some. There have also been examples of divisive discourses including with reference to visible minorities. Minority groups such as the Chinese, Moslem and Sudanese communities have been public about experiencing increased levels of violence and hate speech. The Council needs to provide positive messages about our diverse community, in a range of ways, especially if the *Diversity* magazine moves to an on-line only format.
- In line with our charter to provide advice to Council, the MAC should be one of the groups with which the Council needs to consult regarding priorities for the next 4 years. In the current document no reference is made the MAC (see page 55).
- We seek assurances that staff who currently support the work of the MAC and support members of ethnic communities, including for purposes of applying for various grants, will continue to provide this support.

We understand that cuts need to be made, however the overall investment by Port Phillip on programmes that cater specifically for cultural minorities is not overwhelming. Maintaining a vibrant community that celebrates diversity requires us to constantly monitor the needs and contributions made by minority communities.

We are pleased to be able to provide you with this budget submission and would be open to further conversations about the issues raised, including a request to speak to this document on 5 August.

Yours sincerely



Chair

## Multicultural Advisory Committee Action Plan 2020/21

HIGH
MEDIUM
LOW

Theme	Council Plan 2017-2027	Welcoming Cities	Actions 2020	Priority	Timeframe
Leadership	<p><b>DIRECTION 1</b> We embrace difference, and people belong</p> <p>A safe and active community with strong social connections.</p> <p>B. Supporting programs that create social connections and strengthen community networks.</p> <p>C. Building community capacity by harnessing the knowledge, expertise and spirit within our community.</p> <p>Access to services that support the</p>	<p><b>1.1</b> The local council recognises Aboriginal and Torres Strait Islander people as the First Peoples of this Nation and seek to engage local Indigenous communities in welcoming work.</p> <p>1.11 Actively working towards reconciliation with Aboriginal and Torres Strait Islander people and communities.</p> <p>1.12 Formally acknowledging Traditional Owners through collaboration with elders past, present and future in policies, initiatives and public events.</p>	1. Formal acknowledgment of country at all Multicultural Advisory Committee meetings.	HIGH	Ongoing
			2. Pilot a Council run Aboriginal walking tour in St Kilda targeting newly arrived migrants.	LOW	2020/21
			3. Provide rich grassroots advice and feedback to Council regarding policy drafting and program assessment/evaluation.	HIGH	Ongoing
			4. Support and advise Council about the <a href="#">"Back your neighbour"</a> (Local Government Mayoral Taskforce	MEDIUM	Ongoing

	<p><b>health and wellbeing of our growing community</b></p> <p>A. Facilitating access to relevant services that cater for all ages and life stages.</p> <p>D. Pursuing universal accessibility for people with disabilities, children and older people.</p> <p><b>Community diversity is valued and celebrated</b></p> <p>A. Supporting programs and events that engage, honour and are inclusive of our diverse social and cultural communities.</p> <p>C. Protecting and promoting Aboriginal culture and heritage, and continuing reconciliation with our Indigenous community.</p>	<p>1.13 Facilitating opportunities for migrant communities to learn about Aboriginal and Torres Strait Islander culture.</p> <p>1.2 The local council partners with diverse stakeholders to promote a welcoming culture through advocacy and communication activities across various platforms.</p> <p>1.22 Messaging that communicates the community-wide benefit of cultural diversity and inclusion and the benefits of migration and settlement.</p> <p>1.23 Presenting narratives that communicate positive migrant stories and contributions.</p> <p>1.24 Supporting and promoting events and activities representative of the diversity of the local community.</p> <p>1.3 The local council supports and promotes</p>	<p>Supporting People Seeking Asylum) campaign.</p> <p>5. Provide input into the development of multicultural communications plan.</p> <p>6. Provide input into the development of recommendations for the “Future Ready”, Port Phillip Multicultural Senior Groups Review. Council plays a vital role in ensuring that these groups/organisations are supported to enable them to provide activities that benefit the physical and mental health of club members and to promote the social wellbeing and connectedness of groups members.</p> <p>7. Work toward City of Port Phillip becoming part of the <a href="#">Welcoming</a></p>	<p>HIGH</p> <p>HIGH</p> <p>LOW</p>	<p>July-Dec 2020</p> <p>March-Dec 2020</p> <p>March 2021</p>
--	--	---	---	------------------------------------	--

		<p><b>activities and initiatives that nurture connections between migrant and receiving communities.</b></p> <p>1.32 Identifying and facilitating opportunities that bring together representatives from migrant communities and receiving communities to discuss community issues.</p> <p>1.41 Engaging diverse stakeholders, from both migrant communities and receiving communities, in the development, implementation and maintenance of the plans.</p> <p>1.42 Developing a stakeholder reference group that reflects the diversity of the community.</p> <p>1.43 Assessing the priorities of the local community and using that feedback to improve the plans.</p>	<p><a href="#">Cities network (Assessment &amp; Accreditation - Commitment)</a></p>		
--	--	---	---	--	--

<b>Social and Cultural Inclusion</b>	<p><b>DIRECTION 1 We embrace difference, and people belong</b></p> <p><b>A safe and active community with strong social connections</b></p> <p><b>B. Supporting programs that create social connections and strengthen community networks.</b></p> <p><b>C. Building community capacity by harnessing the knowledge, expertise and spirit within our community.</b></p> <p><b>An increase in affordable housing</b></p> <p><b>Access to services that support the</b></p>	<p><b>2.1 The local council's policies and practices actively include and engage both receiving and migrant communities.</b></p> <p>2.12 Ensuring that the development, implementation and review of council policies, strategies, programs and initiatives are compliant with Federal and State legislation for racial and religious non-discrimination and take into account the principles of substantive equality.</p> <p>2.15 Supporting initiatives that empower individuals to prevent, and respond effectively to, racism and discrimination.</p>	<ol style="list-style-type: none"> <li>Promote cultural exchange and social connection: events and programs (e.g. arts, culture, heritage, social, sports) such as Cultural Diversity Week and Refugee Week</li> <li>Provide input on the <a href="#">Our Backyard Community Forum</a> and Port Phillip Zero.</li> <li>Provide input on the development of Council's Language access guidelines.</li> </ol>	<p><b>MEDIUM</b></p> <p><b>LOW</b></p> <p><b>HIGH</b></p>	<p>March 2020, June 2020, March 2021</p> <p>On hold</p> <p>June-Dec 2020</p>

	<p><b>health and wellbeing of our growing community</b></p> <p>A. Facilitating access to relevant services that cater for all ages and life stages.</p> <p>D. Pursuing universal accessibility for people with disabilities, children and older people.</p> <p><b>Community diversity is valued and celebrated</b></p> <p>A. Supporting programs and events that engage, honour and are inclusive of our diverse social and cultural communities.</p>	<p><b>2.2 The local council facilitates diverse cultural expression through a range of activities and observances.</b></p> <p>2.21 Celebrating community festivals, cultural events, and religious observances that represent diversity and encourage dialogue.</p> <p>2.22 Encouraging programs and initiatives that bring together diverse cultures and support opportunities for cultural expression and intercultural understanding.</p> <p><b>2.3 The local council facilitates language access.</b></p> <p>2.31 Assessing language needs for migrant communities to increase access to services and activities.</p> <p>2.32 Engaging accredited translators or interpreters in council services and related events.</p> <p>2.33 Providing information on council</p>			
--	---	--	--	--	--



		<p>services, and resident information guides in community languages.</p> <p>2.34 Providing accessible Council feedback and complaints processes.</p> <p><b>2.4 The local council partners with government, business and community stakeholders to promote affordable, safe and accessible housing, health, justice and transport services for all residents.</b></p> <p>2.42 Advising stakeholders in the development of local community housing and affordable housing initiatives.</p>			
<b>Economic Development</b>	<p>DIRECTION 1 We embrace difference, and people belong</p> <p><b>A safe and active community with strong social connections</b></p> <p>B. Supporting programs that create social connections and strengthen community networks.</p>	<p><b>3.1 The local council employs a workforce that is inclusive and diverse.</b></p> <p>3.11 Identifying and addressing barriers and unconscious bias, which may limit diversity and inclusion in employment practices.</p> <p>3.12 Highlighting the value of a diverse workforce and encouraging applicants from diverse backgrounds to apply.</p>	<ol style="list-style-type: none"> <li>1. Provide input on Council's Social Procurement working group as part of Council's corporate responsibility.</li> <li>2. Advocate for Council to sign a memorandum of understanding with "<a href="#">Given a Chance Program</a>" or alike programs. Given the Chance is a</li> </ol>	<p>LOW</p> <p>LOW</p>	<p>June-Dec 2020</p> <p>2021</p>

	<p>C. Building community capacity by harnessing the knowledge, expertise and spirit within our community.</p> <p><b>Community diversity is valued and celebrated</b></p> <p>A. Supporting programs and events that engage, honour and are inclusive of our diverse social and cultural communities.</p>	<p><b>3.2 The local council advances local business sourcing and contracting.</b></p> <p>3.21 Addressing the barriers for local businesses to access council tendering and contracting opportunities.</p> <p>3.22 Reviewing procurement policies and practice and identifying opportunities to engage local suppliers.</p> <p><b>3.4 The local council supports both receiving and migrant communities to advance economic development opportunities.</b></p>	<p>Brotherhood program supporting disadvantaged job seekers such as asylum seekers into paid employment by partnering with a variety of business across different industries</p> <p>3. Facilitate community employment sessions and general information sessions for newly arrived migrants</p>	<p><b>HIGH</b></p>	<p>June – March 2021</p>
<p><b>Learning &amp; Skill Development</b></p>	<p><b>DIRECTION 1 We embrace difference, and people belong</b></p> <p><b>A safe and active community with strong social connections</b></p> <p>A. Providing access to flexible, multipurpose facilities that support participation in community life through sport,</p>	<p><b>4.1 The local council works closely with community facilities such as schools and libraries to support learning and inclusion for migrant communities.</b></p> <p>4.12 Facilitating programs and initiatives that ensure library and/or related services are accessible and support targeted learning opportunities for migrant communities.</p>	<p>1. Work collaboratively with Council library services to influence programming for migrants.</p> <p>2. Provide feedback to library services in relations to the composition of Council’s multilingual book collection.</p>	<p><b>LOW</b></p> <p><b>LOW</b></p>	<p>On hold</p> <p>On hold</p>

	<p>recreation and lifelong learning.</p> <p><b>Access to services that support the health and wellbeing of our growing community</b></p> <p>A. Facilitating access to relevant services that cater for all ages and life stages.</p> <p>D. Pursuing universal accessibility for people with disabilities, children and older people.</p> <p><b>Community diversity is valued and celebrated</b></p> <p>A. Supporting programs and events that engage, honour and are inclusive of our diverse social and cultural communities.</p>	<p>4.13 Supporting learning and skills development opportunities for children and young people from migrant communities through collaboration with schools and other services.</p> <p><b>4.2 The local council encourages learning and skills development opportunities that enable people from migrant communities to participate in community life.</b></p> <p>4.23 Identifying and delivering professional development for council staff that increases their capacity and skills to engage with and respond appropriately and effectively to the needs of a culturally diverse community.</p>			
--	--	---	--	--	--

	<p><b>Direction 5 We thrive by harnessing creativity</b></p> <p><b>We thrive by harnessing creativity</b> C. Transforming our library services and spaces to support inclusive, creative opportunities and learning outcomes.</p>				
<b>Civic Participation</b>	<p><b>DIRECTION 1 We embrace difference, and people belong</b></p> <p><b>A safe and active community with strong social connections</b> C. Building community capacity by harnessing the knowledge, expertise and spirit within our community.</p>	<p><b>5.1 The local council communicates their roles and responsibilities and advances civic participation for both receiving and migrant communities.</b></p> <p>5.12 Encouraging and supporting the participation of culturally diverse groups in public council meetings and forums.</p> <p>5.13 Promoting and supporting the participation of representatives from culturally diverse groups, including young people and seniors, in council</p>	<p>1. Facilitate “Active Citizenship” workshops by Victorian Electoral Commission targeting multicultural commission prior to Council elections in October 2020.</p>	<b>LOW</b>	On hold

		<p>committees, advisory and reference groups.</p> <p><b>5.3 The local council supports all eligible residents to enrol to vote and participate in local government elections.</b></p> <p>5.31 Working with the State Government and/or Electoral Commissions to eliminate barriers to voting.</p>			
<b>Places and Spaces</b>	<p><b>DIRECTION 1 We embrace difference, and people belong</b></p> <p><b>A safe and active community with strong social connections</b></p> <p>A. Providing access to flexible, multipurpose facilities that support participation in community life through sport, recreation and lifelong learning.</p>	<p><b>6.2 Public spaces and facilities encourage community interaction and facilitate diverse cultural expression and celebration.</b></p> <p>6.21 Enabling the use of public spaces and facilities by people who represent the diversity of the community.</p> <p>6.31 Supporting initiatives that communicate the significance of cultural stories in public spaces and facilities.</p>	1. Provide input on Council’s Heritage review, Living Heritage Program and Heritage Recognition	LOW	On hold
			2. Advocate for welcome signage across all Council facilities	MEDIUM	June 2020– March 2021
			3. Provide input into the development of a protocol for the Welcome Refugee Banners	MEDIUM	June 2020 – March 2021
			4. Enable the use of public spaces and facilities by people who	MEDIUM	On hold

	<p><b>Community diversity is valued and celebrated</b>  A. Supporting programs and events that engage, honour and are inclusive of our diverse social and cultural communities.</p> <p><b>DIRECTION 4 We are growing and keeping our character</b></p> <p><b>A City of diverse and distinctive neighbourhoods and places</b>  B. Protecting heritage places that represent our historic, social, cultural and architectural identity.  C. Ensuring new development integrates with, respects and contributes to the unique heritage, character and beauty of our neighbourhoods.</p>		<p>represent the diversity of the community.</p>		
--	--	--	--	--	--

--	--	--	--	--	--