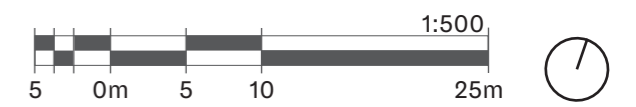
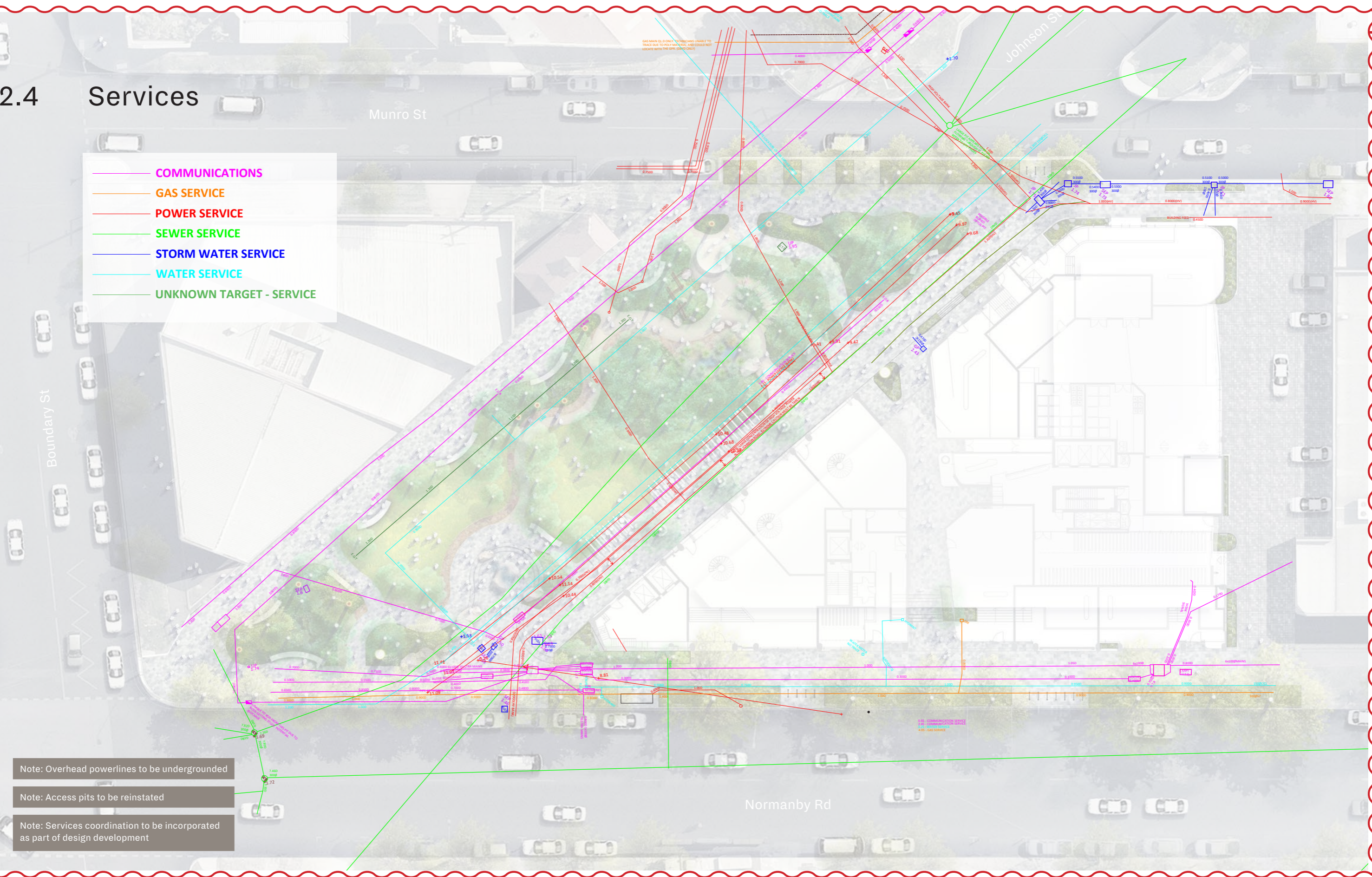


2.3 Park/ Development Scope



2.4 Services

- COMMUNICATIONS
- GAS SERVICE
- POWER SERVICE
- SEWER SERVICE
- STORM WATER SERVICE
- WATER SERVICE
- UNKNOWN TARGET - SERVICE



Note: Overhead powerlines to be undergrounded

Note: Access pits to be reinstated

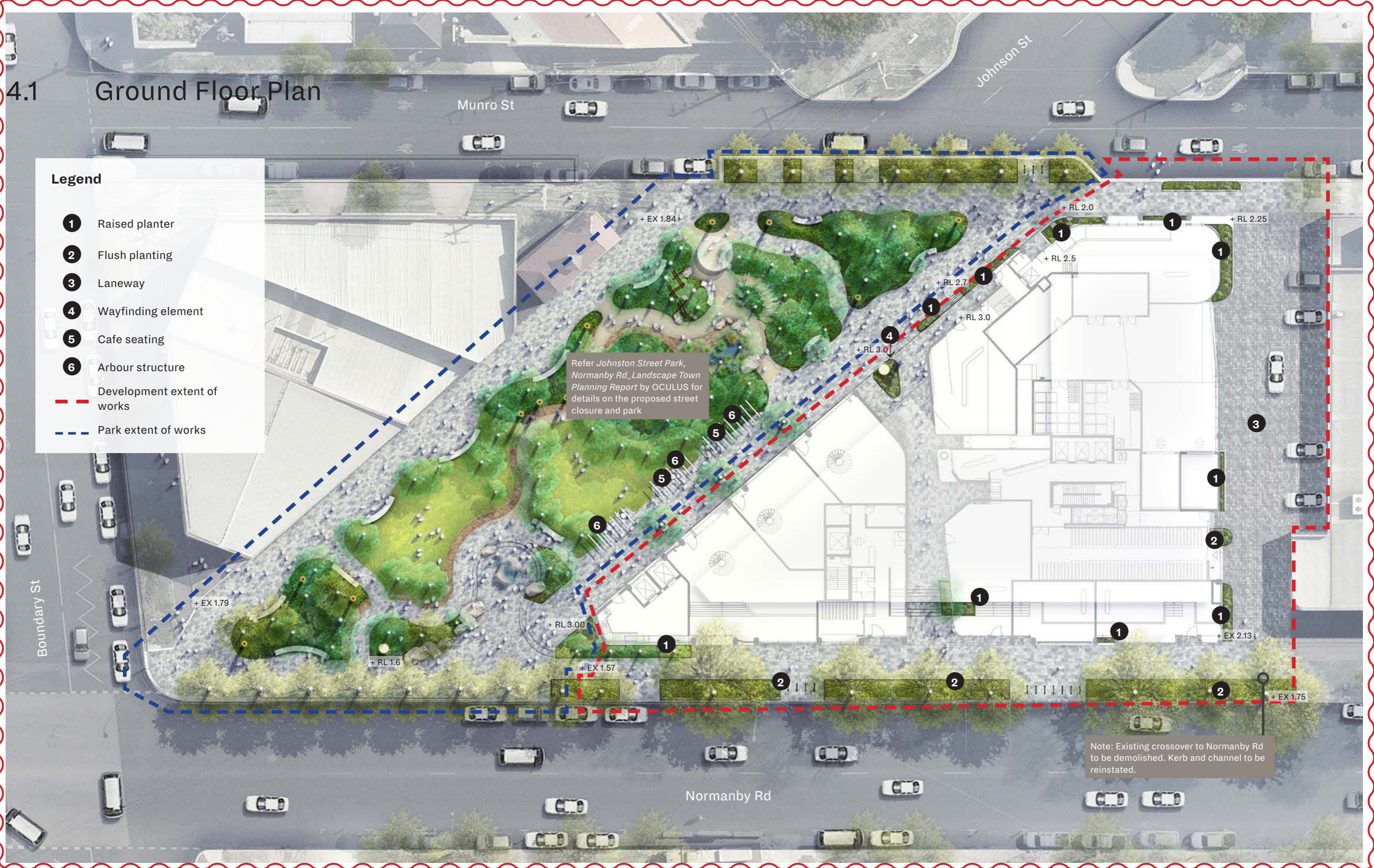
Note: Services coordination to be incorporated as part of design development



4.1 Ground Floor Plan

Legend

- 1 Raised planter
- 2 Flush planting
- 3 Laneway
- 4 Wayfinding element
- 5 Cafe seating
- 6 Arbour structure
- - - Development extent of works
- - - Park extent of works

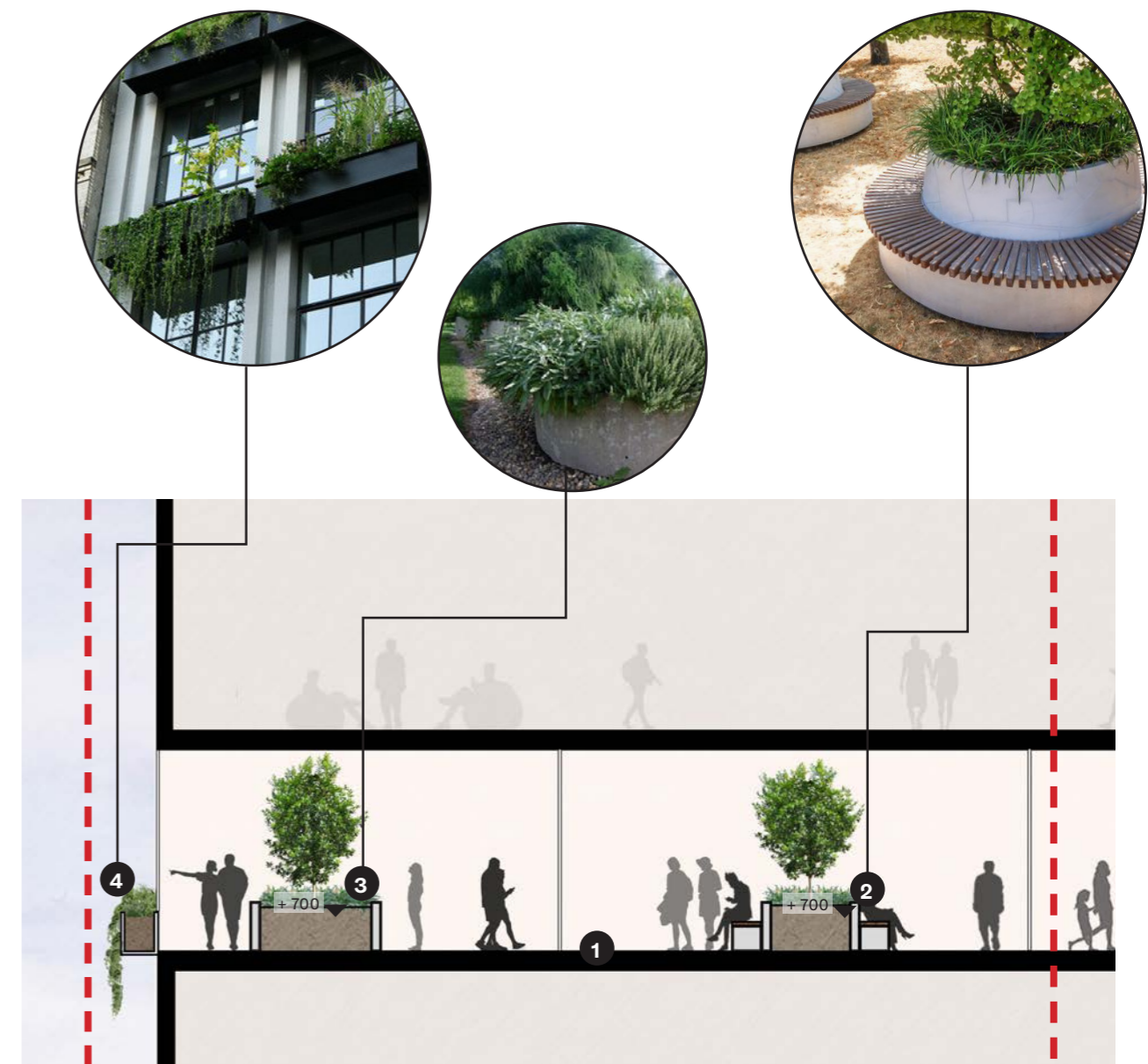


Refer *Johnston Street Park, Normanby Rd. Landscape Town Planning Report* by OCULUS for details on the proposed street closure and park

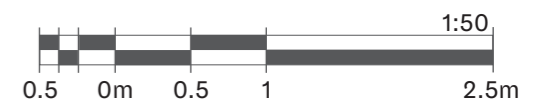
Note: Existing crossover to Normanby Rd to be demolished. Kerb and channel to be reinstated.



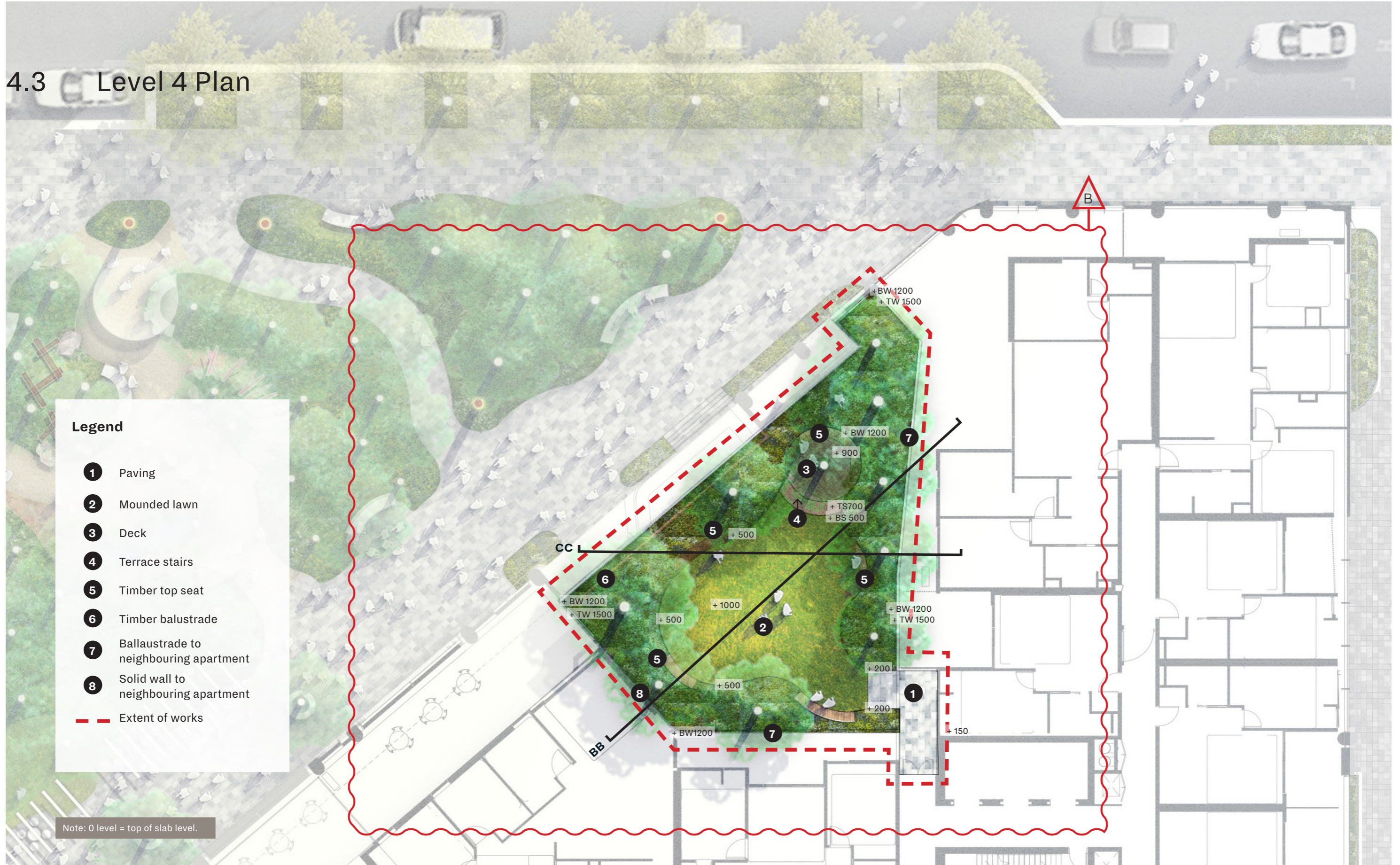
4.2 Level 3 Plan and Section



Section AA



4.3 Level 4 Plan



Legend

- 1 Paving
- 2 Mounded lawn
- 3 Deck
- 4 Terrace stairs
- 5 Timber top seat
- 6 Timber balustrade
- 7 Ballustrade to neighbouring apartment
- 8 Solid wall to neighbouring apartment
- - - Extent of works

Note: 0 level = top of slab level.



4.4 Level 4 section

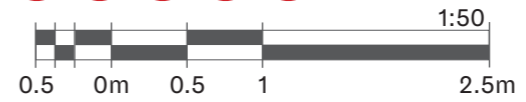


B

Note: All planting on structure to be irrigated and meet the following minimum depths:
 Trees: 1000
 Shrubs: 450
 Lawn: 300

Note: 0 level = top of slab level

- Legend**
- 2 Mounded lawn
 - 3 Deck
 - 4 Terrace stairs
 - 5 Timber top seat
 - 8 Solid wall to neighbouring apartment
 - 9 Deep planting
 - 10 Void former
 - - - Extent of works



4.5 Level 4 section



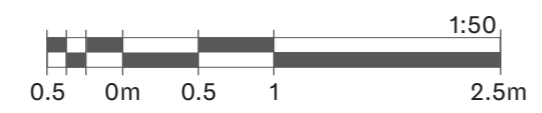
Note: All planting on structure to be irrigated and meet the following minimum depths:
 Trees: 1000
 Shrubs: 450
 Lawn: 300

Note: 0 level = top of slab level

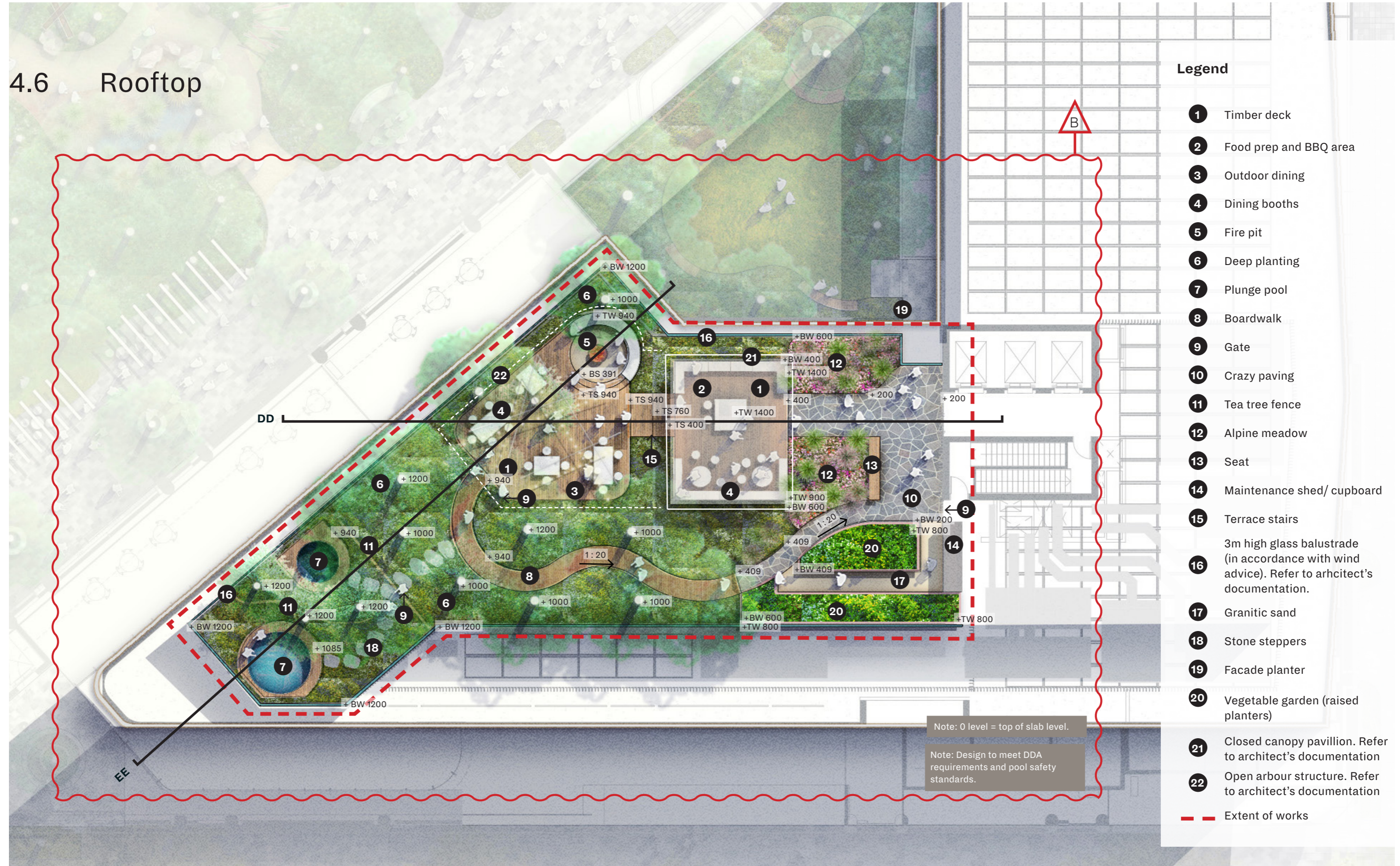
Legend

- 2 Mounded lawn
- 3 Deck
- 4 Terrace stairs
- 5 Timber top seat
- 6 Timber balustrade
- 7 Ballustrade to neighbouring apartment
- 8 Solid wall to neighbouring apartment
- 9 Deep planting
- 10 Void former
- - - Extent of works

Section CC



4.6 Rooftop

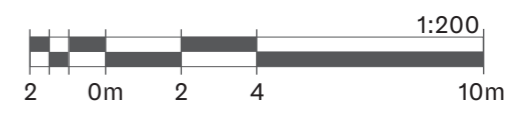


Legend

- 1 Timber deck
- 2 Food prep and BBQ area
- 3 Outdoor dining
- 4 Dining booths
- 5 Fire pit
- 6 Deep planting
- 7 Plunge pool
- 8 Boardwalk
- 9 Gate
- 10 Crazy paving
- 11 Tea tree fence
- 12 Alpine meadow
- 13 Seat
- 14 Maintenance shed/ cupboard
- 15 Terrace stairs
- 16 3m high glass balustrade (in accordance with wind advice). Refer to architect's documentation.
- 17 Granitic sand
- 18 Stone steppers
- 19 Facade planter
- 20 Vegetable garden (raised planters)
- 21 Closed canopy pavilion. Refer to architect's documentation
- 22 Open arbour structure. Refer to architect's documentation
- - - Extent of works

Note: 0 level = top of slab level.

Note: Design to meet DDA requirements and pool safety standards.



4.7 Rooftop Section

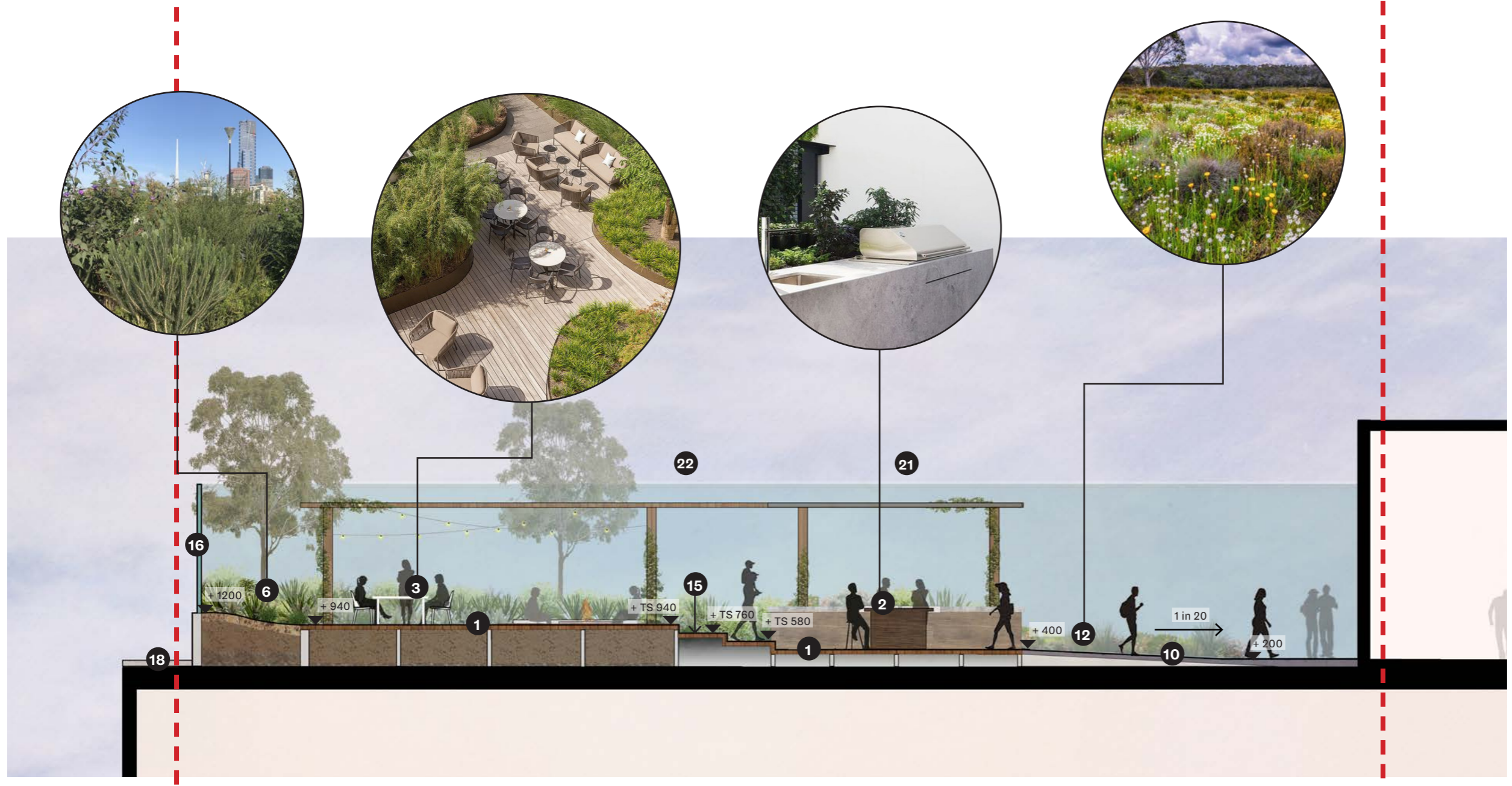
B

Note: All planting on structure to be irrigated and meet the following minimum depths:
 Trees: 1000
 Shrubs: 450
 Lawn: 300

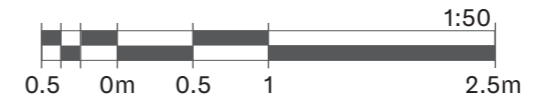
Note: Architecture, pavillion and arbour indicative only. Refer to Hayball for architecture.

Legend

- 1 Timber deck
- 2 Food prep and BBQ area
- 3 Outdoor dining
- 6 Deep planting
- 10 Crazy paving
- 12 Alpine meadow
- 15 Terrace stairs
- 16 3m high glass balustrade (in accordance with wind advice). Refer to architect's documentation.
- 21 Closed canopy pavillion. Refer to architect's documentation
- 22 Open arbour structure. Refer to architect's documentation
- Extent of works

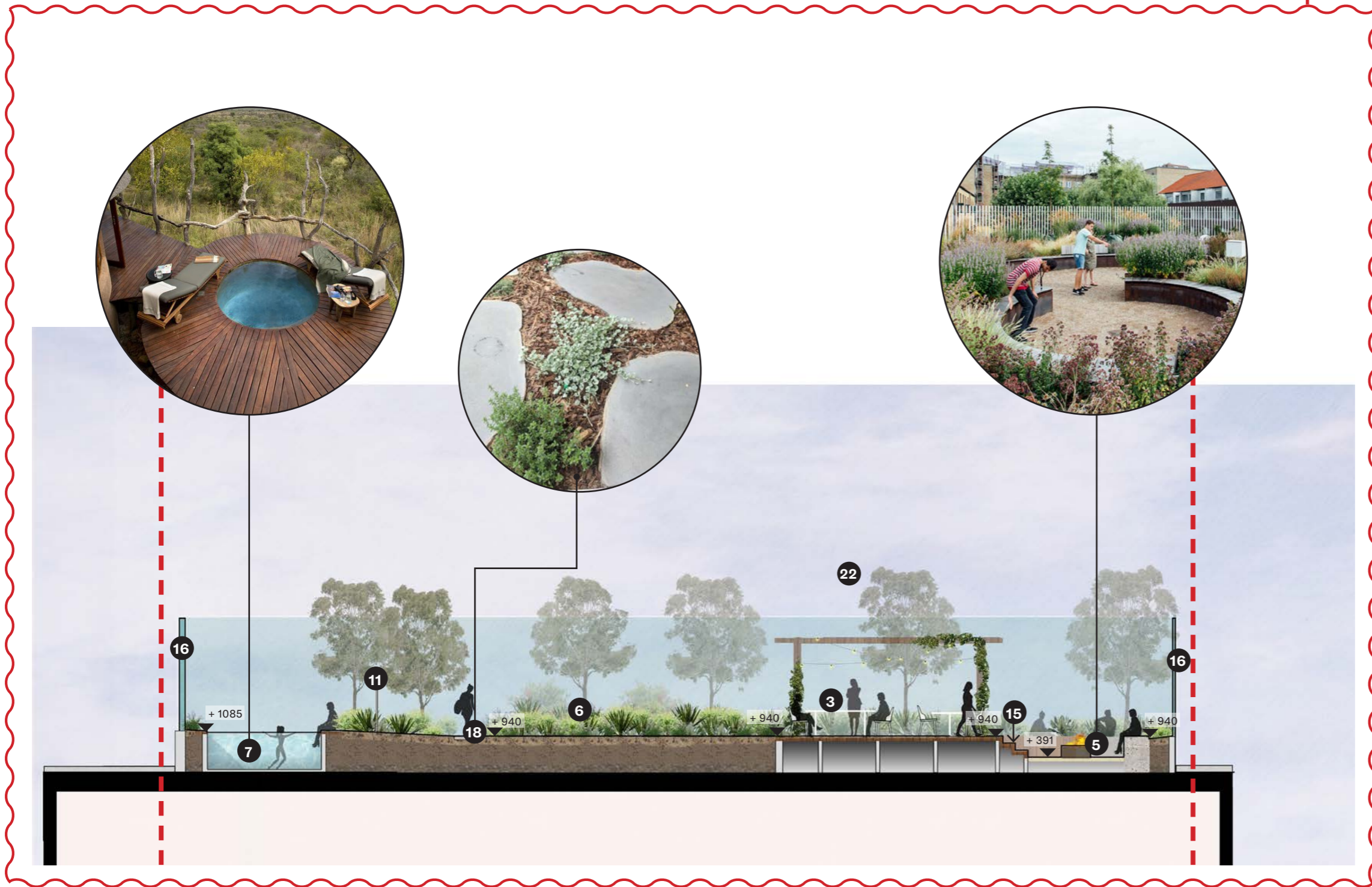


Section DD



4.8 Rooftop Section

B



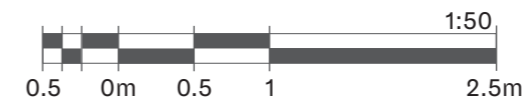
Note: All planting on structure to be irrigated and meet the following minimum depths:
 Trees: 1000
 Shrubs: 450
 Lawn: 300

Note: Design to meet DDA requirements and pool safety standards.

Legend

- 1 Timber deck
- 3 Outdoor dining
- 5 Fire pit
- 6 Deep planting
- 7 Plunge pool
- 11 Tea tree fence
- 15 Terrace/ stairs
- 16 Glass balustrade
- 18 Stone steppers
- 22 Open arbour structure. Refer to architect's documentation
- - - Extent of works

Section EE



View 01 - Ground Floor Park Interface



Note: Early artistic impression.
Reflects general design intent only

4.10 View 02 - Ground Floor Normanby Rd Entrance



Note: Early artistic impression.
Reflects general design intent only

Image: Ground floor Normanby Rd entrance

4.11 View 03 - Level 3



Note: Early artistic impression.
Reflects general design intent only

5.1 Park to Development Visual connection



Acacia baileyana 'Prostrata'
Cootamundra Wattle



Leptospermum lanigerum
Woolly Teatree



Acacia dealbata
Silver Wattle



Leptospermum myrsinoides
Silky Tea-tree

