

50 Queens Road Drawing List

Check all dimensions and site conditions prior to commencement of any work, the purchase or ordering of any materials, fittings, plant, services or equipment and the preparation of shop drawings and or the fabrication of any components.

Do not scale drawings - refer to figured dimensions only. Any discrepancies shall immediately be referred to the architect for clarification.

All drawings may not be reproduced or distributed without prior permission from the architect.

Drawing List			
Sheet Number	Sheet Series	Sheet Name	Current Revision
TP00 - Title Sheet / Drawing List			
TP00.00		Drawing Schedule	C
TP01 - Site Information			
TP01.00	Site Information	Location & Site Plan	B
TP01.02	Site Information	Demolition Plan	B
TP03 - General Arrangement Plans			
TP03.00	General Arrangement	Ground Floor	B
TP03.01	General Arrangement	Level 01	B
TP03.02	General Arrangement	Level 02	B
TP03.03	General Arrangement	Level 03	B
TP03.04	General Arrangement	Level 04 - 08	B
TP03.09	General Arrangement	Level 09 - 11	B
TP03.12	General Arrangement	Level 12 - 13	B
TP03.14	General Arrangement	Level 14	C
TP03.15	General Arrangement	Roof Plant	B
TP03.B01	General Arrangement	Basement Level 01	B
TP03.B01M	General Arrangement	Basement Level 01 Mezzanine	A
TP03.B02	General Arrangement	Basement Level 02	B
TP03.B03	General Arrangement	Basement Level 03	B
TP09 - External Elevations			
TP09.00	External Elevations	North Elevation	B
TP09.01	External Elevations	East Elevation	B
TP09.02	External Elevations	South Elevation	B
TP09.03	External Elevations	West Elevation	B
TP09.04	External Elevations	Courtyard Elevations	B
TP10 - Building Sections			
TP10.00	Building Sections	East - West Section 01	B
TP10.01	Building Sections	East - West Section 02	B
TP10.02	Building Sections	North - South Section 01	B
TP10.03	Building Sections	North - South Section 02	B

Rev	Date	Description	Initial	Checked
C	07.03.23	VCAT Submission Issue	CL	DR
B	07.03.23	VCAT Submission Issue	CL	DR
A	01.06.22	Planning Permit Issue		
2	20.05.22	Schedule updated		
1	03.05.22	Draft - issued for coordination	ZJ	RB

50 QUEENS RD

Drawing Schedule

Status	FOR COORDINATION		
Scale	@ A1		
Drawn	ZJ	Checked	RB
Project No.	M12568		
Plot Date	7/03/2023 10:17:49 AM		

Drawing no.	Revision
TP00.00	C

Melbourne 1 Nicholson Street
Melbourne VIC 3000 Australia
T 03 8664 6200 F 03 8664 6300
email mel@batesmart.com.au
http://www.batesmart.com.au

Sydney 43 Brisbane Street
Surry Hills NSW 2010 Australia
T 02 8354 5100 F 02 8354 5199
email syd@batesmart.com.au
http://www.batesmart.com.au

Bates Smart Pty Ltd ABN 70 004 999 400

BATESSMART

Check all dimensions and site conditions prior to commencement of any work, the purchase or ordering of any materials, fittings, plant, services or equipment and the preparation of shop drawings and or the fabrication of any components.

Do not scale drawings - refer to figured dimensions only. Any discrepancies shall immediately be referred to the architect for clarification.

All drawings may not be reproduced or distributed without prior permission from the architect.



B	07.03.23	VCAT Submission Issue	CL	DR
A	01.06.22	Planning Permit Issue		
1	03.05.22	Draft - issued for coordination	ZJ	RB
Rev	Date	Description	Initial	Checked

50 QUEENS RD

Site Information Location & Site Plan



Status	FOR COORDINATION		
Scale	1 : 500	@	A1
Drawn	YX / ZJ	Checked	RB
Project No.	M12568		
Plot Date	6/03/2023 5:48:57 PM		

BIM	
Drawing no.	Revision
TP01.00	B

Melbourne 1 Nicholson Street
Melbourne VIC 3000 Australia
T 03 8664 6200 F 03 8664 6300
email mel@batesmart.com.au
http://www.batesmart.com.au

Sydney 43 Brisbane Street
Surry Hills NSW 2010 Australia
T 02 8354 5100 F 02 8354 5199
email syd@batesmart.com.au
http://www.batesmart.com.au




Bates Smart Pty Ltd ABN 70 004 999 400

Check all dimensions and site conditions prior to commencement of any work, the purchase or ordering of any materials, fittings, plant, services or equipment and the preparation of shop drawings and or the fabrication of any components.

Do not scale drawings - refer to figured dimensions only. Any discrepancies shall immediately be referred to the architect for clarification.

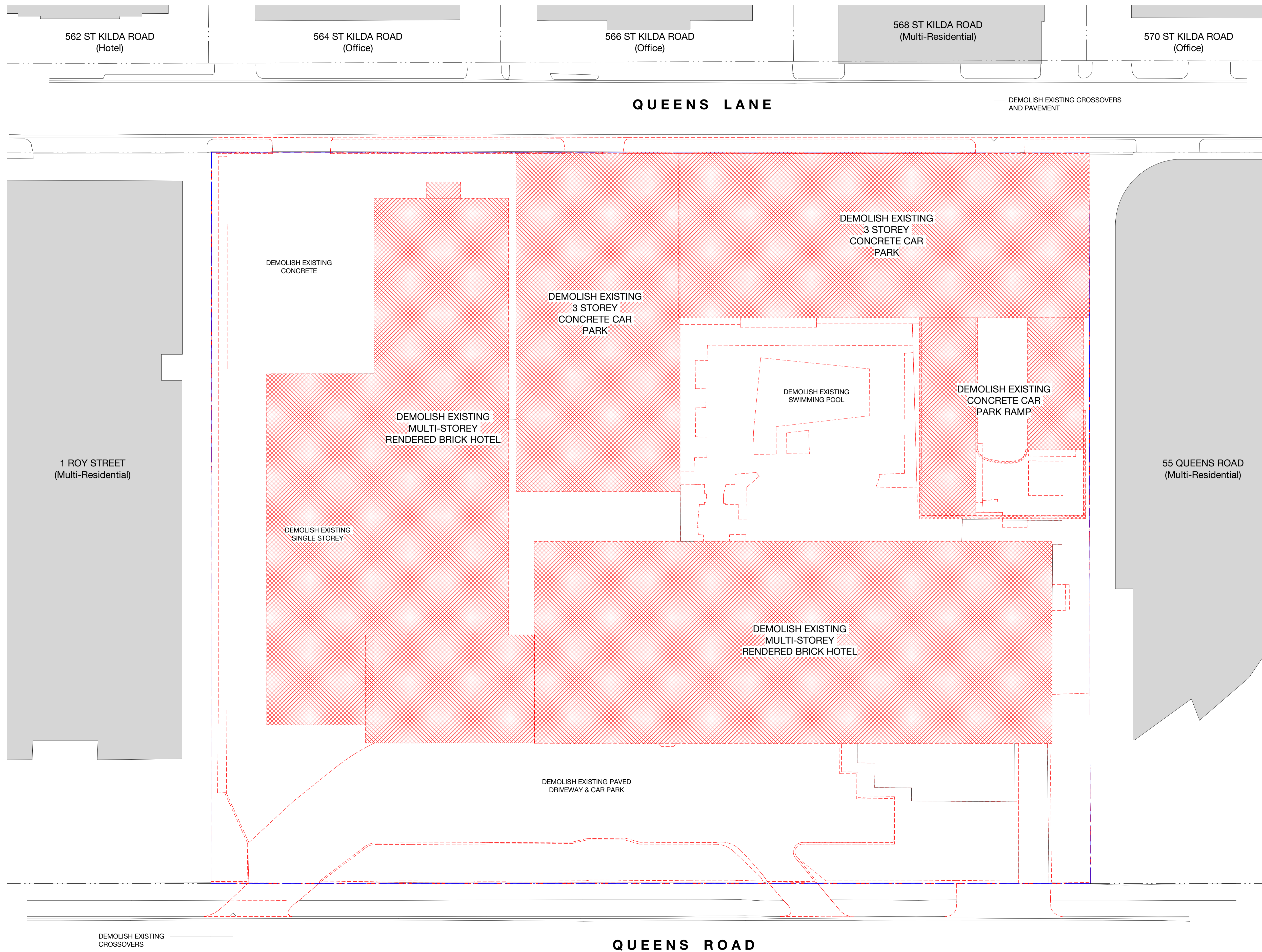
All drawings may not be reproduced or distributed without prior permission from the architect.

LEGEND - DEMOLITION PLAN

-  DEMOLITION WORKS
-  TITLE BOUNDARY
-  DEMOLITION WORKS TO EXTERNAL SLABS, LANDSCAPE, CANOPIES

NOTES:

1. In general terms, the full extent of built form on the site is to be demolished including landscape walls and external slabs



Rev	Date	Description	Initial	Checked
B	07.03.23	VCAT Submission Issue	CL	DR
A	01.06.22	Planning Permit Issue		
1	03.05.22	Draft - issued for coordination	ZJ	RB

50 QUEENS RD

Site Information Demolition Plan



Status	FOR COORDINATION		
Scale	As indicated	@ A1	
Drawn	YX / ZJ	Checked	RB
Project No.	M12568		
Plot Date	6/03/2023 5:49:29 PM		
BIM			
Drawing no.	TP01.02		Revision
			B

Melbourne 1 Nicholson Street
Melbourne VIC 3000 Australia
T 03 8664 6200 F 03 8664 6300
email mel@batesmart.com.au
http://www.batesmart.com.au

Sydney 43 Brisbane Street
Surry Hills NSW 2010 Australia
T 02 8354 5100 F 02 8354 5199
email syd@batesmart.com.au
http://www.batesmart.com.au

Bates Smart Pty Ltd ABN 70 004 999 400

Check all dimensions and site conditions prior to commencement of any work, the purchase or ordering of any materials, fittings, plant, services or equipment and the preparation of shop drawings and or the fabrication of any components.

Do not scale drawings - refer to figured dimensions only. Any discrepancies shall immediately be referred to the architect for clarification.

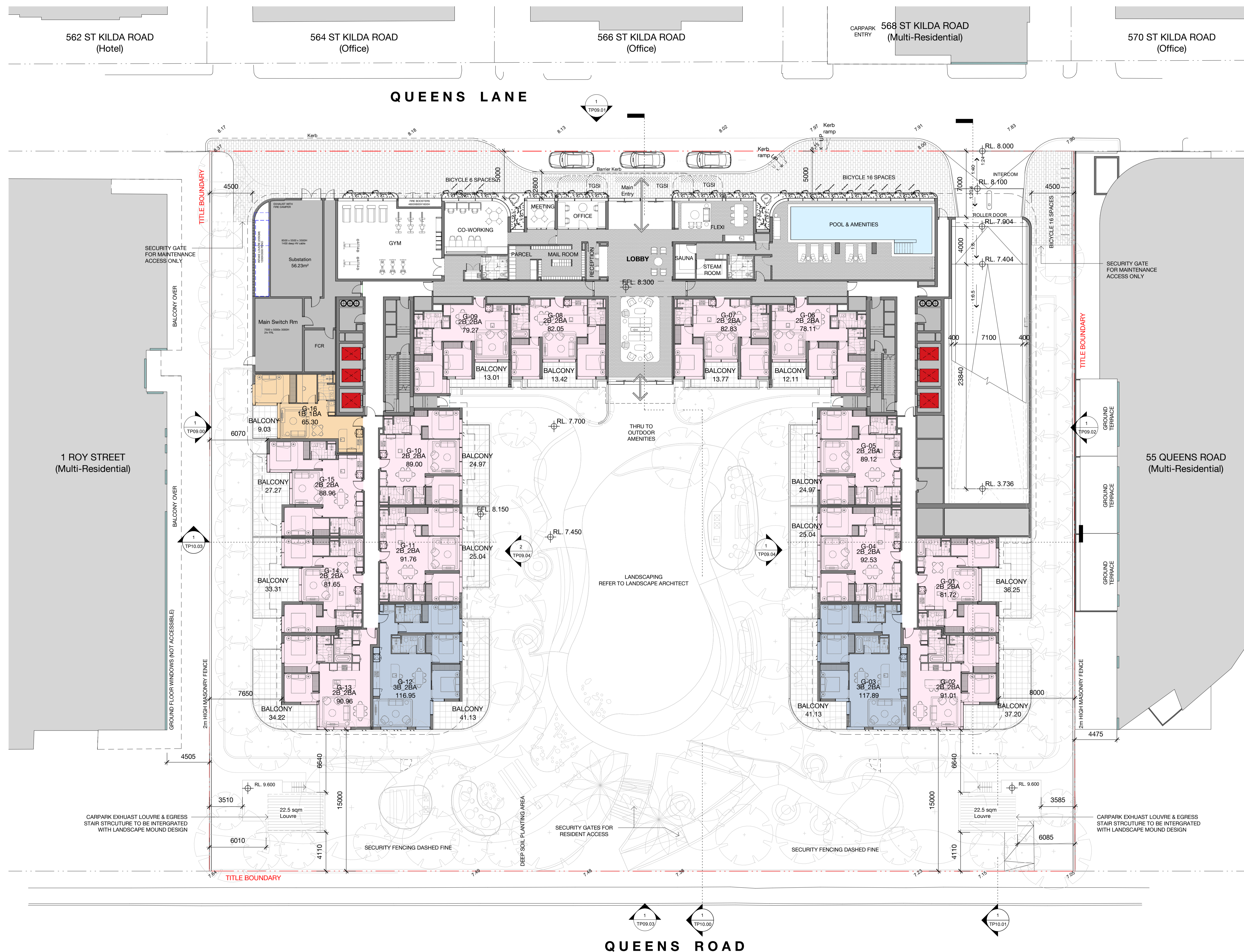
All drawings may not be reproduced or distributed without prior permission from the architect.

L00 Apartment Count

1B_1BA	1
2B_2BA	13
3B_2BA	2
TOTAL APARTMENTS:	16

Apartment Count - Whole Building

1B_1BA	89
2B_1BA	27
2B_2BA	207
3B_2BA	56
TOTAL APARTMENTS:	379



Rev	Date	Description	Initial	Checked
B	07.03.23	VCAT Submission Issue	CL	DR
9	03.03.23	Draft - issued for coordination	CL	DR
8	24.02.23	Draft - issued for coordination	CL	DR
7	02.02.23	Draft - issued for coordination	CL	DR
6	16.08.22	Draft - issued for coordination		
5	12.08.22	Draft - issued for coordination		
4	10.08.22	Draft - issued for coordination		
3	08.08.22	Draft - issued for coordination		
A	01.06.22	Planning Permit Issue		
2	18.05.22	Draft - issued for coordination	ZJ	RB
1	03.05.22	Draft - issued for coordination		

50 QUEENS RD

General Arrangement Ground Floor

Status	FOR COORDINATION		
Scale	1 : 200	@	A1
Drawn	CL	Checked	DR
Project No.	M12568		
Plot Date	7/03/2023 12:01:51 PM		
BIM			
Drawing no.	TP03.00	Revision	B

Melbourne 1 Nicholson Street
Melbourne VIC 3000 Australia
T 03 8664 6200 F 03 8664 6300
email mel@batesmart.com.au
http://www.batesmart.com.au

Sydney 43 Brisbane Street
Surry Hills NSW 2010 Australia
T 02 8354 5100 F 02 8354 5199
email syd@batesmart.com.au
http://www.batesmart.com.au

Bates Smart Pty Ltd ABN 70 004 999 400



Check all dimensions and site conditions prior to commencement of any work, the purchase or ordering of any materials, fittings, plant, services or equipment and the preparation of shop drawings and or the fabrication of any components.

Do not scale drawings - refer to figured dimensions only. Any discrepancies shall immediately be referred to the architect for clarification.

All drawings may not be reproduced or distributed without prior permission from the architect.

L01 Apartment Count

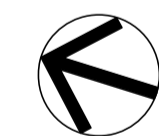
1B_1BA	8
2B_1BA	2
2B_2BA	16
3B_2BA	2
TOTAL APARTMENTS:	28



Rev	Date	Description	Initial	Checked
B	07.03.23	VCAT Submission Issue	CL	DR
5	03.03.23	Draft - issued for coordination	CL	DR
4	24.02.23	Draft - issued for coordination	CL	DR
3	02.02.23	Draft - issued for coordination	CL	DR
A	01.06.22	Planning Permit Issue		
2	18.05.22	Draft - issued for coordination	ZJ	RB
1	03.05.22	Draft - issued for coordination		

50 QUEENS RD

General Arrangement
Level 01



Status	FOR COORDINATION		
Scale	1 : 200	@ A1	
Drawn	CL	Checked	DR
Project No.	M12568		
Plot Date	6/03/2023 5:49:47 PM		
BIM			
Drawing no.	TP03.01	Revision	B

Melbourne 1 Nicholson Street
Melbourne VIC 3000 Australia
T 03 8664 6200 F 03 8664 6300
email mel@batesmart.com.au
http://www.batesmart.com.au

Sydney 43 Brisbane Street
Surry Hills NSW 2010 Australia
T 02 8354 5100 F 02 8354 5199
email syd@batesmart.com.au
http://www.batesmart.com.au

Bates Smart Pty Ltd ABN 70 004 999 400



Check all dimensions and site conditions prior to commencement of any work, the purchase or ordering of any materials, fittings, plant, services or equipment and the preparation of shop drawings and or the fabrication of any components.

Do not scale drawings - refer to figured dimensions only. Any discrepancies shall immediately be referred to the architect for clarification.

All drawings may not be reproduced or distributed without prior permission from the architect.

L02 Apartment Count

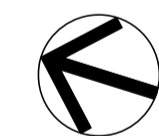
1B_1BA	6
2B_1BA	2
2B_2BA	18
3B_2BA	3
TOTAL APARTMENTS:	29



Rev	Date	Description	Initial	Checked
B	07.03.23	VCAT Submission Issue	CL	DR
5	03.03.23	Draft - issued for coordination	CL	DR
4	24.02.23	Draft - issued for coordination	CL	DR
3	02.02.23	Draft - issued for coordination	CL	DR
A	01.06.22	Planning Permit Issue		
2	18.05.22	Draft - issued for coordination	ZJ	RB
1	03.05.22	Draft - issued for coordination		

50 QUEENS RD

General Arrangement Level 02



Status	FOR COORDINATION		
Scale	1 : 200	@	A1
Drawn	CL	Checked	DR
Project No.	M12568		
Plot Date	6/03/2023 5:46:02 PM		
BIM			
Drawing no.	TP03.02	Revision	B

Melbourne 1 Nicholson Street
Melbourne VIC 3000 Australia
T 03 8664 6200 F 03 8664 6300
email mel@batesmart.com.au
http://www.batesmart.com.au

Sydney 43 Brisbane Street
Surry Hills NSW 2010 Australia
T 02 8354 5100 F 02 8354 5199
email syd@batesmart.com.au
http://www.batesmart.com.au

Bates Smart Pty Ltd ABN 70 004 999 400



Check all dimensions and site conditions prior to commencement of any work, the purchase or ordering of any materials, fittings, plant, services or equipment and the preparation of shop drawings and or the fabrication of any components.

Do not scale drawings - refer to figured dimensions only. Any discrepancies shall immediately be referred to the architect for clarification.

All drawings may not be reproduced or distributed without prior permission from the architect.

L03 Apartment Count

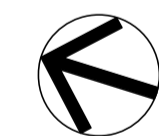
1B_1BA	6
2B_1BA	2
2B_2BA	18
3B_2BA	3
TOTAL APARTMENTS:	29



Rev	Date	Description	Initial	Checked
B	07.03.23	VCAT Submission Issue	CL	DR
6	03.03.23	Draft - issued for coordination	CL	DR
5	24.02.23	Draft - issued for coordination	CL	DR
4	17.02.23	Draft - issued for coordination	CL	DR
3	02.02.23	Draft - issued for coordination	CL	DR
A	01.06.22	Planning Permit Issue		
2	18.05.22	Draft - issued for coordination	ZJ	RB
1	03.05.22	Draft - issued for coordination		

50 QUEENS RD

**General Arrangement
Level 03**



Status	FOR COORDINATION		
Scale	1 : 200	@	A1
Drawn	CL	Checked	DR
Project No.	M12568		
Plot Date	6/03/2023 5:46:58 PM		
BIM			
Drawing no.	Revision		

TP03.03 B

Melbourne 1 Nicholson Street
Melbourne VIC 3000 Australia
T 03 8664 6200 F 03 8664 6300
email mel@batesmart.com.au
http://www.batesmart.com.au

Sydney 43 Brisbane Street
Surry Hills NSW 2010 Australia
T 02 8354 5100 F 02 8354 5199
email syd@batesmart.com.au
http://www.batesmart.com.au

Bates Smart Pty Ltd ABN 70 004 999 400

Check all dimensions and site conditions prior to commencement of any work, the purchase or ordering of any materials, fittings, plant, services or equipment and the preparation of shop drawings and or the fabrication of any components.

Do not scale drawings - refer to figured dimensions only. Any discrepancies shall immediately be referred to the architect for clarification.

All drawings may not be reproduced or distributed without prior permission from the architect.

L04 Apartment Count

1B_1BA	6
2B_1BA	2
2B_2BA	18
3B_2BA	3
TOTAL APARTMENTS:	29



Rev	Date	Description	Initial	Checked
B	07.03.23	VCAT Submission Issue	CL	DR
5	03.03.23	Draft - issued for coordination	CL	DR
4	24.02.23	Draft - issued for coordination	CL	DR
3	02.02.23	Draft - issued for coordination	CL	DR
A	01.06.22	Planning Permit Issue		
2	18.05.22	Draft - issued for coordination	ZJ	RB
1	03.05.22	Draft - issued for coordination		

50 QUEENS RD

**General Arrangement
Level 04 - 08**



Status	FOR COORDINATION		
Scale	1 : 200	@	A1
Drawn	CL	Checked	DR
Project No.	M12568		
Plot Date	6/03/2023 5:46:37 PM		
BIM			
Drawing no.	TP03.04	Revision	B

Melbourne 1 Nicholson Street
Melbourne VIC 3000 Australia
T 03 8664 6200 F 03 8664 6300
email mel@batesmart.com.au
http://www.batesmart.com.au

Sydney 43 Brisbane Street
Surry Hills NSW 2010 Australia
T 02 8354 5100 F 02 8354 5199
email syd@batesmart.com.au
http://www.batesmart.com.au

Bates Smart Pty Ltd ABN 70 004 999 400



Check all dimensions and site conditions prior to commencement of any work, the purchase or ordering of any materials, fittings, plant, services or equipment and the preparation of shop drawings and or the fabrication of any components.

Do not scale drawings - refer to figured dimensions only. Any discrepancies shall immediately be referred to the architect for clarification.

All drawings may not be reproduced or distributed without prior permission from the architect.

L09 Apartment Count

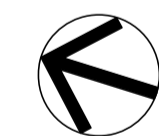
1B_1BA	8
2B_1BA	2
2B_2BA	10
3B_2BA	5
TOTAL APARTMENTS:	25



Rev	Date	Description	Initial	Checked
B	07.03.23	VCAT Submission Issue	CL	DR
5	03.03.23	Draft - issued for coordination	CL	DR
4	24.02.23	Draft - issued for coordination	CL	DR
3	02.02.23	Draft - issued for coordination	CL	DR
A	01.06.22	Planning Permit Issue		
2	18.05.22	Draft - issued for coordination	ZJ	RB
1	03.05.22	Draft - issued for coordination		

50 QUEENS RD

**General Arrangement
Level 09 - 11**



Status	FOR COORDINATION		
Scale	1 : 200	@	A1
Drawn	CL	Checked	DR
Project No.	M12568		
Plot Date	6/03/2023 5:47:18 PM		
BIM			
Drawing no.	TP03.09	Revision	B

Melbourne 1 Nicholson Street
Melbourne VIC 3000 Australia
T 03 8664 6200 F 03 8664 6300
email mel@batesmart.com.au
http://www.batesmart.com.au

Sydney 43 Brisbane Street
Surry Hills NSW 2010 Australia
T 02 8354 5100 F 02 8354 5199
email syd@batesmart.com.au
http://www.batesmart.com.au

Bates Smart Pty Ltd ABN 70 004 999 400

Check all dimensions and site conditions prior to commencement of any work, the purchase or ordering of any materials, fittings, plant, services or equipment and the preparation of shop drawings and or the fabrication of any components.

Do not scale drawings - refer to figured dimensions only. Any discrepancies shall immediately be referred to the architect for clarification.

All drawings may not be reproduced or distributed without prior permission from the architect.

L12 Apartment Count

1B_1BA	6
2B_1BA	2
2B_2BA	8
3B_2BA	5
TOTAL APARTMENTS:	21



Rev	Date	Description	Initial	Checked
B	07.03.23	VCAT Submission Issue	CL	DR
5	03.03.23	Draft - issued for coordination	CL	DR
4	24.02.23	Draft - issued for coordination	CL	DR
3	02.02.23	Draft - issued for coordination	CL	DR
A	01.06.22	Planning Permit Issue		
2	18.05.22	Draft - issued for coordination	ZJ	RB
1	03.05.22	Draft - issued for coordination		

50 QUEENS RD

General Arrangement
Level 12 - 13



Status	FOR COORDINATION		
Scale	1 : 200	@	A1
Drawn	CL	Checked	DR
Project No.	M12568		
Plot Date	6/03/2023 5:47:52 PM		

Drawing no.	Revision
TP03.12	B

Melbourne 1 Nicholson Street
Melbourne VIC 3000 Australia
T 03 8664 6200 F 03 8664 6300
email mel@batesmart.com.au
http://www.batesmart.com.au

Sydney 43 Brisbane Street
Surry Hills NSW 2010 Australia
T 02 8354 5100 F 02 8354 5199
email syd@batesmart.com.au
http://www.batesmart.com.au

Bates Smart Pty Ltd ABN 70 004 999 400



Check all dimensions and site conditions prior to commencement of any work, the purchase or ordering of any materials, fittings, plant, services or equipment and the preparation of shop drawings and or the fabrication of any components.

Do not scale drawings - refer to figured dimensions only. Any discrepancies shall immediately be referred to the architect for clarification.

All drawings may not be reproduced or distributed without prior permission from the architect.

L14 Apartment Count

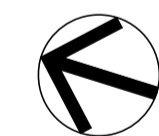
1B_1BA	2
2B_1BA	2
2B_2BA	5
3B_2BA	6
TOTAL APARTMENTS:	15



Rev	Date	Description	Initial	Checked
C	07.03.23	VCAT Submission Issue	CL	DR
B	07.03.23	VCAT Submission Issue	CL	DR
5	03.03.23	Draft - issued for coordination	CL	DR
4	24.02.23	Draft - issued for coordination	CL	DR
3	02.02.23	Draft - issued for coordination	CL	DR
A	01.06.22	Planning Permit Issue		
2	18.05.22	Draft - issued for coordination	ZJ	RB
1	03.05.22	Draft - issued for coordination		

50 QUEENS RD

**General Arrangement
Level 14**



Status	FOR COORDINATION		
Scale	1 : 200	@	A1
Drawn	CL	Checked	DR
Project No.	M12568		
Plot Date	7/03/2023 10:17:57 AM		
BIM			
Drawing no.	TP03.14	Revision	C

Melbourne 1 Nicholson Street
Melbourne VIC 3000 Australia
T 03 8664 6200 F 03 8664 6300
email mel@batesmart.com.au
http://www.batesmart.com.au

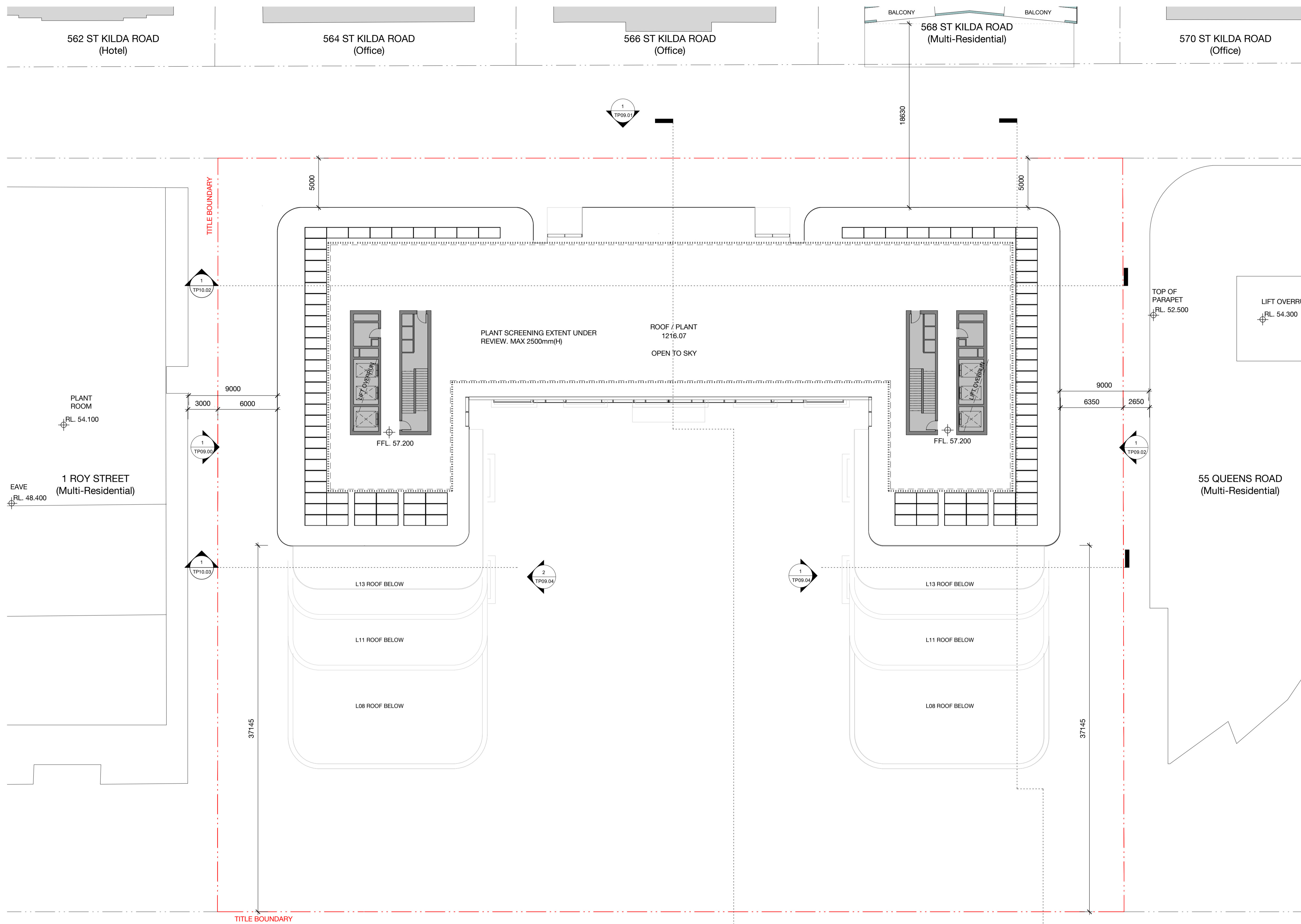
Sydney 43 Brisbane Street
Surry Hills NSW 2010 Australia
T 02 8354 5100 F 02 8354 5199
email syd@batesmart.com.au
http://www.batesmart.com.au

Bates Smart Pty Ltd ABN 70 004 999 400

Check all dimensions and site conditions prior to commencement of any work, the purchase or ordering of any materials, fittings, plant, services or equipment and the preparation of shop drawings and or the fabrication of any components.

Do not scale drawings - refer to figured dimensions only. Any discrepancies shall immediately be referred to the architect for clarification.

All drawings may not be reproduced or distributed without prior permission from the architect.



Rev	Date	Description	Initial	Checked
B	07.03.23	VCAT Submission Issue	CL	DR
5	03.03.23	Draft - issued for coordination	CL	DR
4	24.02.23	Draft - issued for coordination	CL	DR
3	02.02.23	Draft - issued for coordination	CL	DR
A	01.06.22	Planning Permit Issue		
2	18.05.22	Draft - issued for coordination		
1	03.05.22	Draft - issued for coordination	ZJ	RB

50 QUEENS RD

General Arrangement
Roof Plant



Status	FOR COORDINATION		
Scale	1 : 200	@	A1
Drawn	CL	Checked	DR
Project No.	M12568		
Plot Date	6/03/2023 5:50:28 PM		

Drawing no.	Revision
TP03.15	B

Melbourne 1 Nicholson Street
Melbourne VIC 3000 Australia
T 03 8664 6200 F 03 8664 6300
email mel@batesmart.com.au
http://www.batesmart.com.au

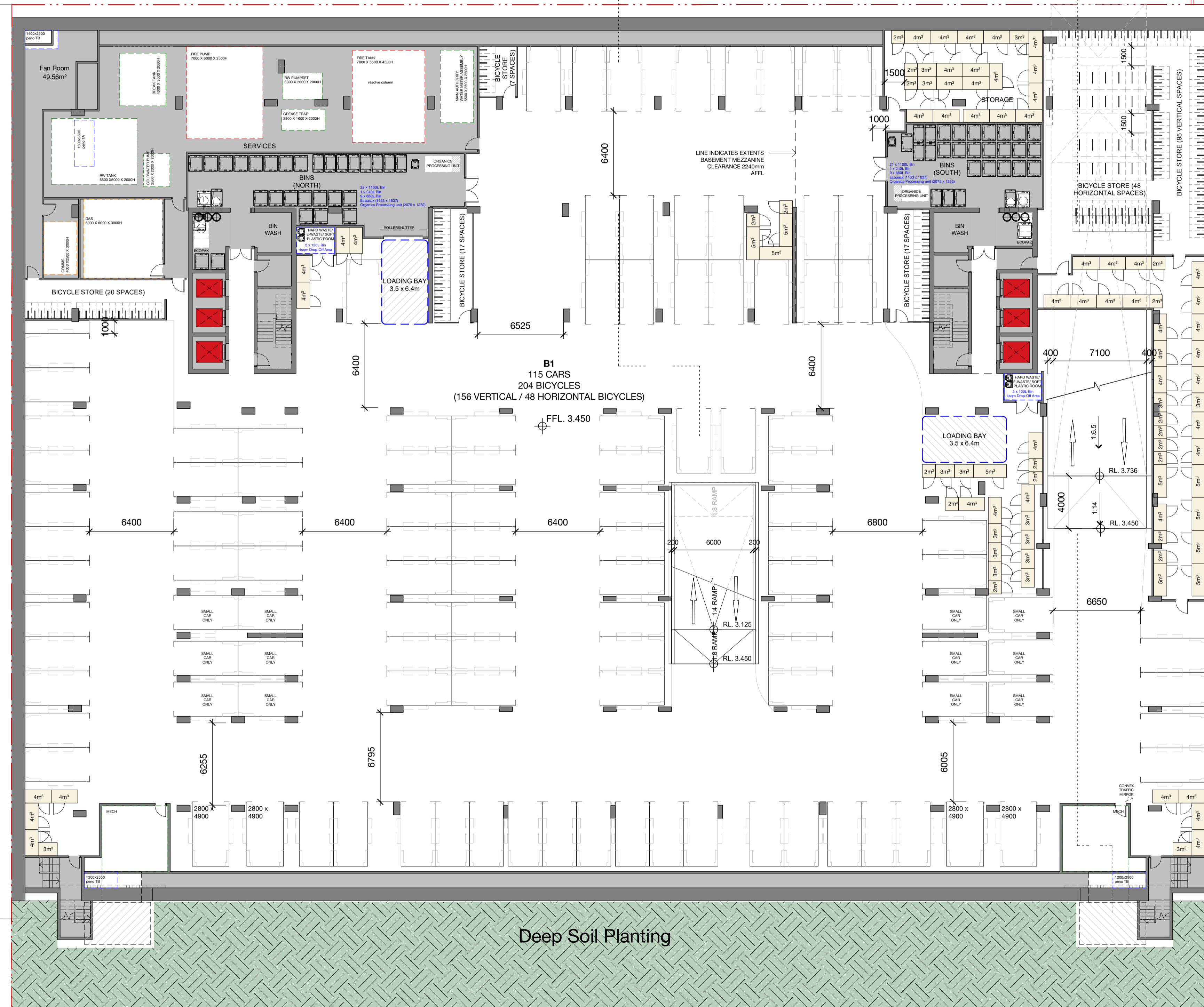
Sydney 43 Brisbane Street
Surry Hills NSW 2010 Australia
T 02 8354 5100 F 02 8354 5199
email syd@batesmart.com.au
http://www.batesmart.com.au

Bates Smart Pty Ltd ABN 70 004 999 400

Check all dimensions and site conditions prior to commencement of any work, the purchase or ordering of any materials, fittings, plant, services or equipment and the preparation of shop drawings and or the fabrication of any components.

Do not scale drawings - refer to figured dimensions only. Any discrepancies shall immediately be referred to the architect for clarification.

All drawings may not be reproduced or distributed without prior permission from the architect.



Car space provision:
 B1: 115
 B2: 154
 B3: 156
 Total: 425

All car spaces are 2600x4900 unless noted otherwise.

Rev	Date	Description	Initial	Checked
B	07.03.23	VCAT Submission Issue	CL	DR
5	03.03.23	Draft - issued for coordination	CL	DR
4	24.02.23	Draft - issued for coordination	CL	DR
3	02.02.23	Draft - issued for coordination	CL	DR
A	01.06.22	Planning Permit Issue		
2	20.05.22	Bins room updated	ZJ	RB
1	03.05.22	Draft - issued for coordination		

50 QUEENS RD

General Arrangement
Basement Level 01



Status	FOR COORDINATION		
Scale	1 : 200	@	A1
Drawn	ZJ	Checked	RB
Project No.	M12568		
Plot Date	6/03/2023 5:54:31 PM		
BIM			
Drawing no.	Revision		

TP03.B01 B

Melbourne 1 Nicholson Street
Melbourne VIC 3000 Australia
T 03 8664 6200 F 03 8664 6300
email mel@batesmart.com.au
http://www.batesmart.com.au

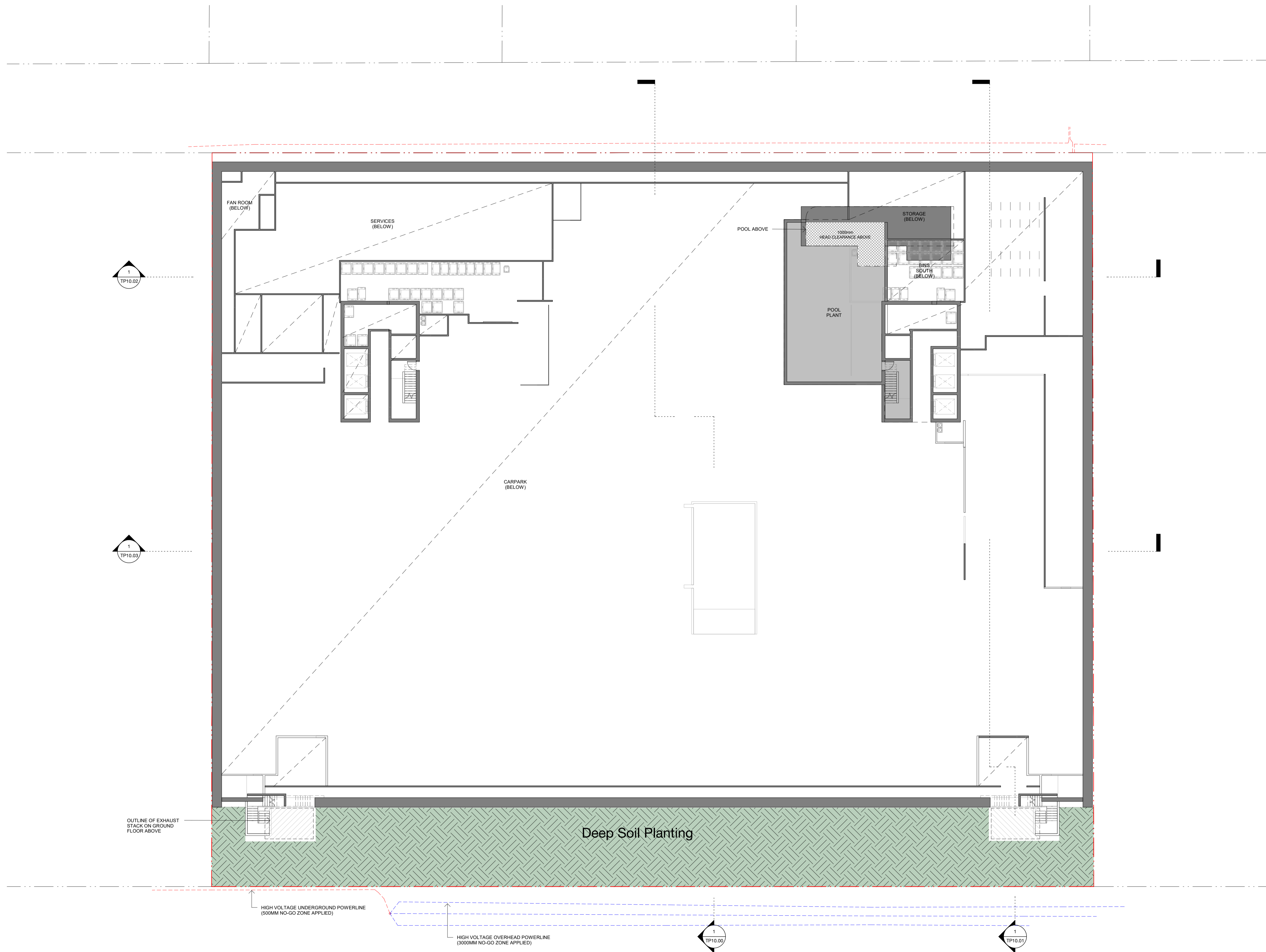
Sydney 43 Brisbane Street
Surry Hills NSW 2010 Australia
T 02 8354 5100 F 02 8354 5199
email syd@batesmart.com.au
http://www.batesmart.com.au

Bates Smart Pty Ltd ABN 70 004 999 400

Check all dimensions and site conditions prior to commencement of any work, the purchase or ordering of any materials, fittings, plant, services or equipment and the preparation of shop drawings and or the fabrication of any components.

Do not scale drawings - refer to figured dimensions only. Any discrepancies shall immediately be referred to the architect for clarification.

All drawings may not be reproduced or distributed without prior permission from the architect.



Rev	Date	Description	Initial	Checked
A	07.03.23	VCAT Submission Issue	CL	DR
2	03.03.23	Draft - issued for coordination	CL	DR
1	24.02.23	Draft - issued for coordination	CL	DR

50 QUEENS RD

General Arrangement
Basement Level 01 Mezzanine



Status	FOR COORDINATION	
Scale	1 : 200	@ A1
Drawn	ZJ	Checked RB
Project No.	M12568	
Plot Date	6/03/2023 5:44:19 PM	
BIM		

Drawing no. TP03.B01M
Revision A

Melbourne 1 Nicholson Street
Melbourne VIC 3000 Australia
T 03 8664 6200 F 03 8664 6300
email mel@batesmart.com.au
http://www.batesmart.com.au

Sydney 43 Brisbane Street
Surry Hills NSW 2010 Australia
T 02 8354 5100 F 02 8354 5199
email syd@batesmart.com.au
http://www.batesmart.com.au

Bates Smart Pty Ltd ABN 70 004 999 400

BATESSMART

Check all dimensions and site conditions prior to commencement of any work, the purchase or ordering of any materials, fittings, plant, services or equipment and the preparation of shop drawings and or the fabrication of any components.

Do not scale drawings - refer to figured dimensions only. Any discrepancies shall immediately be referred to the architect for clarification.

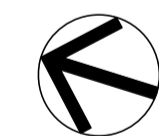
All drawings may not be reproduced or distributed without prior permission from the architect.



Rev	Date	Description	Initial	Checked
B	07.03.23	VCAT Submission Issue	CL	DR
5	03.03.23	Draft - issued for coordination	CL	DR
4	24.02.23	Draft - issued for coordination	CL	DR
3	02.02.23	Draft - issued for coordination	CL	DR
A	01.06.22	Planning Permit Issue		
2	20.05.22	Draft - issued for coordination	ZJ	RB
1	03.05.22	Draft - issued for coordination		

50 QUEENS RD

General Arrangement
Basement Level 02



Status	FOR COORDINATION		
Scale	1 : 200	@ A1	
Drawn	ZJ	Checked	RB
Project No.	M12568		
Plot Date	6/03/2023 5:54:22 PM		

Drawing no.	Revision
TP03.B02	B

Melbourne 1 Nicholson Street
Melbourne VIC 3000 Australia
T 03 8664 6200 F 03 8664 6300
email mel@batesmart.com.au
http://www.batesmart.com.au

Sydney 43 Brisbane Street
Surry Hills NSW 2010 Australia
T 02 8354 5100 F 02 8354 5199
email syd@batesmart.com.au
http://www.batesmart.com.au

Bates Smart Pty Ltd ABN 70 004 999 400

Check all dimensions and site conditions prior to commencement of any work, the purchase or ordering of any materials, fittings, plant, services or equipment and the preparation of shop drawings and or the fabrication of any components.

Do not scale drawings - refer to figured dimensions only. Any discrepancies shall immediately be referred to the architect for clarification.

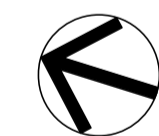
All drawings may not be reproduced or distributed without prior permission from the architect.



Rev	Date	Description	Initial	Checked
B	07.03.23	VCAT Submission Issue	CL	DR
5	03.03.23	Draft - issued for coordination	CL	DR
4	24.02.23	Draft - issued for coordination	CL	DR
3	02.02.23	Draft - issued for coordination	CL	DR
A	01.06.22	Planning Permit Issue		
2	20.05.22	Draft - issued for coordination	ZJ	RB
1	03.05.22	Draft - issued for coordination		

50 QUEENS RD

General Arrangement
Basement Level 03



Status	FOR COORDINATION	
Scale	1 : 200	@ A1
Drawn	ZJ	Checked RB
Project No.	M12568	
Plot Date	6/03/2023 5:54:37 PM	

Drawing no.	Revision
TP03.B03	B

Melbourne 1 Nicholson Street
Melbourne VIC 3000 Australia
T 03 8664 6200 F 03 8664 6300
email mel@batesmart.com.au
http://www.batesmart.com.au

Sydney 43 Brisbane Street
Surry Hills NSW 2010 Australia
T 02 8354 5100 F 02 8354 5199
email syd@batesmart.com.au
http://www.batesmart.com.au

Bates Smart Pty Ltd ABN 70 004 999 400

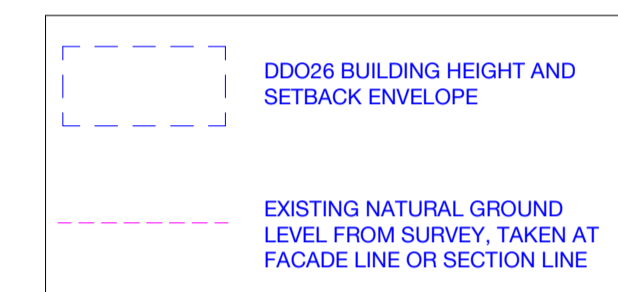
Check all dimensions and site conditions prior to commencement of any work, the purchase or ordering of any materials, fittings, plant, services or equipment and the preparation of shop drawings and or the fabrication of any components.

Do not scale drawings - refer to figured dimensions only. Any discrepancies shall immediately be referred to the architect for clarification.

All drawings may not be reproduced or distributed without prior permission from the architect.

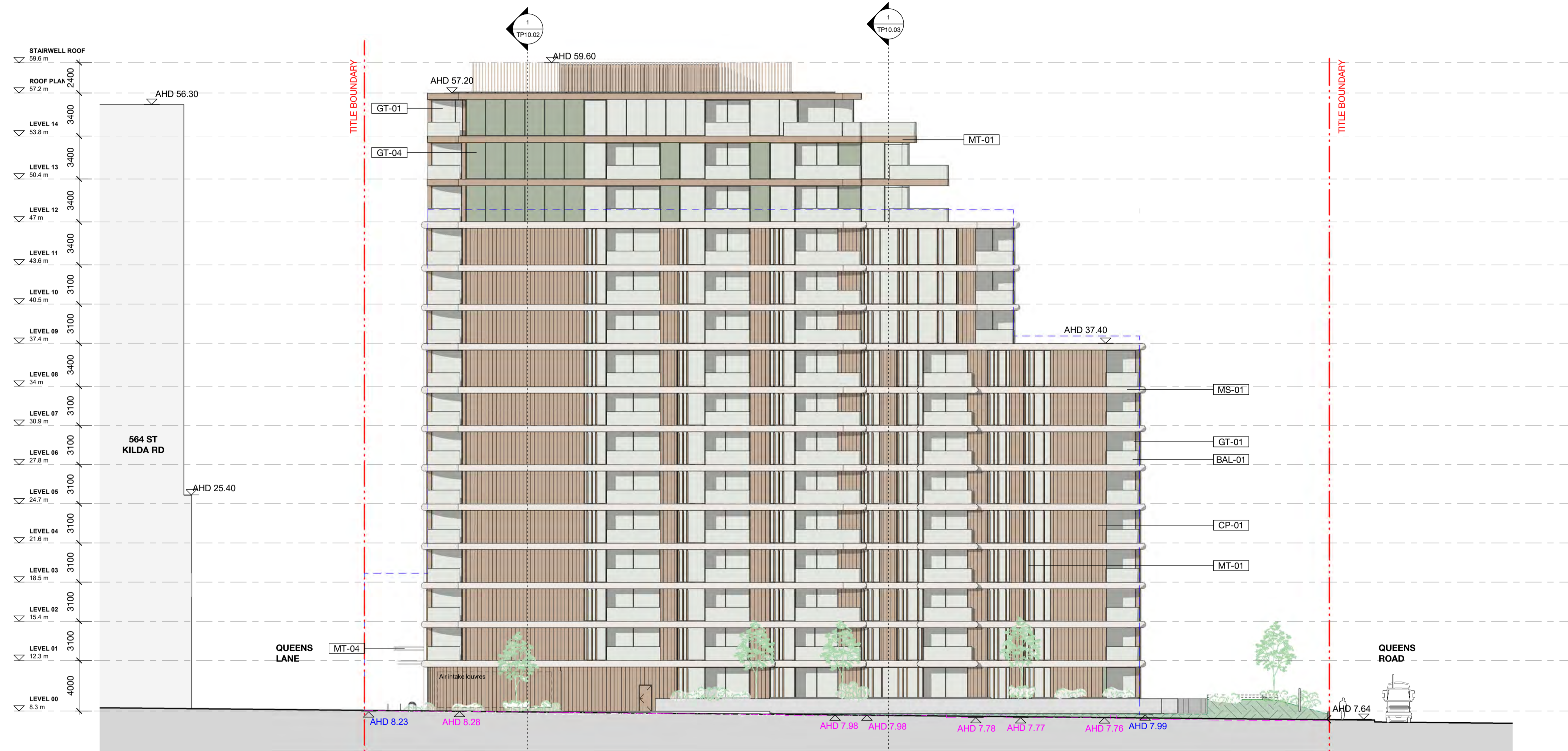
MATERIAL LEGEND

- MS-01 MASONRY / MASONRY-LIKE FINISH
- MT-01 BRONZE ALUMINIUM
- MT-02 WHITE ALUMINIUM
- MT-03 WHITE ALUMINIUM
- MT-04 WHITE ALUMINIUM FEATURE CEILING
- GT-01 WARM COLOUR GLAZING WITH BRONZE FRAMING
- GT-02 CLEAR COLOUR GLAZING WITH WHITE FRAMING
- GT-03 SPANDREL GLASS
- GT-04 SPANDREL GLASS BRONZE
- GT-05 DARK COLOUR GLAZING WITH DARK BRONZE FRAMING
- GT-06 SPANDREL
- GT-07 SPANDREL GLASS DARK BRONZE
- BAL-01 BALUSTRADE WITH BRONZE FRAMING AND WARM COLOUR GLAZING
- BAL-02 BALUSTRADE WITH WHITE FRAMING AND CLEAR COLOUR GLAZING
- BAL-03 DARK BRONZE POWDERCOAT ALUMINIUM PALISADE BALUSTRADE (NO GLAZING)
- CP-01 PROFILED CLADDING PANEL IN BRONZE COLOUR



Note: The ground level for the purposes of approximating the DDO26 envelope for the St Kilda Road properties has been taken from the existing natural ground level at Queens Lane. This can be considered to represent a conservative height envelope, noting the natural ground level actually elevates towards St Kilda Road which permits building height to increase correspondingly

B	07.03.23	VCAT Submission Issue	CL	DR
7	03.03.23	Draft - issued for coordination	CL	DR
6	24.02.23	Draft - issued for coordination	CL	DR
5	02.02.23	Draft - issued for coordination	CL	DR
4	16.08.22	Draft - issued for coordination		
3	10.08.22	Draft - issued for coordination		
A	01.06.22	Planning Permit Issue		
2	20.05.22	Draft - issued for coordination		
1	03.05.22	Draft - issued for coordination	ZJ	RB
Rev	Date	Description	Initial	Checked



50 QUEENS RD

External Elevations North Elevation

Status	FOR COORDINATION		
Scale	1 : 200	@	A1
Drawn	CL	Checked	DR
Project No.	M12568		
Plot Date	6/03/2023 5:45:20 PM		

BIM	
Drawing no.	Revision
TP09.00	B

Melbourne 1 Nicholson Street
Melbourne VIC 3000 Australia
T 03 8664 6200 F 03 8664 6300
email mel@batesmart.com.au
http://www.batesmart.com.au

Sydney 43 Brisbane Street
Surry Hills NSW 2010 Australia
T 02 8354 5100 F 02 8354 5199
email syd@batesmart.com.au
http://www.batesmart.com.au

Bates Smart Pty Ltd ABN 70 004 999 400



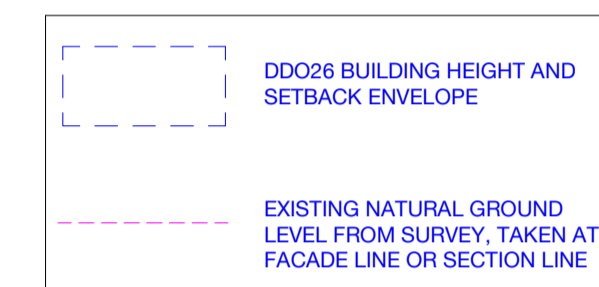
Check all dimensions and site conditions prior to commencement of any work, the purchase or ordering of any materials, fittings, plant, services or equipment and the preparation of shop drawings and or the fabrication of any components.

Do not scale drawings - refer to figured dimensions only. Any discrepancies shall immediately be referred to the architect for clarification.

All drawings may not be reproduced or distributed without prior permission from the architect.

MATERIAL LEGEND

- MS-01 MASONRY / MASONRY-LIKE FINISH
- MT-01 BRONZE ALUMINIUM
- MT-02 WHITE ALUMINIUM
- MT-03 WHITE ALUMINIUM
- MT-04 WHITE ALUMINIUM FEATURE CEILING
- GT-01 WARM COLOUR GLAZING WITH BRONZE FRAMING
- GT-02 CLEAR COLOUR GLAZING WITH WHITE FRAMING
- GT-03 SPANDREL GLASS
- GT-04 SPANDREL GLASS BRONZE
- GT-05 DARK COLOUR GLAZING WITH DARK BRONZE FRAMING
- GT-06 SPANDREL
- GT-07 SPANDREL GLASS DARK BRONZE
- BAL-01 BALUSTRADE WITH BRONZE FRAMING AND WARM COLOUR GLAZING
- BAL-02 BALUSTRADE WITH WHITE FRAMING AND CLEAR COLOUR GLAZING
- BAL-03 DARK BRONZE POWDERCOAT ALUMINIUM PALISADE BALUSTRADE (NO GLAZING)
- CP-01 PROFILED CLADDING PANEL IN BRONZE COLOUR



Note: The ground level for the purposes of approximating the DDO26 envelope for the St Kilda Road properties has been taken from the existing natural ground level at Queens Lane. This can be considered to represent a conservative height envelope, noting the natural ground level actually elevates towards St Kilda Road which permits building height to increase correspondingly

Rev	Date	Description	Initial	Checked
B	07.03.23	VCAT Submission Issue	CL	DR
7	03.03.23	Draft - issued for coordination	CL	DR
6	24.02.23	Draft - issued for coordination	CL	DR
5	02.02.23	Draft - issued for coordination	CL	DR
4	16.08.22	Draft - issued for coordination		
3	10.08.22	Draft - issued for coordination		
A	01.06.22	Planning Permit Issue		
2	20.05.22	Draft - issued for coordination		
1	03.05.22	Draft - issued for coordination	ZJ	RB

50 QUEENS RD

**External Elevations
East Elevation**

Status	FOR COORDINATION		
Scale	1 : 200	@	A1
Drawn	CL	Checked	DR
Project No.	M12568		
Plot Date	6/03/2023 5:55:50 PM		

Drawing no.	Revision
TP09.01	B

Melbourne 1 Nicholson Street
Melbourne VIC 3000 Australia
T 03 8664 6200 F 03 8664 6300
email mel@batesmart.com.au
http://www.batesmart.com.au

Sydney 43 Brisbane Street
Surry Hills NSW 2010 Australia
T 02 8354 5100 F 02 8354 5199
email syd@batesmart.com.au
http://www.batesmart.com.au

Bates Smart Pty Ltd ABN 70 004 999 400



Autodesk Docs://50 Queens Rd/50 QUEENS RD_BIS_ARCH_P02022.rvt

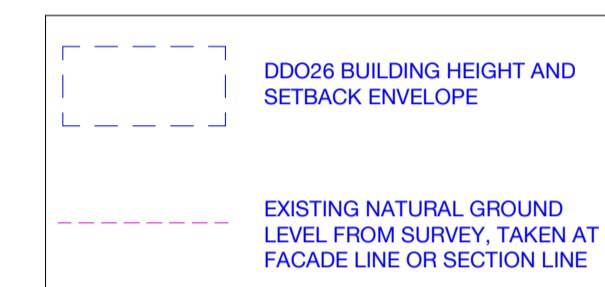
Check all dimensions and site conditions prior to commencement of any work, the purchase or ordering of any materials, fittings, plant, services or equipment and the preparation of shop drawings and or the fabrication of any components.

Do not scale drawings - refer to figured dimensions only. Any discrepancies shall immediately be referred to the architect for clarification.

All drawings may not be reproduced or distributed without prior permission from the architect.

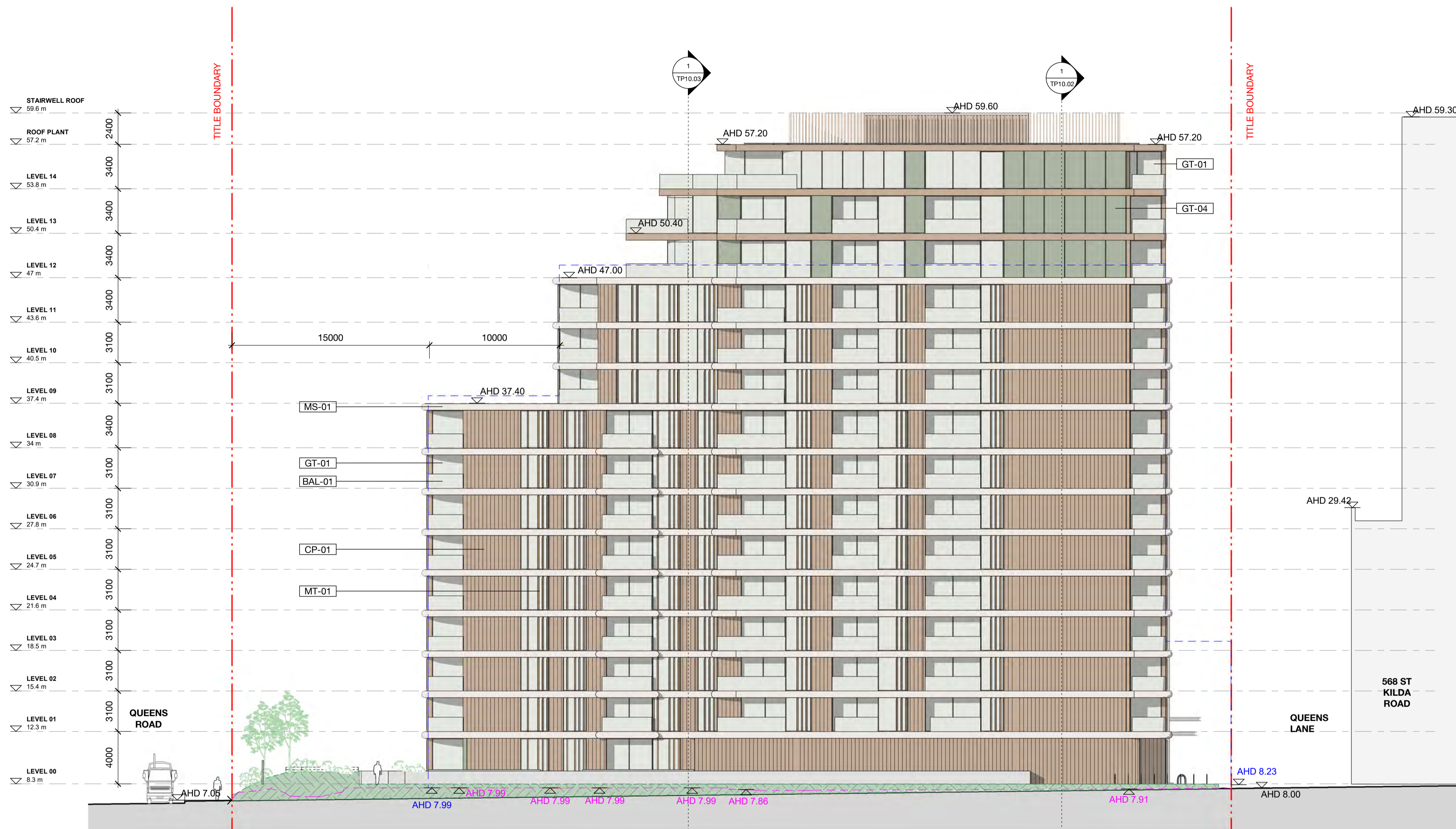
MATERIAL LEGEND

- MS-01 MASONRY / MASONRY-LIKE FINISH
- MT-01 BRONZE ALUMINIUM
- MT-02 WHITE ALUMINIUM
- MT-03 WHITE ALUMINIUM
- MT-04 WHITE ALUMINIUM FEATURE CEILING
- GT-01 WARM COLOUR GLAZING WITH BRONZE FRAMING
- GT-02 CLEAR COLOUR GLAZING WITH WHITE FRAMING
- GT-03 SPANDREL GLASS
- GT-04 SPANDREL GLASS BRONZE
- GT-05 DARK COLOUR GLAZING WITH DARK BRONZE FRAMING
- GT-06 SPANDREL
- GT-07 SPANDREL GLASS DARK BRONZE
- BAL-01 BALUSTRADE WITH BRONZE FRAMING AND WARM COLOUR GLAZING
- BAL-02 BALUSTRADE WITH WHITE FRAMING AND CLEAR COLOUR GLAZING
- BAL-03 DARK BRONZE POWDERCOAT ALUMINIUM PALISADE BALUSTRADE (NO GLAZING)
- CP-01 PROFILED CLADDING PANEL IN BRONZE COLOUR



Note: The ground level for the purposes of approximating the DDO26 envelope for the St Kilda Road properties has been taken from the existing natural ground level at Queens Lane. This can be considered to represent a conservative height envelope, noting the natural ground level actually elevates towards St Kilda Road which permits building height to increase correspondingly

B	07.03.23	VCAT Submission Issue	CL	DR
7	03.03.23	Draft - issued for coordination	CL	DR
6	24.02.23	Draft - issued for coordination	CL	DR
5	02.02.23	Draft - issued for coordination	CL	DR
4	16.08.22	Draft - issued for coordination		
3	10.08.22	Draft - issued for coordination		
A	01.06.22	Planning Permit Issue		
2	20.05.22	Draft - issued for coordination	ZJ	RB
1	03.05.22	Draft - issued for coordination		



2 Natural Ground South Facade
1 : 200

50 QUEENS RD

External Elevations
South Elevation

Status	FOR COORDINATION		
Scale	1 : 200	@	A1
Drawn	CL	Checked	DR
Project No.	M12568		
Plot Date	6/03/2023 5:52:49 PM		

BIM	
Drawing no.	Revision
TP09.02	B

Melbourne 1 Nicholson Street
Melbourne VIC 3000 Australia
T 03 8664 6200 F 03 8664 6300
email mel@batesmart.com.au
http://www.batesmart.com.au

Sydney 43 Brisbane Street
Surry Hills NSW 2010 Australia
T 02 8354 5100 F 02 8354 5199
email syd@batesmart.com.au
http://www.batesmart.com.au

Bates Smart Pty Ltd ABN 70 004 999 400



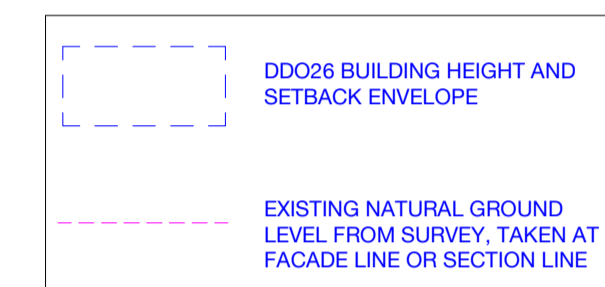
Check all dimensions and site conditions prior to commencement of any work, the purchase or ordering of any materials, fittings, plant, services or equipment and the preparation of shop drawings and or the fabrication of any components.

Do not scale drawings - refer to figured dimensions only. Any discrepancies shall immediately be referred to the architect for clarification.

All drawings may not be reproduced or distributed without prior permission from the architect.

MATERIAL LEGEND

MS-01	MASONRY / MASONRY-LIKE FINISH
MT-01	BRONZE ALUMINIUM
MT-02	WHITE ALUMINIUM
MT-03	WHITE ALUMINIUM
MT-04	WHITE ALUMINIUM FEATURE CEILING
GT-01	WARM COLOUR GLAZING WITH BRONZE FRAMING
GT-02	CLEAR COLOUR GLAZING WITH WHITE FRAMING
GT-03	SPANDREL GLASS
GT-04	SPANDREL GLASS BRONZE
GT-05	DARK COLOUR GLAZING WITH DARK BRONZE FRAMING
GT-06	SPANDREL
GT-07	SPANDREL GLASS DARK BRONZE
BAL-01	BALUSTRADE WITH BRONZE FRAMING AND WARM COLOUR GLAZING
BAL-02	BALUSTRADE WITH WHITE FRAMING AND CLEAR COLOUR GLAZING
BAL-03	DARK BRONZE POWDERCOAT ALUMINIUM PALISADE BALUSTRADE (NO GLAZING)
CP-01	PROFILED CLADDING PANEL IN BRONZE COLOUR



Note: The ground level for the purposes of approximating the DDO26 envelope for the St Kilda Road properties has been taken from the existing natural ground level at Queens Lane. This can be considered to represent a conservative height envelope, noting the natural ground level actually elevates towards St Kilda Road which permits building height to increase correspondingly

B	07.03.23	VCAT Submission Issue	CL	DR
7	03.03.23	Draft - issued for coordination	CL	DR
6	24.02.23	Draft - issued for coordination	CL	DR
5	02.02.23	Draft - issued for coordination	CL	DR
4	16.08.22	Draft - issued for coordination		
3	10.08.22	Draft - issued for coordination		
A	01.06.22	Planning Permit Issue		
2	20.05.22	Draft - issued for coordination		
1	03.05.22	Draft - issued for coordination	ZJ	RB



50 QUEENS RD

External Elevations West Elevation

Status	FOR COORDINATION		
Scale	1 : 200	@	A1
Drawn	CL	Checked	DR
Project No.	M12568		
Plot Date	6/03/2023 5:51:36 PM		

BIM	
Drawing no.	Revision
TP09.03	B

Melbourne 1 Nicholson Street
Melbourne VIC 3000 Australia
T 03 8664 6200 F 03 8664 6300
email mel@batesmart.com.au
http://www.batesmart.com.au

Sydney 43 Brisbane Street
Surry Hills NSW 2010 Australia
T 02 8354 5100 F 02 8354 5199
email syd@batesmart.com.au
http://www.batesmart.com.au

Bates Smart Pty Ltd ABN 70 004 999 400



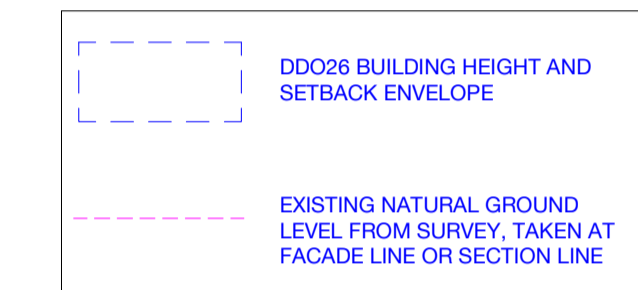
Check all dimensions and site conditions prior to commencement of any work, the purchase or ordering of any materials, fittings, plant, services or equipment and the preparation of shop drawings and or the fabrication of any components.

Do not scale drawings - refer to figured dimensions only. Any discrepancies shall immediately be referred to the architect for clarification.

All drawings may not be reproduced or distributed without prior permission from the architect.

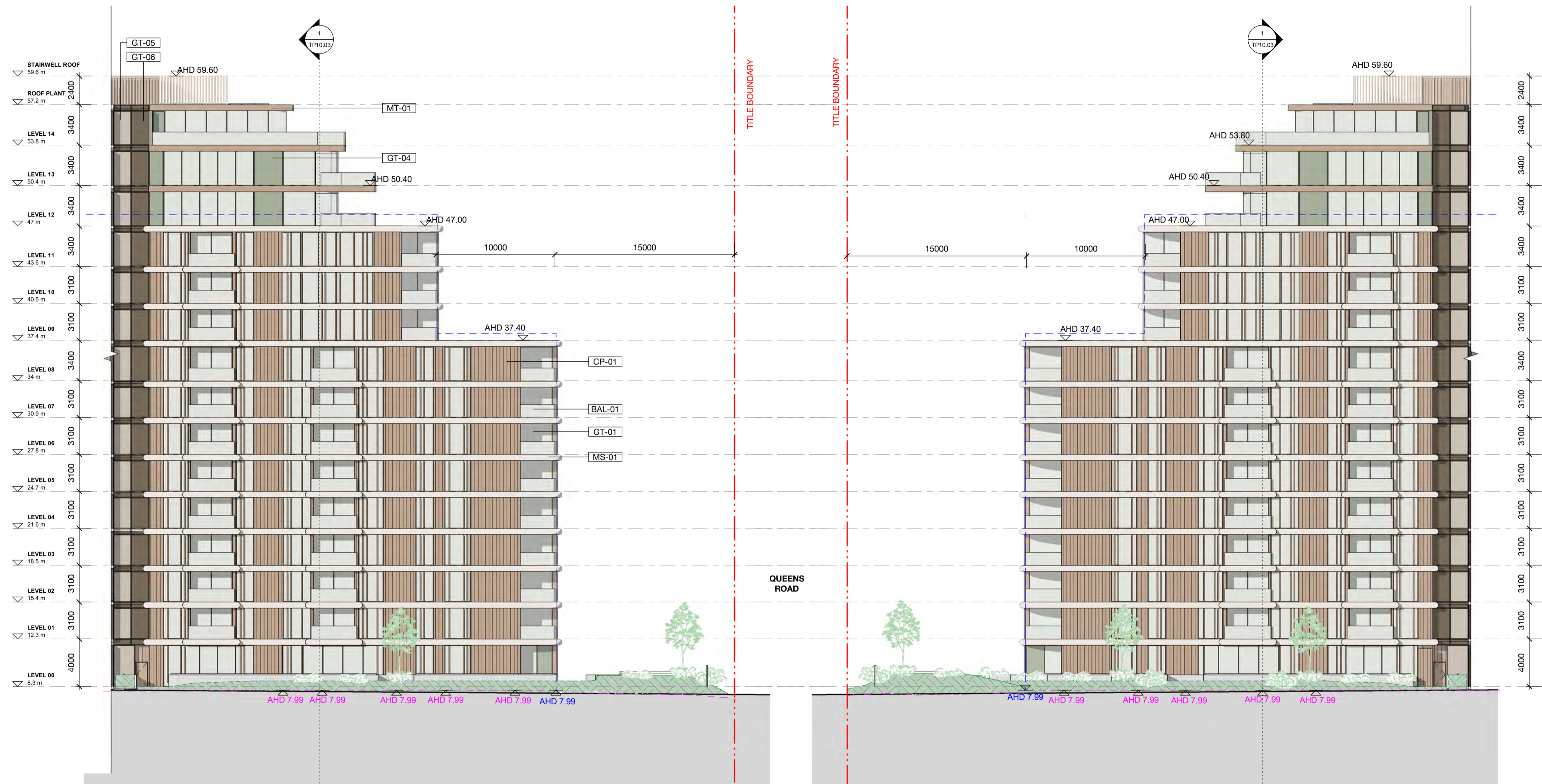
MATERIAL LEGEND

- CP-01 PROFILED CLADDING PANEL IN BRONZE COLOUR
- BAL-01 BALUSTRADE WITH BRONZE FRAMING AND WARM COLOUR GLAZING
- BAL-02 BALUSTRADE WITH WHITE FRAMING AND CLEAR COLOUR GLAZING
- BAL-03 DARK BRONZE ALUMINIUM PALISADE BALUSTRADE (NO GLAZING)
- GT-01 WARM COLOUR GLAZING WITH BRONZE FRAMING
- GT-02 CLEAR COLOUR GLAZING WITH WHITE FRAMING
- GT-03 SPANDREL GLASS
- GT-04 SPANDREL GLASS BRONZE
- GT-05 DARK COLOUR GLAZING WITH DARK BRONZE FRAME
- GT-06 SPANDREL GLASS DARK BRONZE
- MS-01 BEIGE MASONRY-LIKE FINISH
- MT-01 BRONZE ALUMINIUM
- MT-02 WHITE ALUMINIUM
- MT-03 WHITE ALUMINIUM
- MT-04 WHITE ALUMINIUM FEATURE CEILING



Note: The ground level for the purposes of approximating the DDO26 envelope for the St Kilda Road properties has been taken from the existing natural ground level at Queens Lane. This can be considered to represent a conservative height envelope, noting the natural ground level actually elevates towards St Kilda Road which permits building height to increase correspondingly

Rev	Date	Description	Initial	Checked
B	07.03.23	VCAT Submission Issue	CL	DR
6	03.03.23	Draft - issued for coordination	CL	DR
5	24.02.23	Draft - issued for coordination	CL	DR
4	02.02.23	Draft - issued for coordination	CL	DR
3	16.08.22	Draft - issued for coordination		
A	01.06.22	Planning Permit Issue		
2	20.05.22	Draft - issued for coordination	ZJ	RB
1	03.05.22	Draft - issued for coordination		



1 North Elevation - Courtyard
1 : 200

2 South Elevation - Courtyard
1 : 200

50 QUEENS RD

**External Elevations
Courtyard Elevations**

Status	FOR COORDINATION
Scale	As indicated @ A1
Drawn	CL Checked DR
Project No.	M12568
Plot Date	6/03/2023 5:53:34 PM
BIM	

Drawing no.	Revision
TP09.04	B

Melbourne 1 Nicholson Street
Melbourne VIC 3000 Australia
T 03 8664 6200 F 03 8664 6300
email mel@batesmart.com.au
http://www.batesmart.com.au

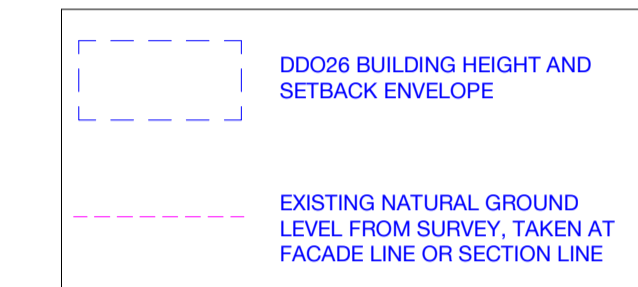
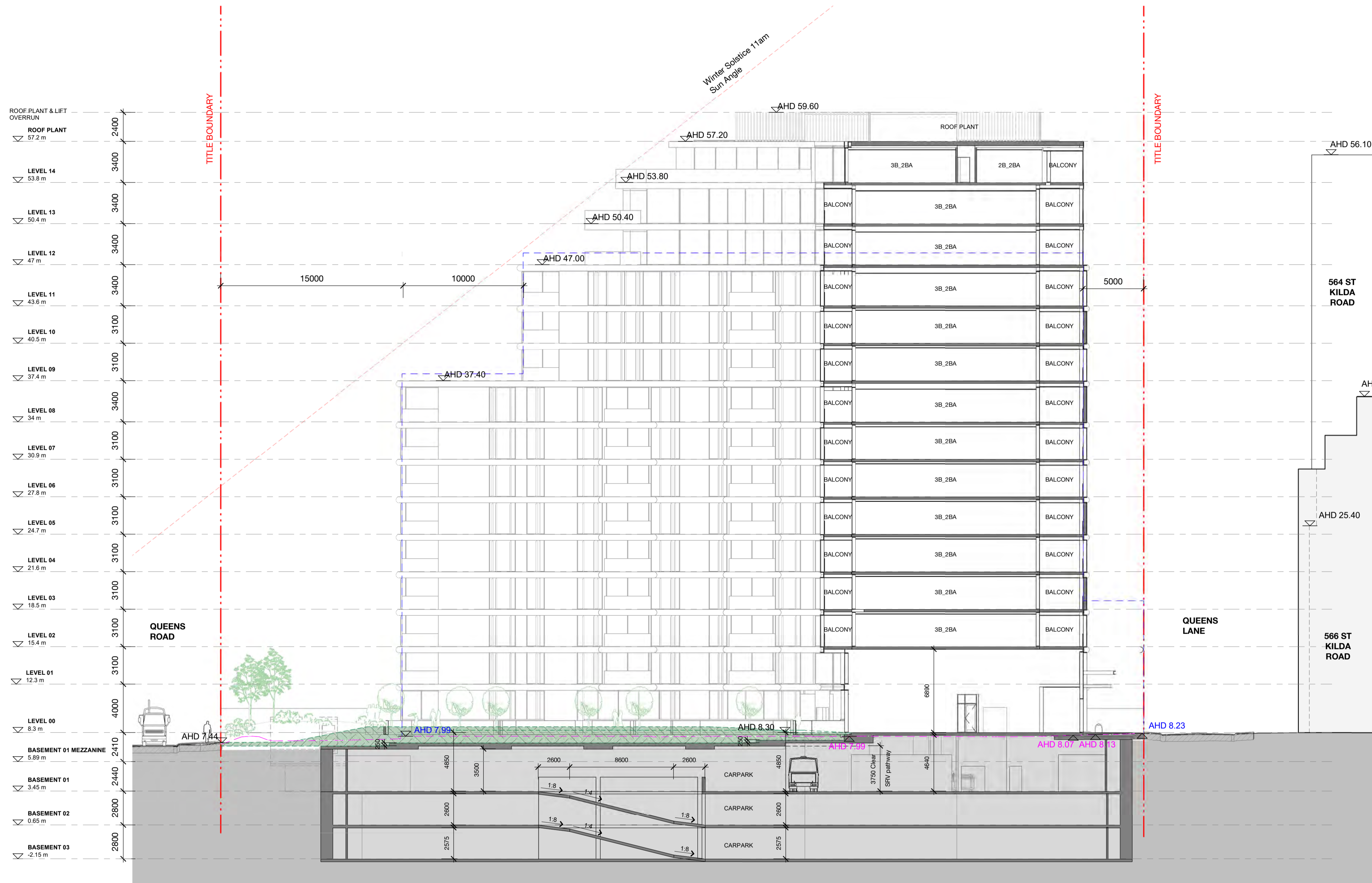
Sydney 43 Brisbane Street
Surry Hills NSW 2010 Australia
T 02 8354 5100 F 02 8354 5199
email syd@batesmart.com.au
http://www.batesmart.com.au

Bates Smart Pty Ltd ABN 70 004 999 400

Check all dimensions and site conditions prior to commencement of any work, the purchase or ordering of any materials, fittings, plant, services or equipment and the preparation of shop drawings and or the fabrication of any components.

Do not scale drawings - refer to figured dimensions only. Any discrepancies shall immediately be referred to the architect for clarification.

All drawings may not be reproduced or distributed without prior permission from the architect.



Note: The ground level for the purposes of approximating the DDO26 envelope for the St Kilda Road properties has been taken from the existing natural ground level at Queens Lane. This can be considered to represent a conservative height envelope, noting the natural ground level actually elevates towards St Kilda Road which permits building height to increase correspondingly

Rev	Date	Description	Initial	Checked
B	07.03.23	VCAT Submission Issue	CL	DR
7	03.03.23	Draft - issued for coordination	CL	DR
6	24.02.23	Draft - issued for coordination	CL	DR
5	02.02.23	Draft - issued for coordination	CL	DR
4	16.08.22	Draft - issued for coordination		
3	10.08.22	Draft - issued for coordination		
A	01.06.22	Planning Permit Issue		
2	20.05.22	Draft - issued for coordination		
1	03.05.22	Draft - issued for coordination	ZJ	RB

50 QUEENS RD

Building Sections
East - West Section 01

Status	FOR COORDINATION		
Scale	1 : 200	@	A1
Drawn	CL	Checked	DR
Project No.	M12568		
Plot Date	6/03/2023 5:54:11 PM		

Drawing no.	Revision
TP10.00	B

Melbourne 1 Nicholson Street
Melbourne VIC 3000 Australia
T 03 8664 6200 F 03 8664 6300
email mel@batesmart.com.au
http://www.batesmart.com.au

Sydney 43 Brisbane Street
Surry Hills NSW 2010 Australia
T 02 8354 5100 F 02 8354 5199
email syd@batesmart.com.au
http://www.batesmart.com.au

Bates Smart Pty Ltd ABN 70 004 999 400

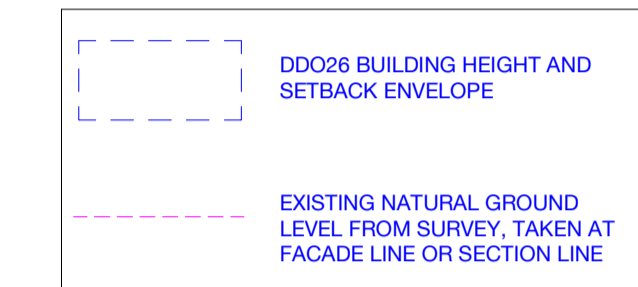
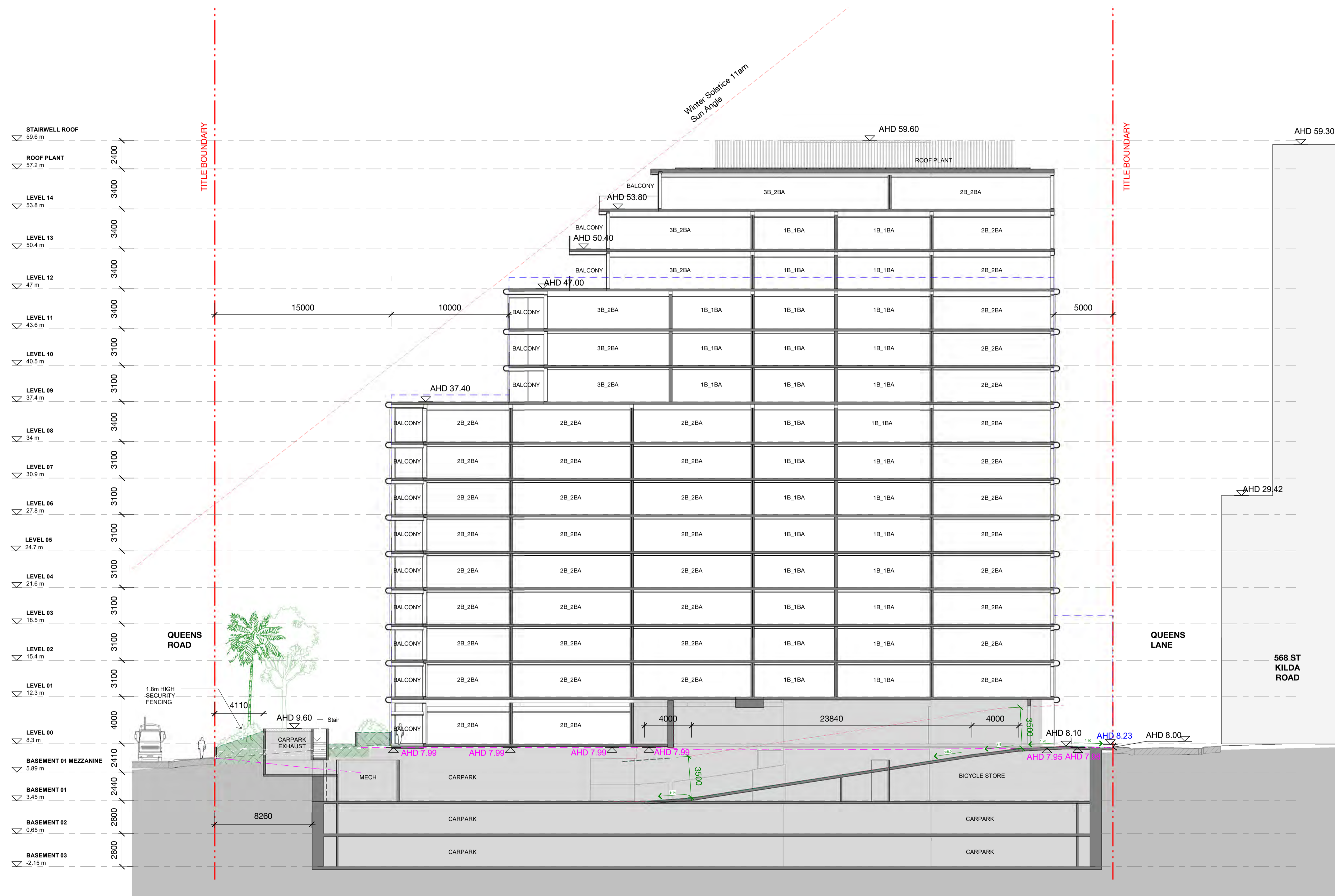


1 East-West Section (Courtyard)
1 : 200

Check all dimensions and site conditions prior to commencement of any work, the purchase or ordering of any materials, fittings, plant, services or equipment and the preparation of shop drawings and or the fabrication of any components.

Do not scale drawings - refer to figured dimensions only. Any discrepancies shall immediately be referred to the architect for clarification.

All drawings may not be reproduced or distributed without prior permission from the architect.



Note: The ground level for the purposes of approximating the DDO26 envelope for the St Kilda Road properties has been taken from the existing natural ground level at Queens Lane. This can be considered to represent a conservative height envelope, noting the natural ground level actually elevates towards St Kilda Road which permits building height to increase correspondingly.

Rev	Date	Description	Initial	Checked
B	07.03.23	VCAT Submission Issue	CL	DR
7	03.03.23	Draft - issued for coordination	CL	DR
6	24.02.23	Draft - issued for coordination	CL	DR
5	02.02.23	Draft - issued for coordination	CL	DR
4	16.08.22	Draft - issued for coordination		
3	10.08.22	Draft - issued for coordination		
A	01.06.22	Planning Permit Issue		
2	20.05.22	Draft - issued for coordination		
1	03.05.22	Draft - issued for coordination	ZJ	RB

50 QUEENS RD

Building Sections East - West Section 02

Status	FOR COORDINATION		
Scale	1 : 200	@	A1
Drawn	CL	Checked	DR
Project No.	M12568		
Plot Date	6/03/2023 5:53:53 PM		

Drawing no.	Revision
TP10.01	B

Melbourne 1 Nicholson Street
Melbourne VIC 3000 Australia
T 03 8664 6200 F 03 8664 6300
email mel@batesmart.com.au
http://www.batesmart.com.au

Sydney 43 Brisbane Street
Surry Hills NSW 2010 Australia
T 02 8354 5100 F 02 8354 5199
email syd@batesmart.com.au
http://www.batesmart.com.au

Bates Smart Pty Ltd ABN 70 004 999 400

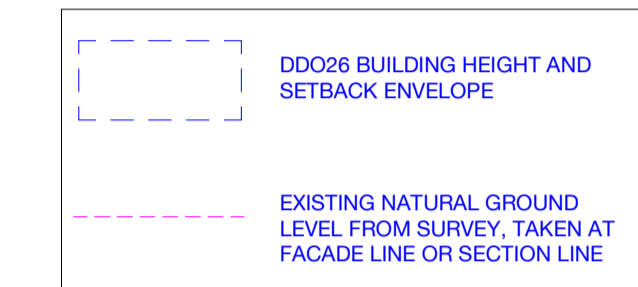


1 East-West Section (South Wing)
1 : 200

Check all dimensions and site conditions prior to commencement of any work, the purchase or ordering of any materials, fittings, plant, services or equipment and the preparation of shop drawings and or the fabrication of any components.

Do not scale drawings - refer to figured dimensions only. Any discrepancies shall immediately be referred to the architect for clarification.

All drawings may not be reproduced or distributed without prior permission from the architect.



Note: The ground level for the purposes of approximating the DDO26 envelope for the St Kilda Road properties has been taken from the existing natural ground level at Queens Lane. This can be considered to represent a conservative height envelope, noting the natural ground level actually elevates towards St Kilda Road which permits building height to increase correspondingly

Rev	Date	Description	Initial	Checked
B	07.03.23	VCAT Submission Issue	CL	DR
7	03.03.23	Draft - issued for coordination	CL	DR
6	24.02.23	Draft - issued for coordination	CL	DR
5	02.02.23	Draft - issued for coordination	CL	DR
4	16.08.22	Draft - issued for coordination		
3	10.08.22	Draft - issued for coordination		
A	01.06.22	Planning Permit Issue		
2	20.05.22	Draft - issued for coordination		
1	03.05.22	Draft - issued for coordination	ZJ	RB

50 QUEENS RD

Building Sections
North - South Section 01

Status	FOR COORDINATION		
Scale	1 : 200	@	A1
Drawn	CL	Checked	DR
Project No.	M12568		
Plot Date	6/03/2023 5:46:16 PM		

Drawing no.	Revision
TP10.02	B

Melbourne 1 Nicholson Street
Melbourne VIC 3000 Australia
T 03 8664 6200 F 03 8664 6300
email mel@batesmart.com.au
http://www.batesmart.com.au

Sydney 43 Brisbane Street
Surry Hills NSW 2010 Australia
T 02 8354 5100 F 02 8354 5199
email syd@batesmart.com.au
http://www.batesmart.com.au

Bates Smart Pty Ltd ABN 70 004 999 400

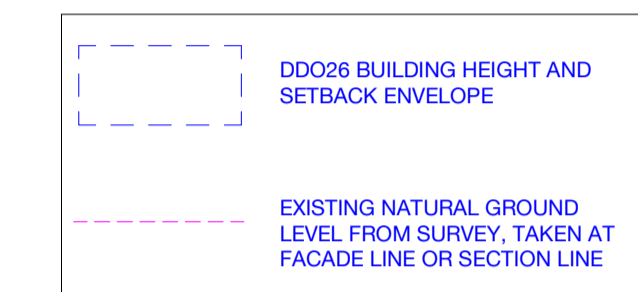
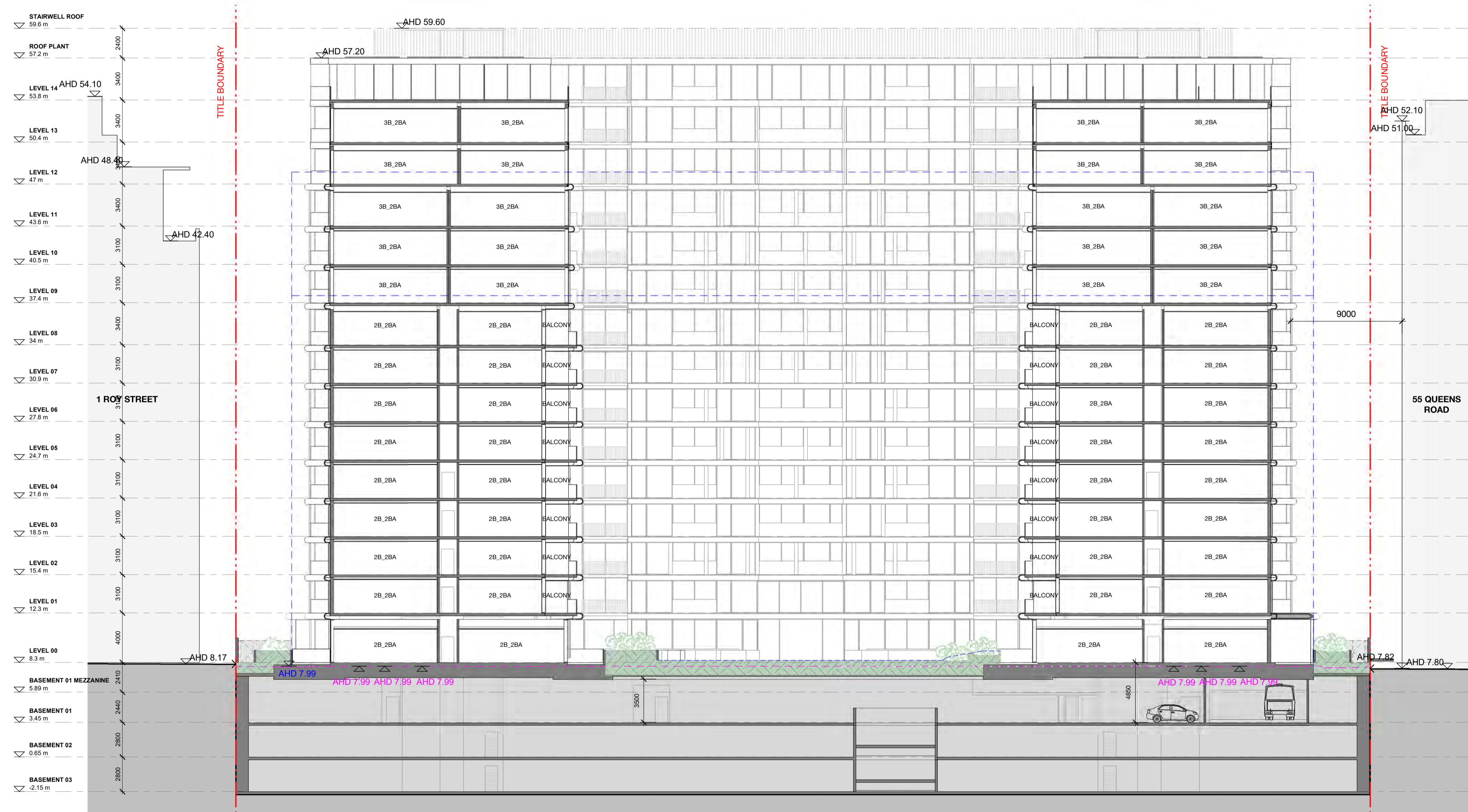


1 North-South Section 1
1 : 200

Check all dimensions and site conditions prior to commencement of any work, the purchase or ordering of any materials, fittings, plant, services or equipment and the preparation of shop drawings and or the fabrication of any components.

Do not scale drawings - refer to figured dimensions only. Any discrepancies shall immediately be referred to the architect for clarification.

All drawings may not be reproduced or distributed without prior permission from the architect.



Note: The ground level for the purposes of approximating the DDO26 envelope for the St Kilda Road properties has been taken from the existing natural ground level at Queens Lane. This can be considered to represent a conservative height envelope, noting the natural ground level actually elevates towards St Kilda Road which permits building height to increase correspondingly

Rev	Date	Description	Initial	Checked
B	07.03.23	VCAT Submission Issue	CL	DR
7	03.03.23	Draft - issued for coordination	CL	DR
6	24.02.23	Draft - issued for coordination	CL	DR
5	02.02.23	Draft - issued for coordination	CL	DR
4	16.08.22	Draft - issued for coordination		
3	10.08.22	Draft - issued for coordination		
A	01.06.22	Planning Permit Issue		
2	20.05.22	Draft - issued for coordination	ZJ	RB
1	03.05.22	Draft - issued for coordination		

50 QUEENS RD

Building Sections North - South Section 02

Status	FOR COORDINATION		
Scale	1 : 200	@	A1
Drawn	CL	Checked	DR
Project No.	M12568		
Plot Date	6/03/2023 5:45:40 PM		

Drawing no.	Revision
TP10.03	B

Melbourne 1 Nicholson Street
Melbourne VIC 3000 Australia
T 03 8664 6200 F 03 8664 6300
email mel@batesmart.com.au
http://www.batesmart.com.au

Sydney 43 Brisbane Street
Surry Hills NSW 2010 Australia
T 02 8354 5100 F 02 8354 5199
email syd@batesmart.com.au
http://www.batesmart.com.au

Bates Smart Pty Ltd ABN 70 004 999 400